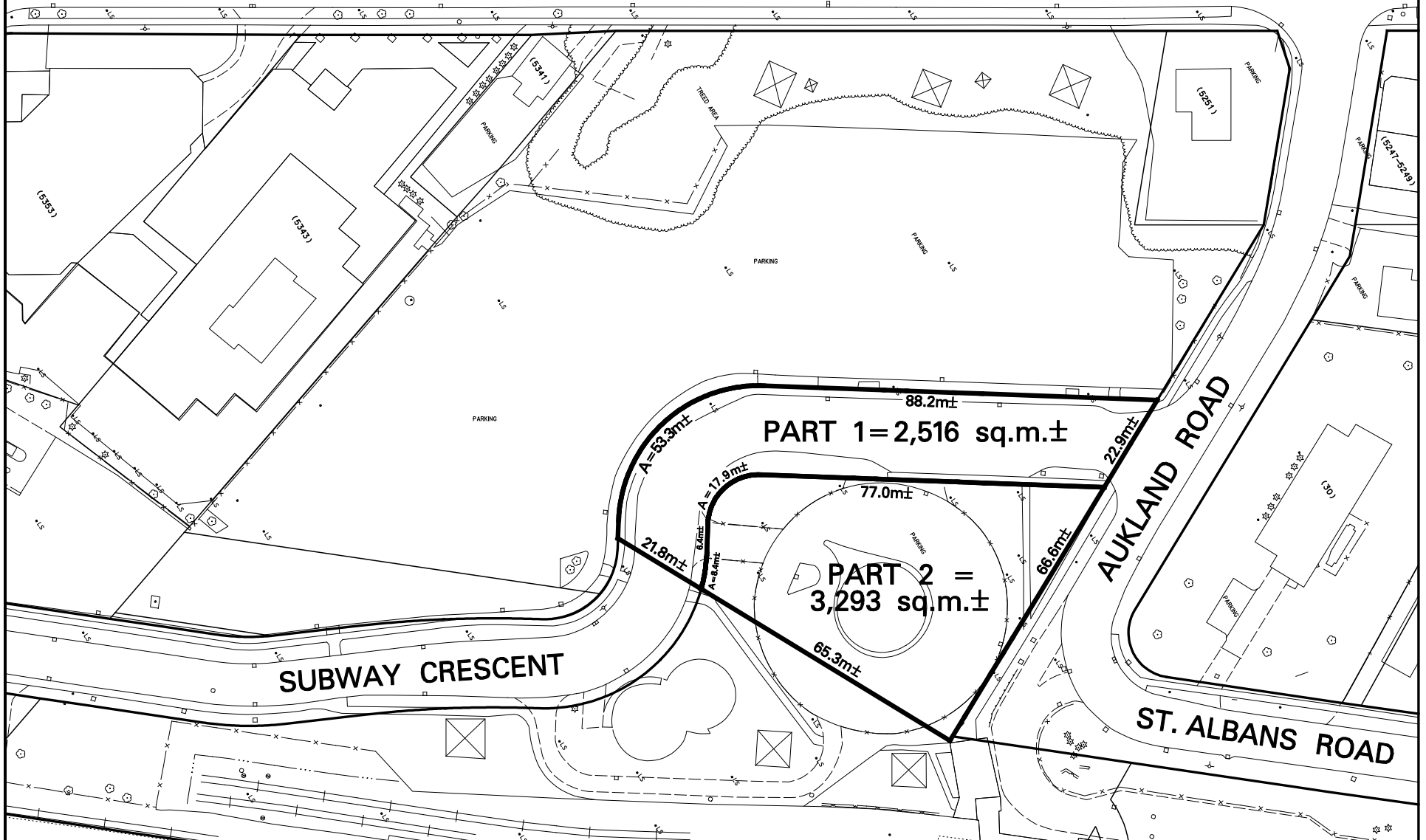
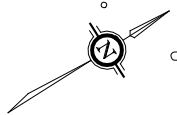


DUNDAS STREET WEST



PART 1 = 2,516 sq.m.±

PART 2 = 3,293 sq.m.±

SUBWAY CRESCENT

AUKLAND ROAD

ST. ALBANS ROAD

**TORONTO**

TECHNICAL SERVICES DIVISION  
SURVEY & MAPPING SERVICES

NOTE:

THIS SKETCH HAS BEEN COMPILED FROM OFFICE RECORDS.

NOT TO SCALE

PROPERTY INFORMATION SHEET  
CITY OWNED LAND  
PORTION OF SUBWAY CRESCENT (PART 1)  
AND KIPLING STATION LANDS (PART 2)

WARD 5 - ETOBICOKE-LAKESHORE  
DATE: NOV. 21, 2007

SKETCH No. PS-2007-281