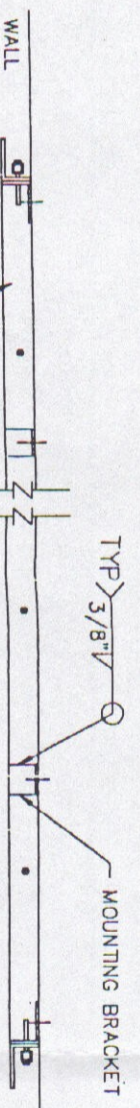
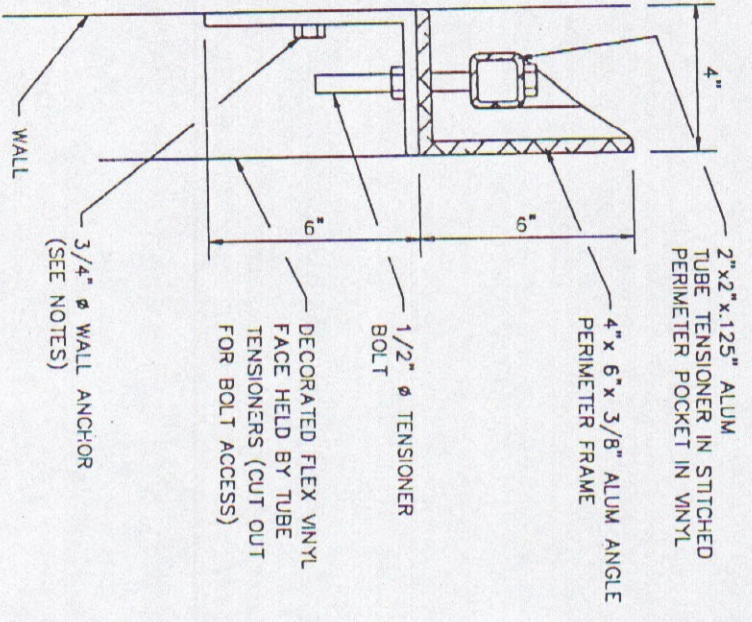


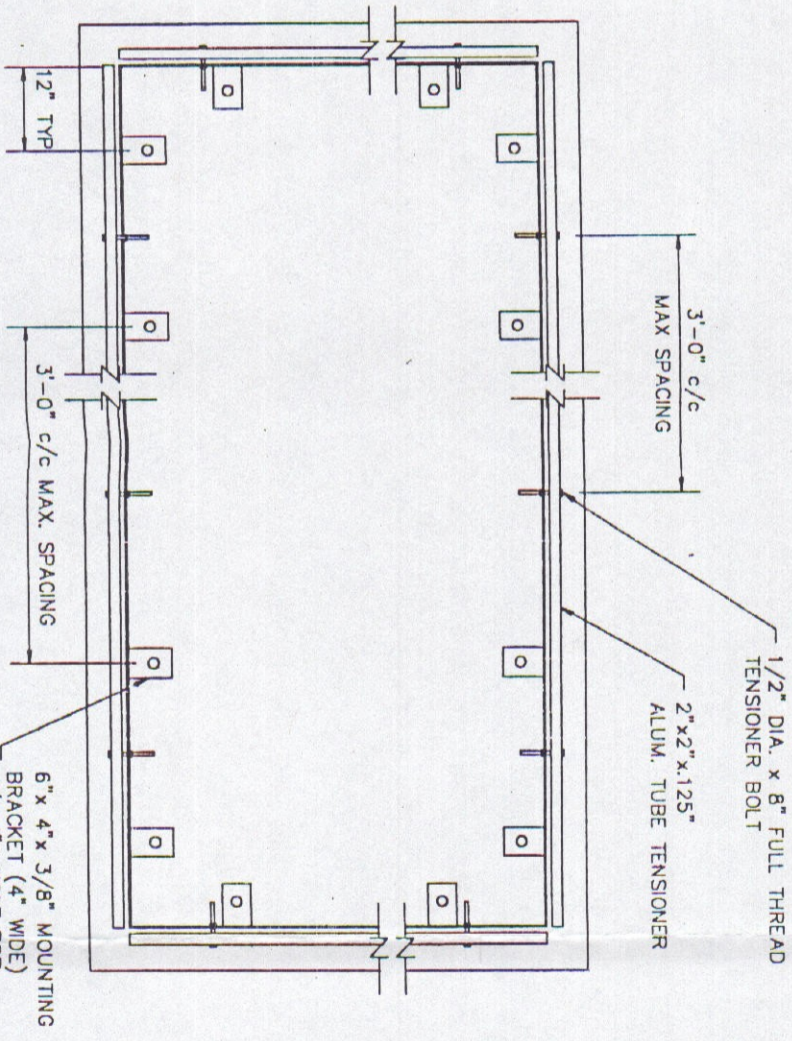
Attach ment - 56



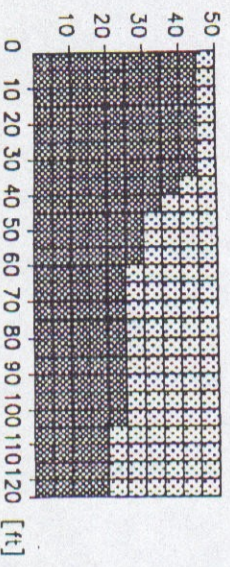
TYPICAL HORIZONTAL SECTION VIEW
(VINYL FACE OMITTED FOR CLARITY)



VERTICAL SECTION THROUGH PERIMETER FRAME



REAR ELEVATION VIEW
(VINYL FACE OMITTED FOR CLARITY)



FRAME SELECTION GUIDE

STANDARD FRAME SYSTEM HD (HEAVY DUTY) FRAME SYSTEM

NOTES:

- EXTRUDED ALUMINUM ALLOY IS 6061-T6
- TENSIONING BOLTS ARE MIN. SAE GRADE 2
- WELD NUTS ARE 6061-T6
- MOUNTING BOLTS ARE TO BE 3/4" ϕ AND ANCHORED USING THE HILTI HIT HY-150
- CHEMICAL ANCHORING SYSTEM OR EQUIVALENT
- THE DESIGN WIND (SUCTION) PRESSURE IS 18 PSI
- THE WALL SUBSTRATE AND THE ANCHORS USED MUST HAVE THE CAPACITY TO SAFELY CARRY A DESIGN LOADS
- IT IS RECOMMENDED THAT MOUNTING BOLTS BE INSPECTED AND ADJUSTED AS REQUIRED EACH TIME THE VINYL FACE IS CHANGED, OR AT LEAST ONCE PER YEAR
- FRAME INSTALLATION MUST MEET ALL LOCAL CODES AND BYLAWS

BRIAN DUDLEY LTD.

15 BARR RD., AJAX, ONTARIO L1S 3Y1
 TELEPHONE: (905) 686-3636 • FAX: (905) 686-2156
 BRIAN DUDLEY
 • SIGN ERECTION / REMOVAL • CUSTOM FABRICATION • METAL WOOD
 • SIGN CRANES NEW / USED • CRANE RENTAL UP TO 100'

TITLE
 INVISIFRAME TENSIONING SYSTEM
 HD (HEAVY DUTY) WALL MOUNT

DATE
 Jan. 27, 1997

SCALE
 NTS

DRAWN BY
 HESI

REVISION

DRAWING NO.
 H96B404

