

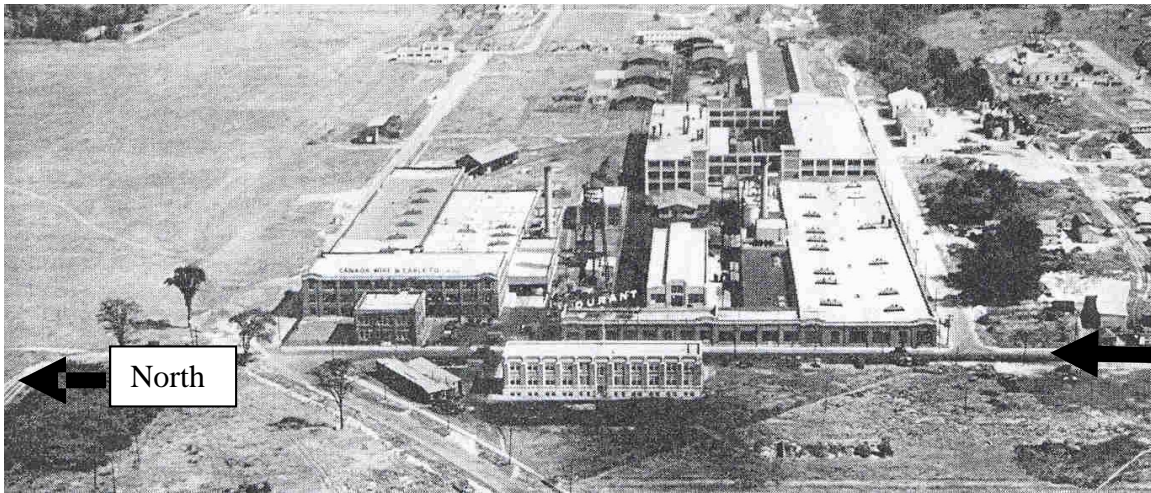


View looking north along the west side of Laird Drive, showing the former Durant Motors Office Building in the centre of the photograph.



View of the principal (east) façade of the former Durant Motors Office Building.





The long arrow (right) indicates Laird Drive, with 150 Laird shown on the west side near the intersection of McRae Drive. The former factory complexes developed by Durant Motors of Canada and the Canada Wire and Cable Company (both with rooftop signage) are shown on the east side of Laird Drive (*photograph: Leaside*).



The long arrow (left) shows the location of the building at 150 Laird Drive, which faces east toward Laird Drive with the factory complexes developed by Durant Motors of Canada and the Canada Wire and Cable Company on the east (right) side of the street. The former Canadian Northern Railway yard is shown at the bottom of the photograph, where the building now identified as 85 Laird Drive is included on the City of Toronto Inventory of Heritage Properties (*photograph: City of Toronto Archives*).