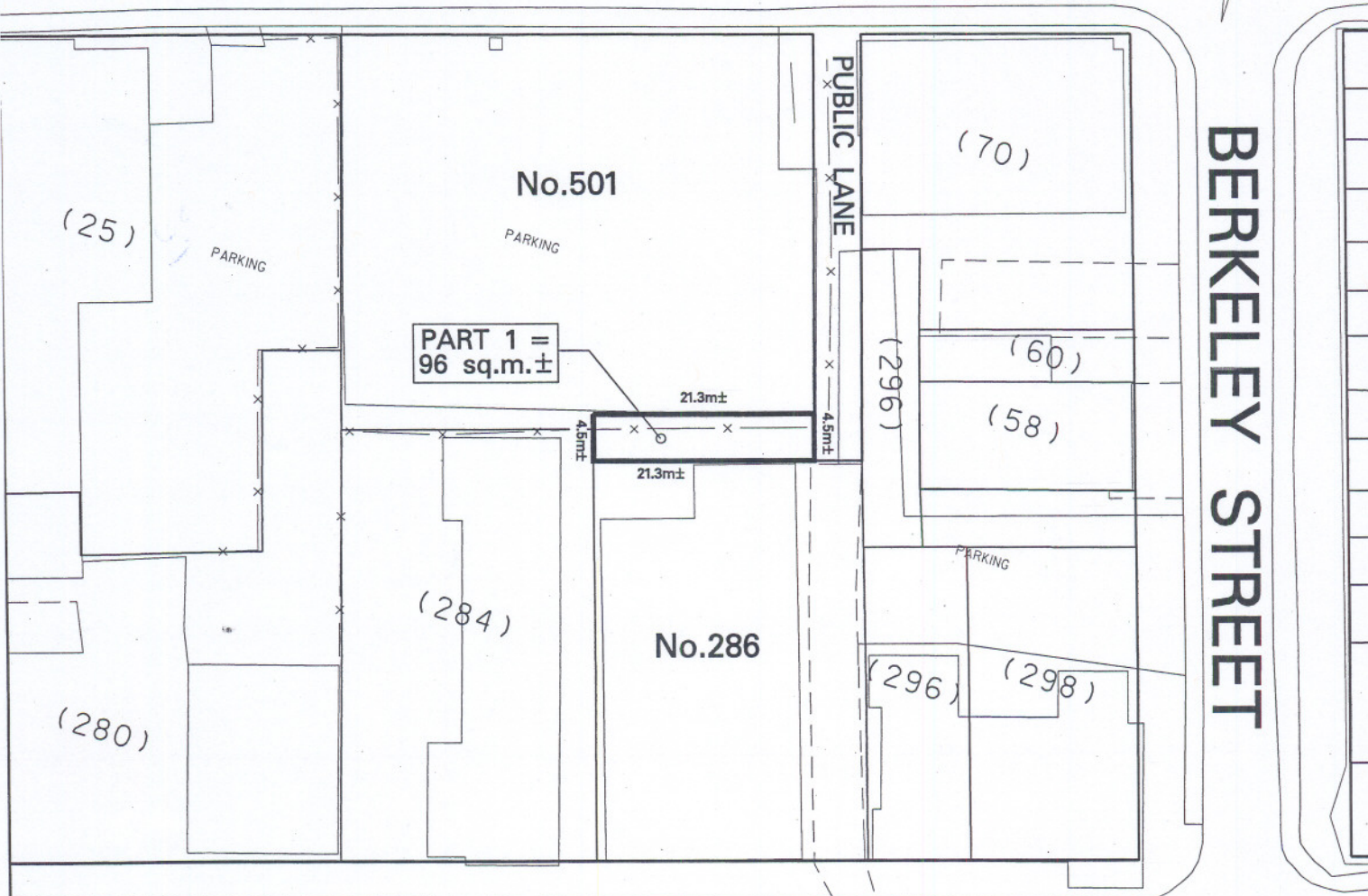


ADELAIDE STREET EAST



BERKELEY STREET

KING STREET EAST

PROPERTY INFORMATION SHEET

CITY OWNED LAND
 PROPOSED CLOSURE OF A PORTION
 OF THE PUBLIC LANE ABUTTING
 No. 286 KING STREET EAST AND
 No. 501 ADELAIDE STREET EAST



TECHNICAL SERVICES DIVISION
 SURVEY & MAPPING SERVICES

NOTE:

THIS SKETCH HAS
 BEEN COMPILED FROM
 OFFICE RECORDS.

NOT TO SCALE

WARD 28 - TORONTO CENTRE-ROSEDALE
 DATE: DEC. 14, 2005

SKETCH No. PS-2005-145