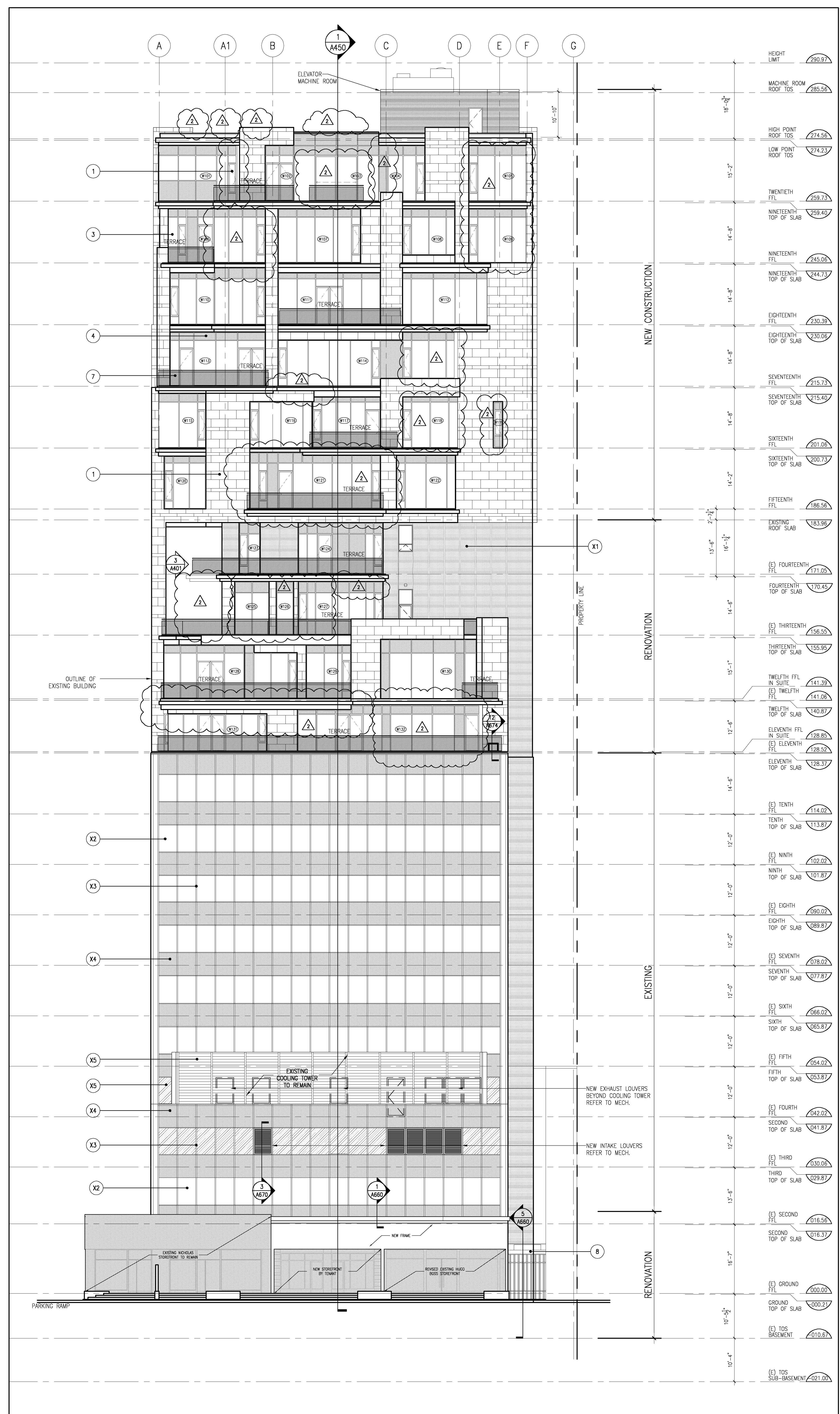


1 SOUTH ELEVATION  
A400 SCALE: 3/32"=1'-0"



2 NORTH ELEVATION  
A400 SCALE: 3/32"=1'-0"

LEGEND - EXISTING MATERIALS

- (X1) EXISTING FACE BRICK TO REMAIN
- (X2) EXISTING VISION GLASS TO REMAIN
- (X3) EXISTING SPANDREL PANEL TO REMAIN
- (X4) EXISTING CURTAIN WALL TO REMAIN
- (X5) EXISTING LOUVERS TO REMAIN

LEGEND - PROPOSED MATERIALS

- (1) LIME STONE CLADDING
- (2) BRICK VENER
- (3) PREFIN ALUM WINDOW SYSTEM - VISION GLASS
- (4) PREFIN ALUM WINDOW SYSTEM - SPANDREL PANEL
- (5) PREFIN METAL PANEL
- (6) PREFIN ALUM ARCHITECTURAL LOUVER
- (7) PREFIN SS RAILING WITH TEMPERED GLASS
- (8) PREFIN SS CANDLEY
- (9) DECORATIVE PRECAST PER CAP
- (10) LOUVERS 1
- (11) LOUVERS 2
- (12) LOUVERS 3

2007-02-01 (A) REVISED PER SI-7, CCN 2 & 3

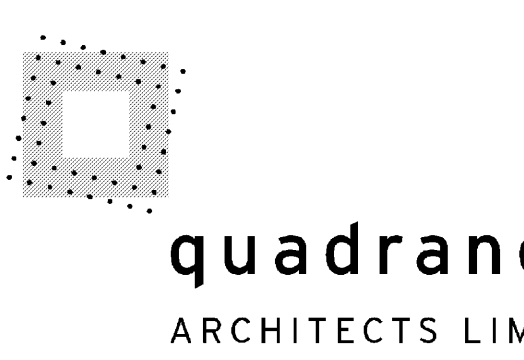
2006-12-13 (A) REVISED PER SI-3

REVISION RECORD

DATE	DESCRIPTION
2007-02-01	ISSUED FOR CONSTRUCTION
2006-11-16	RE-ISSUED FOR TENDER
2006-11-15	ISSUED FOR TENDER
2006-11-02	ISSUED FOR CO-ORDINATION
2006-10-24	ISSUED FOR FINAL CODE REPORT
2006-09-15	ISSUED FOR PRE-TENDER COSTING
2006-09-11	ISSUED FOR CO-ORDINATION
2006-07-21	ISSUED FOR REVIEW
2006-06-02	ISSUED FOR CITY REVIEW
2006-03-08	REVISED BUDGET
2005-12-13	RE-ISSUED FOR C OF A
2005-09-22	ISSUED FOR C.O.A
2005-09-09	REVISED P.P.R.

ISSUE RECORD

DATE	DESCRIPTION
2007-02-01	ISSUED FOR CONSTRUCTION
2006-11-16	RE-ISSUED FOR TENDER
2006-11-15	ISSUED FOR TENDER
2006-11-02	ISSUED FOR CO-ORDINATION
2006-10-24	ISSUED FOR FINAL CODE REPORT
2006-09-15	ISSUED FOR PRE-TENDER COSTING
2006-09-11	ISSUED FOR CO-ORDINATION
2006-07-21	ISSUED FOR REVIEW
2006-06-02	ISSUED FOR CITY REVIEW
2006-03-08	REVISED BUDGET
2005-12-13	RE-ISSUED FOR C OF A
2005-09-22	ISSUED FOR C.O.A
2005-09-09	REVISED P.P.R.



380 Wellington Street West Toronto, Ontario M5V 1E3 1-416-598-1340 1-416-598-3123

130 Bloor Street West  
Toronto, Ontario  
for  
130 Bloor KS Inc.

05028 3/32"=1'-0" TWW/J LC  
PROJECT SCALE DRAWN/REVIEWED

SOUTH & NORTH ELEVATIONS

A400

Note: This drawing is the property of the Architect and may not be reproduced or used without the expressed consent of the Architect. The Contractor is responsible for checking and verifying all levels and dimensions and shall report all discrepancies to the Architect and obtain clarification prior to commencing work.