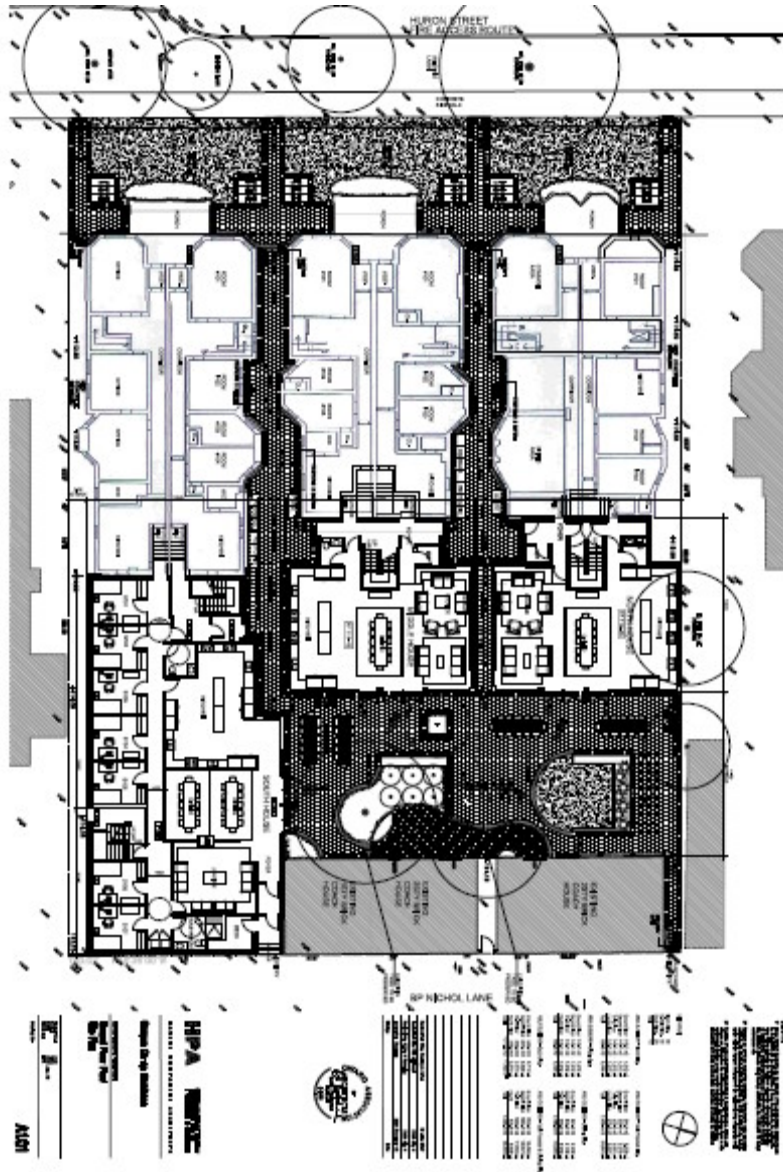
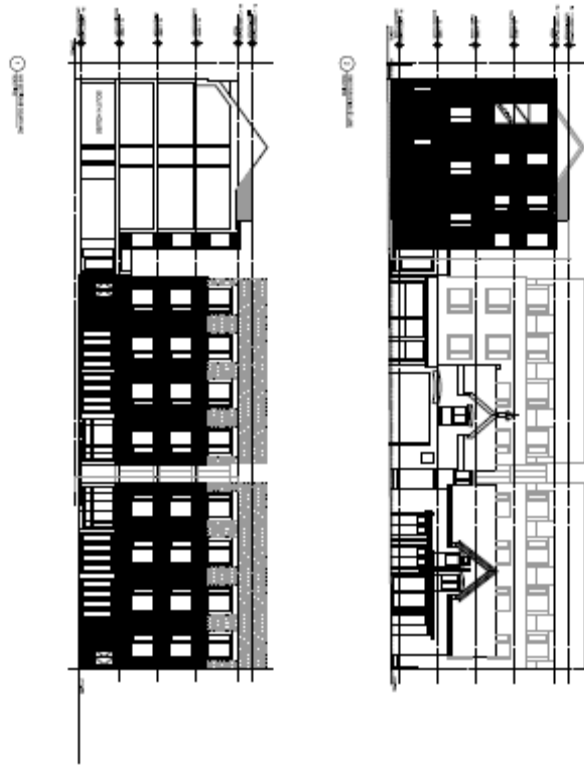


PERMITTED ALTERATIONS: 395-405 HURON STREET ATTACHMENT NO. 4

Drawing No.:	Description:	Prepared By:	Date:
A1.01	Ground Floor / Site Plan	Hariri Pontarini Architects	June 13, 2007
A3.01	Sections and Elevations	Hariri Pontarini Architects	June 13, 2007
A3.02	Sections and Elevations	Hariri Pontarini Architects	June 13, 2007
A3.03	Sections and Elevations	Hariri Pontarini Architects	June 13, 2007
A3.04	Sections and Elevations	Hariri Pontarini Architects	June 13, 2007
A3.05	Sections and Elevations	Hariri Pontarini Architects	June 13, 2007
A3.06	Sections and Elevations	Hariri Pontarini Architects	June 13, 2007



Proposed Ground / Site Plan  
as shown on the plans by Hariri Pontarini Architects dated June 13, 2007



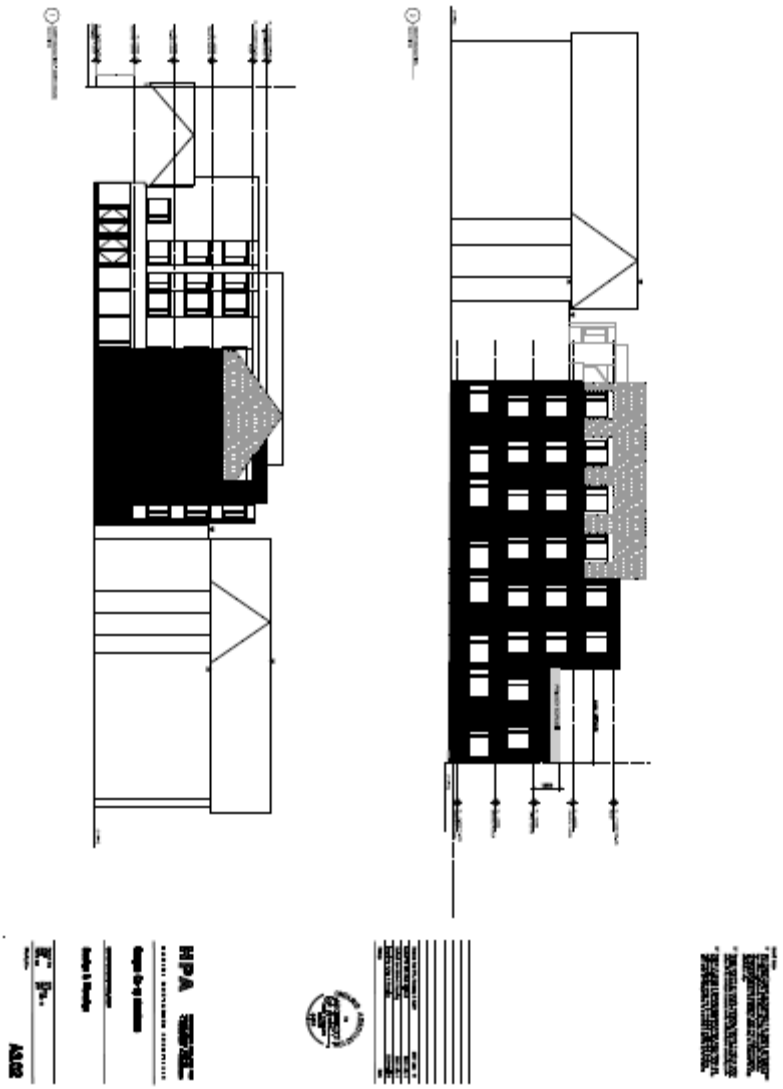
**HPA**  
HARIRI PONTARINI ARCHITECTS  
395-405 HURON STREET  
ANN ARBOR, MI 48106  
TEL: 734.769.1100  
WWW.HPAA.COM



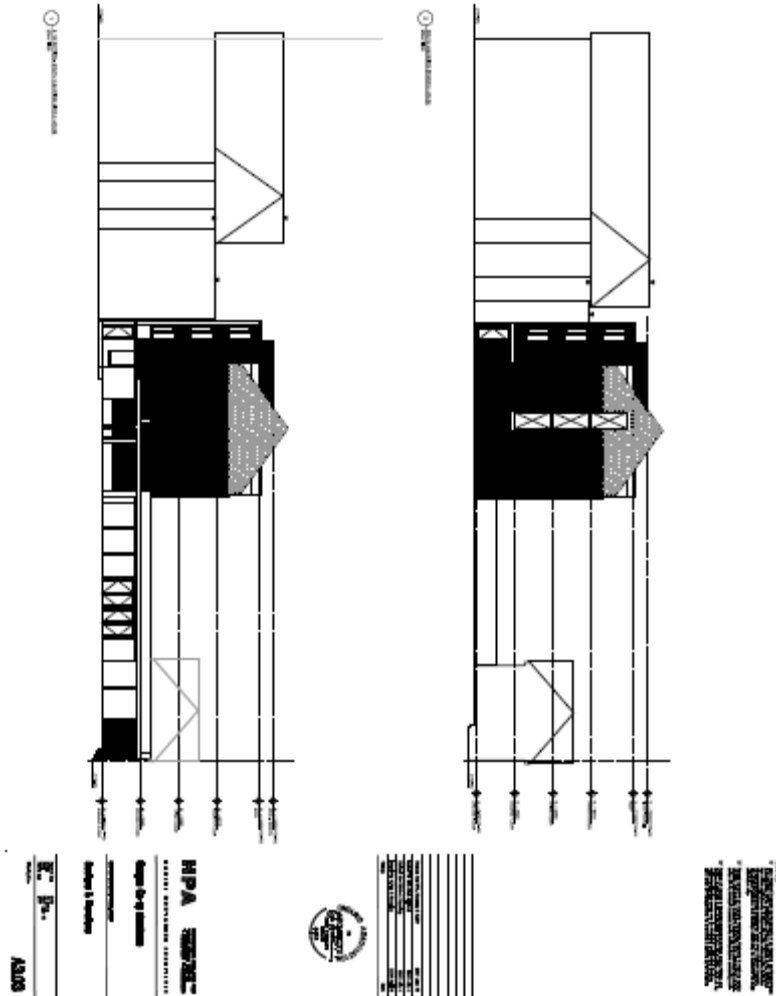
DATE: 06/13/07  
PROJECT: 395-405 HURON STREET  
DRAWN BY: [Name]  
CHECKED BY: [Name]  
SCALE: AS SHOWN

NOT TO SCALE  
FOR INFORMATION ONLY  
DO NOT CONSIDER THIS DRAWING  
FOR CONSTRUCTION WITHOUT  
THE APPROPRIATE PERMITS  
AND APPROVALS

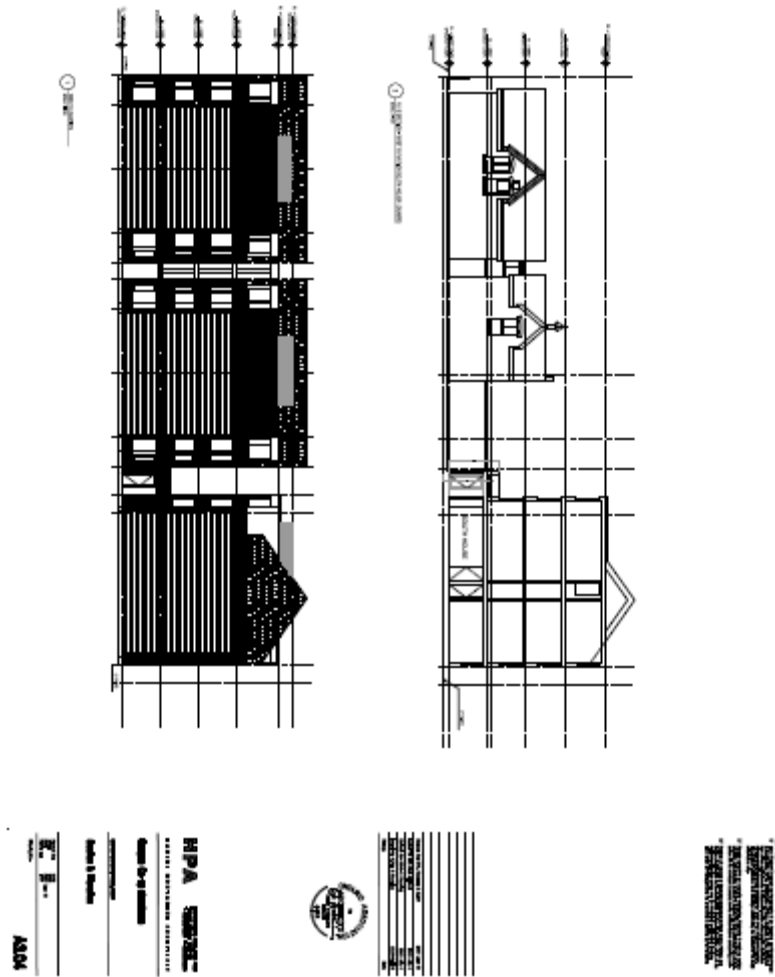
Proposed East Elevations  
as shown on the plans by Hariri Pontarini Architects dated June 13, 2007



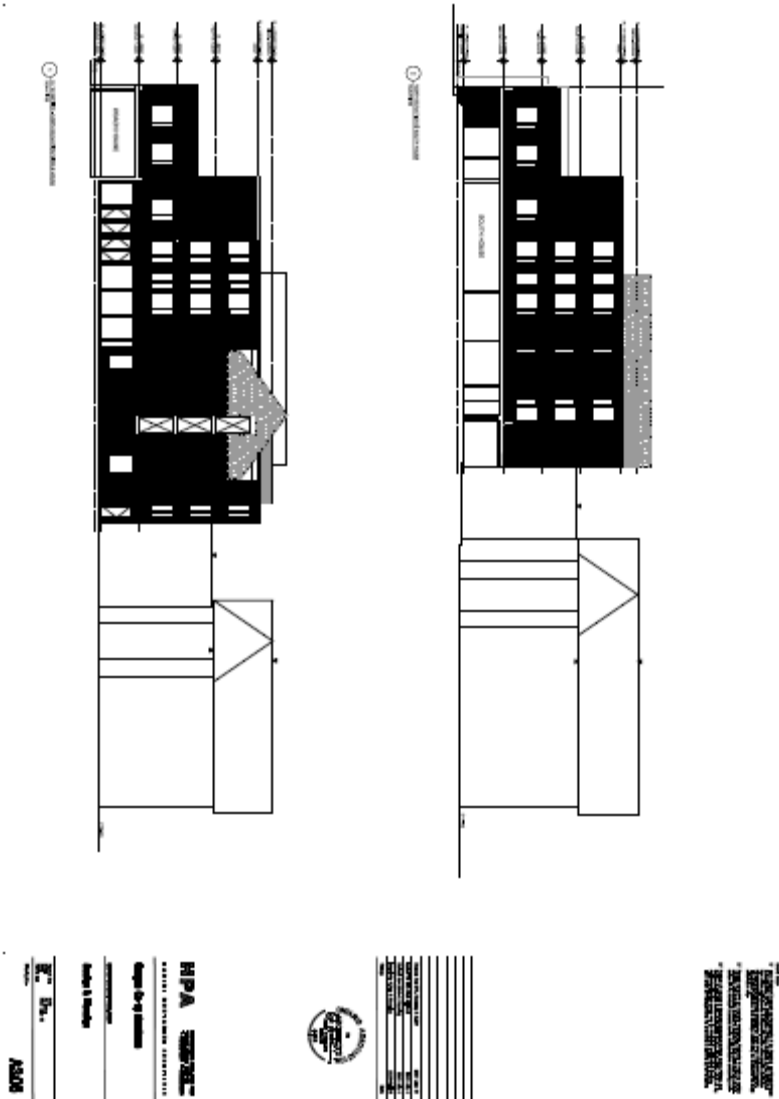
Proposed South and North Elevations  
as shown on the plans by Hariri Pontarini Architects dated June 13, 2007



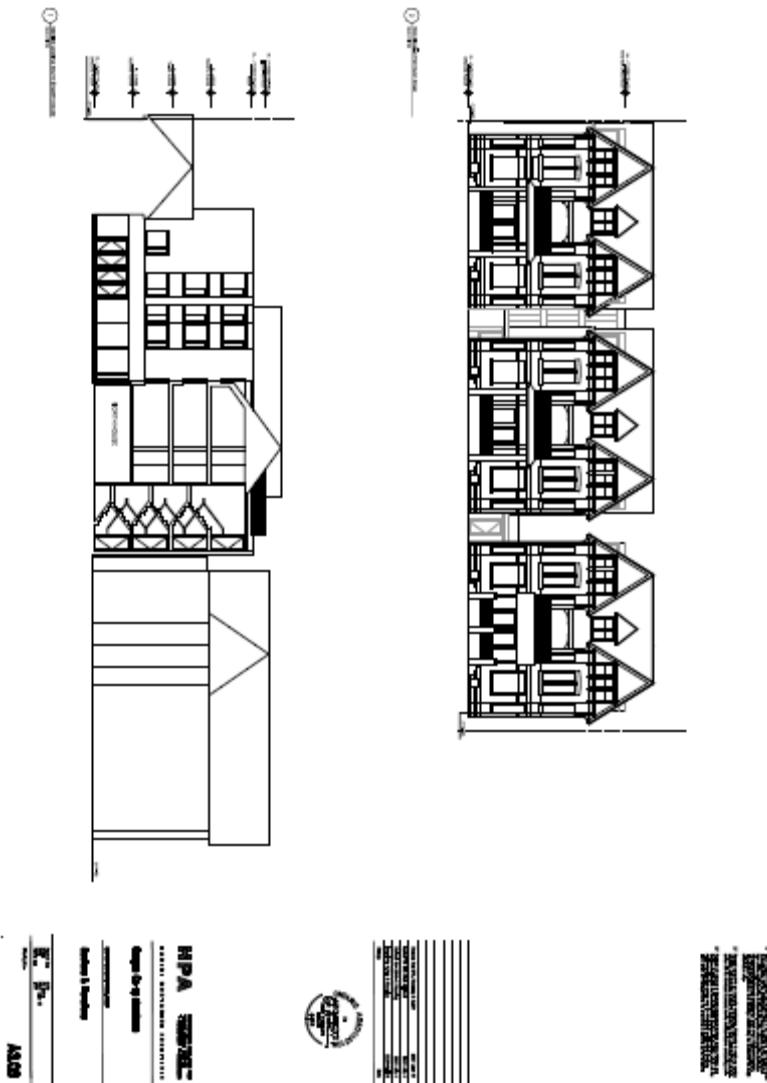
Proposed South Elevation at North Addition and East/West Section, South Elevation of Middle Addition as shown on the plans by Hariri Pontarini Architects dated June 13, 2007



Proposed North/South Section through South Addition  
West Elevation and Connection to Heritage Buildings  
as shown on the plans by Hariri Pontarini Architects dated June 13, 2007



Proposed North Elevation at South Addition  
East/West Section – North Elevation of Middle Addition  
as shown on the plans by Hariri Pontarini Architects dated June 13, 2007



Proposed West Elevation and  
Section Looking South at North Addition  
as shown on the plans by Hariri Pontarini Architects dated June 13, 2007