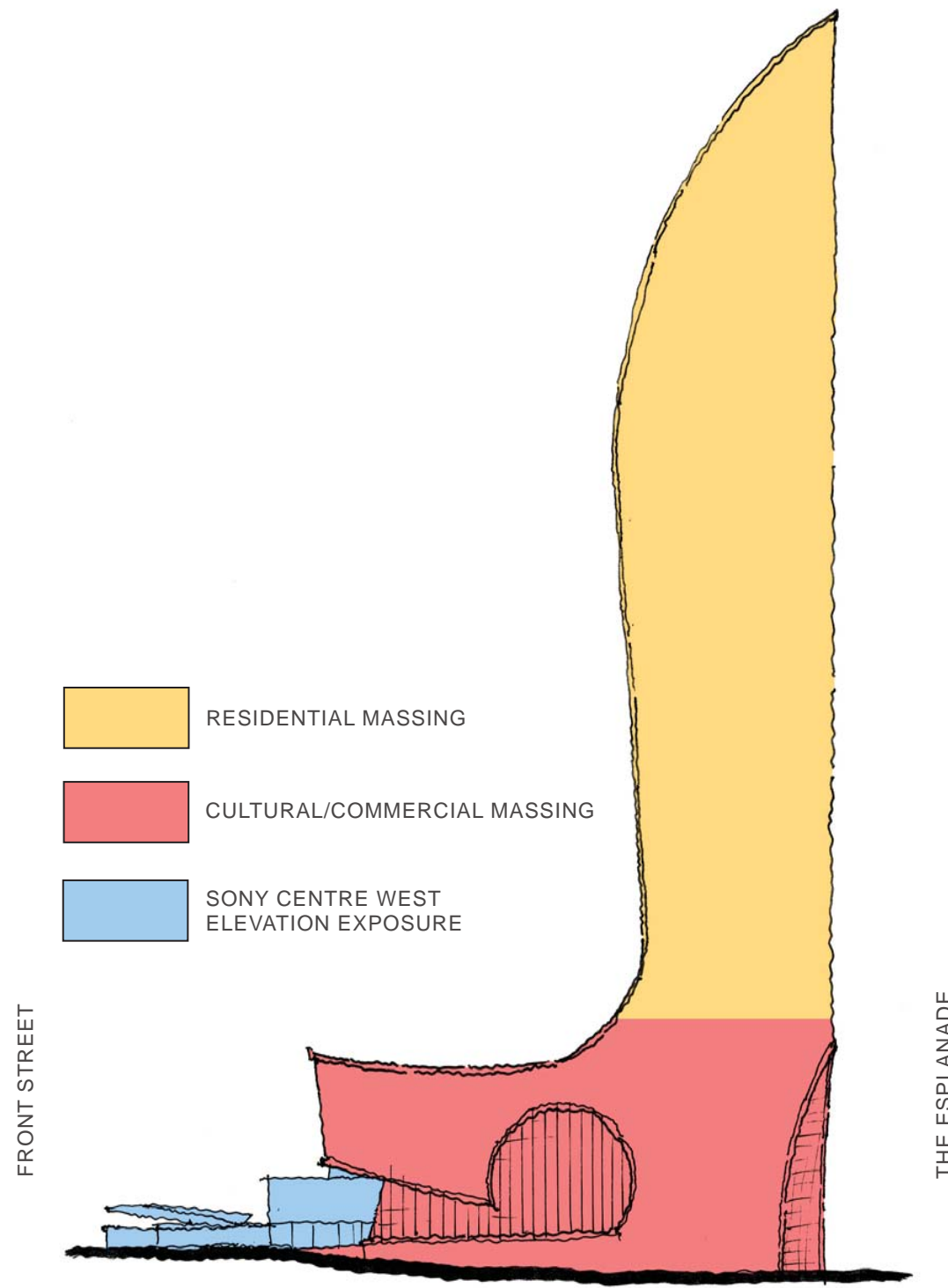
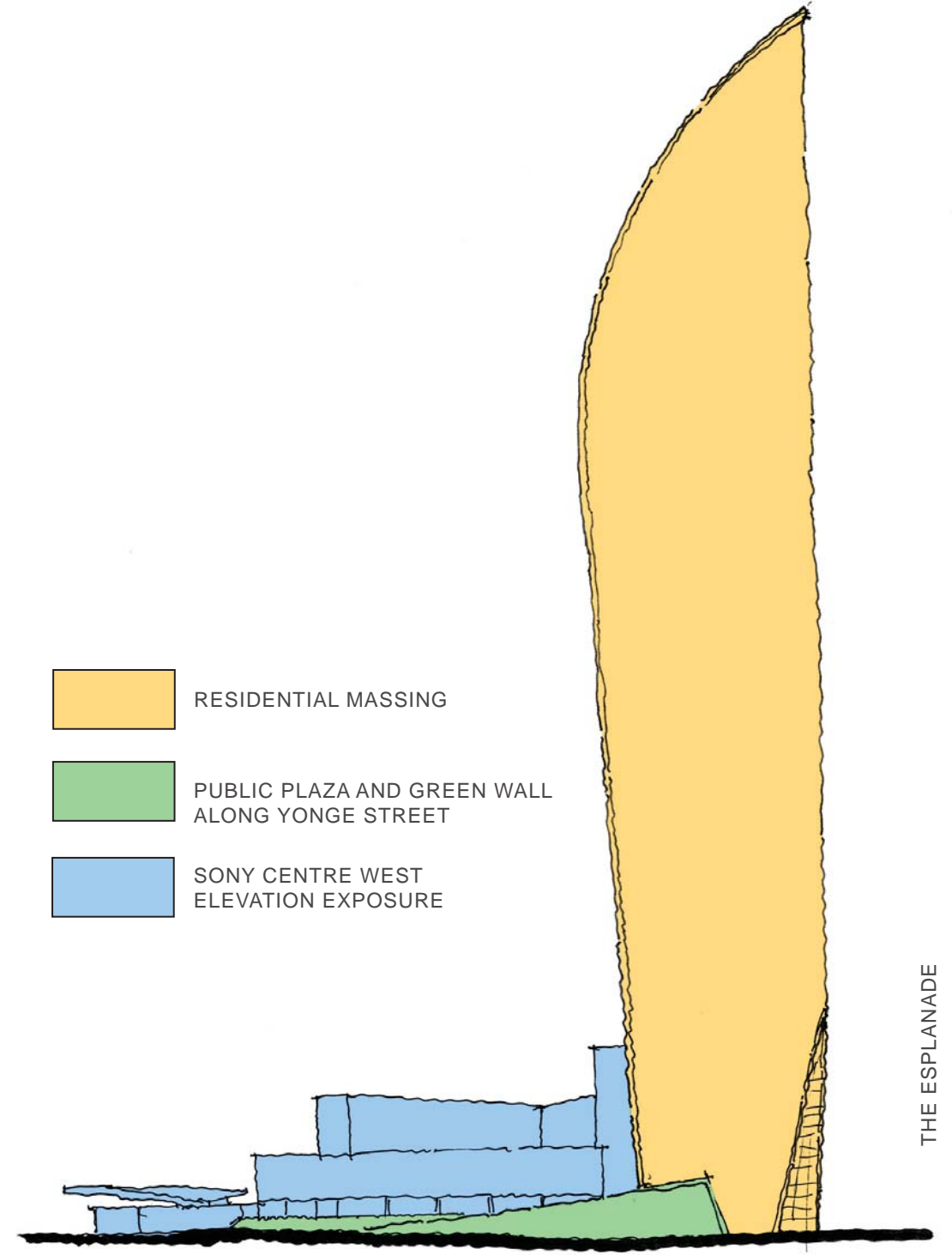


- INCREASED PUBLIC OPEN SPACE WITH LARGE PLAZA
- INCREASED EXPOSURE OF SONY CENTRE HERITAGE FACADE
- IMPROVED STREET ANIMATION WITH LANDSCAPE ELEMENTS ALONG YONGE ST.



- RESIDENTIAL MASSING
- CULTURAL/COMMERCIAL MASSING
- SONY CENTRE WEST ELEVATION EXPOSURE

ORIGINAL ARTSLAB PODIUM SCHEME



- RESIDENTIAL MASSING
- PUBLIC PLAZA AND GREEN WALL ALONG YONGE STREET
- SONY CENTRE WEST ELEVATION EXPOSURE

REVISED SCHEME WITH PUBLIC PLAZA

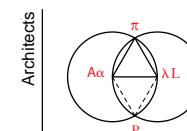
YONGE STREET ELEVATION

THE L TOWER @ THE SONY CENTRE

1 Front Street East  
Toronto, Ontario M5E 1B2

L TOWER - PLAZA STUDY  
SEPT 18, 2008

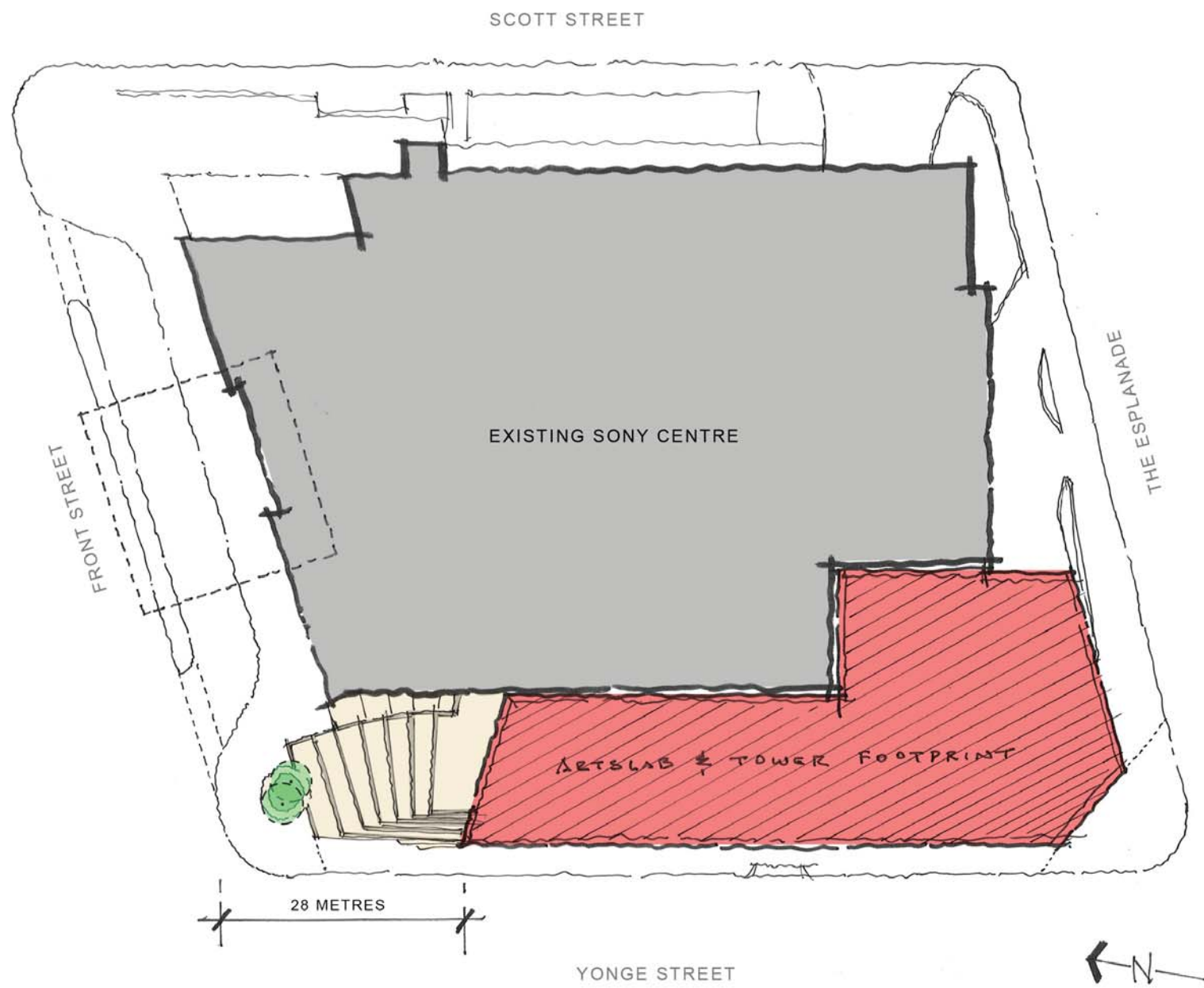
Developer  
**CASTLEPOINT**  
8500 LESLIE STREET  
THORNHILL, ONTARIO L3T 7M8  
CANADA



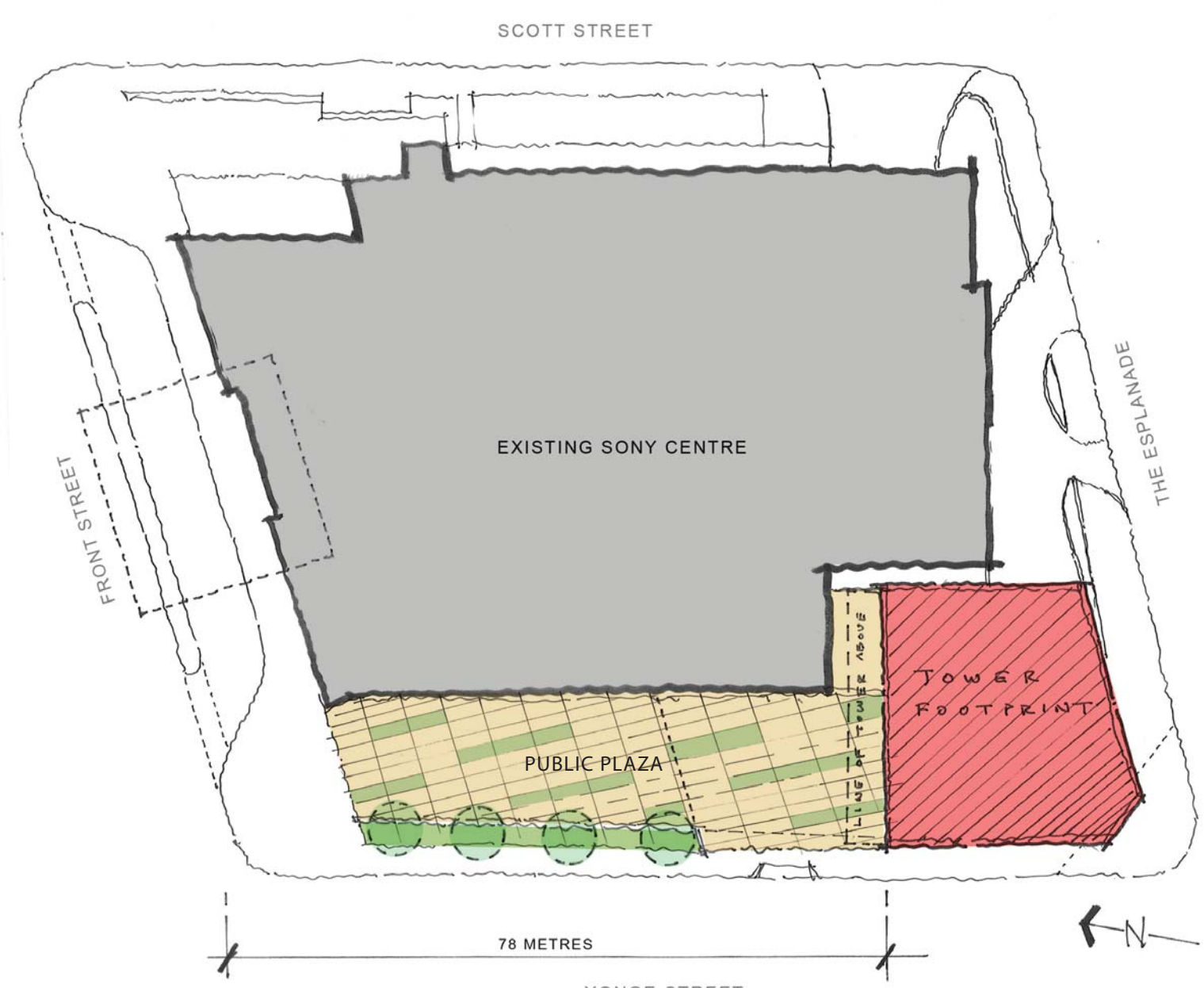
Architects  
**STUDIO DANIEL LIBESKIND, LLC**  
2 RECTOR STREET, 19TH FLOOR  
NEW YORK, NEW YORK 10006  
TEL. 212 497 9100 FAX. 212 285 2130  
E-MAIL. INFO@daniel-libeskind.com

**PAGE + STEELE**  
ARCHITECTS PLANNERS  
95 ST CLAIR AVE. W. SUITE 200  
TORONTO CANADA, M4V 1N6  
TEL. 416.924.9899 FAX. 416.924.9067  
E-MAIL. info@pagestele.com

- INCREASED PUBLIC OPEN SPACE WITH LARGE PLAZA
- REDUCED BUILDING FOOTPRINT
- INCREASED EXPOSURE OF SONY CENTRE HERITAGE FACADE
- IMPROVED STREET ANIMATION WITH LANDSCAPE ELEMENTS ALONG YONGE ST.



ORIGINAL ARTSLAB PODIUM SCHEME



REVISED SCHEME WITH PUBLIC PLAZA

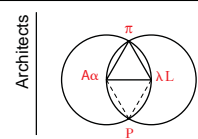
SITE PLAN

THE L TOWER @ THE SONY CENTRE

1 Front Street East  
Toronto, Ontario M5E 1B2

L TOWER - PLAZA STUDY  
SEPT 18, 2008

Developer  
**CASTLEPOINT**  
8500 LESLIE STREET  
THORNHILL, ONTARIO L3T 7M8  
CANADA

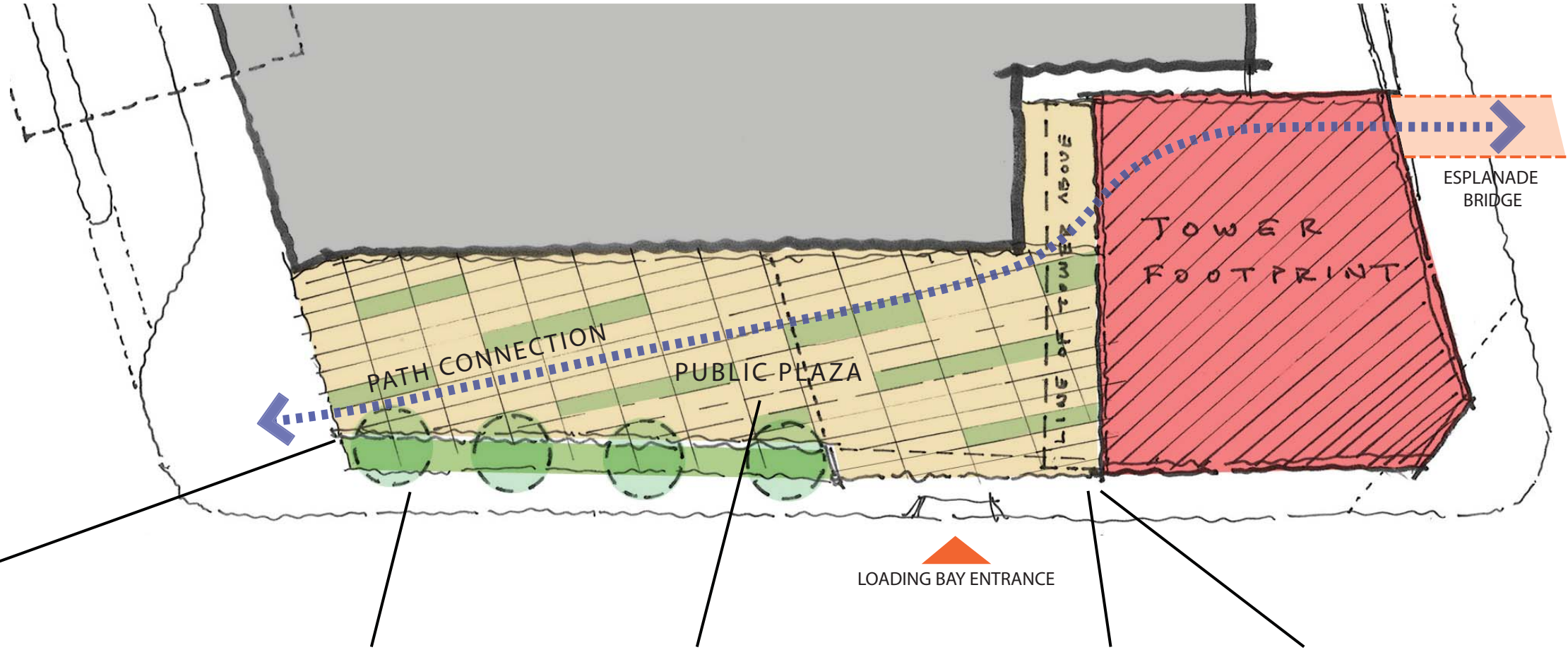


Architects  
**STUDIO DANIEL LIBESKIND, LLC**  
2 RECTOR STREET, 19TH FLOOR  
NEW YORK, NEW YORK 10006  
TEL. 212 497 9100 FAX. 212 285 2130  
E-MAIL. INFO@DANIEL-LIBESKIND.COM

**PAGE + STEELE**  
ARCHITECTS PLANNERS  
95 ST CLAIR AVE. W. SUITE 200  
TORONTO CANADA, M4V 1N6  
TEL. 416.524.9899 FAX. 416.524.9067  
E-MAIL. info@pagestele.com



NATURAL STONE WALL WITH VEGETATION



TREES



PAVING AND PLANTS



GREEN LIVING WALL



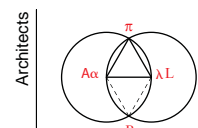
LANDSCAPE CONCEPTS

THE L TOWER @ THE SONY CENTRE

1 Front Street East  
Toronto, Ontario M5E 1B2

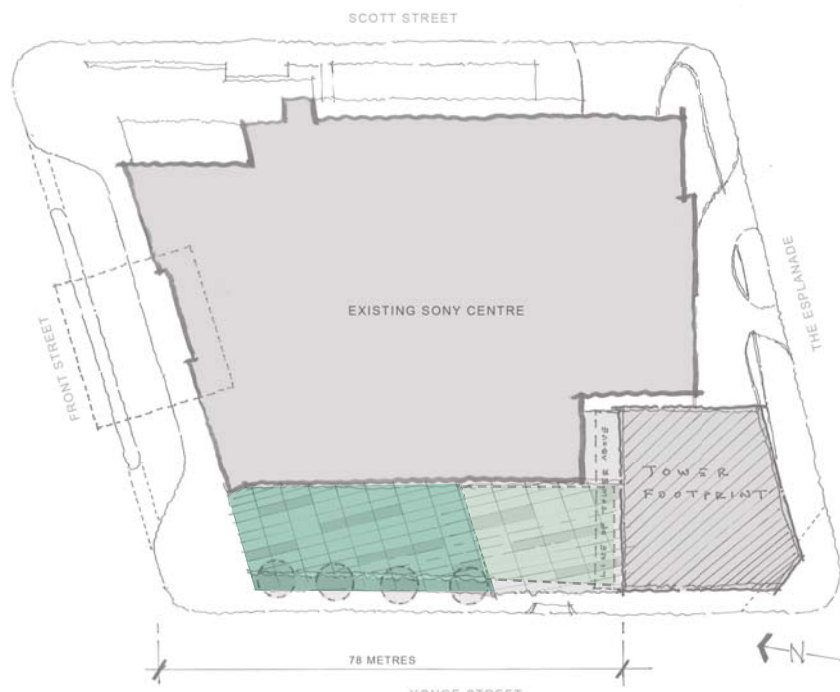
L TOWER - PLAZA STUDY  
SEPT 18, 2008

Developer  
**CASTLEPOINT**  
REALTY PARTNERS  
8500 LESLIE STREET  
THORNHILL, ONTARIO L3T 7M8  
CANADA

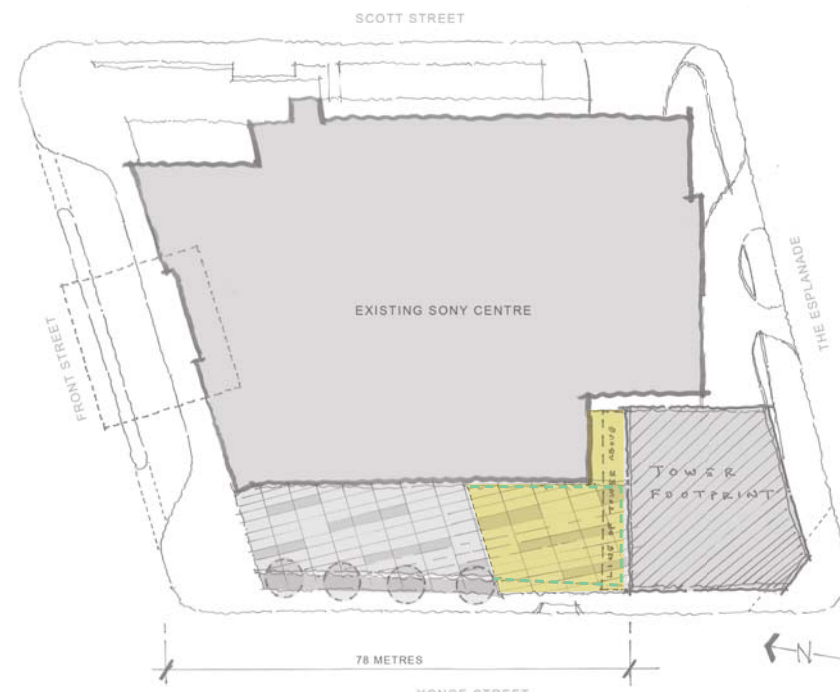


Architects  
**STUDIO DANIEL LIBESKIND, LLC**  
2 RECTOR STREET, 19TH FLOOR  
NEW YORK, NEW YORK 10006  
TEL. 212 497 9100 FAX. 212 285 2130  
E-MAIL. INFO@daniel-libeskind.com

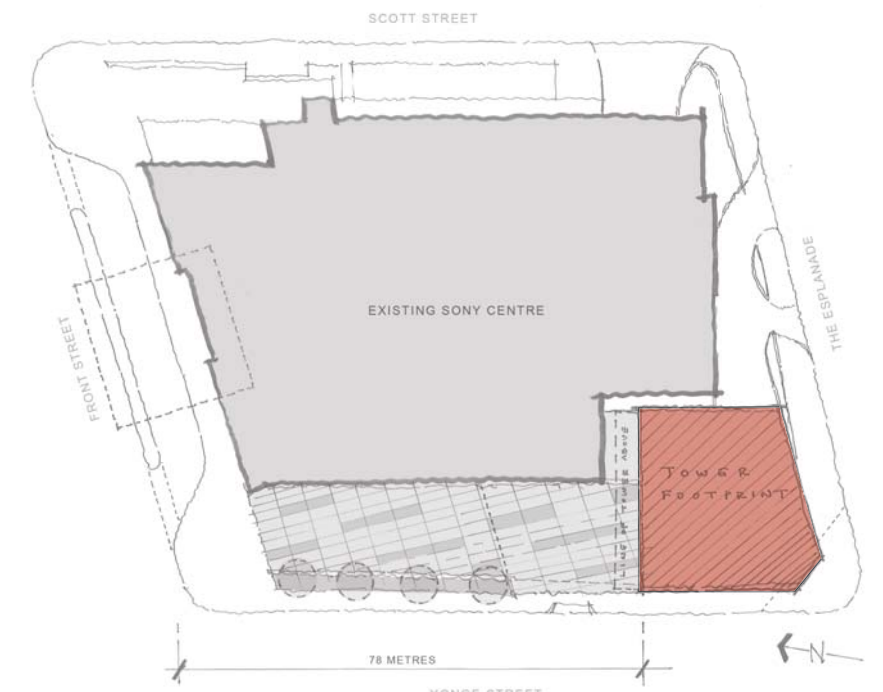
**PAGE + STEELE**  
ARCHITECTS PLANNERS  
95 ST CLAIR AVE. W. SUITE 200  
TORONTO CANADA M4V 1N6  
TEL. 416.924.9966 FAX. 416.924.9067  
E-MAIL. info@pagesteele.com



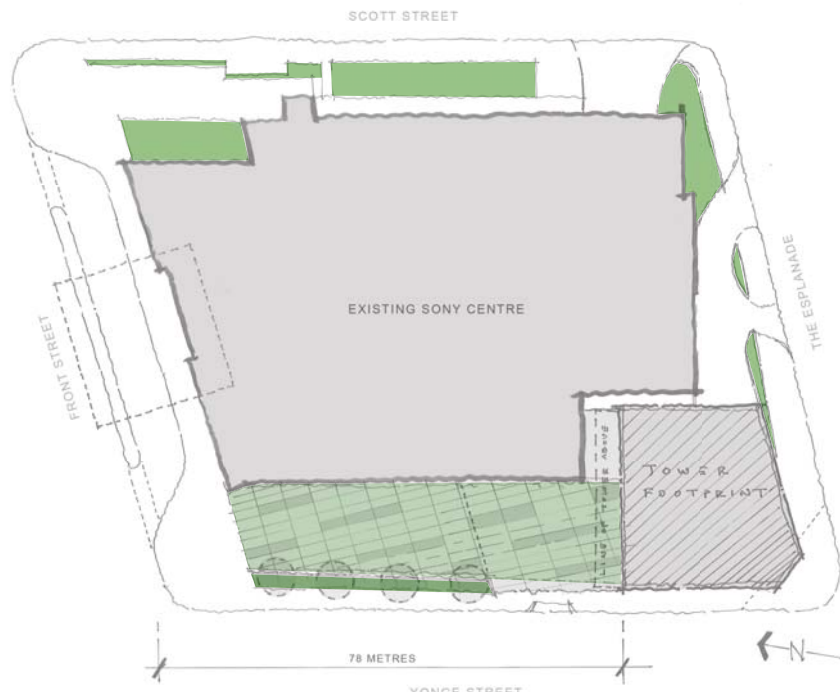
PUBLIC OPEN SPACE



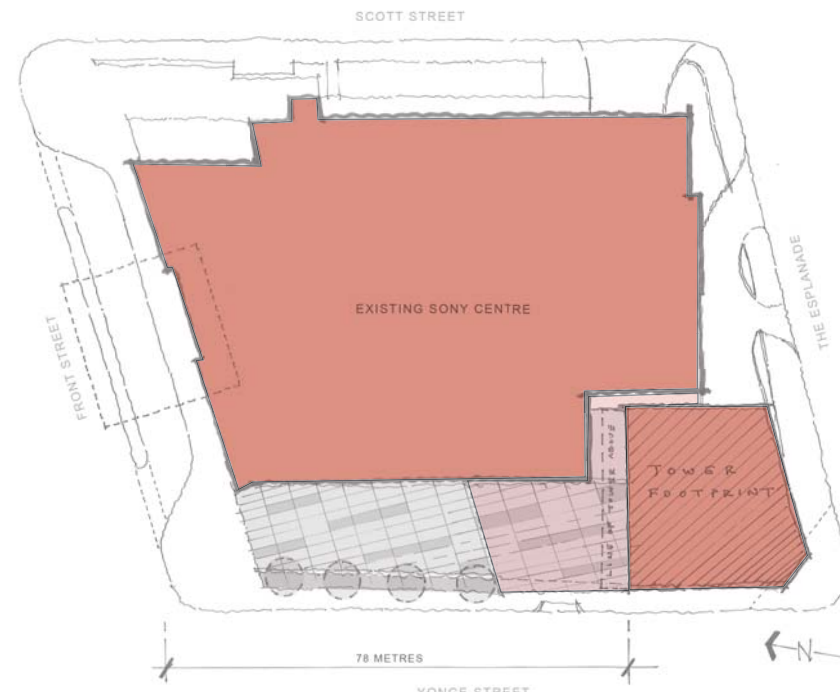
LOADING BAY AND THEATRE EGRESS VOLUME



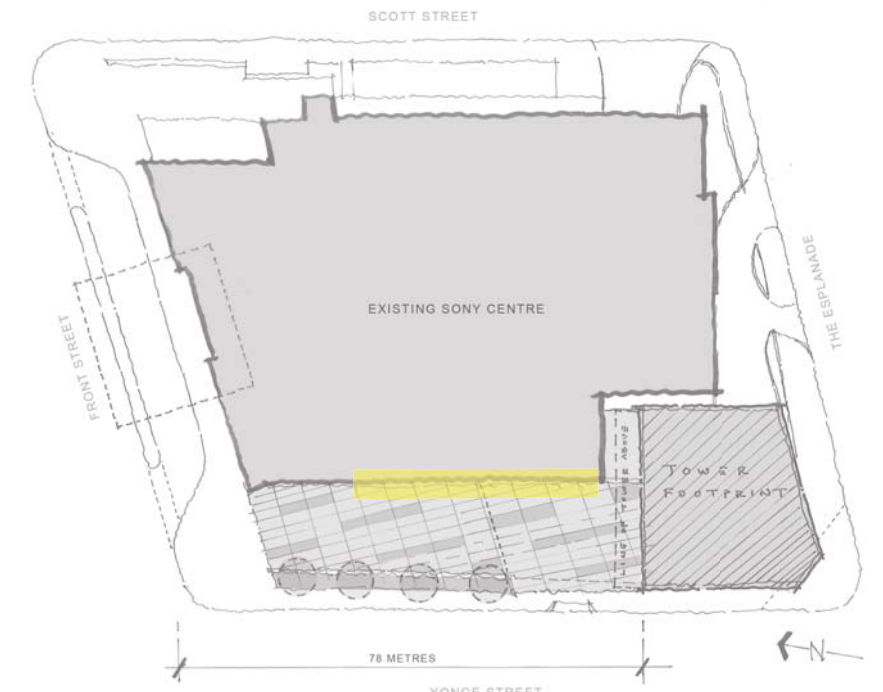
TOWER FOOTPRINT



LANDCAPE SPACE



BUILT MASS



INCREASED HERITAGE EXPOSURE

SITE DIAGRAMS

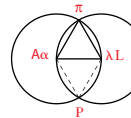
THE L TOWER @ THE SONY CENTRE

1 Front Street East  
Toronto, Ontario M5E 1B2

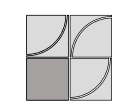
L TOWER - PLAZA STUDY  
SEPT 18, 2008

Developer  
**CASTLEPOINT**  
8500 LESLIE STREET  
THORNHILL, ONTARIO L3T 7M8  
CANADA

Architects



STUDIO DANIEL LIBESKIND, LLC  
2 RECTOR STREET, 19TH FLOOR  
NEW YORK, NEW YORK 10006  
TEL. 212 497 9100 FAX. 212 285 2130  
E-MAIL. INFO@daniel-libeskind.com



**PAGE + STEELE**  
ARCHITECTS + PLANNERS  
95 ST CLAIR AVE. W. SUITE 200  
TORONTO CANADA, M4V 1N6  
TEL. 416.524.9266 FAX. 416.524.9267  
E-MAIL. info@pagesteale.com