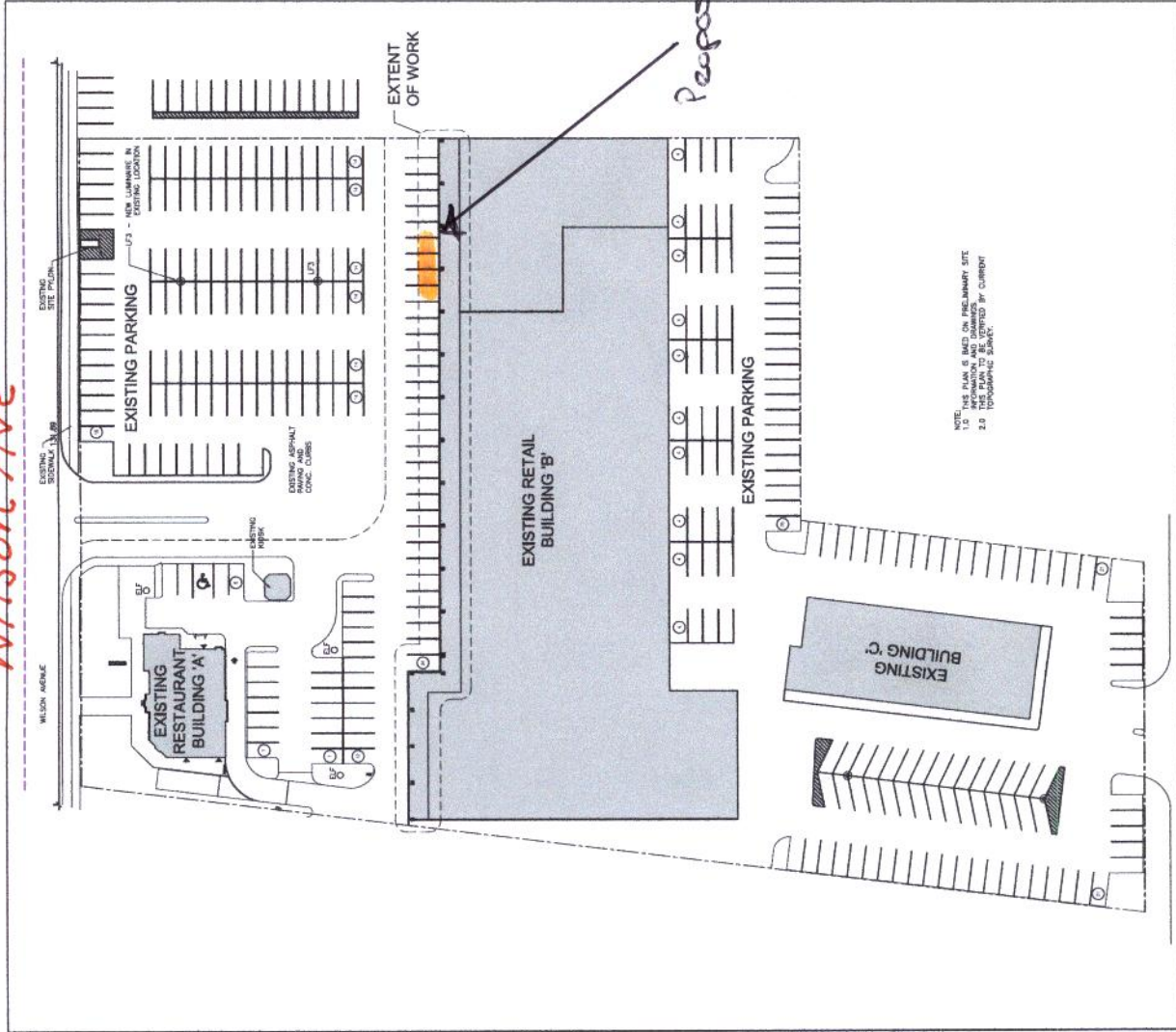




Wilson Ave



Proposed Wall Sign

2 SITE PLAN - EXISTING

LEGEND

- ① WALL PANEL
- ② WINDOW
- ③ DOOR
- ④ SIGN
- ⑤ CORNER

NO.	DATE	DESCRIPTION
1	2017.05.15	ISSUE FOR PERMIT
2	2017.05.15	ISSUE FOR PERMIT
3	2017.05.15	ISSUE FOR PERMIT
4	2017.05.15	ISSUE FOR PERMIT
5	2017.05.15	ISSUE FOR PERMIT
6	2017.05.15	ISSUE FOR PERMIT
7	2017.05.15	ISSUE FOR PERMIT
8	2017.05.15	ISSUE FOR PERMIT
9	2017.05.15	ISSUE FOR PERMIT
10	2017.05.15	ISSUE FOR PERMIT

JOSEPH BODIAN ARCHITECTS INC.
 1100 BAYVIEW AVE. SUITE 100
 SCARBOROUGH, ONTARIO M1B 2Y7
 TEL: (416) 291-7777
 FAX: (416) 291-4565

DATE: 2017.05.15
 DRAWING NO.: 06059-W-201

ALL DIMENSIONS UNLESS OTHERWISE SPECIFIED ARE IN METERS.
 ALL DIMENSIONS TO FACE UNLESS OTHERWISE SPECIFIED.
 DIMENSIONS TO FACE UNLESS OTHERWISE SPECIFIED.

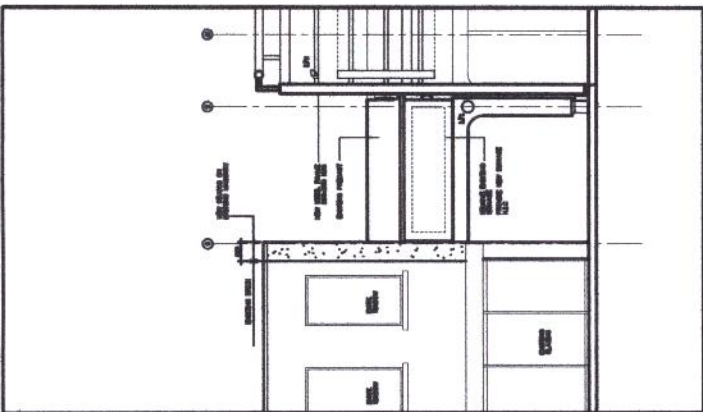
**YORK PLAZA
 FACADE RENOVATION**
 1595 - 1615,
 BAYVIEW AVE.
 TORONTO, ONTARIO

MADISON PROPERTIES
 1100 BAYVIEW AVE. SUITE 100
 SCARBOROUGH, ONTARIO M1B 2Y7
 TEL: (416) 291-7777
 FAX: (416) 291-4565

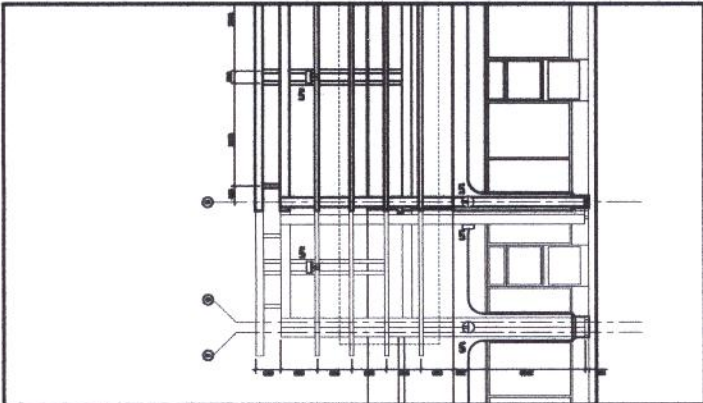
Architect
 Joseph Bodian
 Architectural Inc.
 1100 BAYVIEW AVE. SUITE 100
 SCARBOROUGH, ONTARIO M1B 2Y7
 TEL: (416) 291-7777
 FAX: (416) 291-4565

PROPOSED ELEVATIONS

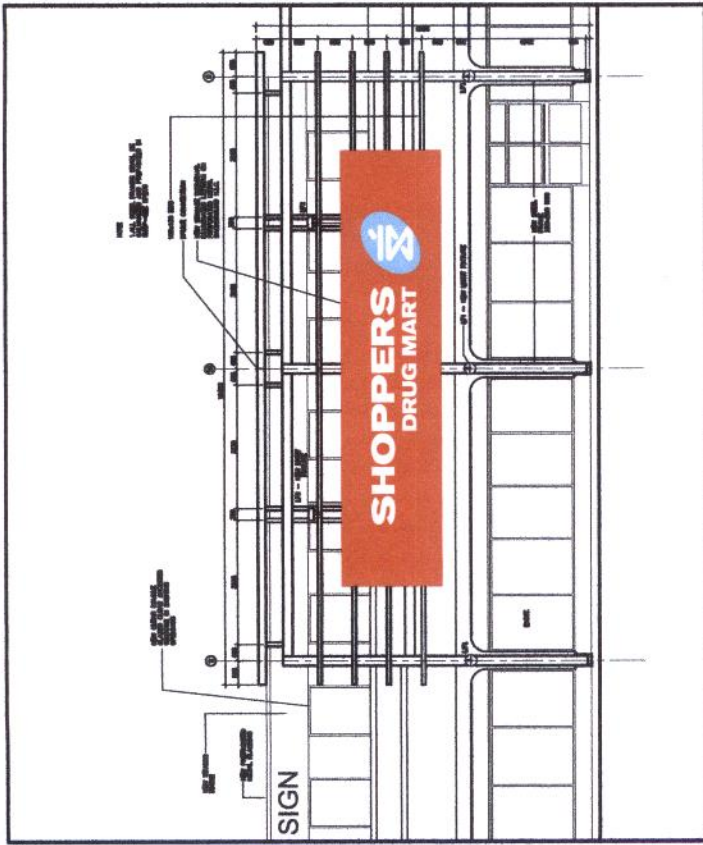
DATE: 2017.05.15
 DRAWING NO.: 06059-W-201



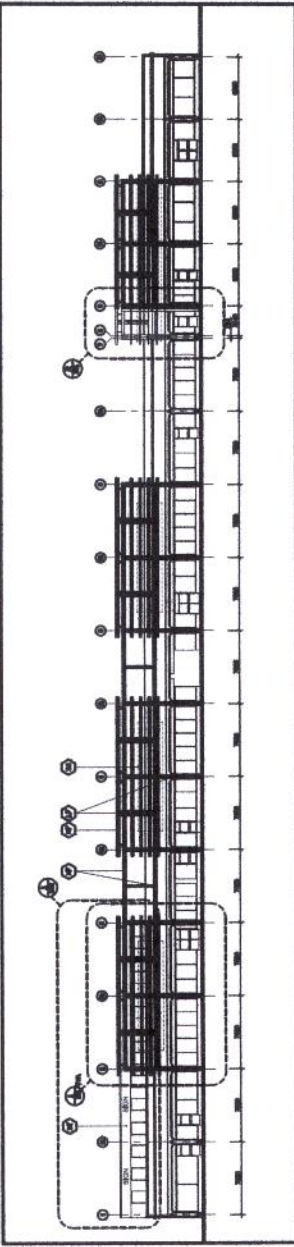
3 PART ELEVATION
 SCALE - 1/50



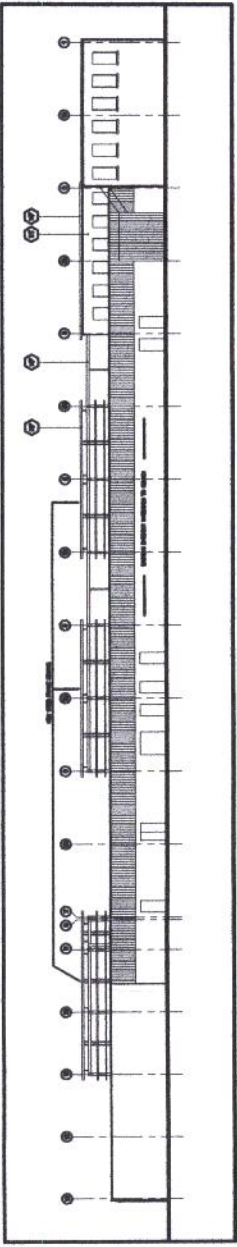
2 PART ELEVATION
 SCALE - 1/50



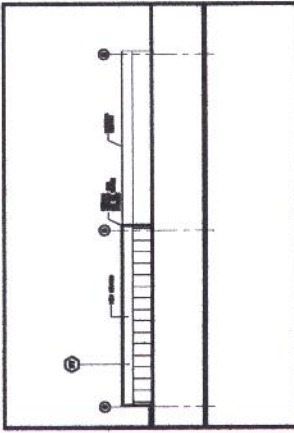
1 PART ELEVATION
 SCALE - 1/50



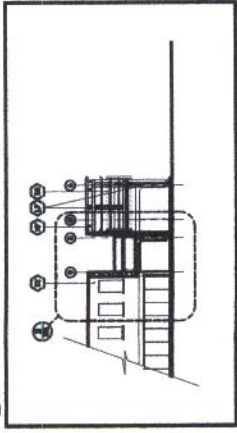
5 NORTH ELEVATION
 SCALE - 1/200



7 SOUTH ELEVATION
 SCALE - 1/200



4 WEST ELEVATION
 SCALE - 1/200

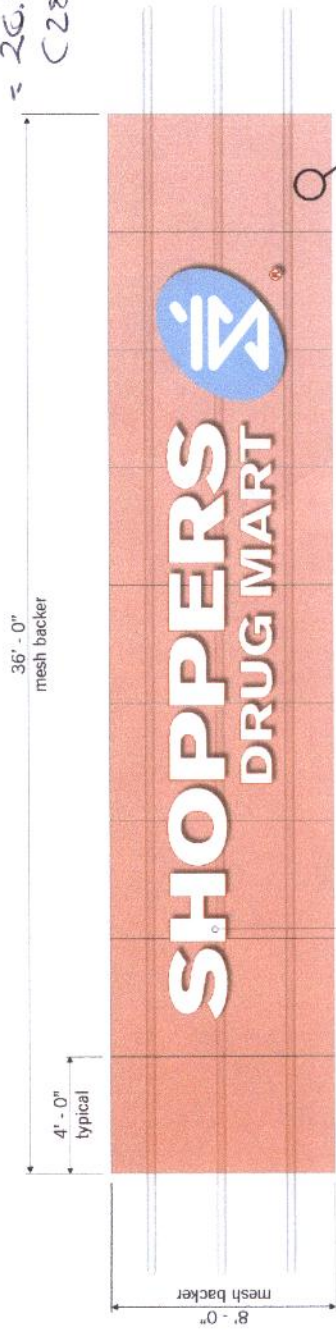


6 EAST ELEVATION
 SCALE - 1/200

LED Illuminated Channel Letters on On Perforated Aluminum Backer

Scale: N.T.S. Total Sign Area

MESH BACKER AREA
= 26.75 m²
(288 sq ft)



Perforated 5mm thick aluminum panels painted "shoppers red"

channel letters (24" high letter 'H') as per part SDM_CL055x0323.124A

Material Specifications

- 5mm thick aluminum mesh panel painted 'Shoppers' red
- Mesh backer installed to existing steel tube structure at site
- ****Site check required**

SDM_CL055x0323.124A

Shoppers Drug Mart

- Pre-finished "Shoppers Red" aluminum coil returns
- 3/16" white acrylic faces
- 1" jewelite red trim cap
- White LED illumination

Logo

- Aluminum constructed returns primed and painted light blue pms 543
- 3/16" white acrylic face with light blue 3m 3632-7788 applied to 1st surface (white image)
- White pvc "F" trim cap painted light blue pms 543
- T8 Fluorescent illumination

Registration Mark

- .125 routed aluminum disc face and edges painted 'Shoppers Red'
- White A6001-o opaque vinyl graphics

- Restored artwork required.
- Digital image for printing required.
- Final colour specifications required.
- Site check required.
- Preliminary Artwork
- Approved for Production



Store #990
Toronto, Ontario



PRIDE SIGNS.
280 HOLIDAY INN DRIVE CAMBRIDGE ONTARIO CANADA TEL: 519.220.0595 FAX: 519.220.2968 WWW.PRIDESIGNS.COM

CLIENT APPROVAL
REVISION DATES:
July 17, 2008
J. Lewis

DRAWN BY: B. Guse
DATE: July 1, 2008

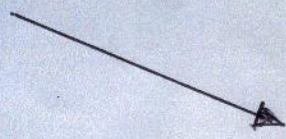
NORTH ELEVATION

new facade on
which Shoppers Drug
MACT sign will be
installed.



Another tenant in plaza
which has similar signage
to proposed Shoppers Drug
Mart sign.

(No 2nd Storey)



Scotiabank

DISCOUNT
BLAZE

