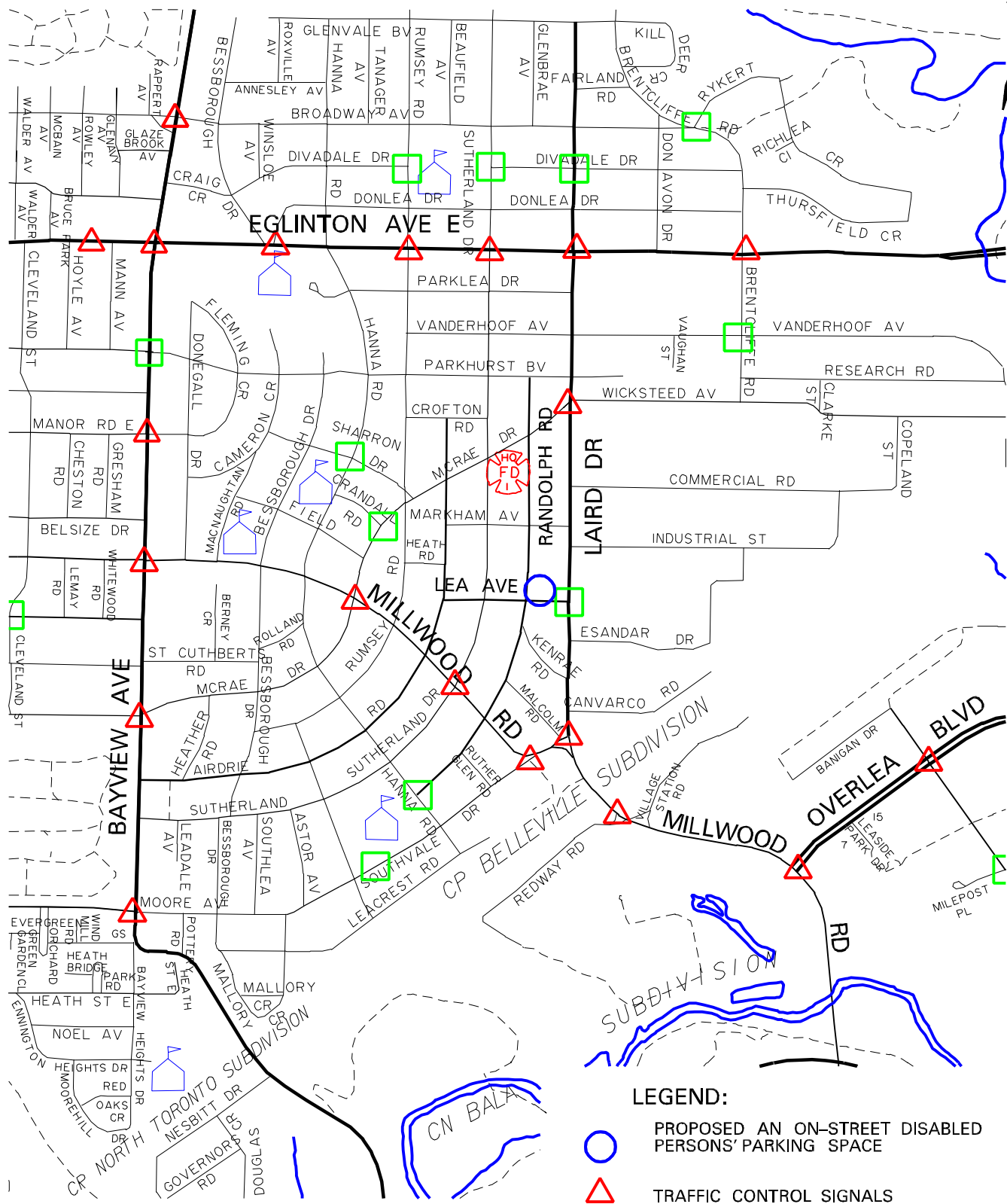





ny08038\_map



**LEGEND:**

-  PROPOSED AN ON-STREET DISABLED PERSONS' PARKING SPACE
-  TRAFFIC CONTROL SIGNALS
-  PEDESTRIAN CROSSOVER



LOCATION  
 LEA AVENUE FROM  
 A POINT 22 m EAST OF RANDOLPH ROAD AND  
 A POINT 5.5 m EAST  
 DISABLED PERSONS' PARKING SPACE