

ny08039\_map2

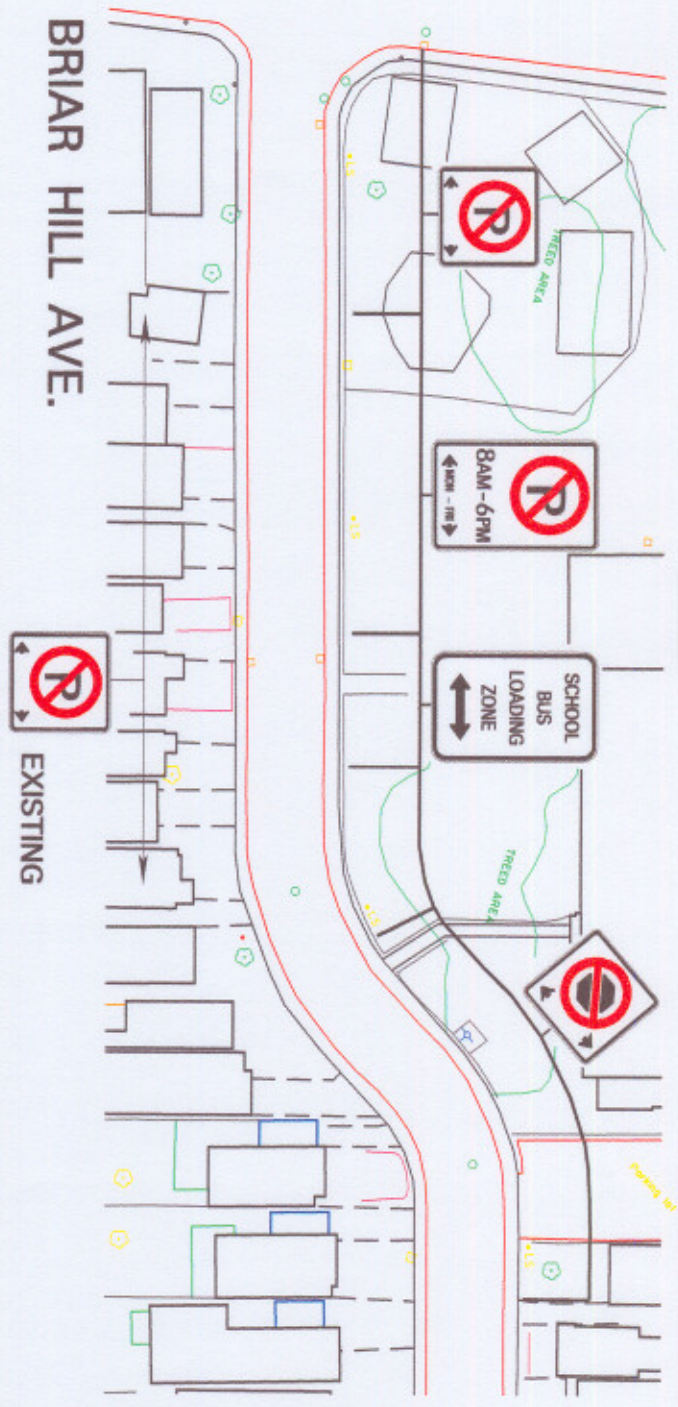


DUFFERIN ST.

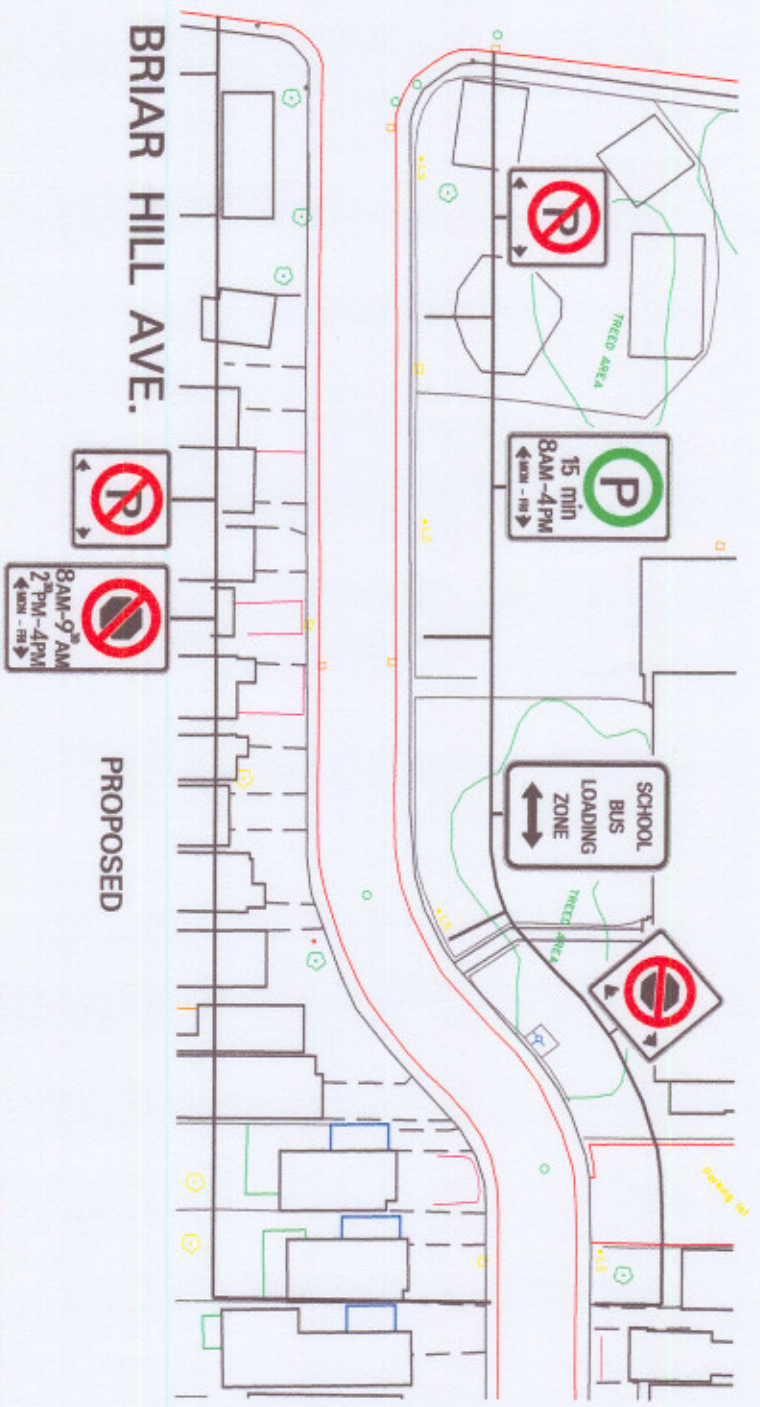
DUFFERIN ST.

BRIAR HILL AVE.

BRIAR HILL AVE.



EXISTING STOPPING / PARKING RESTRICTIONS



PROPOSED STOPPING / PARKING RESTRICTIONS



LOCATION  
BRIAR HILL PUBLIC SCHOOL  
SCHOOL ZONE REVIEW