

Lawrence Avenue East

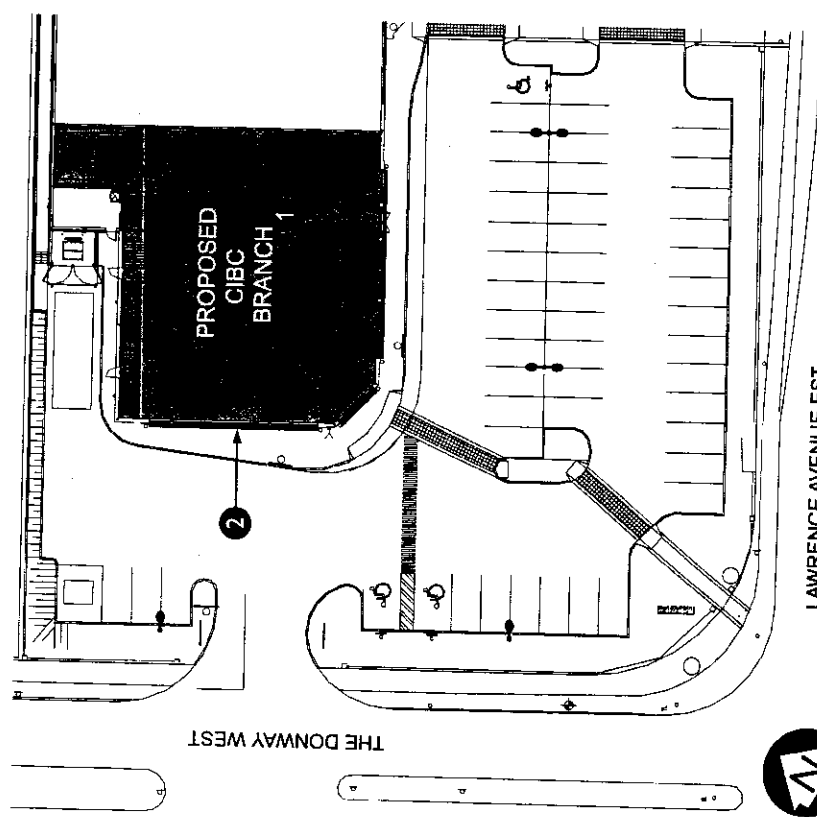
Don Mills Road

THE DONWAY WEST

THE DONWAY EAST



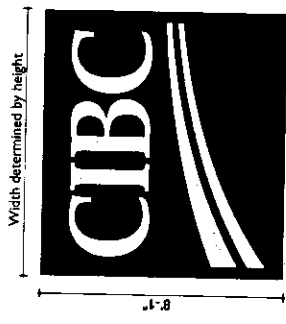
THE DONWAY EAST



**SITE DEVELOPMENT PLAN**  
Scale: NTS.

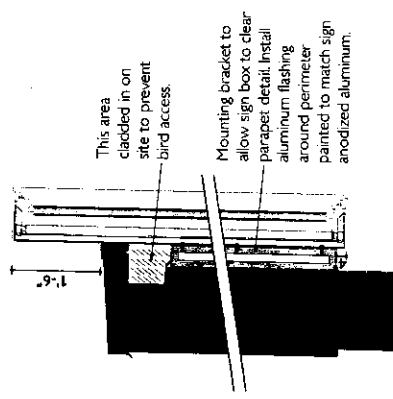


Donway & Lawrence Ave., North York, ON  
New CIBC Signage - Site Plan & Graphic Detail Drawings  
Tr# 00132 - July 23, 2007 - Page 3



**Signs #1**  
Scale: 1/4" = 1'-0"

- Sign #1: Frameless Flexible Vinyl Illuminated Box Sign**
- SignPro Single Face Filler #851 (Clear Anodized) w/ SRT Frameless Frame #SR2011 (Clear Anodized).
  - Panaflex #945 by 3M - one piece of material for large signs.
  - Graphics: First Surface
  - "CIBC" Wordmark in Yellow #VQ-11655 by 3M
  - Arc in Yellow #VQ-11655 by 3M and White
  - Background in Claret #VQ-11654 over #VQ-11655 by 3M
  - Sign to be mounted on building surface using mounting brackets as outlined in Detail Section (below)
  - Recommended lighting: Logo: 11 x 8 HO Daylight vertical lamps.
- Note: All dimensions to be confirmed on site.



**DETAIL SECTION**  
Scale: 1/2" = 1'-0"  
Signs #1 & #2

Note: Exact installation details, location and dimensions to be confirmed on site.

- Sign #2: Frameless Flexible Vinyl Non-Illuminated Band Sign**
- SignPro Single Face Filler #681 w/ SRT Frameless Frame #SR2011 (all clear anodized).
  - Panaflex #945 by 3M - one piece of materials for large signs.
  - Graphics: First Surface
  - "CIBC Banking Centre" in Yellow #VQ-11655 by 3M
  - "Instant teller & Keyline in Yellow #VQ-11655 by 3M
  - Background in Claret #VQ-11654 over #VQ-11655 by 3M
  - Bottom of band signs to align with the existing sign.
  - Sign to be mounted on building face.
- Note: All dimensions to be confirmed on site.

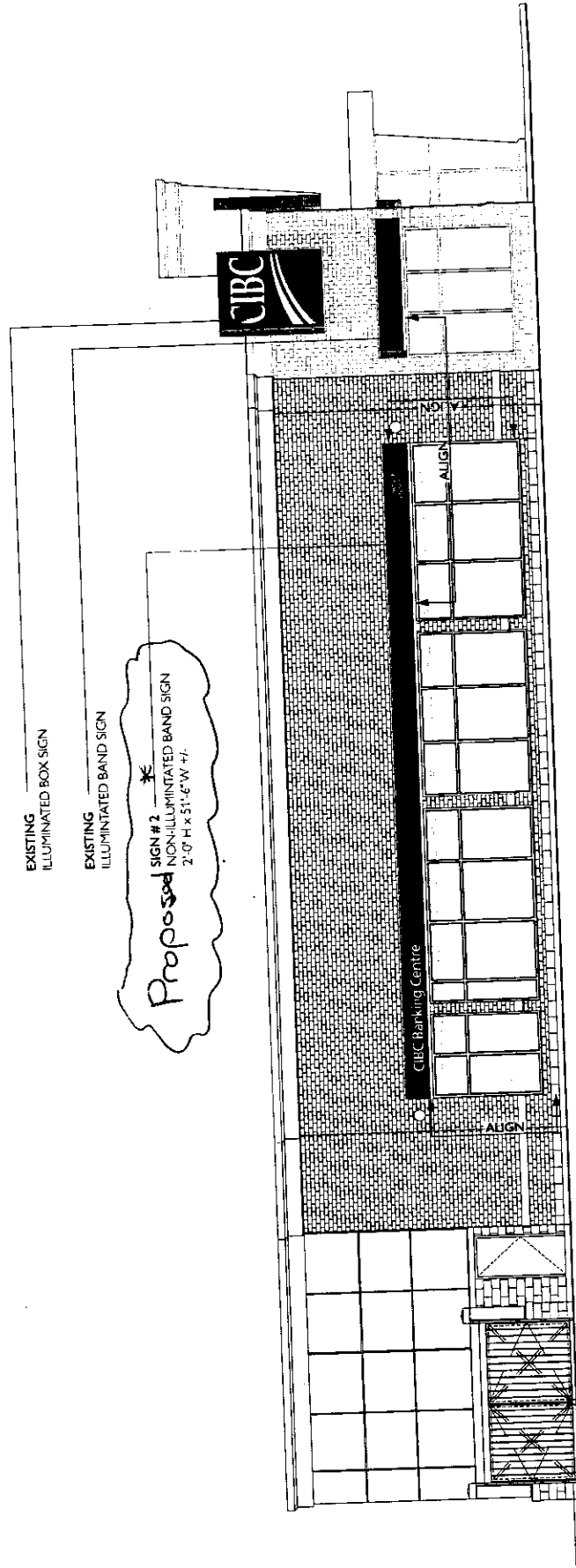
**Sign #2**  
Scale: 1/2" = 1'-0"



**WEST ELEVATION**

Scale: 1/8" = 1'-0"

**Note:**  
All lighting described are recommendations only. All sign vendors are expected to provide costing based on lighting as per stipulations listed in the accompanying specification, General Requirements.



Donway and Lawrence Ave., North York, ON  
New CIBC Signage - Exterior-West Elevation  
Tr# 00132 - July 21, 2007 - Page 1

HOK CANADA

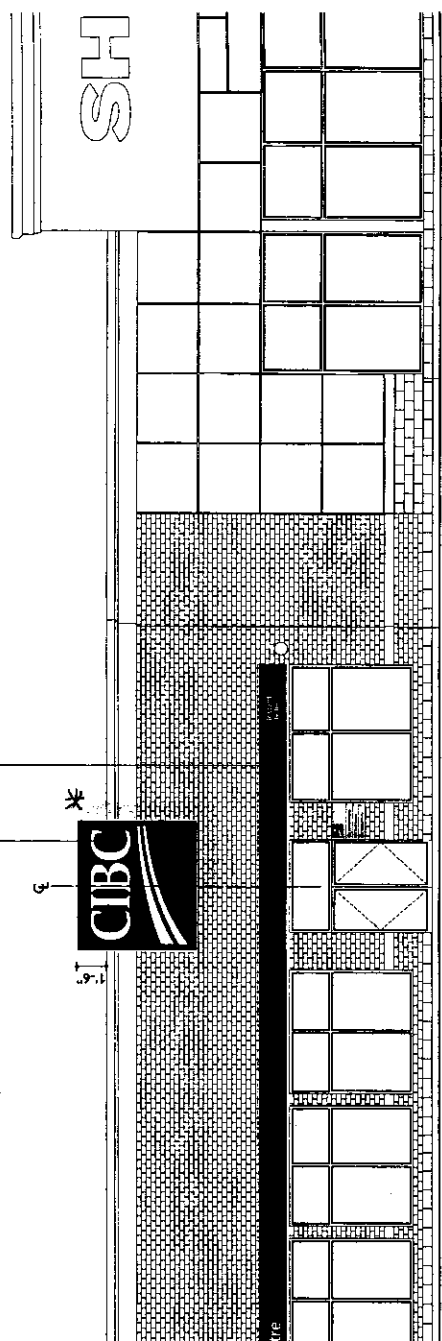


EXISTING  
ILLUMINATED BOX SIGN

EXISTING  
ILLUMINATED BAND SIGN

EXISTING  
ILLUMINATED BAND SIGN

*Proposed*  
SIGN # 1  
ILLUMINATED BOX SIGN  
8'-11" H x 8'-10" W +/- Width determined by height.





21 Melinda Street  
Commerce Court East  
Toronto, ON  
M5V 3C9

April 2<sup>nd</sup>, 2008

Ms. Joanne Battaglia  
Zoning Examiner  
City of Toronto  
Toronto Building North District

Dear Ms. Battaglia:

CIBC opened a new branch on April 30<sup>th</sup>, 2007 at the corner of Lawrence Ave. and the Donway. This was a result of the redevelopment of the Don Mills Shopping Centre that forced our existing location to close. The new branch represents a significant investment in the community.

CIBC takes the concerns of the community seriously. That is why I met with Mr. Terry West, President of the Don Mills Residents Inc. to discuss the group's concerns with the proposed signage. I understood the concerns raised by Mr. West and we reached a compromise suitable to both parties. We agreed to remove the imagery from the proposal but leave a square logo sign over the door and add a non-illuminated sign band on the west façade.

The additional signage is important for the following reasons:

- The logo on the south façade will help to signify the entrance of the building. On approach the entrance does not stand out visually; the logo sign will draw attention to the entrance.
- Aesthetically the logo sign will add visual weight to the south façade, which is currently somewhat blank and featureless. The sign band on the west façade will make the band effect continuous but because it will not be illuminated it should not disturb residents to the west of the branch.
- From even a small distance to the south the identification of the building as CIBC is not clear. The logo sign will greatly increase the awareness of the branch to passing motorists and pedestrians.

Your help in facilitating the approvals required for signage to be installed would be greatly appreciated.

Kind Regards,

A handwritten signature in black ink, appearing to read "M. S. Reece", written over a horizontal line.

Matthew Reece  
Senior Program Manager  
CIBC Corporate Real Estate