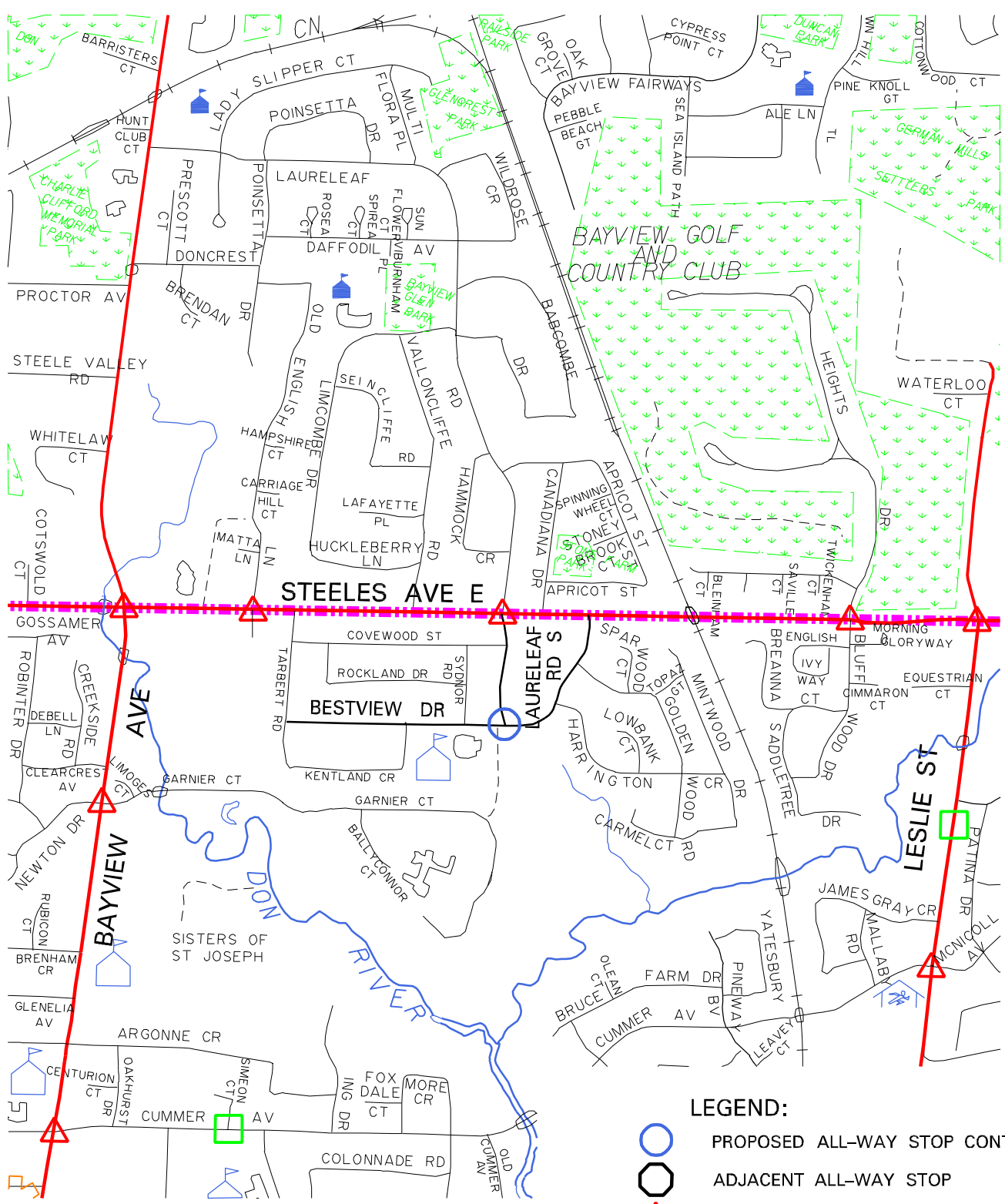






ny08048_map



LEGEND:

-  PROPOSED ALL-WAY STOP CONTROL
-  ADJACENT ALL-WAY STOP
-  TRAFFIC CONTROL SIGNALS
-  PEDESTRIAN CROSSOVER



LOCATION
 BESTVIEW DRIVE AT LAURELEAF ROAD SOUTH
 ALL-WAY STOP CONTROL