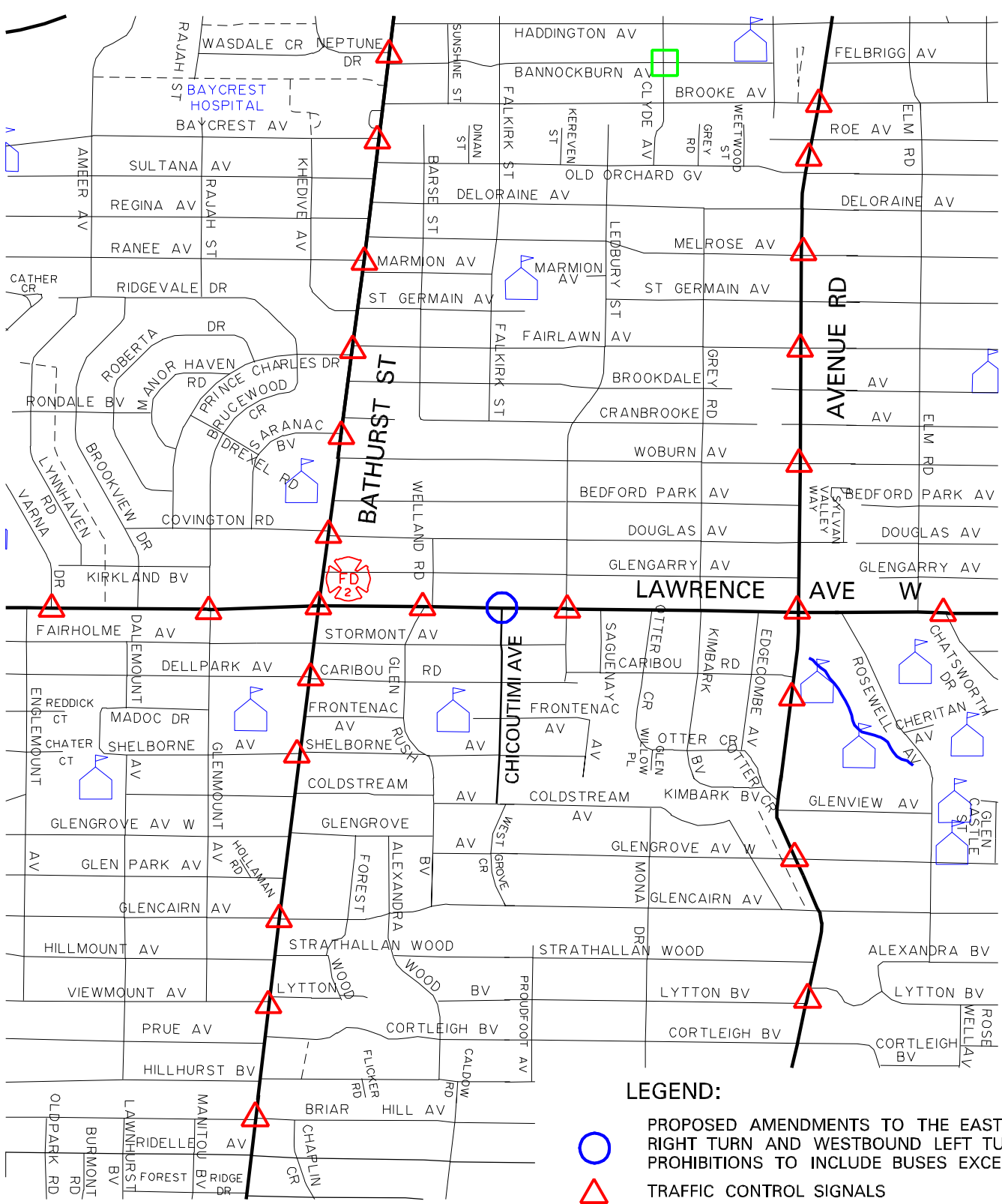


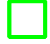


ny08051



LEGEND:

-  PROPOSED AMENDMENTS TO THE EASTBOUND RIGHT TURN AND WESTBOUND LEFT TURN PROHIBITIONS TO INCLUDE BUSES EXCEPTED
-  TRAFFIC CONTROL SIGNALS
-  PEDESTRIAN CROSSOVER



LOCATION
LAWRENCE AVENUE WEST AT CHICOUTIMI AVENUE
TURN RESTRICTIONS - BUSES EXCEPTED