

Parks & Environment Committee

The Living City

June 11, 2008

By Brian Denney
Chief Administrative Officer





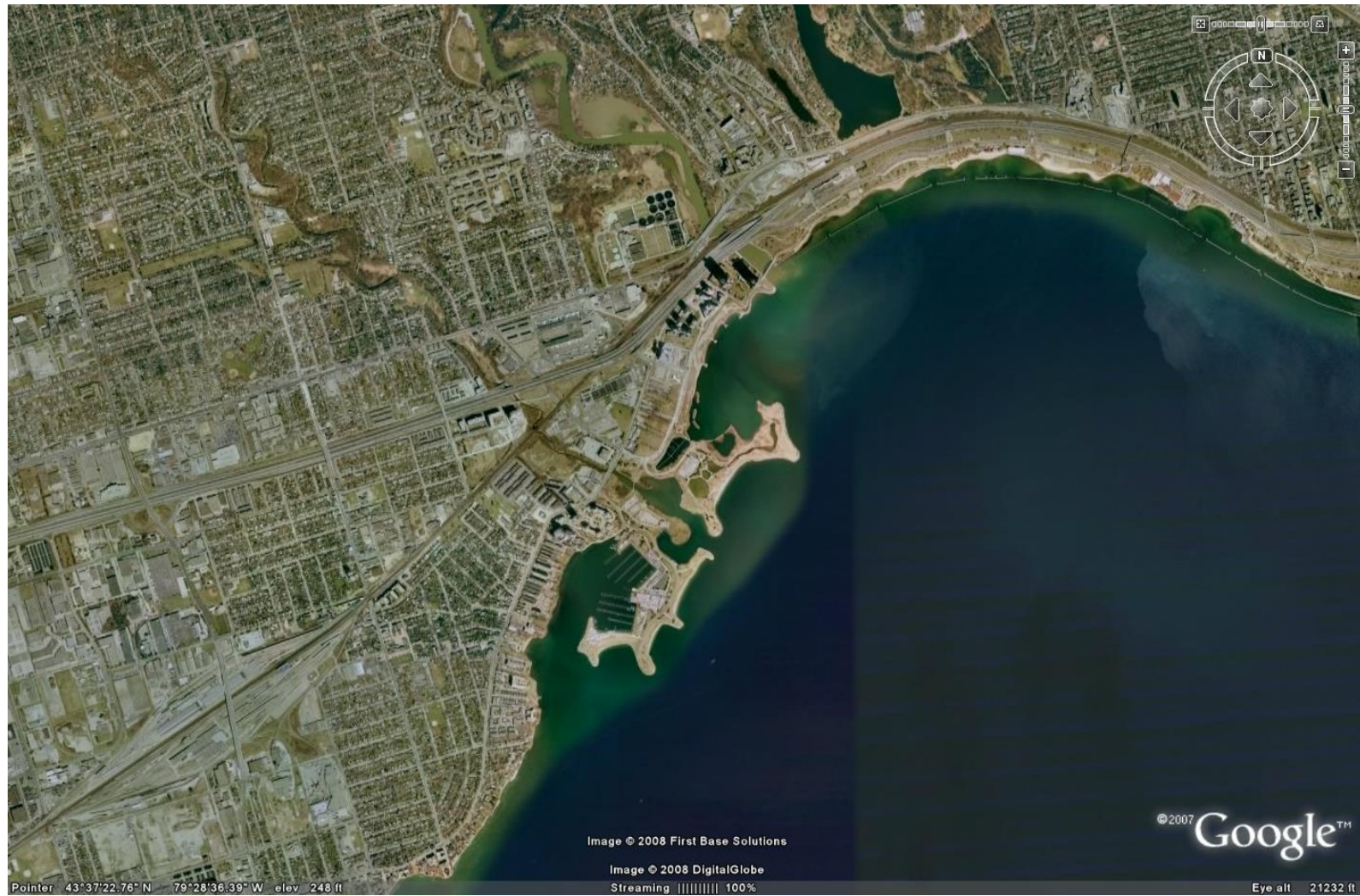
Key Agreements

- 1961 Valley Land Management Agreement
- 1970 Waterfront Management Agreement
- Various Eligible Recipient Agreements with Waterfront Toronto





Mimico Waterfront Linear Park





Mimico Waterfront Linear Park



Don Mouth Naturalization and Port Lands Flood Protection Project EA



Member of Conservation Ontario

Toronto and Region Conservation  for *The Living City*





GREEN BUILDING COUNCILS

12 green building councils
5 emerging members
total of 47 countries

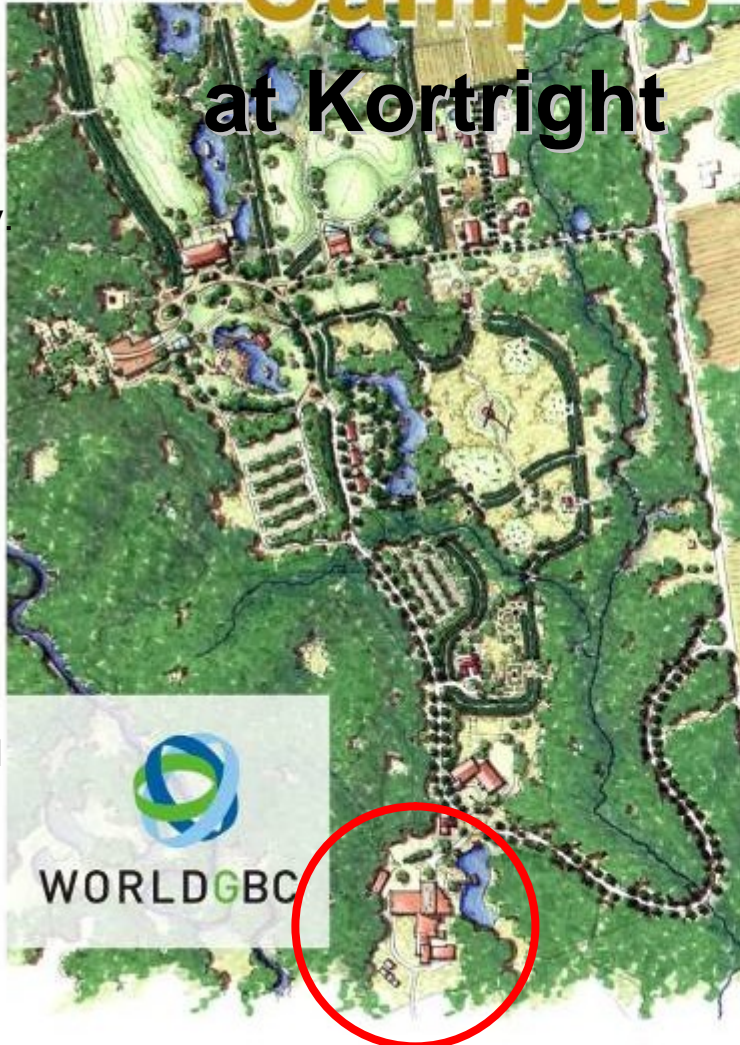
The Living City Campus



at Kortright

The Living City Campus at Kortright inspires people from all over the world to live more sustainably. From renewable energy to green buildings and community design, visitors experience the latest in green living strategies.

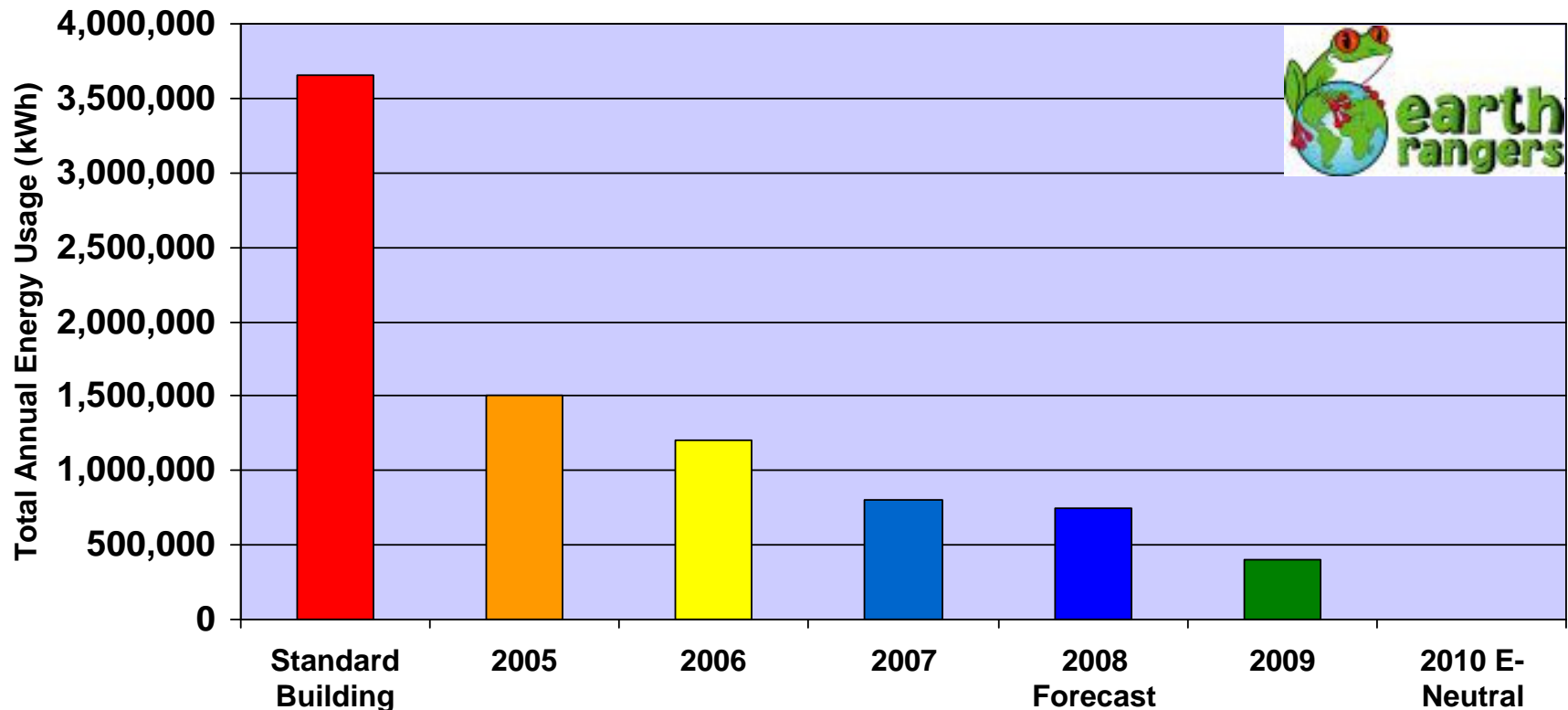
The WorldGBC Secretariat operates out of the **Earth Rangers** LEED Gold building, one of a number of green building showcases on the Campus.





Earth Rangers Building Energy Usage

ERC Annual Total Energy Usage vs. Model National Energy Code Design Reference Building Model
Gas Conversion Rate 10.5 kWh/m³





Archetype Sustainable House

To be Constructed July 2008



- Contribute to reduction in energy demand/consumption from a traditional house:
 - 50% reduction in heating
 - 50% reduction in hot water
 - 50% reduction in electrical plug loads
 - 100% solar supplied electrical plug load
- Targets:
 - House A – LEED Gold
 - House B – LEED Platinum



Watershed Restoration Projects

Wilket Creek



Edwards Gardens





Wicksteed Erosion Control Project

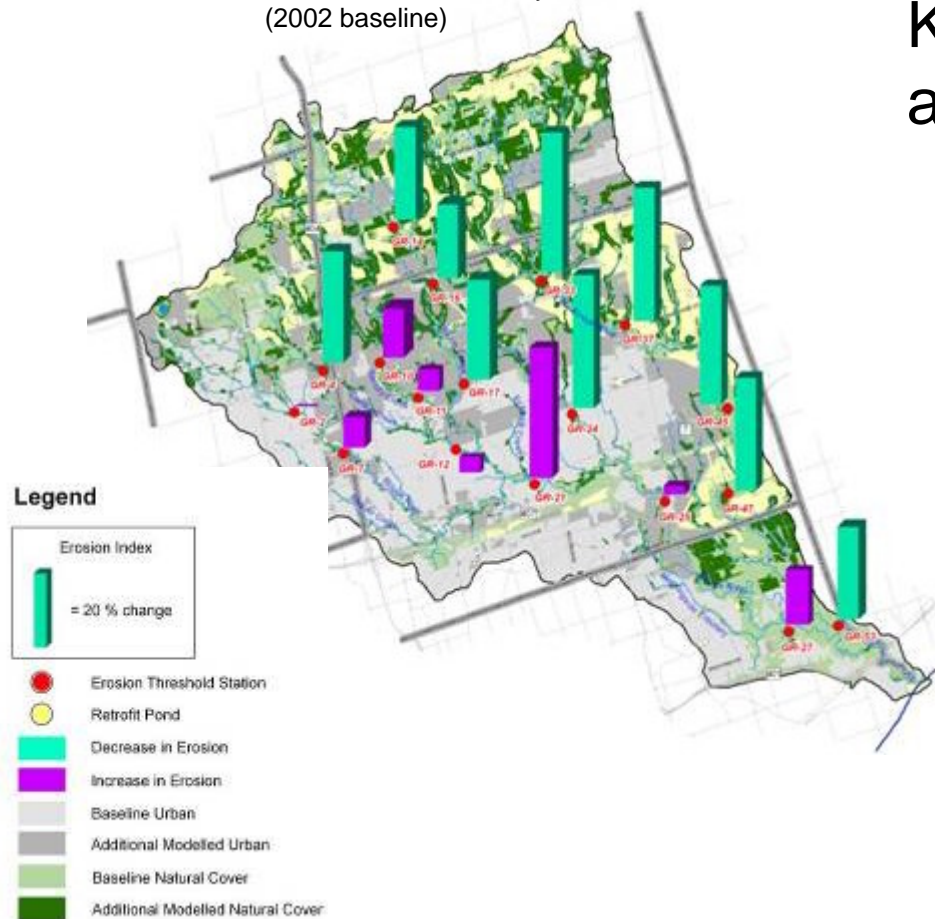




Rouge Watershed Strategy

Effect of “sustainable communities”

Effect of “Sustainable Community”
(2002 baseline)

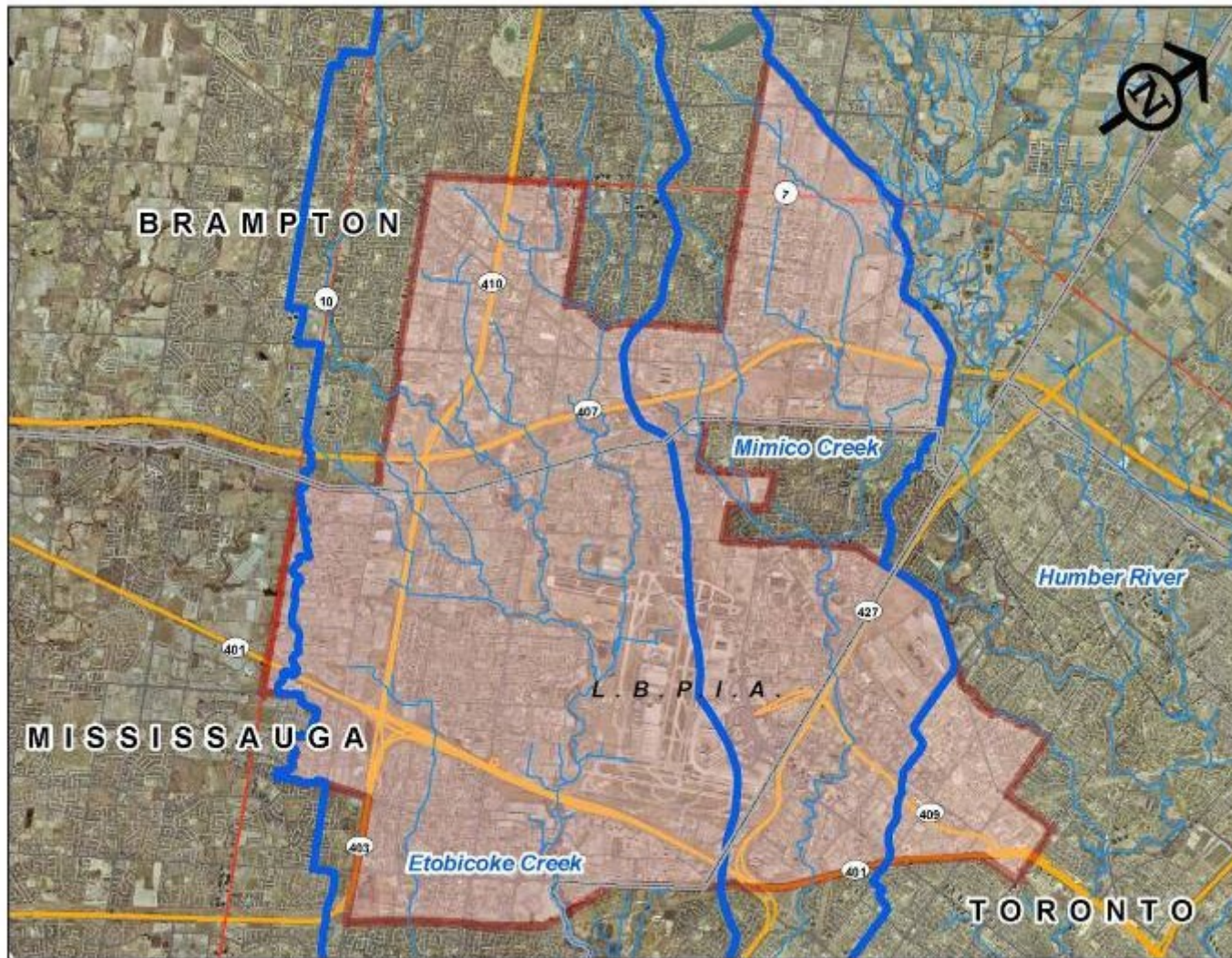


Key water management assumptions:

- Increase natural cover
- Manage water balance in new communities
- Retrofit stormwater management practices in existing urban areas
- More “sustainable” community designs and practices overall



Partners in Project Green



Member of Conservation Ontario

Toronto and Region Conservation  for *The Living City*



Pearson Eco-Business Zone



Zerofootprint Toronto and Living City Zerofootprint and Region of Peel Carbon Calculator





EcoOffice Upgrades



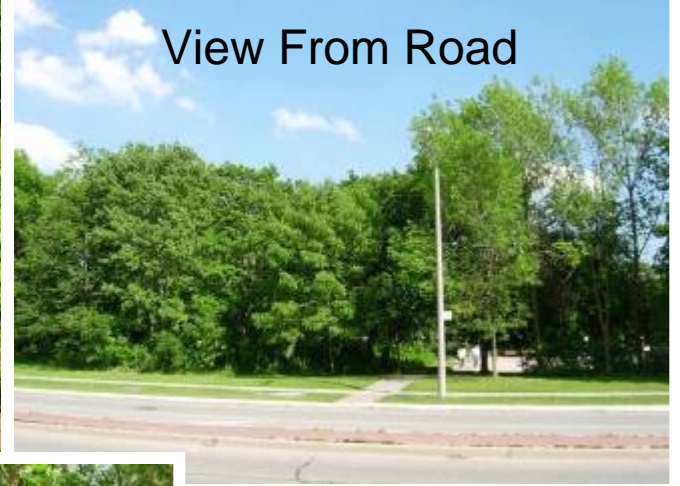
Front Entrance



Window Shading



View From Road



Parking Lot Runoff Wetland



Road Entrance






CNE Project/Example of TRCA Collaboration with TAF & Exhibition Place

[Introduction](#) [Live Data](#) [Web Cam](#) [How It Works](#)

In August 2006 the Horse Palace at Exhibition Place became home to Canada's largest solar photovoltaic installation. With a peak operating power output of 100 kW this system will generate roughly 120 MWhr of electricity annually.

Designed by Carmanah Technologies in partnership with Exhibition Place, this pilot project was jointly funded by the Federation of Canadian Municipalities' Green Municipal Fund, Toronto Atmospheric Fund, and the Better Buildings Partnership of Toronto.

Exhibition Place will use the data accumulated by this monitoring system to compare various aspects of the system allowing it to determine the best overall combination of technologies for use in future projects. Please follow the adjacent links to learn more about the electrical performance of this unique power system.

Exhibition Place  **Carmanah**[®]

BBP **TORONTO Atmospheric Fund** **FCM**
Federation of Canadian Municipalities

Fat Spaniel TECHNOLOGIES

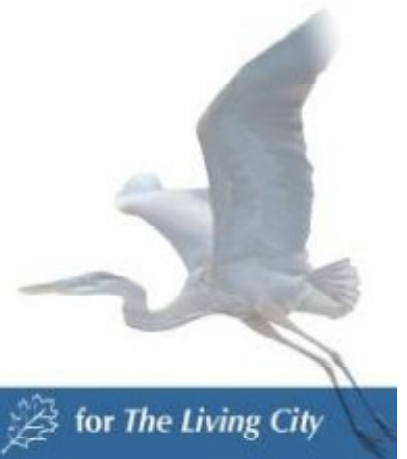
Tommy Thompson Park Natural Area Enhancement





Other Projects of Interest

- PAIE program – to date we have placed 24 internationally-trained professionals.
- Planting and Reforestation – in 2008 TRCA will install approximately 375,000 trees, shrubs and wetland plants.



Parks & Environment Committee

The Living City

June 11, 2008

By Brian Denney
Chief Administrative Officer

