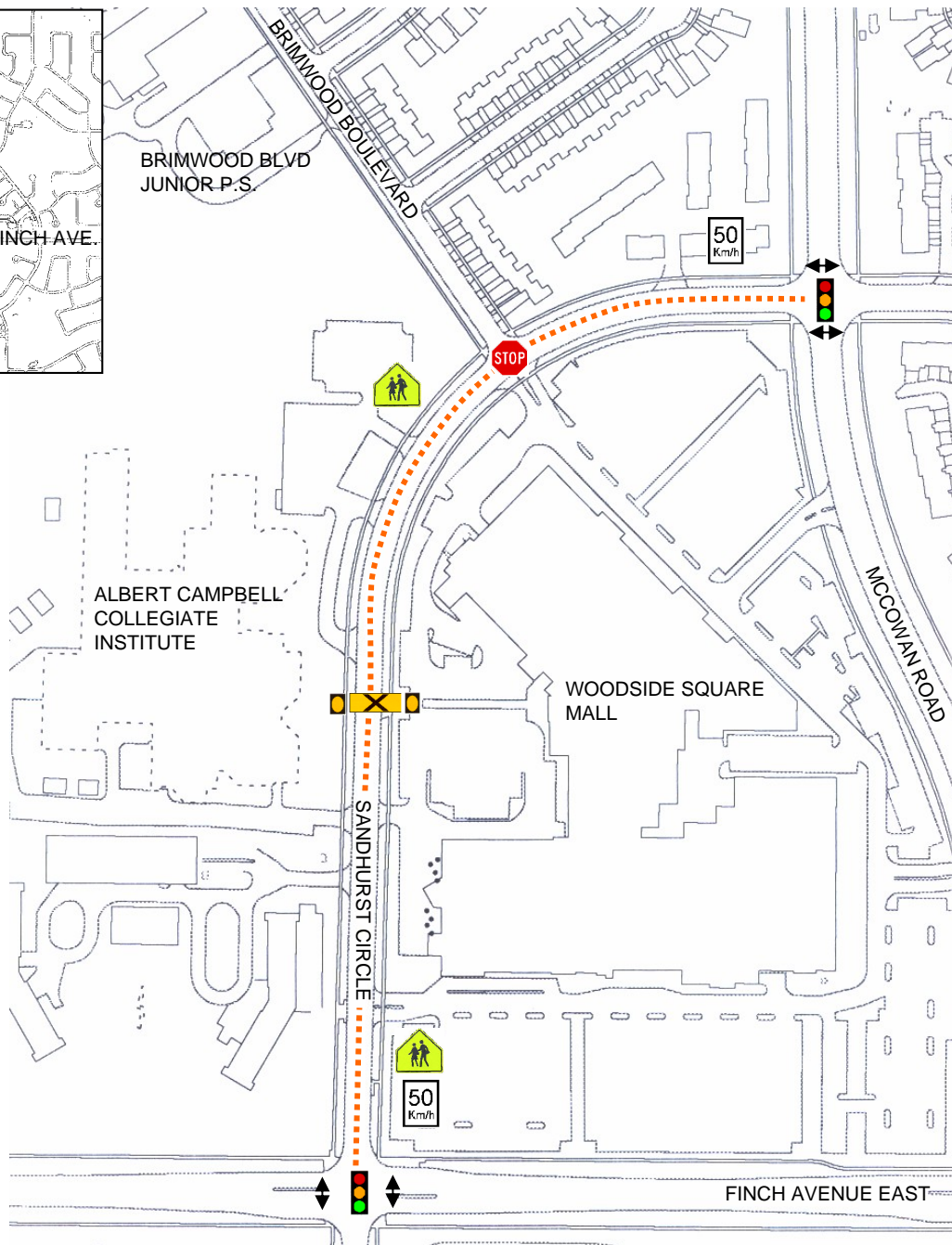
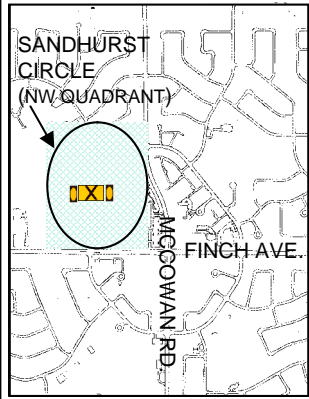








AREA MAP



LEGEND

-  EXISTING TRAFFIC CONTROL SIGNALS
-  EXISTING SPEED LIMIT
-  EXISTING ALL-WAY STOP CONTROL
-  PROPOSED SPEED LIMIT REDUCTION FROM 50 Km/h TO 40 Km/h ON SANDHURST CIRCLE FROM McCOWAN ROAD TO FINCH AVENUE EAST (NW QUADRANT)
-  EXISTING PEDESTRIAN CROSSOVER
-  EXISTING SCHOOL AREA SIGNS FLUORESCENT YELLOW/GREEN BACKGROUND



TRANSPORTATION SERVICES

TRAFFIC SERVICES
Scarborough District

SCALE:	NTS
DATE:	04/04/08
DRAFTING:	JE/JAB W41

**PROPOSED 40 Km/h SPEED LIMIT
SANDHURST CIRCLE
NORTHWEST QUADRANT OF SANDHURST CIRCLE**

FILE NUMBER: D08-424
ATTACHMENT NUMBER 2