

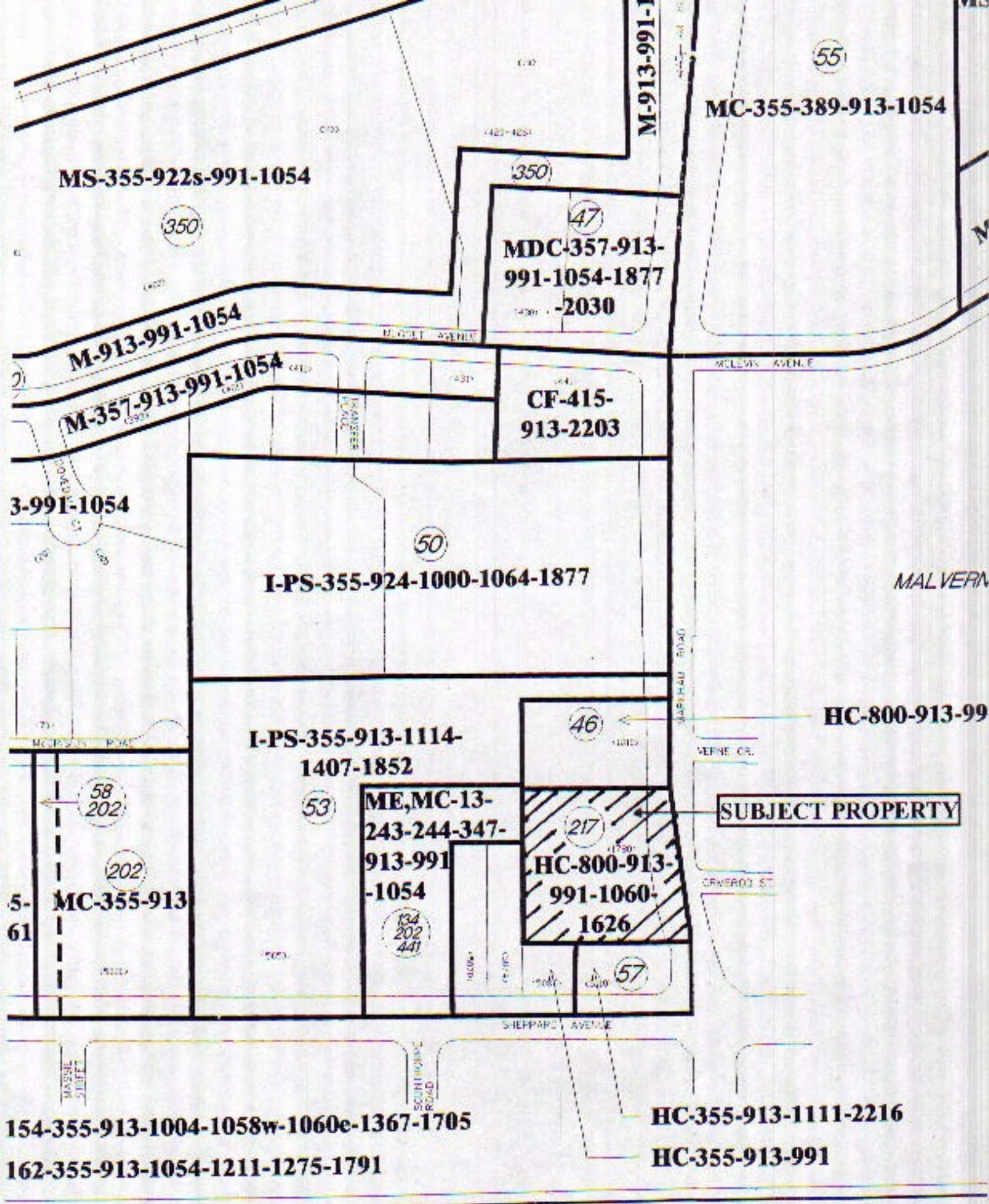
MARKHAM ROAD THE KING'S HIGHWAY No. 48

ROAD ADJACENT (SECTION LOTS 13 & 14, CONVERSION 1
 PLAN 60R-0206(1))



SHEPPARD AVENUE

ATTACHMENT 1 – SITE PLAN

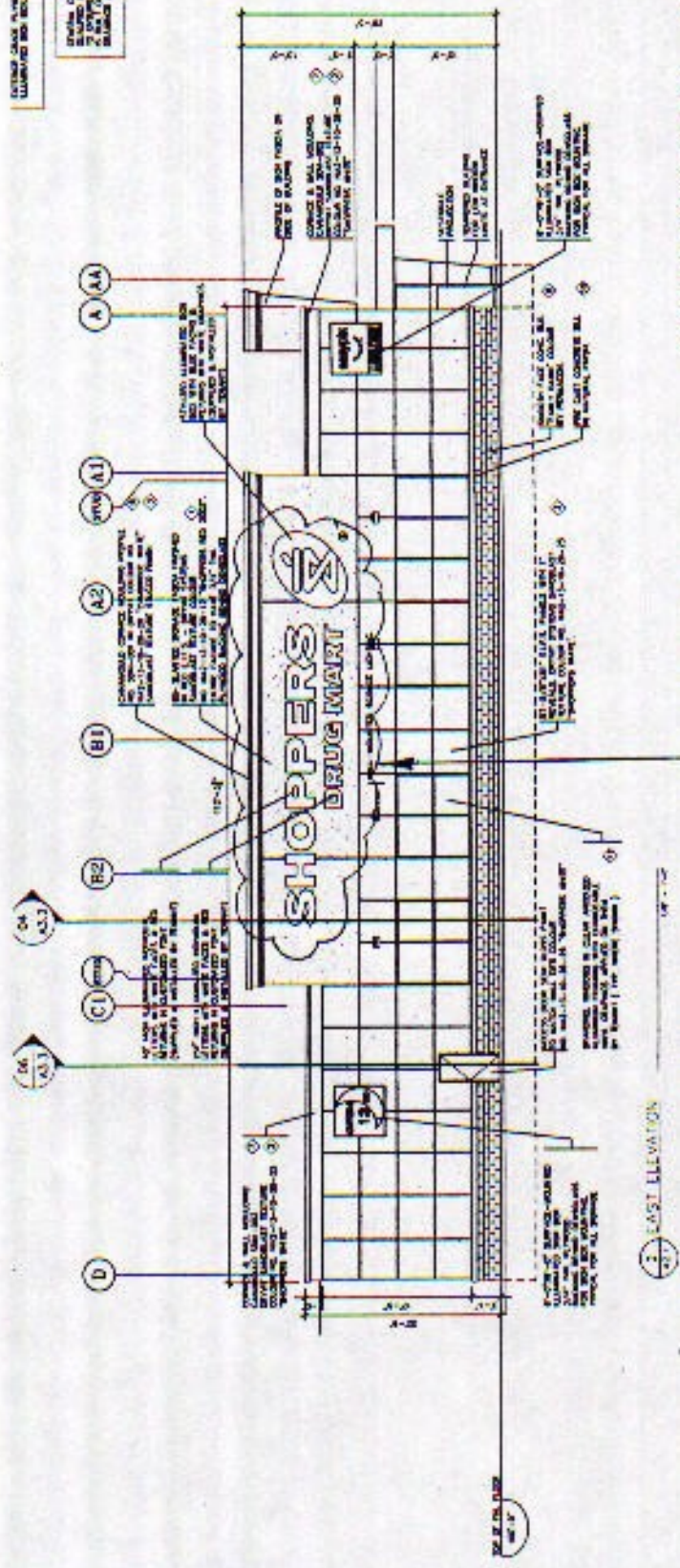


ATTACHMENT 2 - ZONING MAP

EXTENDED GRADE PLUMBED BRICK WALL WITH
ILLUMINATED SIGN

THESE CONSTRUCTION TO INCLUDE:
1. BRICK WALL TO BE 12" MIN. THICK
2. BRICK WALL TO BE 12" MIN. THICK
3. BRICK WALL TO BE 12" MIN. THICK
4. BRICK WALL TO BE 12" MIN. THICK

- 1. WALL TO BE 12" MIN. THICK
- 2. BRICK WALL TO BE 12" MIN. THICK
- 3. BRICK WALL TO BE 12" MIN. THICK
- 4. BRICK WALL TO BE 12" MIN. THICK
- 5. BRICK WALL TO BE 12" MIN. THICK
- 6. BRICK WALL TO BE 12" MIN. THICK
- 7. BRICK WALL TO BE 12" MIN. THICK
- 8. BRICK WALL TO BE 12" MIN. THICK
- 9. BRICK WALL TO BE 12" MIN. THICK
- 10. BRICK WALL TO BE 12" MIN. THICK
- 11. BRICK WALL TO BE 12" MIN. THICK
- 12. BRICK WALL TO BE 12" MIN. THICK
- 13. BRICK WALL TO BE 12" MIN. THICK
- 14. BRICK WALL TO BE 12" MIN. THICK
- 15. BRICK WALL TO BE 12" MIN. THICK
- 16. BRICK WALL TO BE 12" MIN. THICK
- 17. BRICK WALL TO BE 12" MIN. THICK
- 18. BRICK WALL TO BE 12" MIN. THICK
- 19. BRICK WALL TO BE 12" MIN. THICK
- 20. BRICK WALL TO BE 12" MIN. THICK



ATTACHMENT 3 - SIGN ELEVATIONS

PROPOSED WALL SIGNS UNDER THIS APPLICATION

Illuminated Channel Letters and Logo
Scale: A:1.5

Sign Area – SDM CL40
Shoppers – 11.02m²
Drug Mart – 3.81m²
Logo – 5.59m²
20.42m²



Illuminated Channel Letters and Logo

- Shoppers Drug Mart**
- Pre-painted "Shoppers Red" aluminum returns
 - 3/16" white acrylic faces
 - 1" jewelite red trim cap
 - 15mm Designer White neon illumination

Logo

- Aluminum constructed returns painted light blue pms #543
- White flex with light blue 3m VQ #11060 applied to 1st surface (white image)
- Pride pls cover (frameless) painted white painted light blue pms #543
- Fluorescent illumination

Registration mark

- .125 routed aluminum disc face and edges painted "Shoppers Red"
- White avery #A6001-0 opaque vinyl graphics

ATTACHMENT 5 – SIGN DETAILS



PRIDE DESIGNS
 370 HOLIDAY INN DRIVE, CAMBRIDGE, ONTARIO, CANADA
 TEL: 519 226-0925 FAX: 519 226-6446 WWW.PRIDEDESIGNS.COM



Various Locations



DRAWN BY:
DATE: JUNE 2008