

*"The sidewalks are where people become Torontonians. The public realm allows us to come together as citizens, residents, and visitors to enjoy, discover and appreciate this wonderful city. The Coordinated Street Furniture program will not only improve, but elevate and celebrate Toronto's urban beauty."*

-- Mayor David Miller

## 7.0 URBAN DESIGN GUIDELINES

The Urban Design Guidelines outlined below are divided into three sections: Streetscape improvements (including both public and private realm elements), Parks and Open Space Enhancements and Built Form. Together with the recommended policy and zoning direction provided in Section 5.0, the Urban Design Guidelines assist with articulating implementation of the study vision and provide a reference for public and private sector initiatives throughout the corridor.

### 7.1 STREETScape IMPROVEMENTS

Lawrence Avenue East has a wide range of building types, heights, setbacks, design and appearance, and a variety of streetscape treatments. There is a need for a common streetscape plan that will provide a unified appearance to the Study Area, and create a pedestrian friendly environment. The elements that form part of such a streetscape plan may include wider sidewalks, street trees, pedestrian-scale street lighting, banners, benches, information kiosks, transit stops, bicycle racks, recycling bins, and signage.

#### 7.1.1 Streetscape Elements

The proposals outlined in this section are intended to occur within the existing public right-of-way (R.O.W) to improve the level of pedestrian comfort and improve unity along the street (for illustration purposes, refer to Figure 6.1).

#### Sidewalk

The existing sidewalks are approximately 1.5 metres wide and are generally located too close to the curb to allow for street tree planting. The current, narrow sidewalk should be replaced with a significantly wider sidewalk, located far enough away from the curb to allow for sufficient space for street tree planting.

#### Landscaping/Street Tree Planting within Public Right-of-Way

Landscaping, which includes street tree planting, is critical to changing the character and appearance of Lawrence Avenue East. Since many existing buildings are low-rise and set back from the street, the containment of the street will be accomplished mainly by street trees, at least until properties are redeveloped. Street trees should be planted in the boulevard between the curb and the sidewalk.

#### Pedestrian Scale Street Lighting

The existing street lighting pattern is designed for automobiles, not pedestrians, and the existing light standards are spaced significantly far apart from each other. There is a need for pedestrian scale street lighting along the sidewalks, particularly in areas of high volume pedestrian traffic.

#### Banners

Banners can provide a unified identity to the streetscape. Banners can be themed and carry a range of messages during the year, including BIA logos, seasonal messages and special events, images of the history of Wexford, and the multicultural and diverse character of the area.

### Benches

Benches are an important component of making the area pedestrian friendly. Benches should be provided at key locations and transit stops.

### Information Kiosks

Information kiosks are useful for pedestrian way finding, maps of local business and institutions, information on the history, natural and cultural heritage of the area and the network of pedestrian trails.

### Bicycle Racks/Recycling bins

Bicycle racks should be provided near transit stops, street intersections and strip plazas. Recycling and trash bins should also be located in these areas, and elsewhere as required.

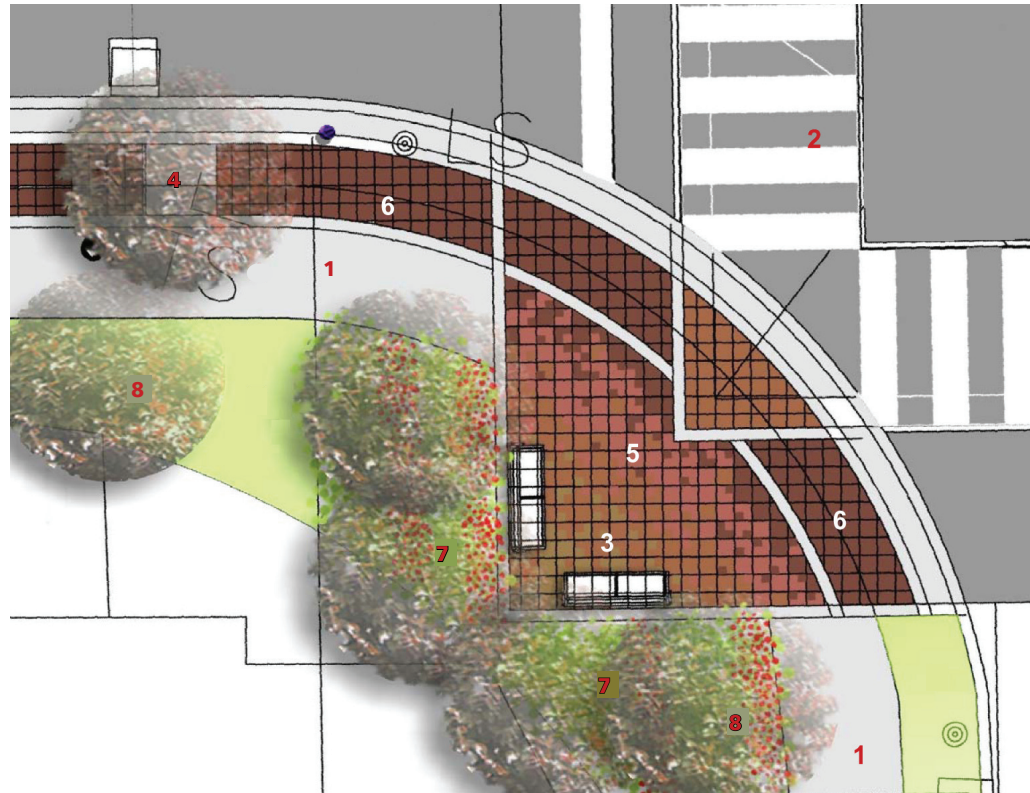


Figure 7.1: Selected Images of Coordinated Street Furniture

(Source: [www.toronto.ca/involved/projects/streetfurniture/pdf/proposals/astral\\_media\\_outdoor\\_lp.pdf](http://www.toronto.ca/involved/projects/streetfurniture/pdf/proposals/astral_media_outdoor_lp.pdf))

LEGEND

- 1. Wide Sidewalk @ 2 m. Minimum
- 2. Enhanced Pedestrian Crosswalk
- 3. Seating Node with Benches, Kiosks, Media Boxes etc.
- 4. Flowering Tree in Trench
- 5. Specialty Paving
- 6. Preferred Furnishing/Planting Zone
- 7. Mass Planting of Shrubs under Trees
- 8. Flowering Tree in Turf Area of Planting Bed



PLAN

**7.1.2 Special Treatment at Major Intersections**

There are several key locations and major intersections along Lawrence Avenue East at Victoria Park, Pharmacy Avenue, Warden Avenue and Birchmount Road, which are signalized, and include transit stops. These intersections should be designed to be more pedestrian friendly and offer a place of rest while waiting for transit or waiting to cross the street. Figure 7.2 Intersection Treatment illustrates a typical treatment of an intersection.

Above: Detail Plan for Major Intersections

(Based on Streetscape Study by EDA)

Bottom: Key Map - Streetscape Master Plan

(Provided by EDA)



KEY PLAN Figure 7.2: Typical Treatment of Major Intersections, N.T.S.



### 7.1.3 Landscaped Median

As described in Section 6.4, landscaped medians can act as traffic calming devices as well as areas of pedestrian refuge. They also provide opportunities for signage and public art. Landscaped medians should be located at signalized intersections, stretches of road that do not require a centre left-turn lane, at the Hydro corridor and at locations such as Elinor Avenue as this is a preferred location for a traffic signal. Figure 7.3 Street Section within shows an example of landscaped median and shows a typical street section.

All landscaped medians should consider native plant materials that require minimal irrigation. Medians should be a minimum of 3 metres in width, contain a

soil trench, be mechanically irrigated and include a budget for their operation and maintenance.

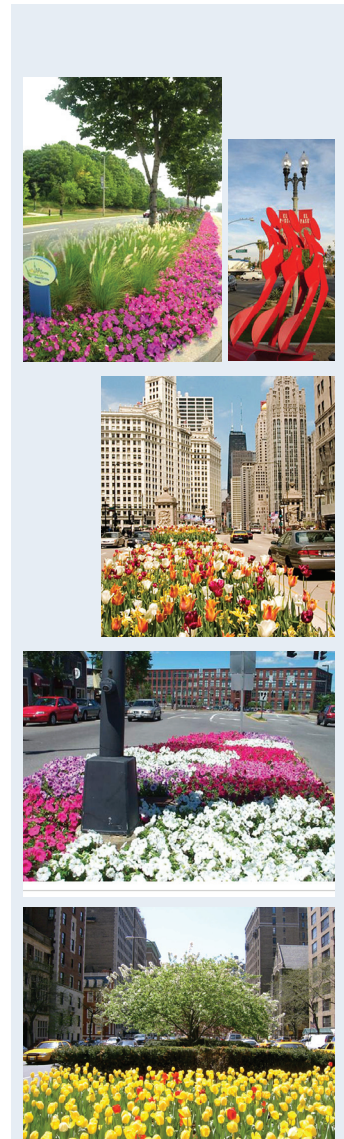
Landscaped medians at major intersections (see bottom portion of Figure 7.2) should be increased in number over time, as driveway consolidations occur along the Lawrence Avenue East frontage.

### 7.1.4 Extend Streetscape Elements Along Side Streets (North and South of Lawrence Avenue)

Streetscape elements should be extended from Lawrence Avenue East along the major north-south streets such as Victoria Park, Pharmacy, Warden and Birchmount, as well as the residential north-south side streets, in order to encourage pedestrian connections to the retail and other uses along Lawrence Avenue East (see Figure 7.4).



Figure 7.3: Typical Street Section with a Landscaped Median, N.T.S.



Photos: Landscaped Median Examples

### 7.1.5 Private Realm Improvements: Landscaping

Most retail establishments along Lawrence Avenue have front yard parking that extends to the property line and, in some locations, encroaches into the public right-of-way. Often such encroachments compromise the attractiveness of the public realm. Where such encroachments occur, the City should actively seek to require those businesses to refrain from encroaching into the public right-of-way. The City should also use its powers under property standards to improve these areas.

### 7.1.6 Public Realm Improvements: Landscaping

The City should also encourage property owners to incorporate landscaping along the property line between the parking lots and the public sidewalk. Landscaping in these areas should include decorative and seasonal elements such as hanging flower baskets. These

#### LEGEND

-  Potential Redevelopment
-  Existing Buildings
-  Extended Landscape

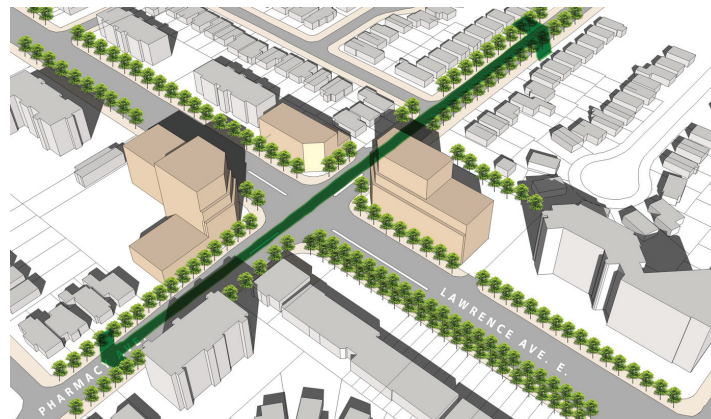


Figure 7.4: Extended Streetscape Elements Along Side Streets

elements should be coordinated through the local BIA. These recommendations are illustrated in Figure 7.5.

### 7.1.7 Streetscape Improvements: Summary of Recommendations

It is recommended that the following streetscape improvements be implemented in the Study Area: (refer also to figure 7.3 Typical Street Section)

1. Minimum 2.0 metre wide sidewalks;
2. Minimum of 2.5 metres of boulevard strip between curb and sidewalk to contain street trees and street furniture;
3. Street tree planting in continuous soil trenches of sufficient width and depth, as required by the City's Urban Forestry Department. Street tree trenches should be long enough to contain at least two trees. The surface of the tree trench should be



Photo: Existing Condition Showing Strip Mall on the South Side of Lawrence Avenue East, East of Pharmacy Avenue