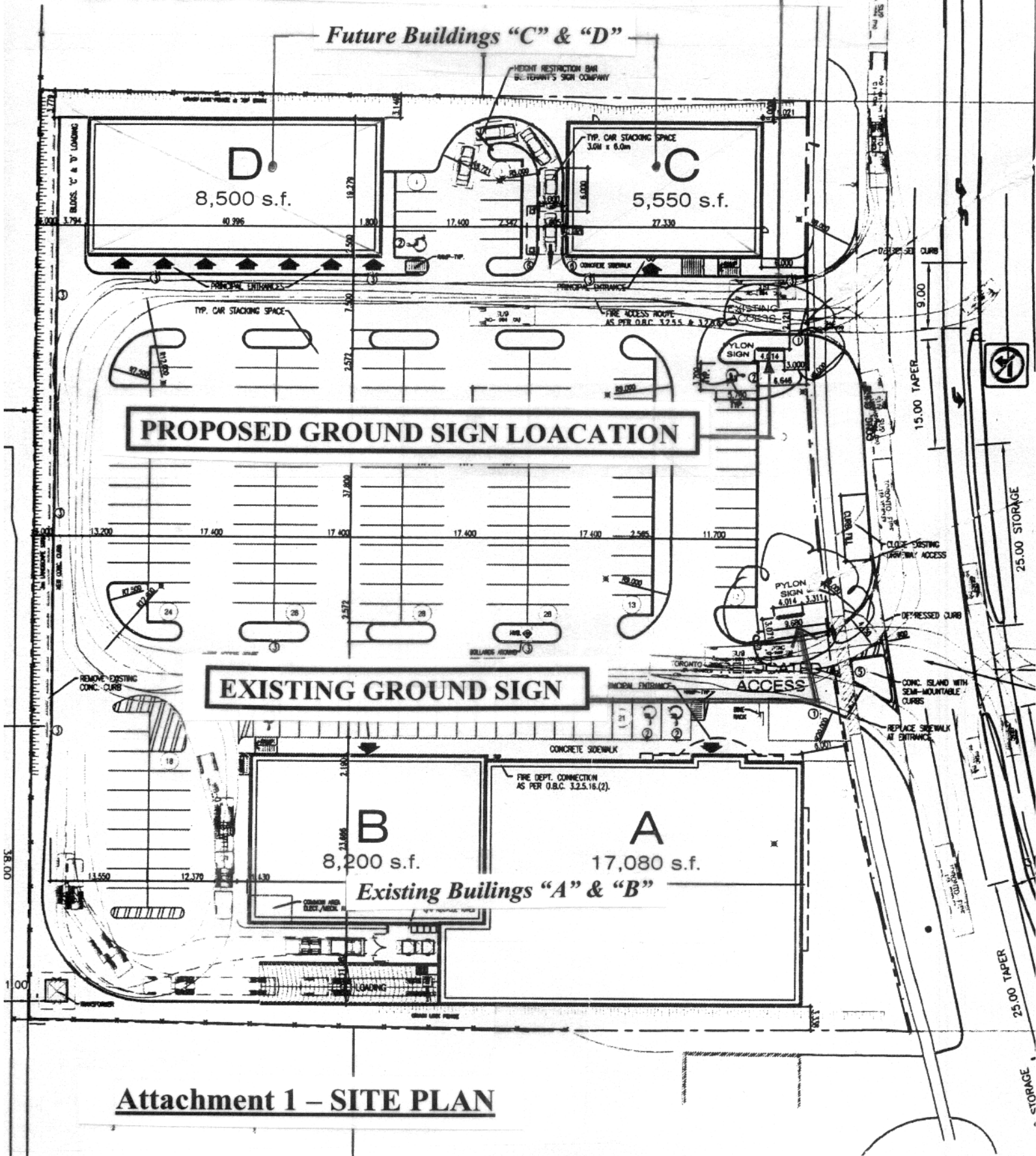


See attached enlarged part site plan for location of proposed Ground Sign



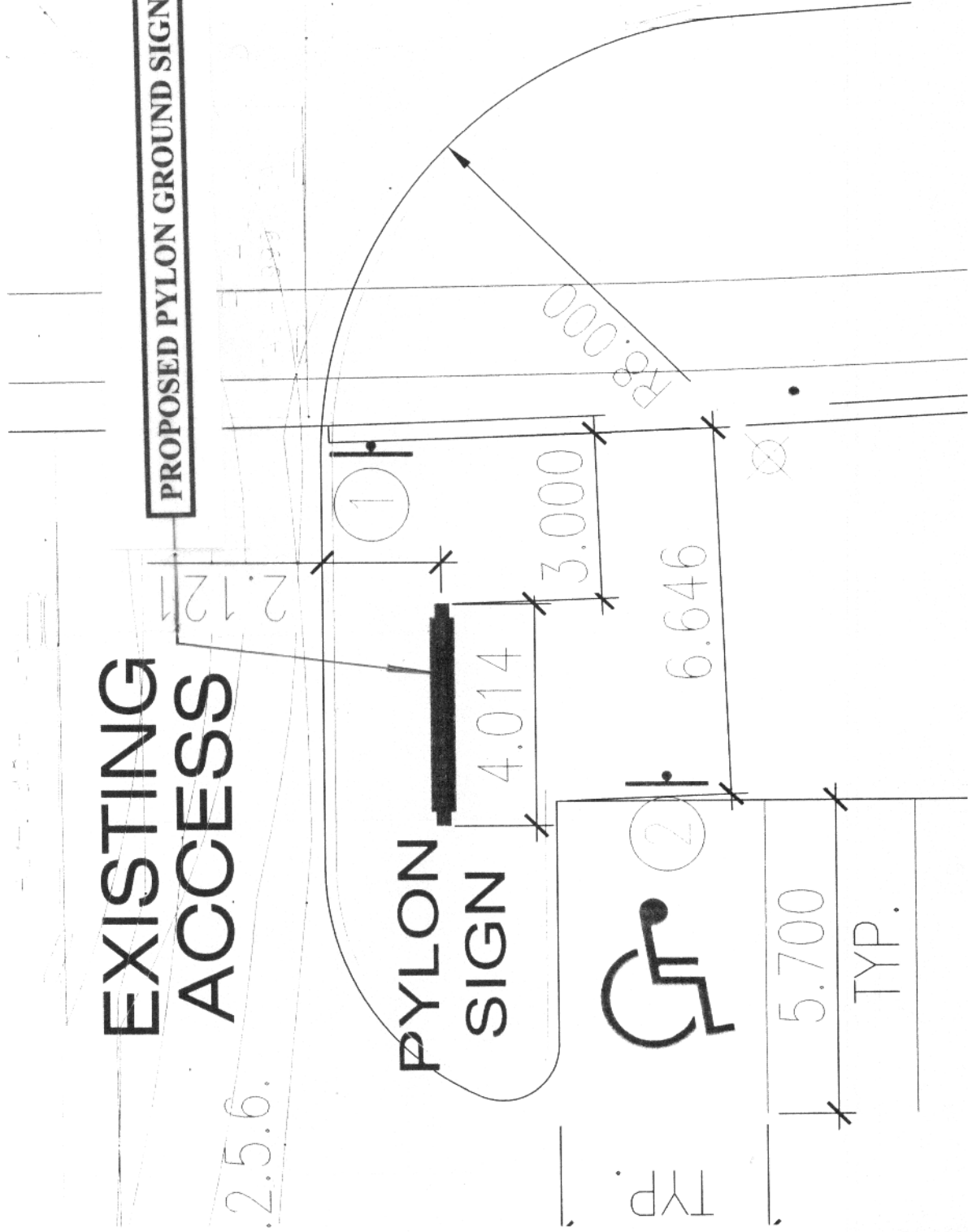
Attachment 1 – SITE PLAN

Attachment 1a – PART SITE PLAN

**EXISTING  
ACCESS**

2.5.6.

**PROPOSED PYLON GROUND SIGN LOCATION**



55-913-1114-  
07-1852

ME, MC-13-  
243-244-347-  
913-991-  
-1054

134  
202  
441



HC-800-913-991-1054-1877

**THE SUBJECT PROPERTY**

HC-355-913-1111-2216

HC-355-913-991

ST-43-116-240-307-521

ST-37-128-129-307-521

S-39-125-232-307-521-607

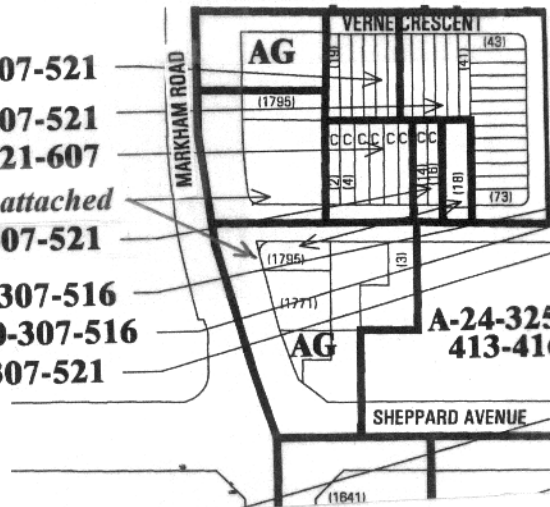
See By-law Amendment attached

SD-70-125-232-307-521

ST-13-125-228-307-516

ST-71-153-260-307-516

S-44-125-232-307-521



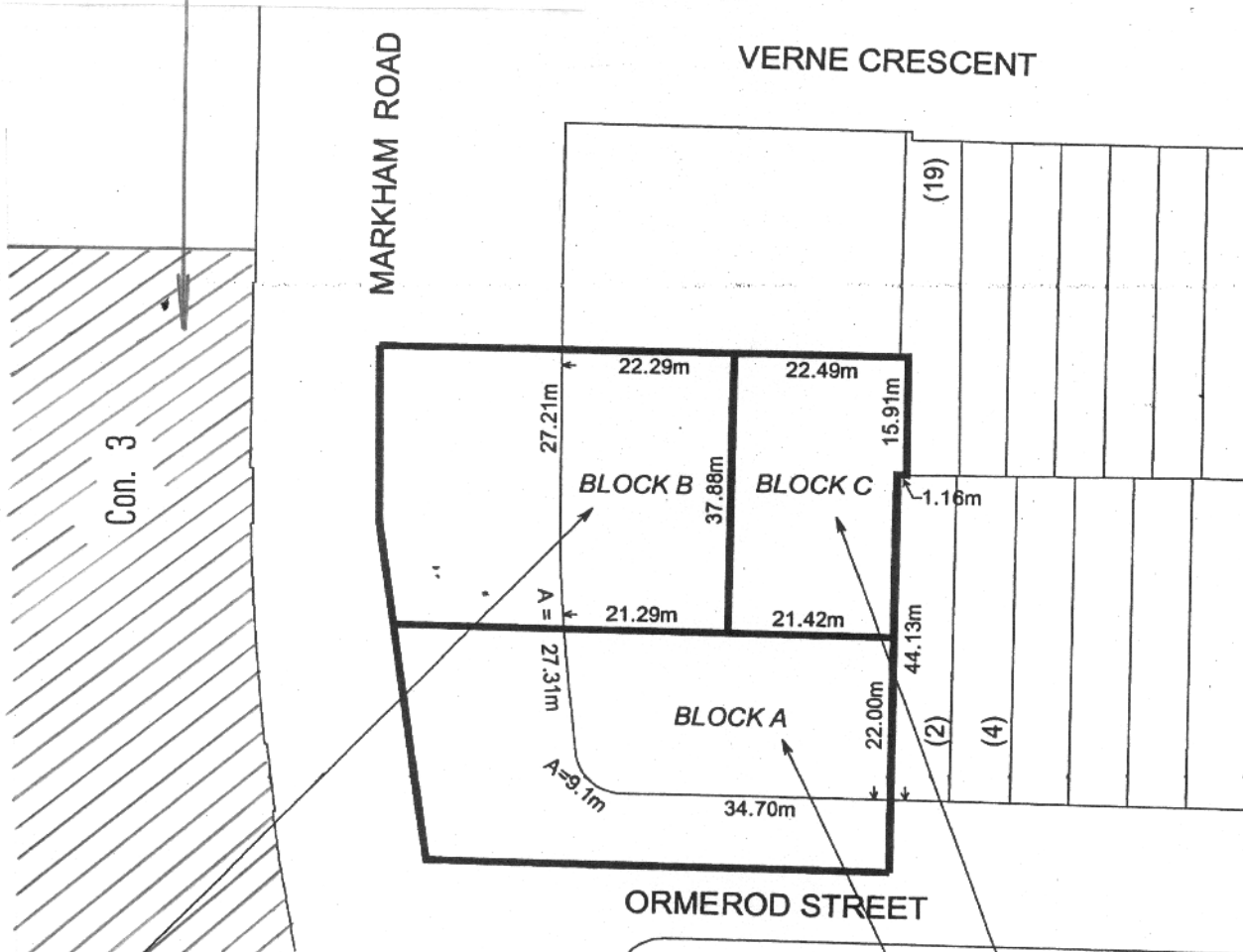
A-24-325  
413-416

**Attachment 2 – ZONING MAP**

Schedule '1'

Lot 18

THE SUBJECT PROPERTY



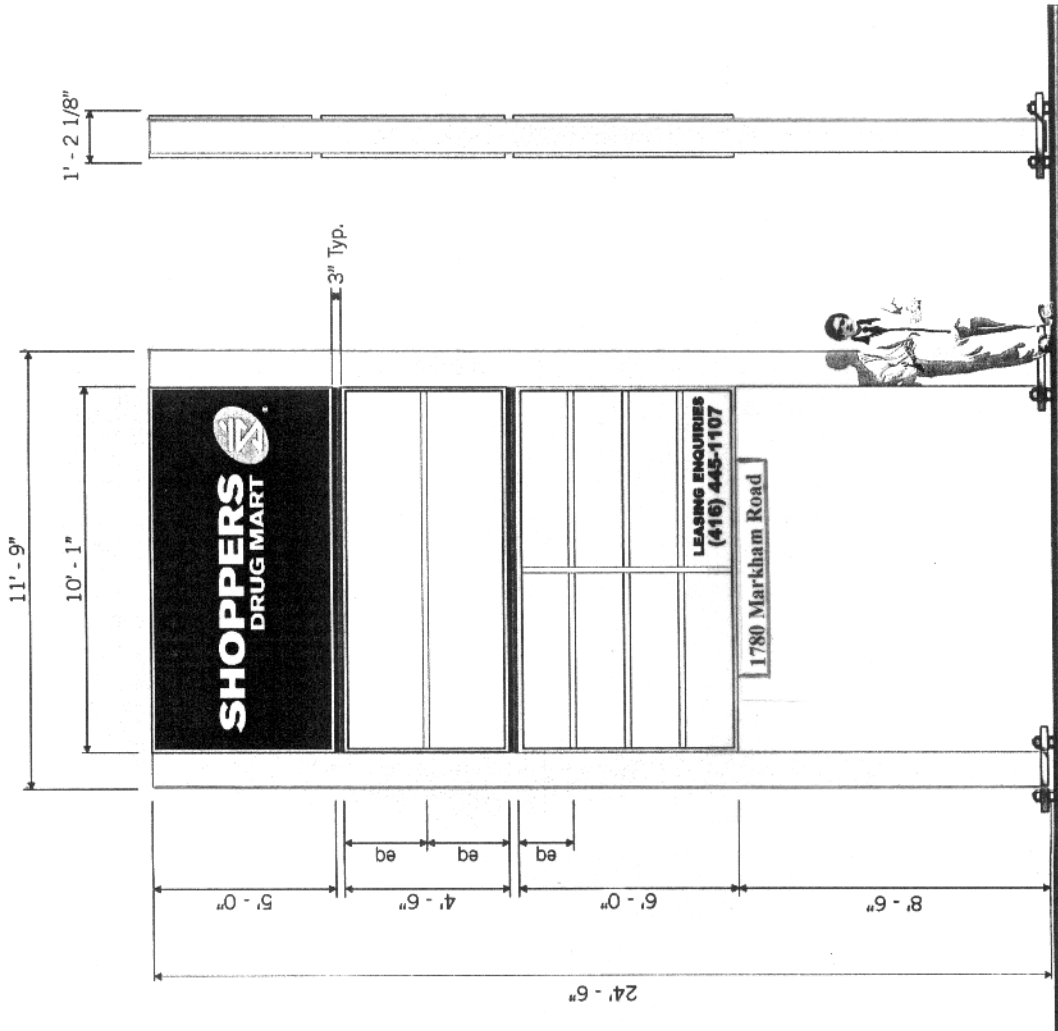
- MF-442-443-495-558-801-902-903
- MF-442-443-495-496-558-801-902-903
- MF-442-443-444-495-496-558-801-902-903

**Toronto** City Planning Division  
**Zoning By-Law Amendment**

1795 Markham Road  
 File # 06-154973 OZ

 Area Affected By This By-Law

Malvern Community By-law  
 Not to Scale  
 5/11/07



**Material Specifications**

- Aluminum constructed double wide filler and retainers painted Spraylat Brushed Aluminum
- 3/16", white acrylic faces
- T12 illumination

**Colours:**

- Shoppers Drug Mart
- Logo to have a white image on a light blue 3m 3632-7788 field
- "Shoppers Drug Mart" and registration mark to be white on a red 3m 3630-33 background
- Leasing info to be black 3m #3630-22
- Aluminum constructed reveals to be painted Spraylat Brushed Aluminum
- 10" x 10" H.S.S posts to be painted Spraylat Brushed Aluminum
- 9" x 6' - 0" address panel to be painted Spraylat Brushed Aluminum with black 3m #3630-22 text applied to both surfaces

**Attachment 3 – GROUND SIGN DETAILS**



PRIDE SIGNS.  
THIS MATERIAL IS THE PROPERTY OF PRIDE SIGNS LIMITED AND MAY NOT BE USED IN WHOLE OR IN PART WITHOUT WRITTEN CONSENT FROM PRIDE SIGNS LIMITED. ©2006



280 HOLIDAY INN DRIVE CAMBRIDGE ONTARIO CANADA TEL: 519.220.0905 FAX: 519.220.0606 WWW.PRICESIGNS.COM

1780 Markham Road  
Toronto, Ontario

**GOLDMANCO**

DRAWN BY: J. Lewis  
DATE: Feb. 8, 2008