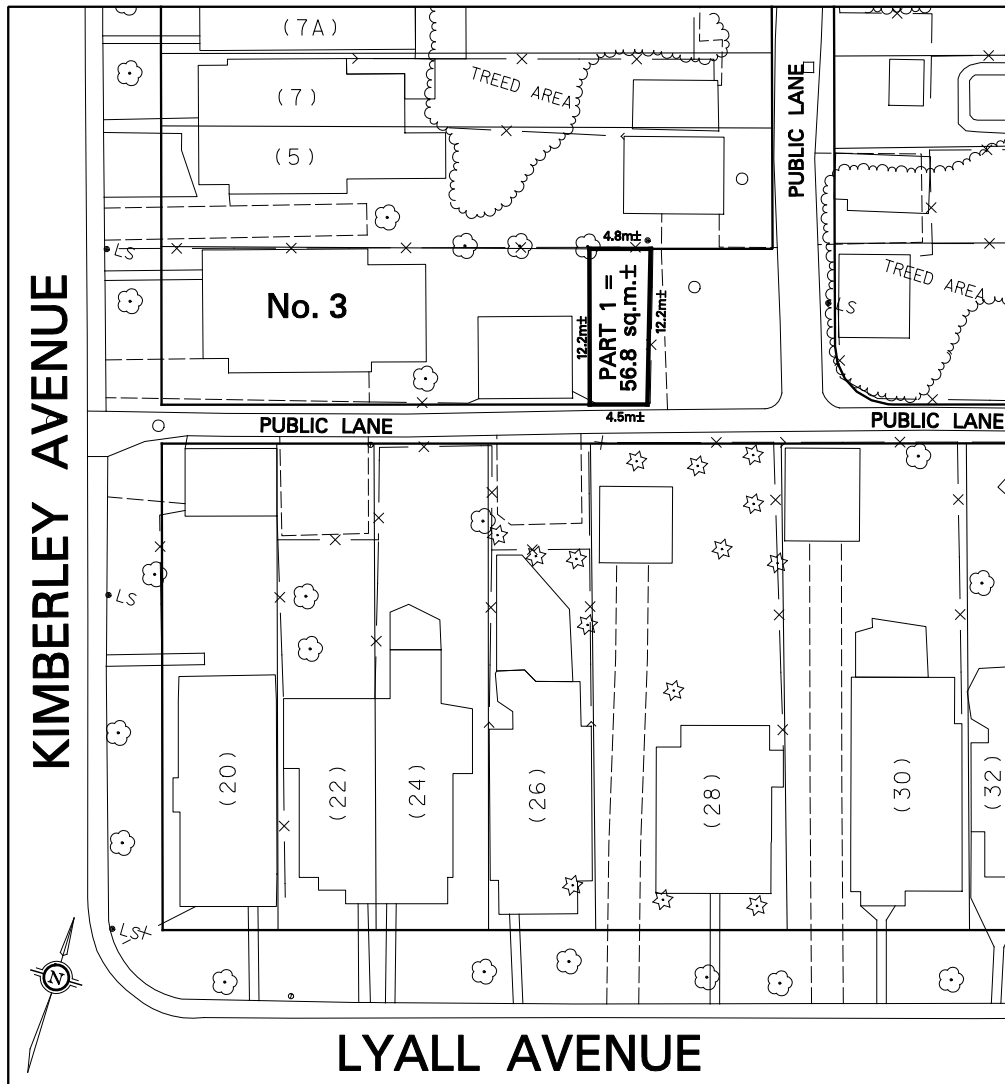
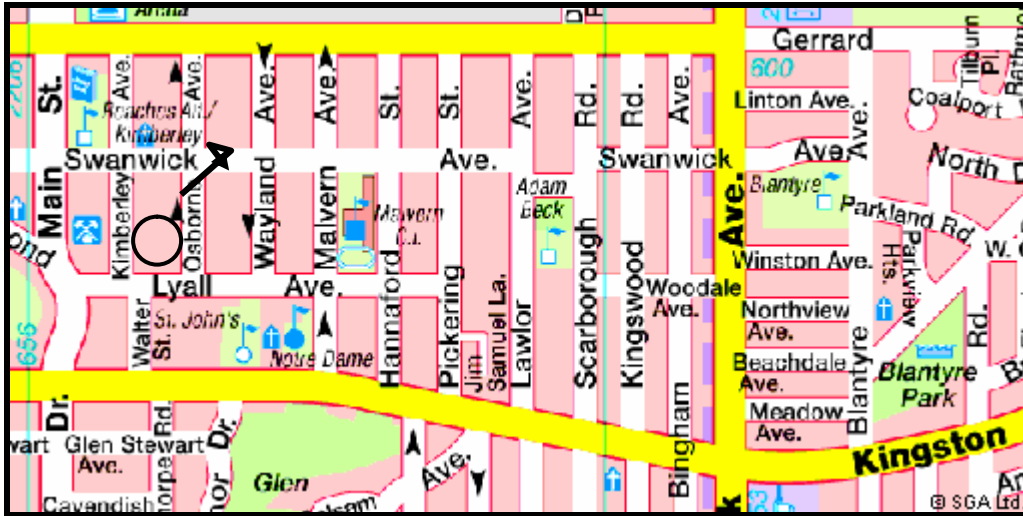



Appendix "B"



 TECHNICAL SERVICES DIVISION SURVEY & MAPPING SERVICES	PROPERTY INFORMATION SHEET	
	CITY OWNED LAND PROPOSED CLOSURE AND SALE OF A PORTION OF THE PUBLIC LANE ABUTTING No. 3 KIMBERLEY AVENUE	
NOTE: THIS SKETCH HAS BEEN COMPILED FROM OFFICE RECORDS.	WARD 32 - BEACHES-EAST YORK DATE: SEPT. 7, 2007	SKETCH No. PS-2007-218
NOT TO SCALE		