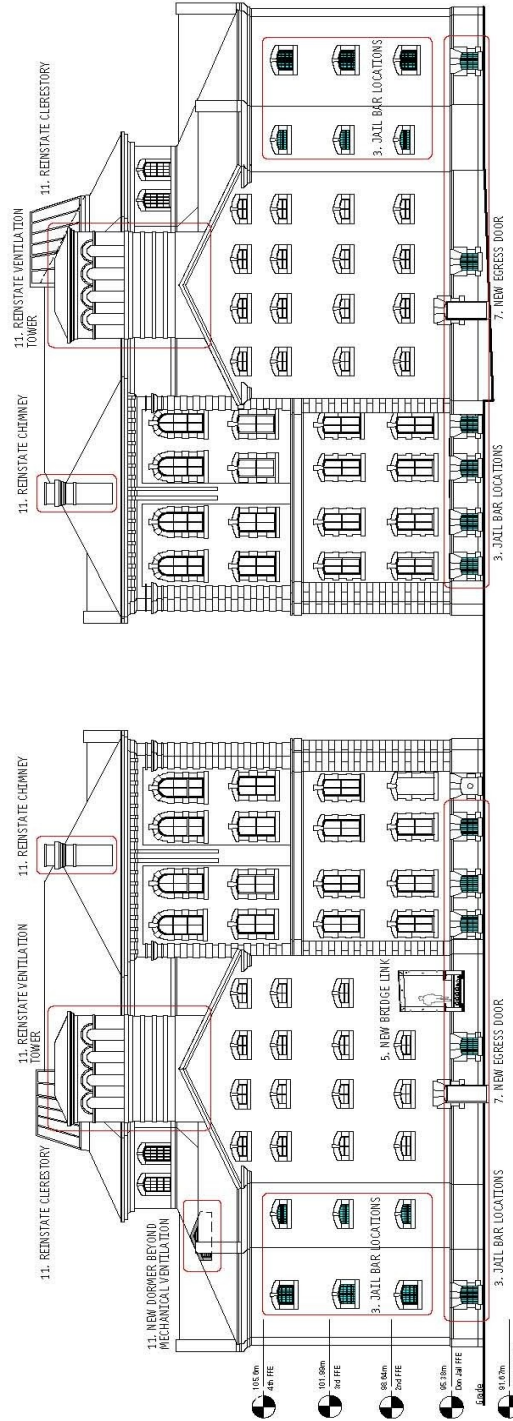


550 GERRARD STREET EAST (OLD DON JAIL)  
Proposed Location for Reinstatement of Bars

ATTACHMENT NO. 3c



22. REPAIR AND CLEAN MASONRY WALLS

10. REPAIR EXISTING AND RESTORE MISSING WINDOWS

<p><b>The Don Jail</b> <b>East and West Elevations</b></p> <p>This drawing is the property of E.L.A. Architects Inc. and shall remain their confidential information. The Contractor shall verify all levels and dimensions on existing work. Do not scale the drawings. Use E-mail if there are any questions. The Contractor shall be responsible for any change orders. This drawing complies with the AIA Code of Ethics.</p>	<p>Scale: NTS</p> <p>Drawn by: AP</p> <p>Checked by: AP</p> <p>Project No.: 02-099-01</p>
	<p>10 St. Mary St., Suite 801 Toronto, Canada M4Y 1P9 416 363 4697 T 416 363 8761 F</p> <p>Architect: E.L.A. Architects Inc.</p> <p>Date: 08 Oct. 2008</p>
<p>Conservation Plan Compendium</p> <p>650 GERRARD ST. E TORONTO, ON</p> <p>Issued For: BRIDGEHEALTH</p> <p>Issued By: BRIDGEHEALTH</p>	<p>Conservation Plan Compendium</p> <p>650 GERRARD ST. E TORONTO, ON</p> <p>Issued For: BRIDGEHEALTH</p> <p>Issued By: BRIDGEHEALTH</p>