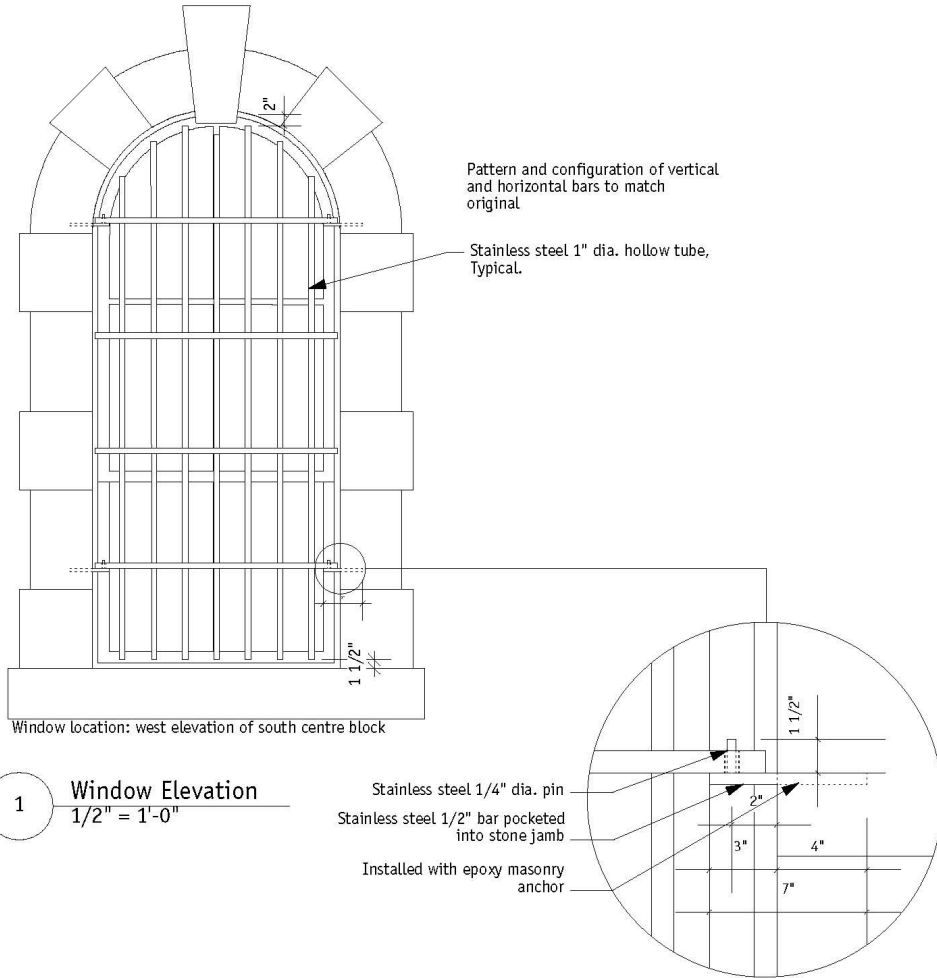


550 GERRARD STREET EAST (OLD DON JAIL)
Reinstallation Detail

ATTACHMENT NO. 6



1 Window Elevation
1/2" = 1'-0"

2 Security Bar Detail
2" = 1'-0"

Window Security Bars Demonstration of a Reinstallation		Exterior Condition Assessment		10 St. Mary St., Suite 801 Toronto, Canada, M4Y 1P9 416 963.4497 T 416 963.8761 F		E.R.A.	
<small>This drawing is the property of E.R.A Architect Inc. and may not be used or reproduced without expressed approval.</small>		<small>No.</small> 01	<small>Date:</small> May 2008	<small>Issued For:</small> Bldg Conditon Report	<small>Scale:</small> As Shown	<small>Date:</small> 20 May 2008	SK-1
<small>The Contractor shall verify all levels and dimensions on site and report all discrepancies to E.R.A. before beginning work.</small>					<small>Drawn by:</small> RH	<small>Sheet No:</small>	
<small>Do not scale the drawings. Use figured dimensions only.</small> <small>The Contractor shall be responsible for any changes made to the drawings without E.R.A.'s approval.</small>					<small>Reviewed by:</small> AP		
				prepared for : Bridgepoint Health 14 St. Matthews Road	<small>Project No.:</small> 03-092-02		