

Agenda *for* Prosperity

Monitoring Toronto's Economy: How Are We Doing?

Response to Council Motion of Jan 27/28, 2009

*Mike Williams
GM, EDCT*

Economic Development Committee



Measuring Toronto's Economic Performance

- The Basics of Toronto's Economy
- Side Trip on Statistical Details
- Key Broad Trend Indicators
- Closer Examination of Specific Key Issues



Basics for City of Toronto

(2009 Est Data)

- Population - 2.7 Million
- Labour Force - 1.4 Million
- Emp Residents - 1.3 Million (live in Toronto)
- Jobs - 1.5 Million (work in Toronto)
- # of Businesses - 83,000
- GDP - \$140 Billion
- Inflation - 2.1 % (CMA March 08-09)

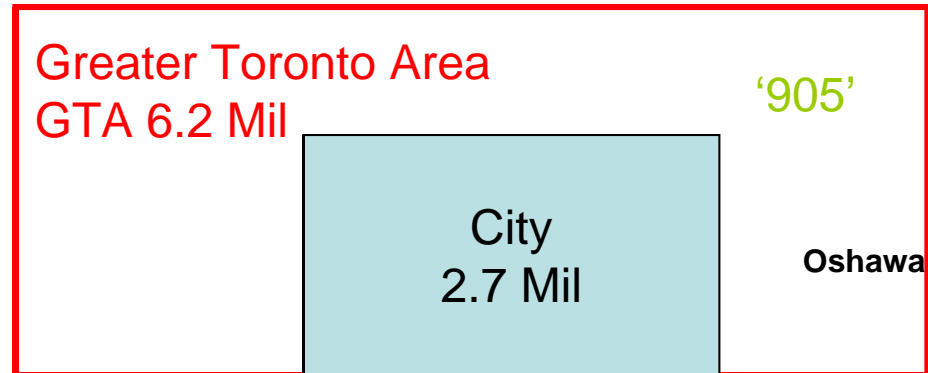


Defining 'Toronto' Geographically

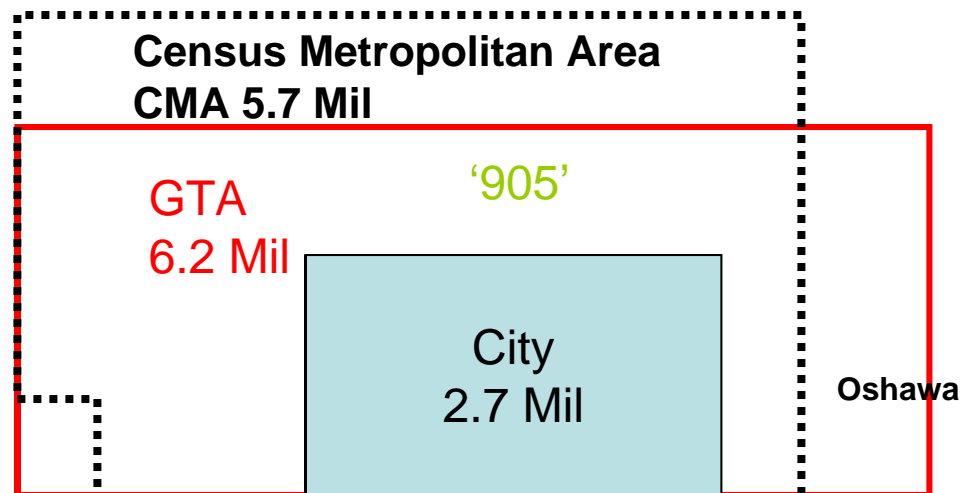
City
2.7 Mil



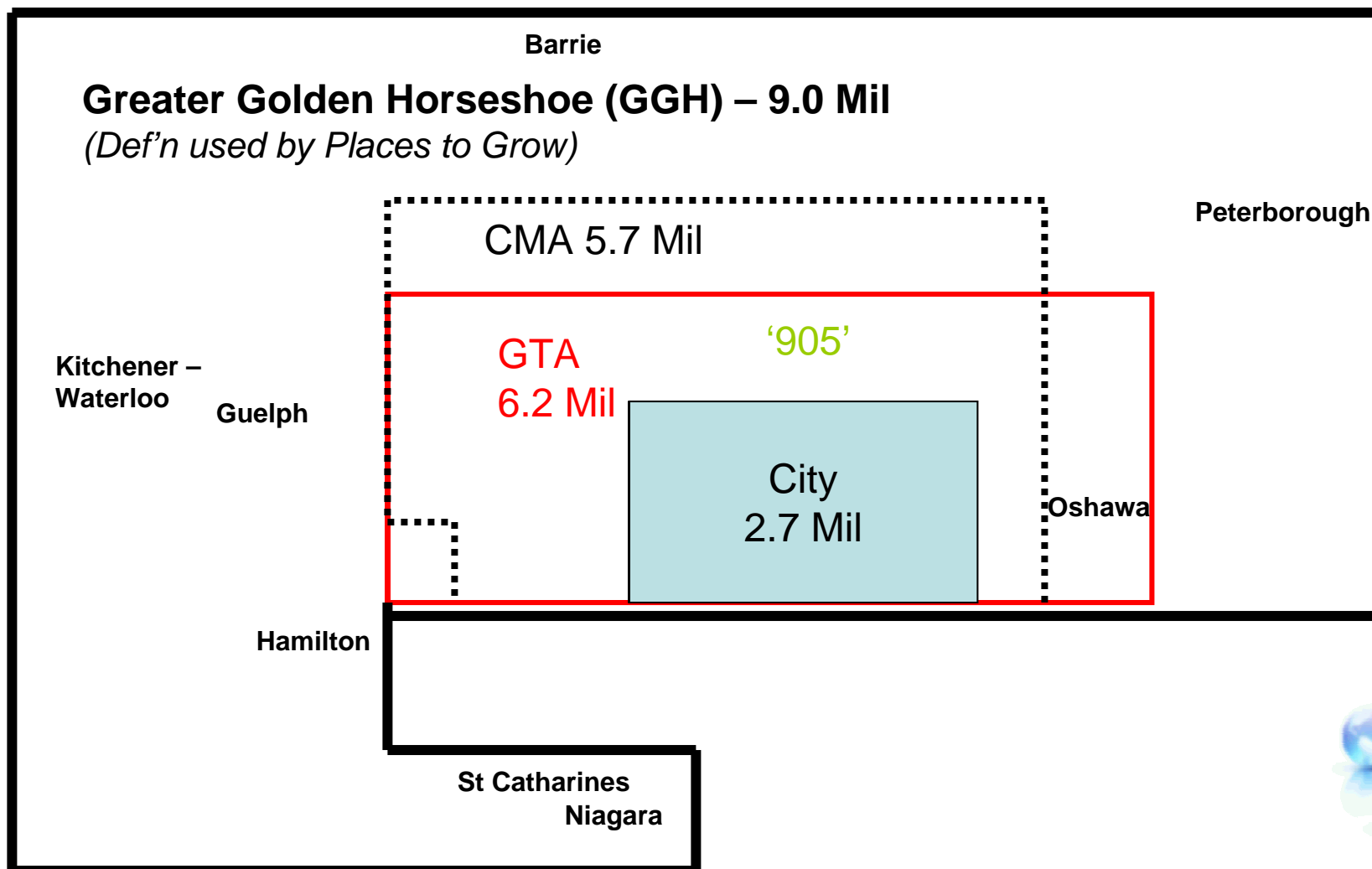
Defining 'Toronto' Geographically



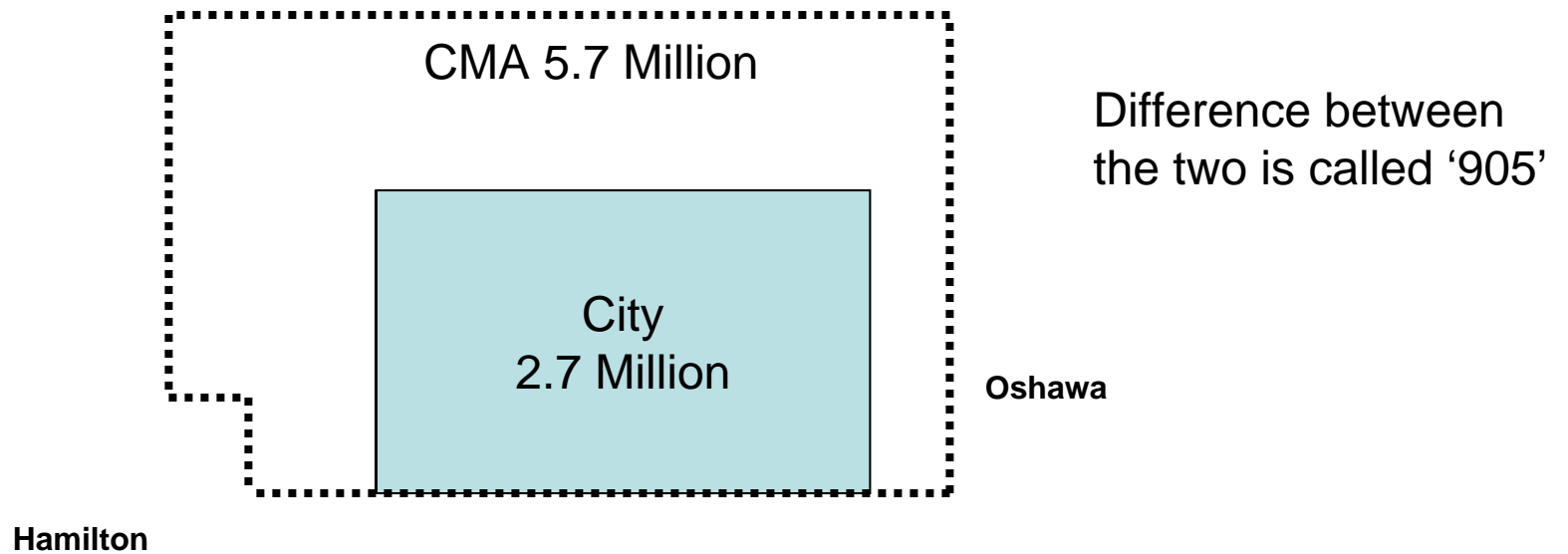
Defining 'Toronto' Geographically



Defining 'Toronto' Geographically



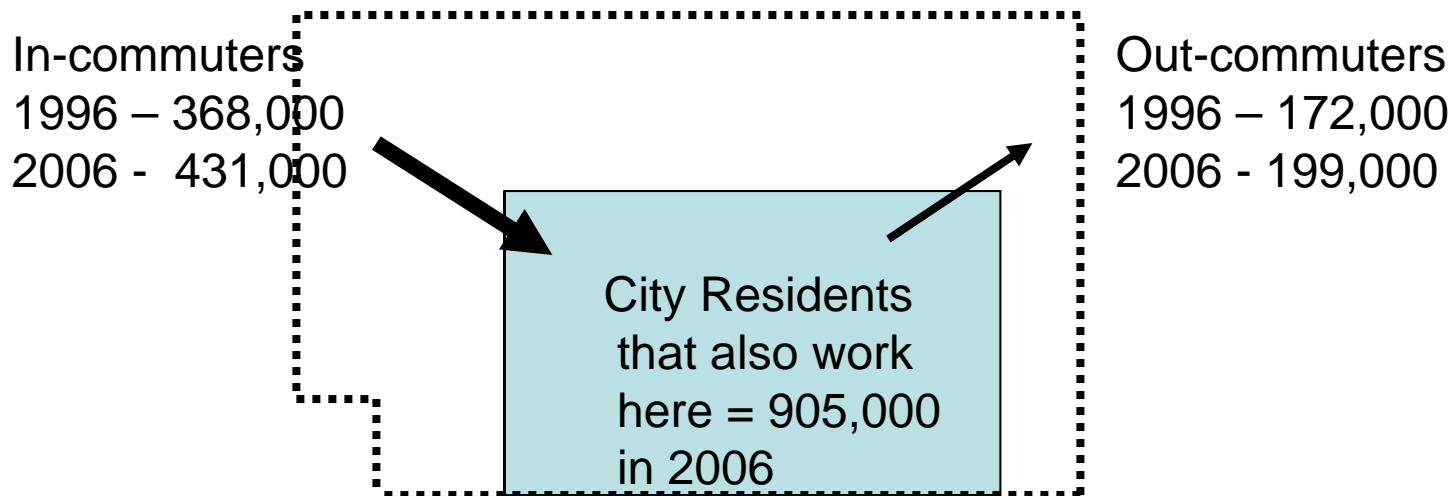
Defining 'Toronto' Statistically



More people continue to travel into the City to work compared to travel out:

196,000 in 1996

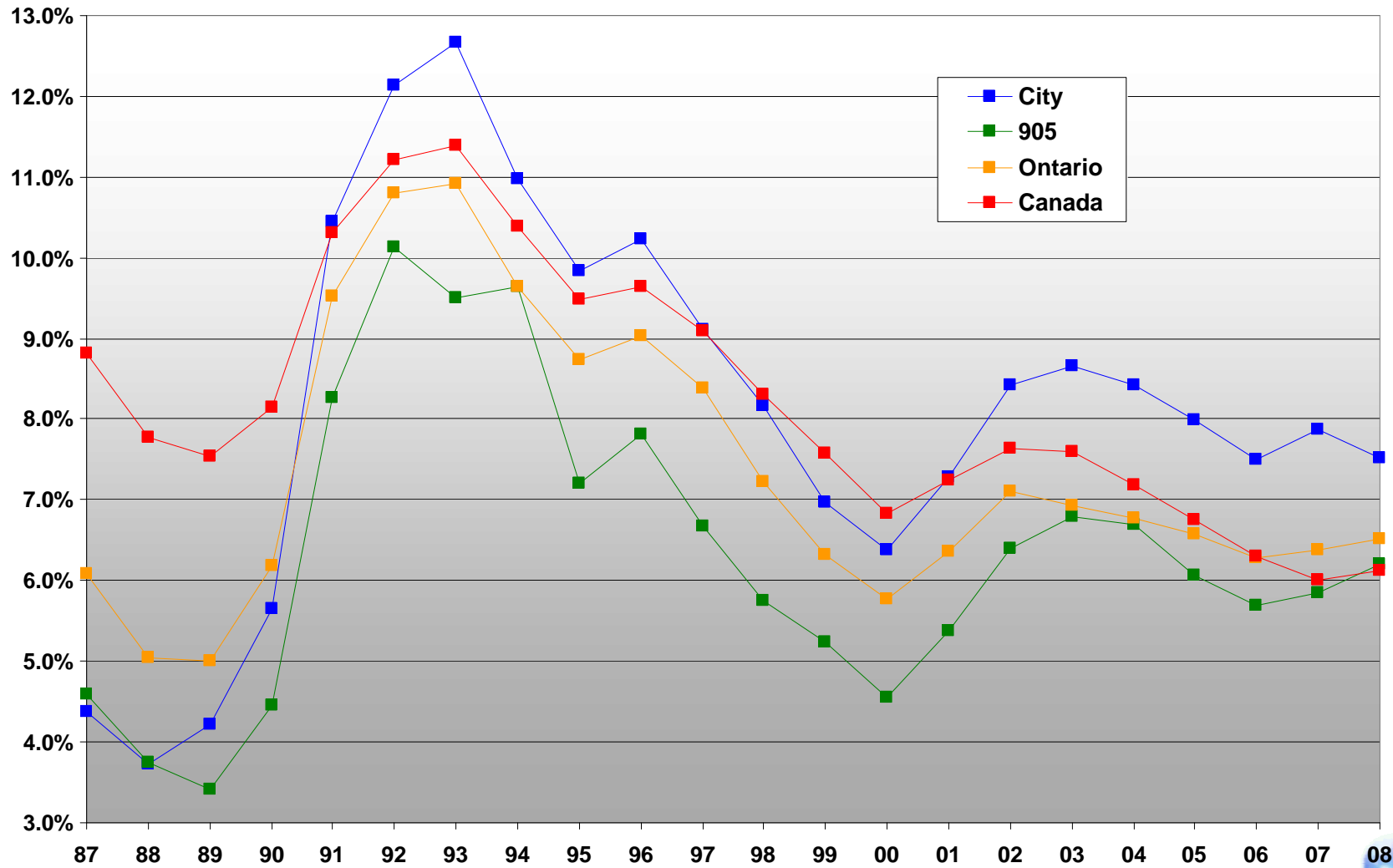
232,000 in 2006



Becoming a Bedroom Community – Not!



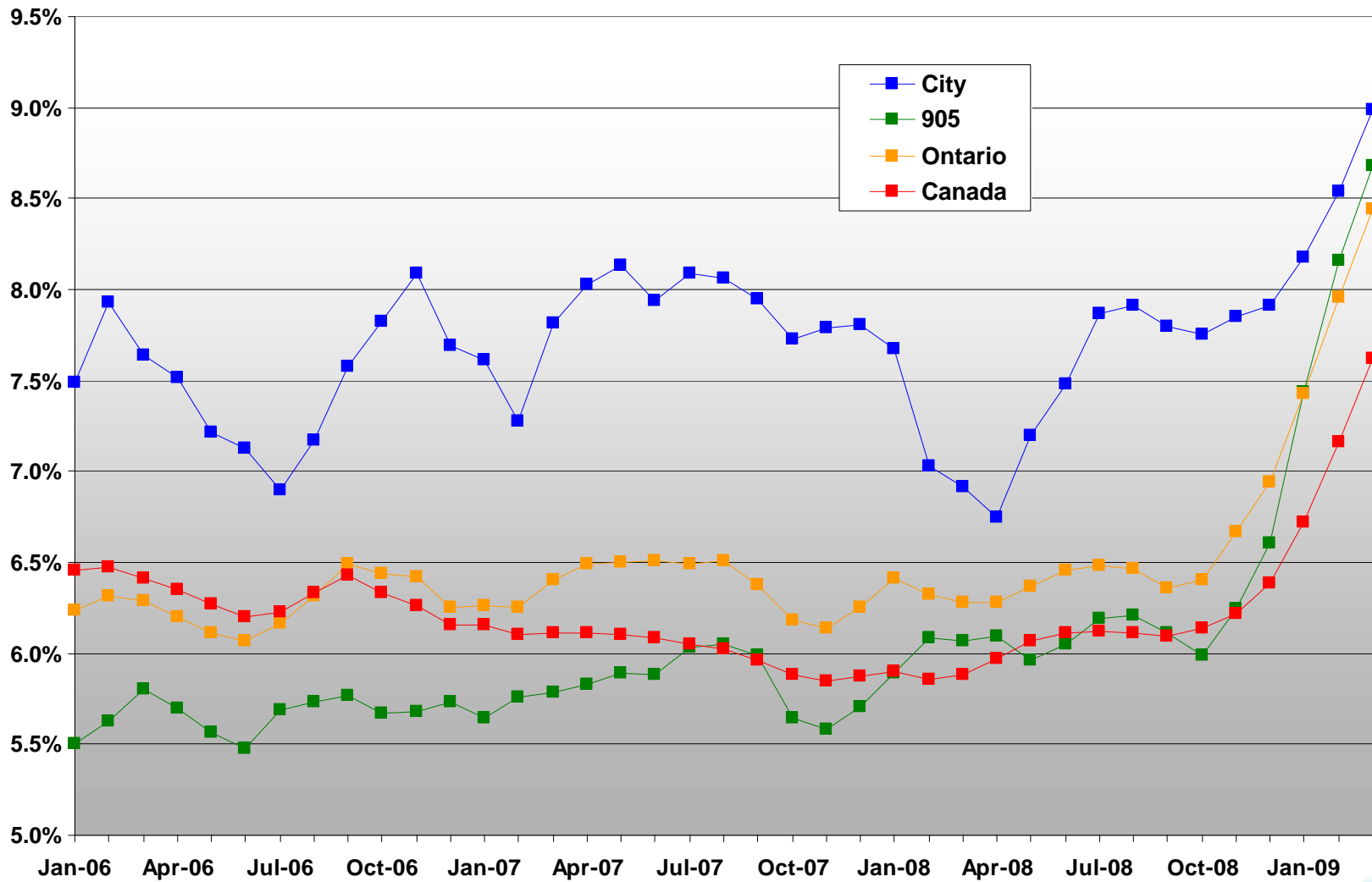
Annual Unemployment Rates



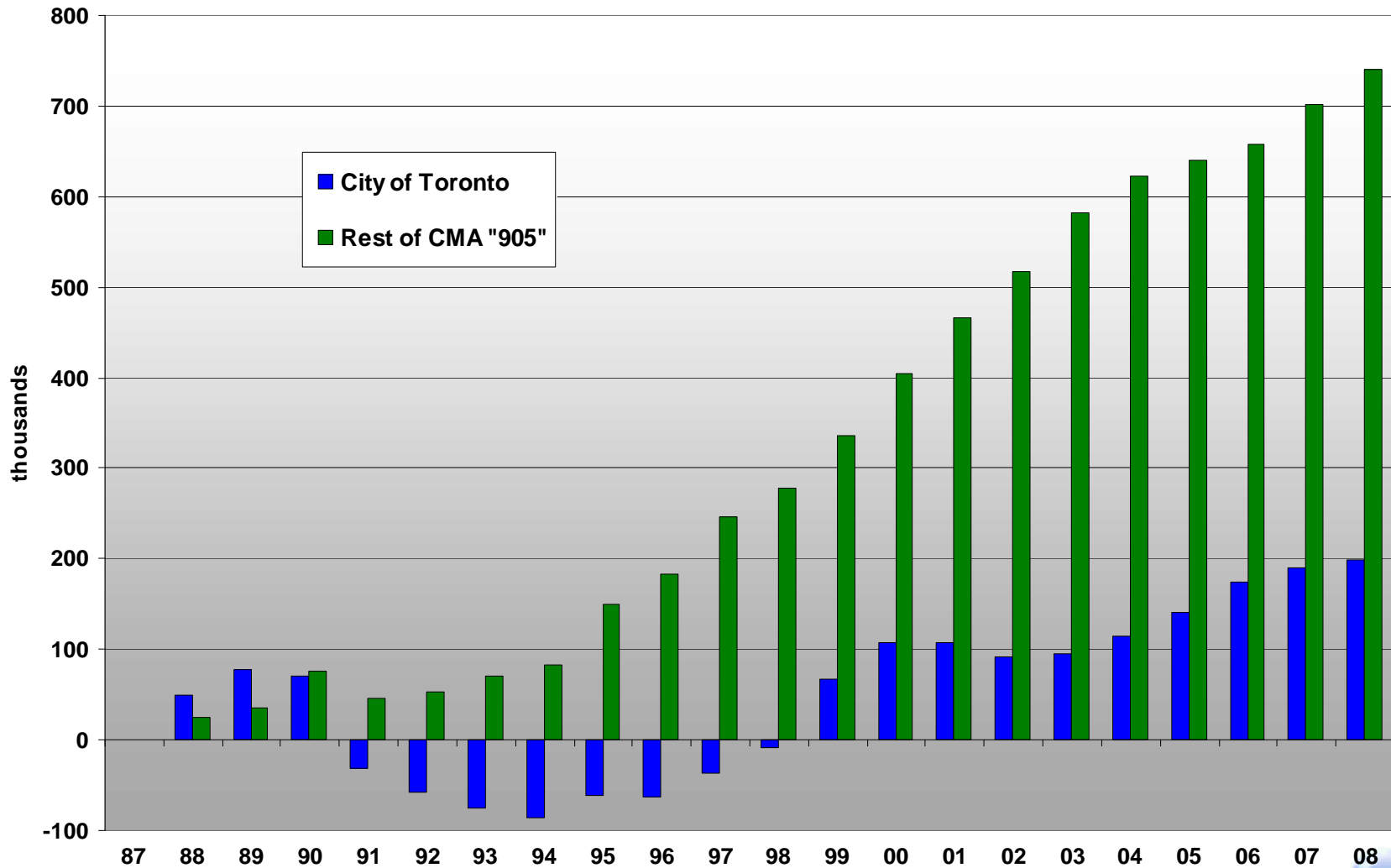
From leader to lagging



Unemployment Rates – 3 month average



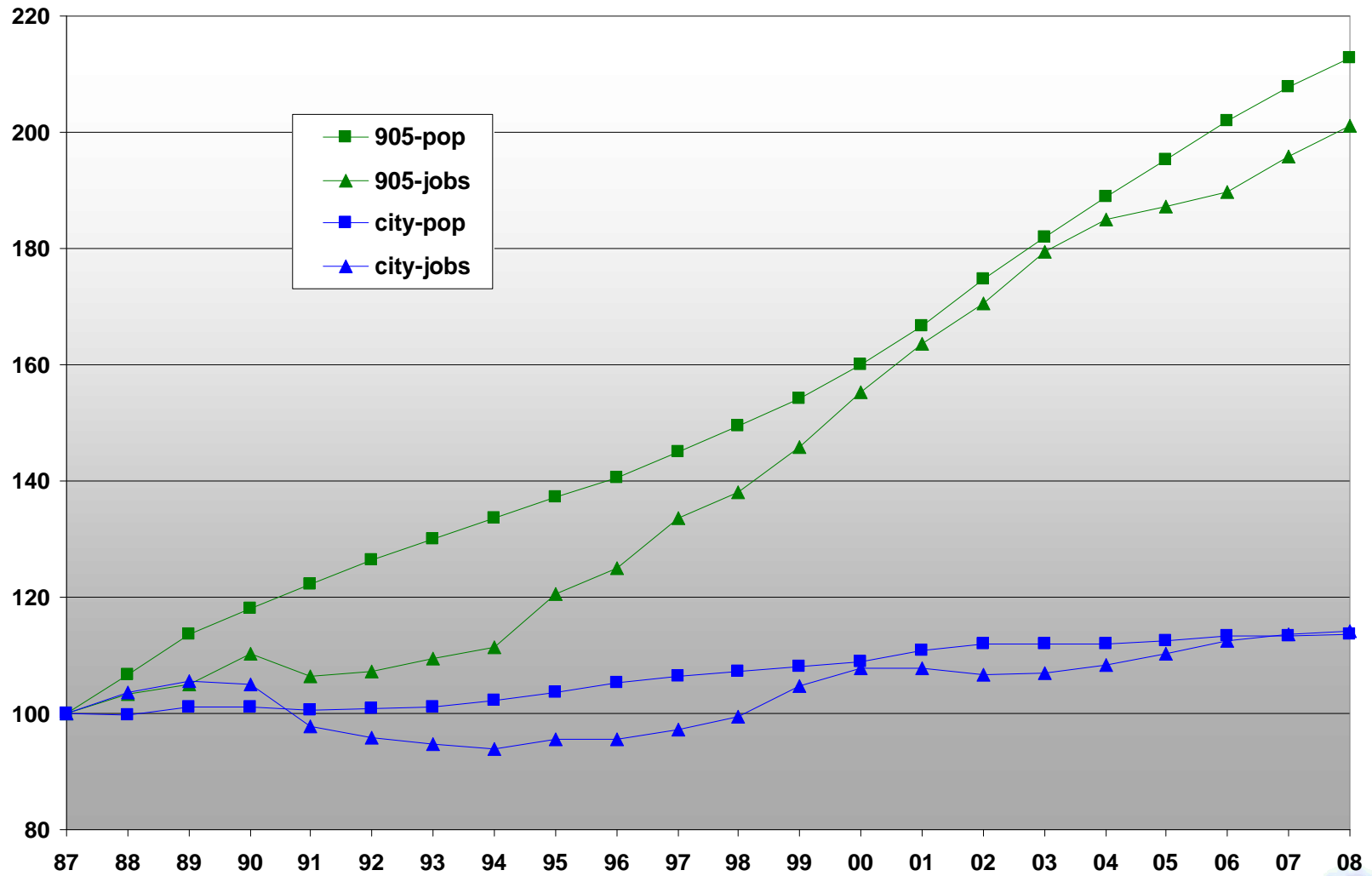
Cumulative Job Growth



Job Growth has been where the greenfields are



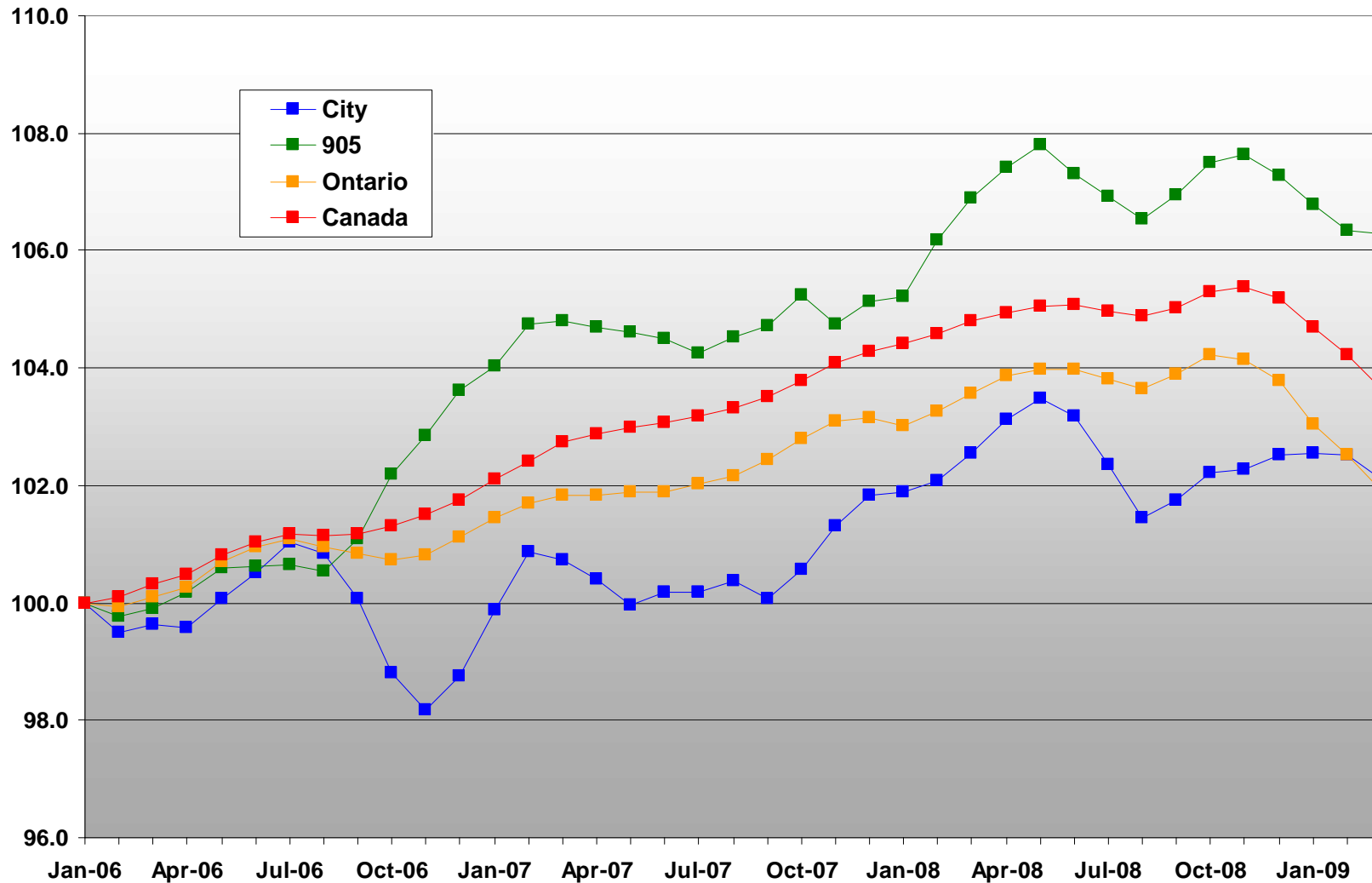
Population and Jobs - Indexed



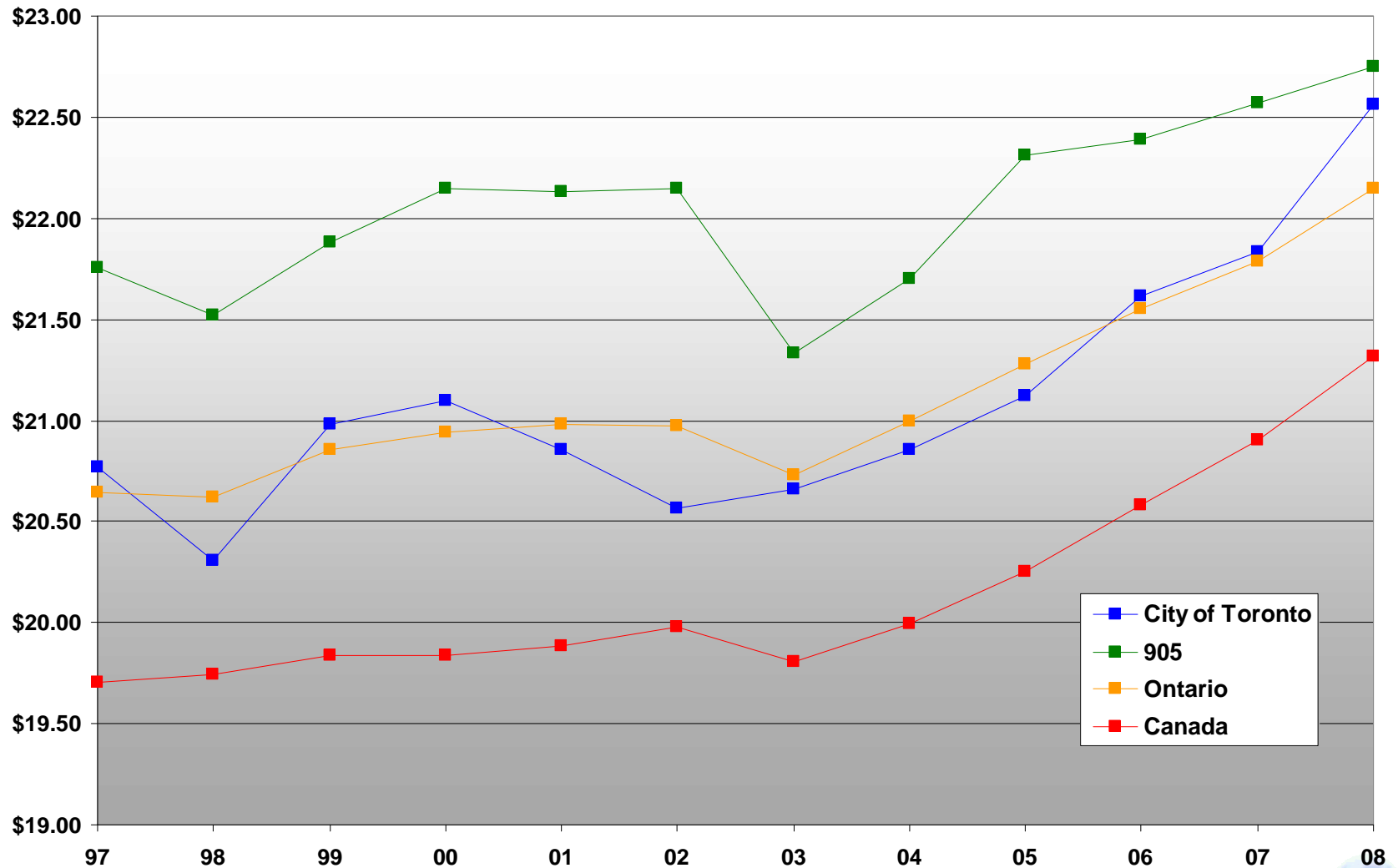
Jobs follow people



Employed – 3 Month Average - Indexed



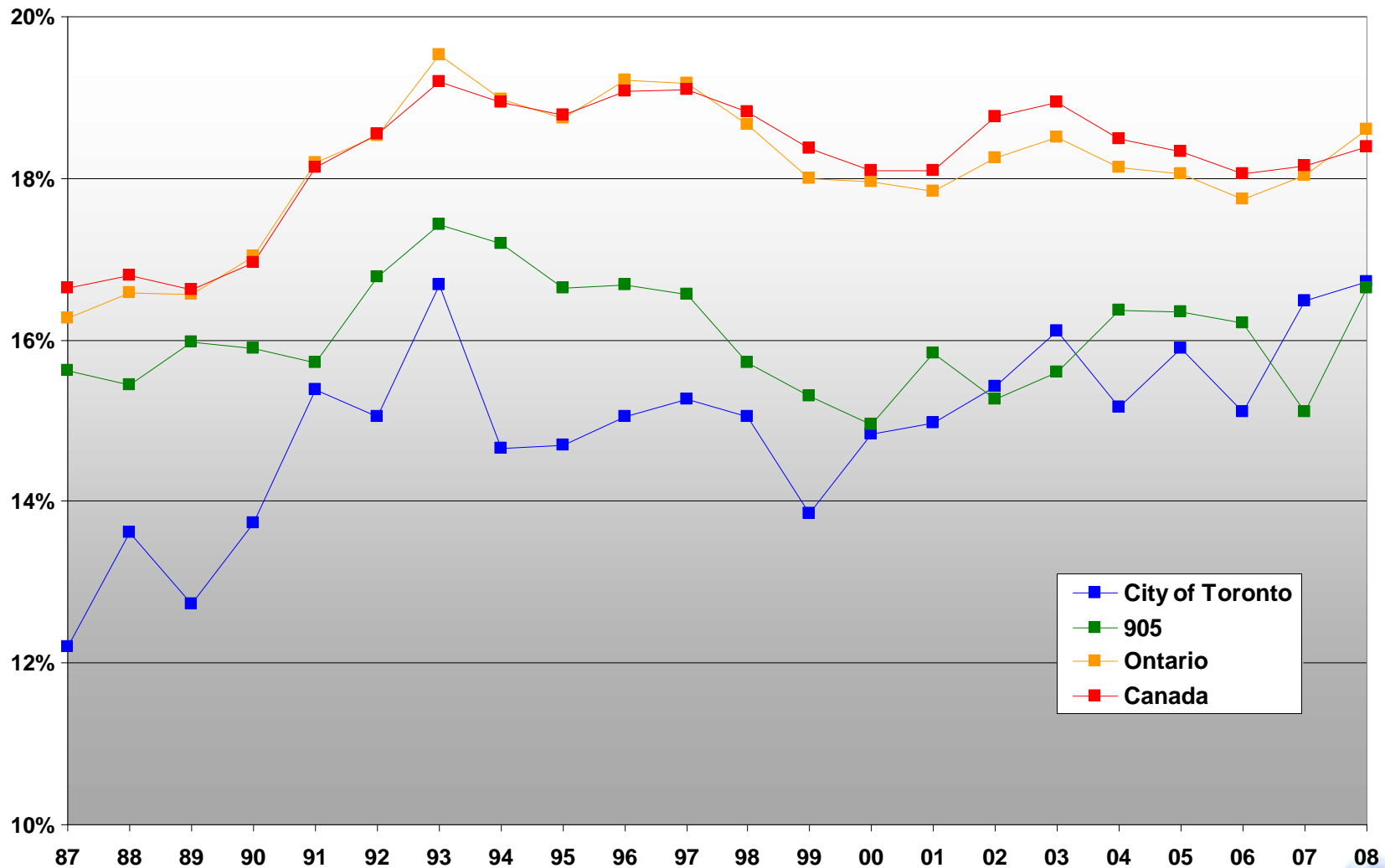
Average Hourly Wages 2008\$



Wages rates are doing relatively well



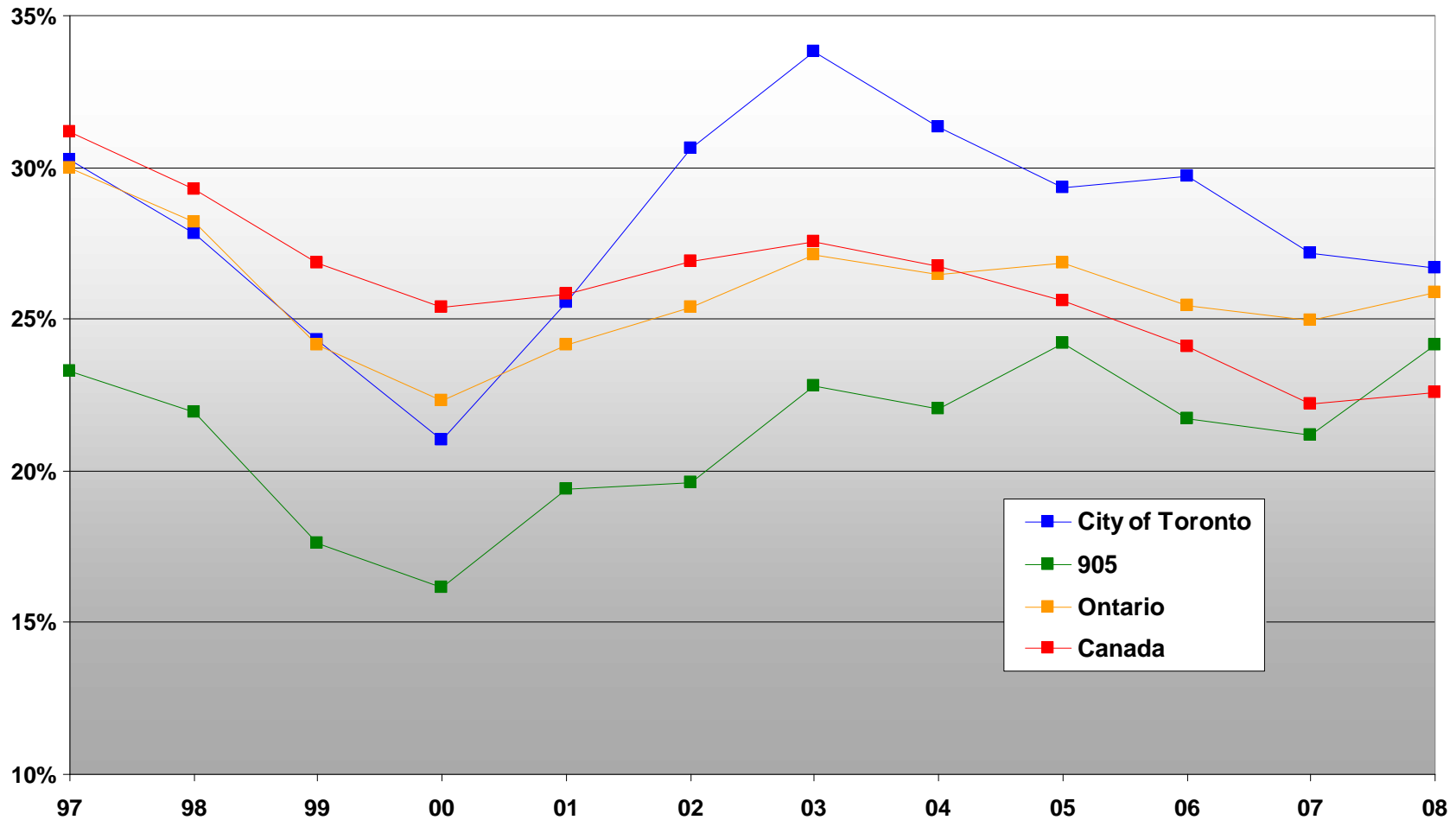
Part-time as % of Employed



16 Part-time employment about the same – expect to go higher



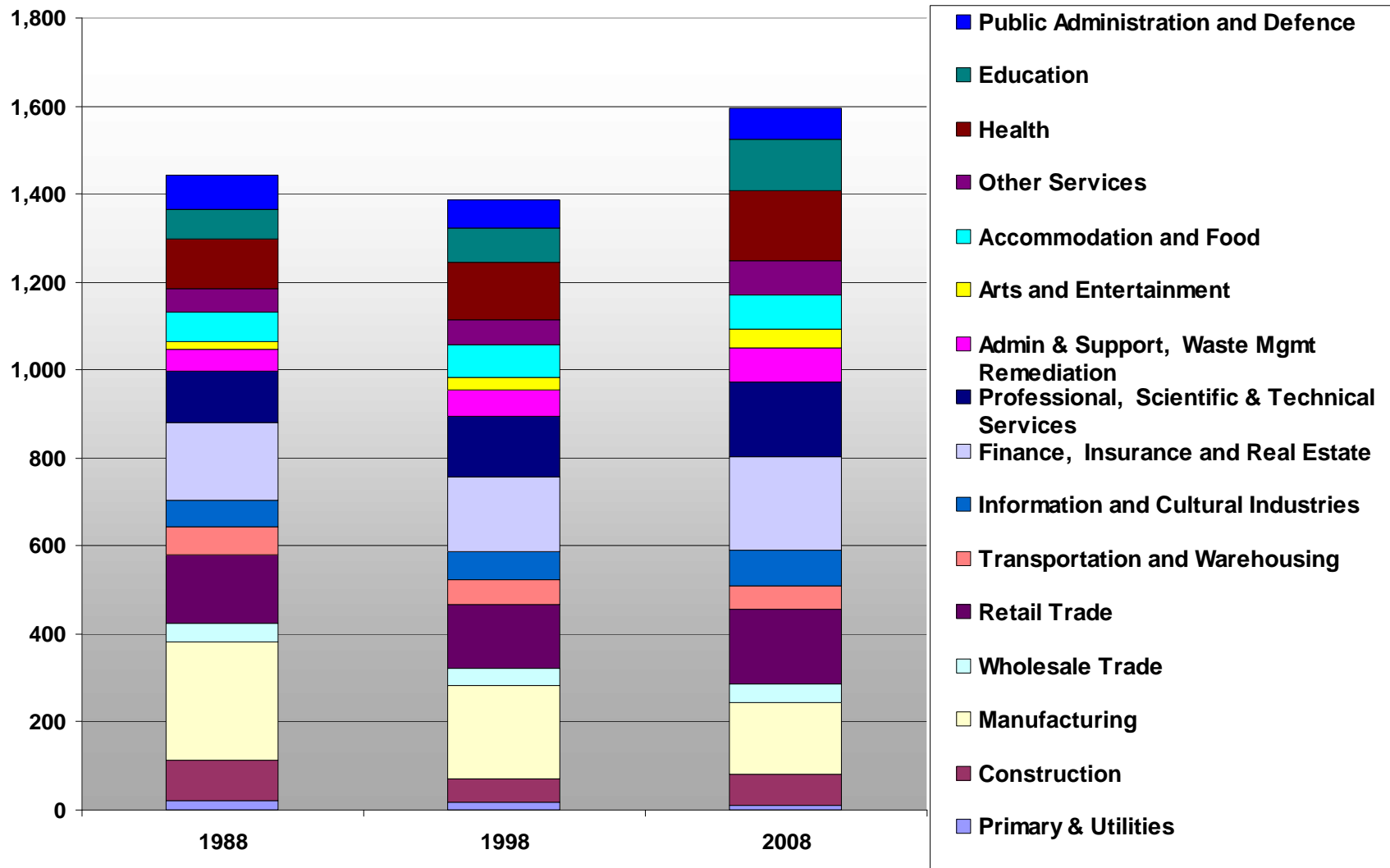
Involuntary Part-Time Employment



Part-time not yet showing recession patterns



Jobs by Industry in City 2008



Mfg down, Services (Retail, Fin, Health and Educ) up

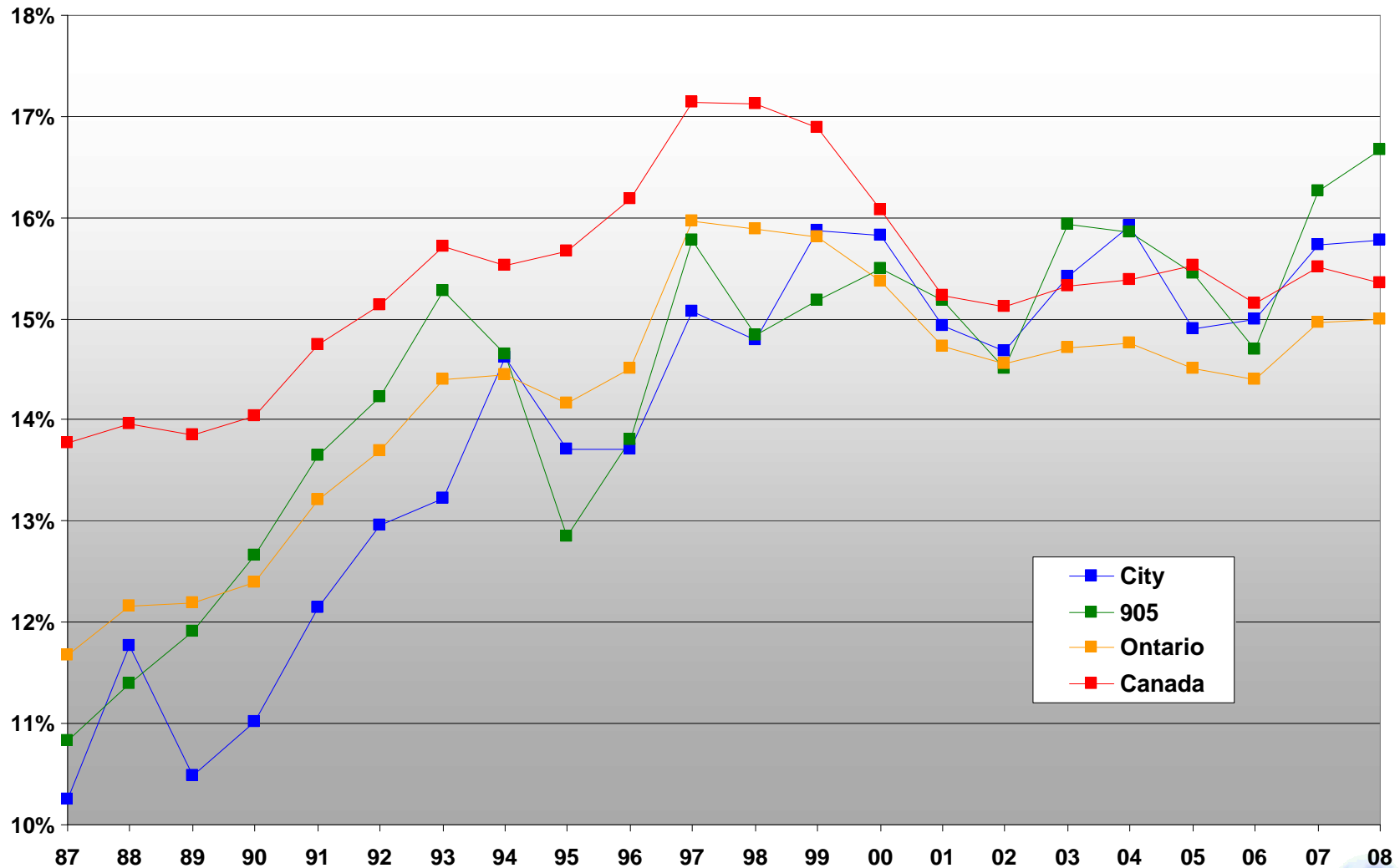


Businesses by Size and Sector

Statistics Canada, Business Register (Dec/08)	Total	1-49	50-499	500 +
Total	83,247	78,231	4,530	486
11 - Agriculture, Forestry, Fishing and Hunting	133	130	3	0
21 - Mining, Quarring, and Oil and Gas Extraction	135	120	14	1
22 - Utilities	51	39	6	6
23 - Construction	4,803	4,631	164	8
31-33 - Manufacturing	4,131	3,490	599	42
41 - Wholesale Trade	4,692	4,394	286	12
44-45 - Retail Trade	8,681	8,175	470	36
48-49 - Transportation and Warehousing	1,513	1,411	87	15
51 - Information and Cultural Industries	2,272	2,058	185	29
52 - Finance and Insurance	4,220	3,800	357	63
53 - Real Estate and Rental and Leasing	4,123	3,976	135	12
54 - Professional, Scientific and Technical Services	13,136	12,671	432	33
55 - Management of Companies and Enterprises	1,713	1,489	188	36
56 - Administrative and Support, Waste Mgmt	4,166	3,707	397	62
61 - Educational Services	1,129	1,040	78	11
62 - Health Care and Social Assistance	7,632	7,288	297	47
71 - Arts, Entertainment and Recreation	1,185	1,085	90	10
72 - Accommodation and Food Services	5,499	5,097	390	12
81 - Other Services (except Public Admin)	13,772	13,535	227	10
91 - Public Administration	261	95	125	41



Per Cent Self-Employed



Growth of self-employment has slowed in area



Companies moving in (last 3 years)

	Sq Ft
Cadbury	75,000
Nortel Networks Corp	160,000
The Equitable Trust Co.	10,000
Baywood Marble	30,000
Pasta Quintini	91,200
Biochem Environmental Solutions	29,000
Merril Lynch	26,000
Newalta Industrial Services Inc.	28,000
Stantec Architecture	40,000
Canon Canada - Business Solutions	60,000
Total	565,200

Partial list – complete list unknown



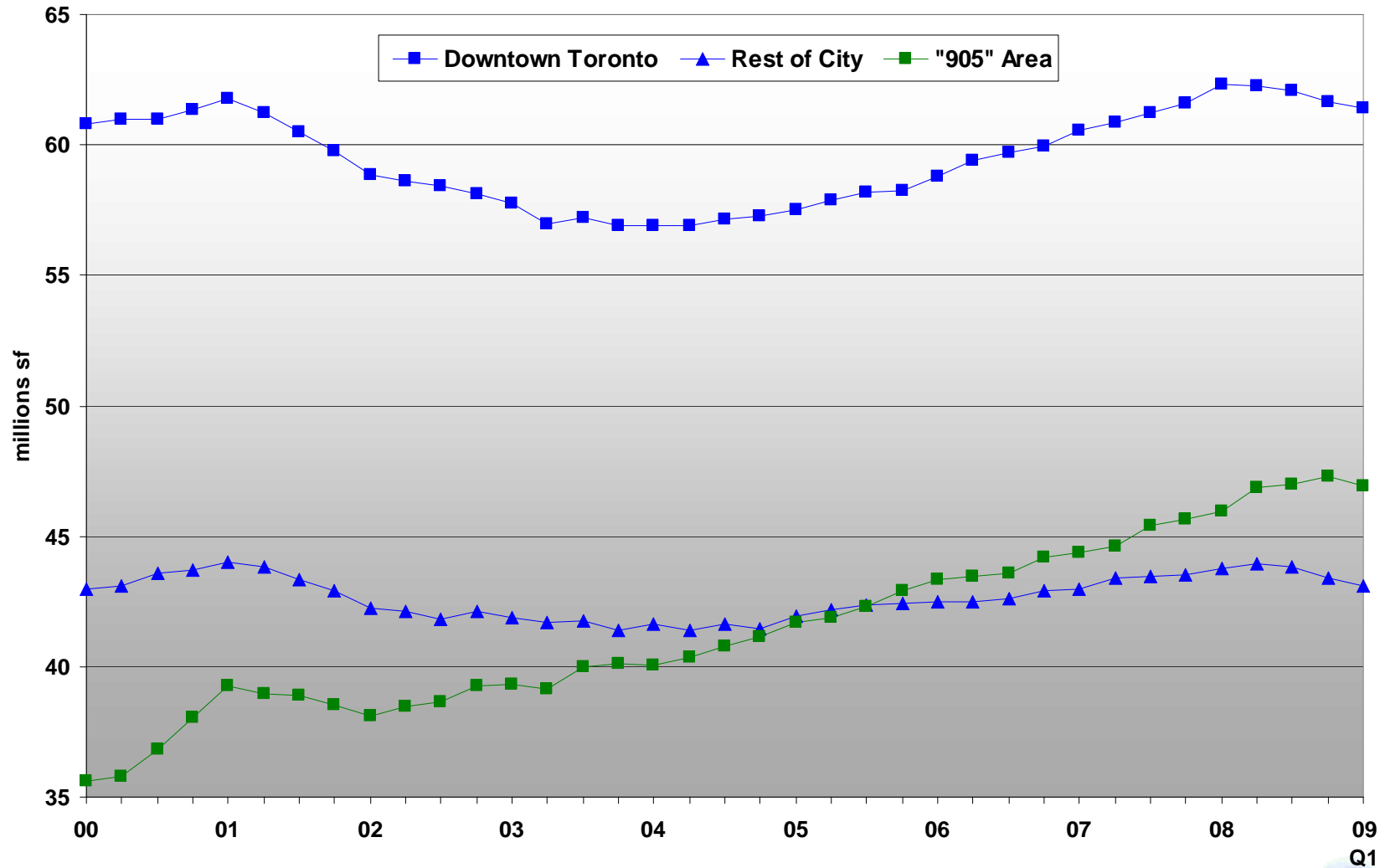
Companies moving out (last 3 years)

	Sq Ft
Bank of Montreal	179,000
Tata Consulting	22,000
Alberto Culver	32,000
Carlton Cards	38,000
MDS	55,000
State Farm	300,000
CGI	375,000
Honeywell	75,000
Citibank	125,000
Hummingbird	125,000
Rogers Communications	117,500
St Joseph Thorn	44,787
Total	1,488,287

Partial list – complete list unknown



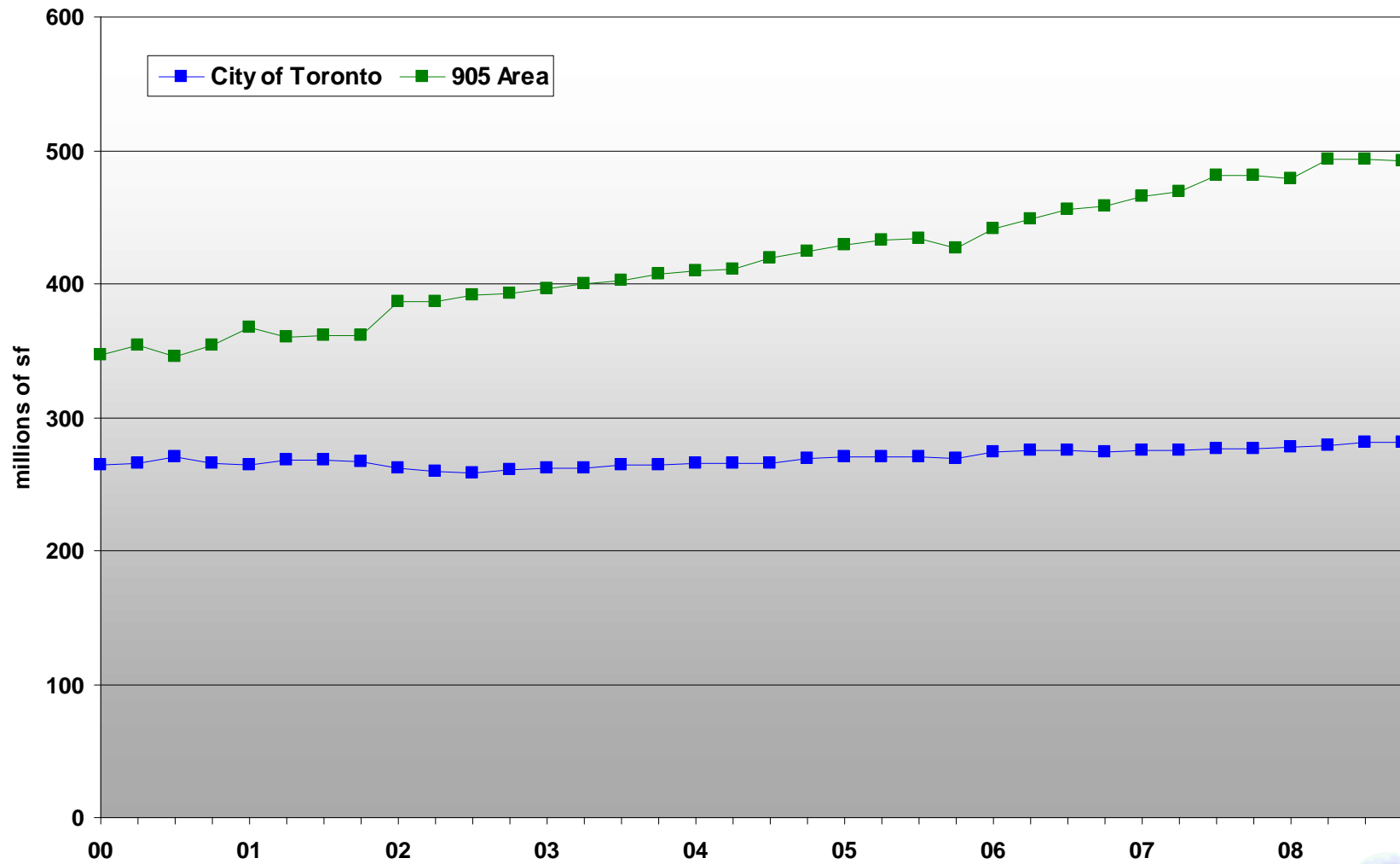
Occupied Office Space



Recession biting office space, note growth in 905



Occupied Industrial Space



Industrial space more constant



What we know and don't know

Known

- Broad employment and inflation trends
- Broad job quality (income, part-time)
- Industry mix and net changes
- Population and work-live relationships

Not Known well

- Full list of who leaves, downsizes, grows or comes in
- Good insights on why shifts occur
- Trends in available job openings



Recommendations

- Ask StatCan to:
 - add work-live data regarding City
 - Increase sample size to get better detail
- Approach Feds and Prov to establish 'table' to improve urban metrics
 - Establish 'job vacancy' survey



Questions?

