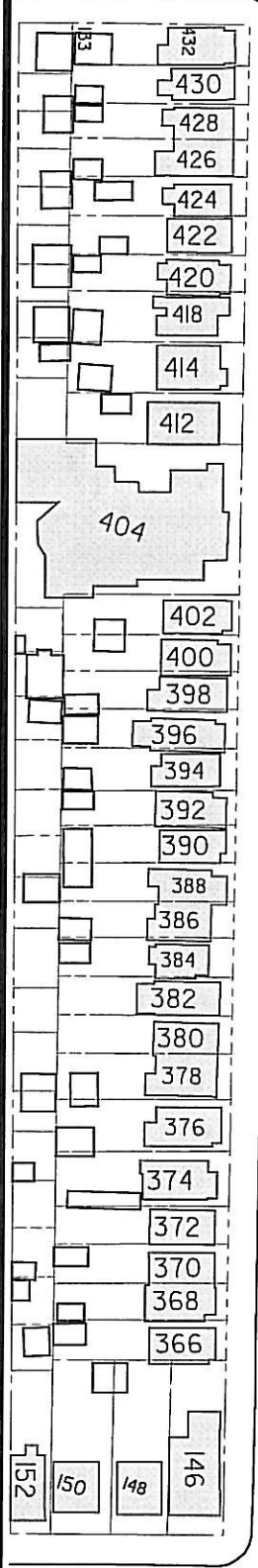
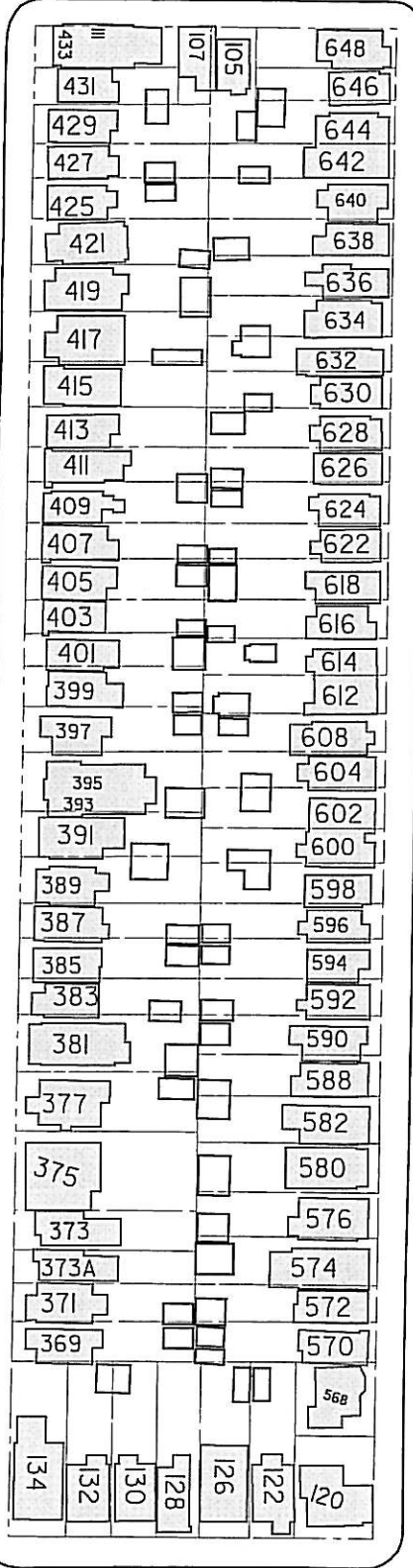


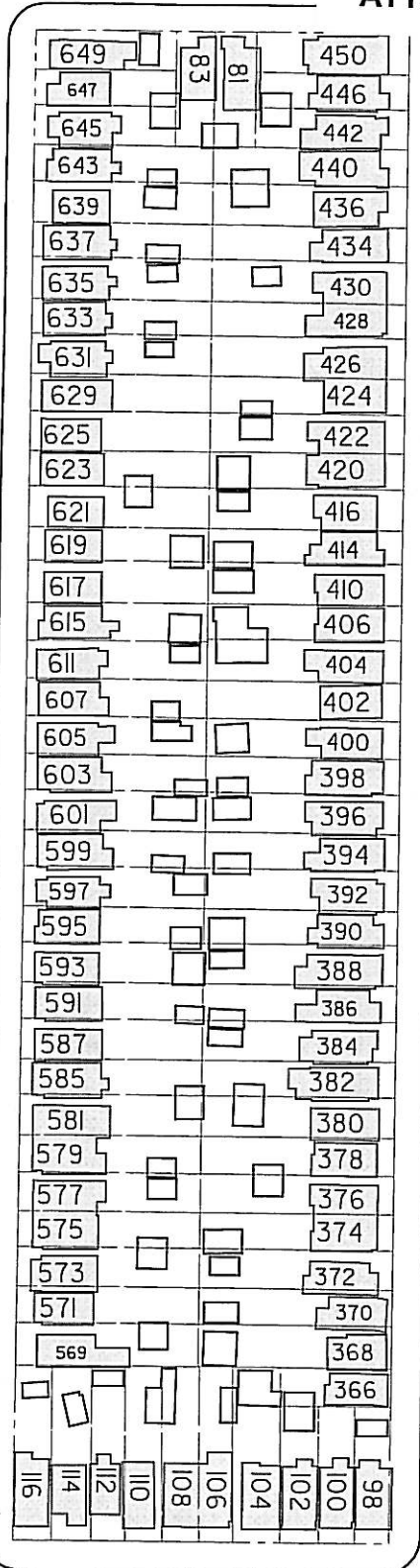
ARDAGH ST



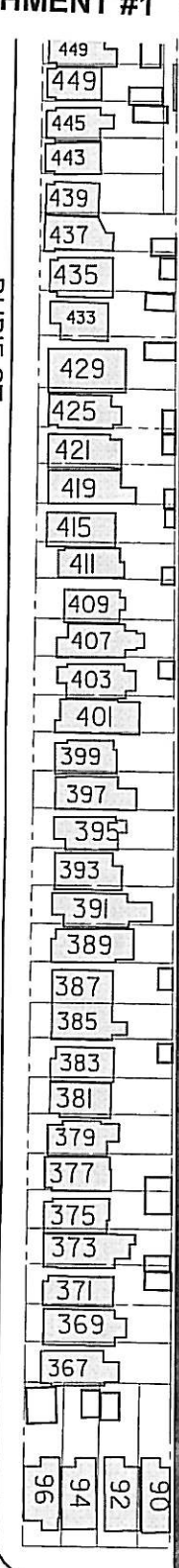
WILLARD AVE



WINDERMERE AVE

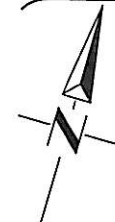


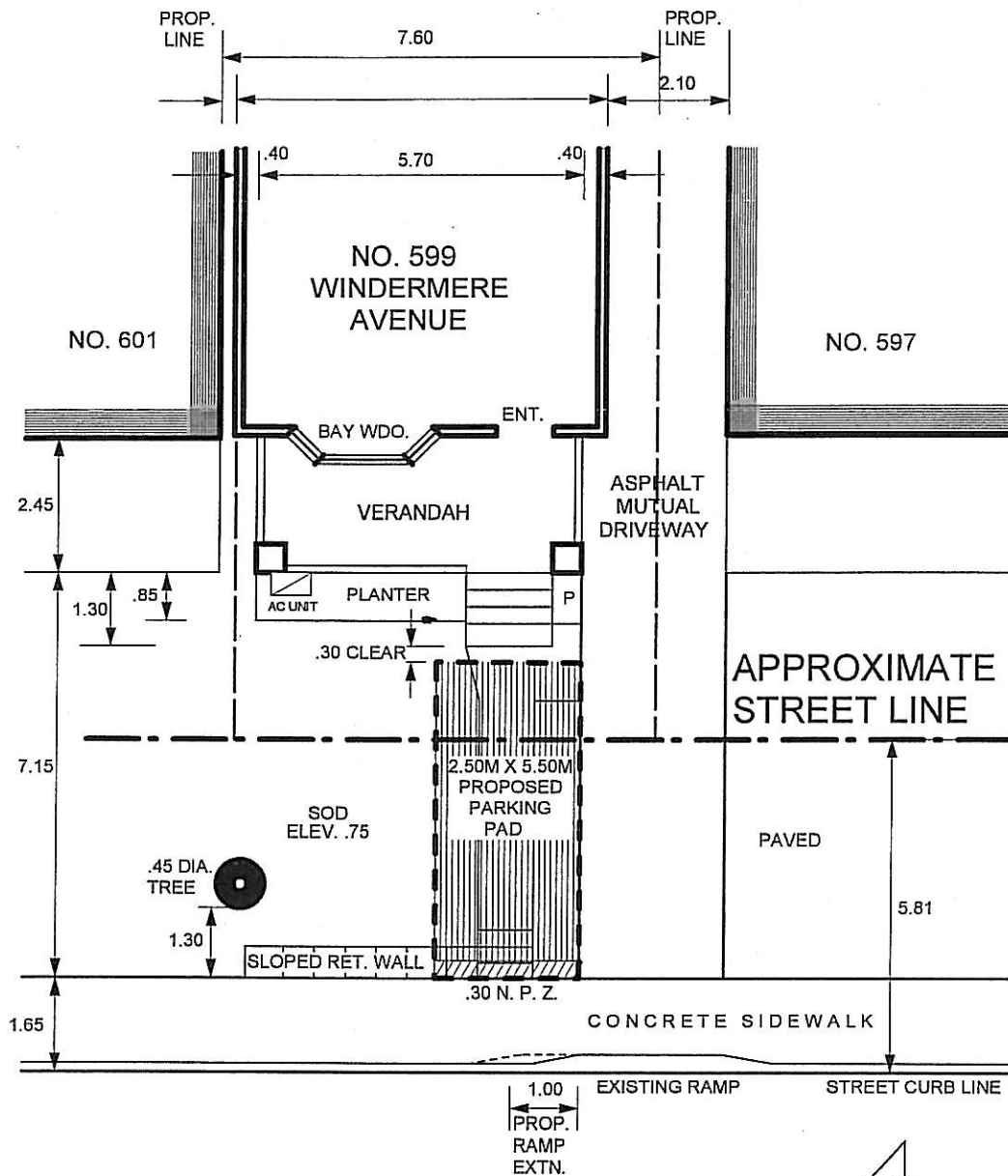
DURIE ST



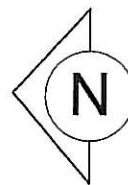
COLBECK ST

599 WINDERMERE AVE  
FRONT YARD PARKING





# WINDERMERE AVENUE



FRONT YARD PARKING				
FOR: LOCATION: NO. 599 WINDERMERE AVE., TORONTO				
ABOVE STREET LINE			BELOW STREET LINE	
TOT. AREA	22.74 SM	100%	100%	TOT. AREA 31.61 SM
PAVED AREA	9.33 SM	40.7%	49.9%	PAVED AREA 15.80 SM
TOT. LOS AREA	13.41 SM	59.3%	50.1%	TOT. LOS AREA 15.81 SM
DATE DRAWN : OCT. 2, 2007 REVISED DATE : ***** SCALE : 1 : 100 METERS			NOTE:	

