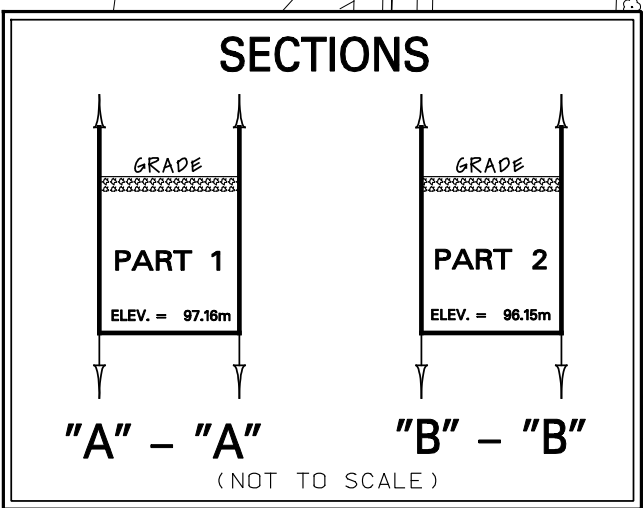
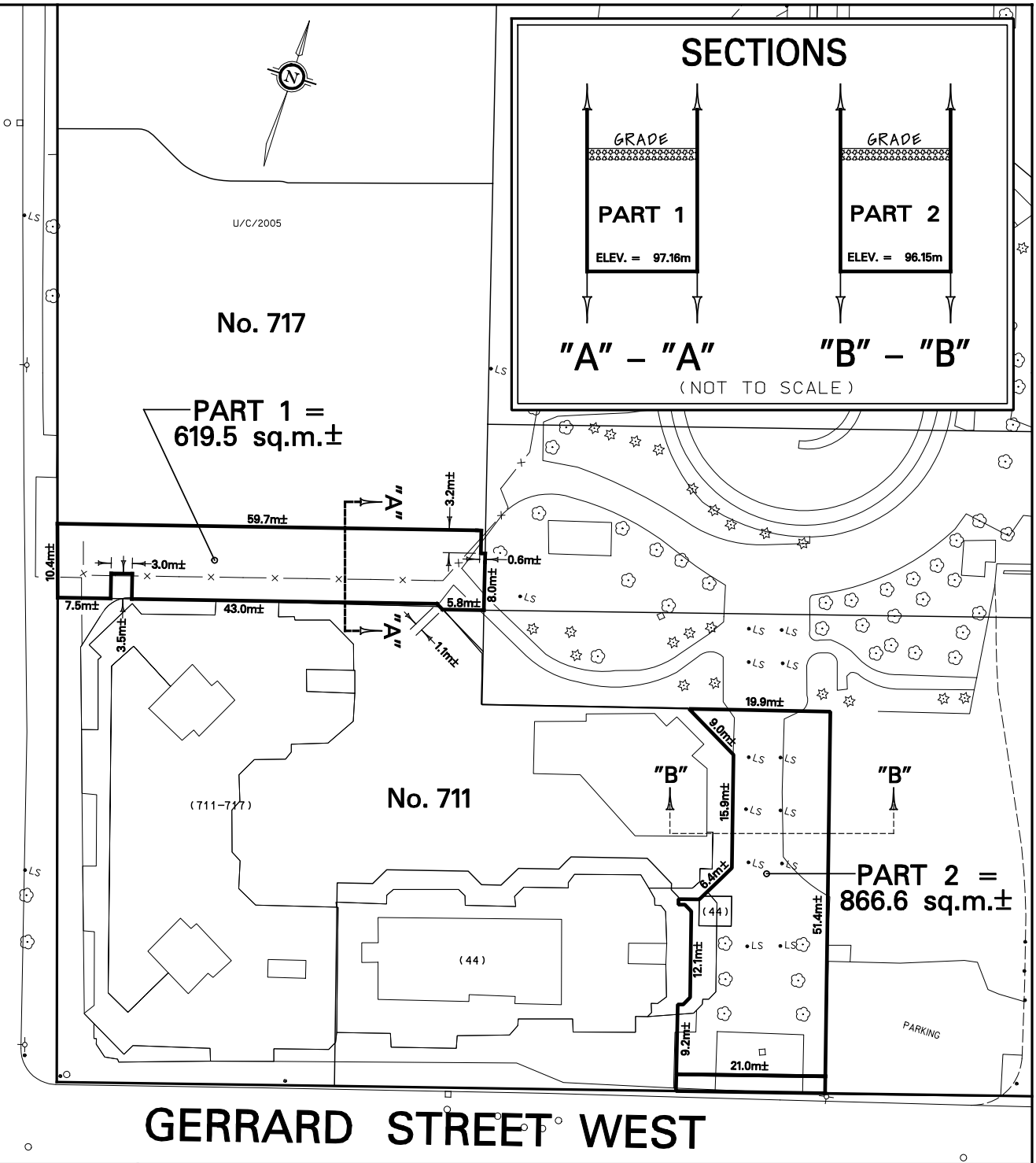


BAY STREET



No. 717

PART 1 = 619.5 sq.m.±

No. 711

PART 2 = 866.6 sq.m.±

GERRARD STREET WEST

Toronto
TECHNICAL SERVICES DIVISION
SURVEY & MAPPING SERVICES

NOTE:
THIS SKETCH HAS BEEN COMPILED FROM OFFICE RECORDS
NOT TO SCALE
CHECKED BY: JOHN HOUSE
PREPARED BY: FRANK FURFARO

PROPERTY INFORMATION SHEET

ACQUISITION OF LAND FOR WALKWAY PURPOSES
FROM No. 717 BAY STREET (PART 1)
AND No. 711 BAY STREET (PART 2)

WARD 27 - TORONTO CENTRE-ROSEDALE
DATE: JUNE. 24, 2008

SKETCH No. PS-2008-026