

The Contractor shall erect and maintain all signs and structures in accordance with the provisions of the Ordinance, by the City of Dallas.

NOTE:
All graphic information on this plan shall be subject to the provisions of the Ordinance, by the City of Dallas, and shall be subject to the provisions of the Ordinance, by the City of Dallas, and shall be subject to the provisions of the Ordinance, by the City of Dallas.

SITE STATISTICS

ZONING: -M(12)(1)(b)
SITE AREA: 37,255.0 sq ft

EXISTING: Building A - 2,477.83 sq ft (ground floor & basement)
Building B - 5,450.00 sq ft (floors 2 to 5)
Building C - 5,450.00 sq ft (floors 2 to 5)
Total existing - 13,377.83 sq ft
Proposed signs: SIGN A & SIGN B - 0.00 sq ft

EXISTING: Building A - 2,477.83 sq ft
Building B - 5,450.00 sq ft
Building C - 5,450.00 sq ft
Total existing - 13,377.83 sq ft
Proposed signs: SIGN A & SIGN B - 0.00 sq ft

EXISTING: Building A - 2,477.83 sq ft
Building B - 5,450.00 sq ft
Building C - 5,450.00 sq ft
Total existing - 13,377.83 sq ft
Proposed signs: SIGN A & SIGN B - 0.00 sq ft

EXISTING: Building A - 2,477.83 sq ft
Building B - 5,450.00 sq ft
Building C - 5,450.00 sq ft
Total existing - 13,377.83 sq ft
Proposed signs: SIGN A & SIGN B - 0.00 sq ft

EXISTING: Building A - 2,477.83 sq ft
Building B - 5,450.00 sq ft
Building C - 5,450.00 sq ft
Total existing - 13,377.83 sq ft
Proposed signs: SIGN A & SIGN B - 0.00 sq ft

EXISTING: Building A - 2,477.83 sq ft
Building B - 5,450.00 sq ft
Building C - 5,450.00 sq ft
Total existing - 13,377.83 sq ft
Proposed signs: SIGN A & SIGN B - 0.00 sq ft

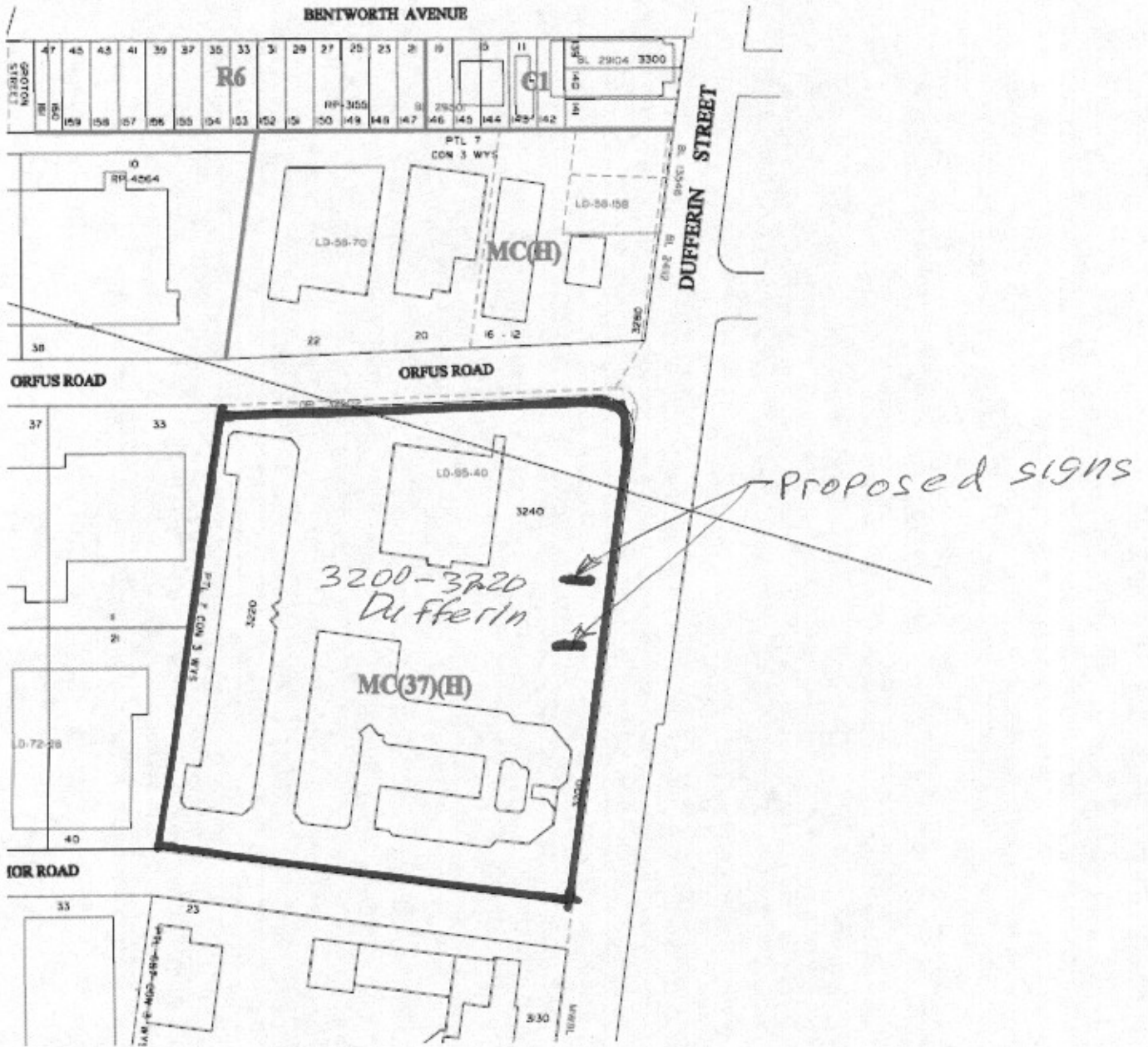
GENERAL NOTES
1. THE CONTRACTOR SHALL BE RESPONSIBLE FOR OBTAINING ALL NECESSARY PERMITS AND APPROVALS FROM THE CITY OF DALLAS AND THE TEXAS DEPARTMENT OF TRANSPORTATION AND SHALL BE RESPONSIBLE FOR MAINTAINING ALL PERMITS AND APPROVALS CURRENT THROUGHOUT THE PROJECT.

NO.	DESCRIPTION	DATE
1	ISSUED FOR PERMITS	11/15/11
2	ISSUED FOR PERMITS	11/15/11
3	ISSUED FOR PERMITS	11/15/11

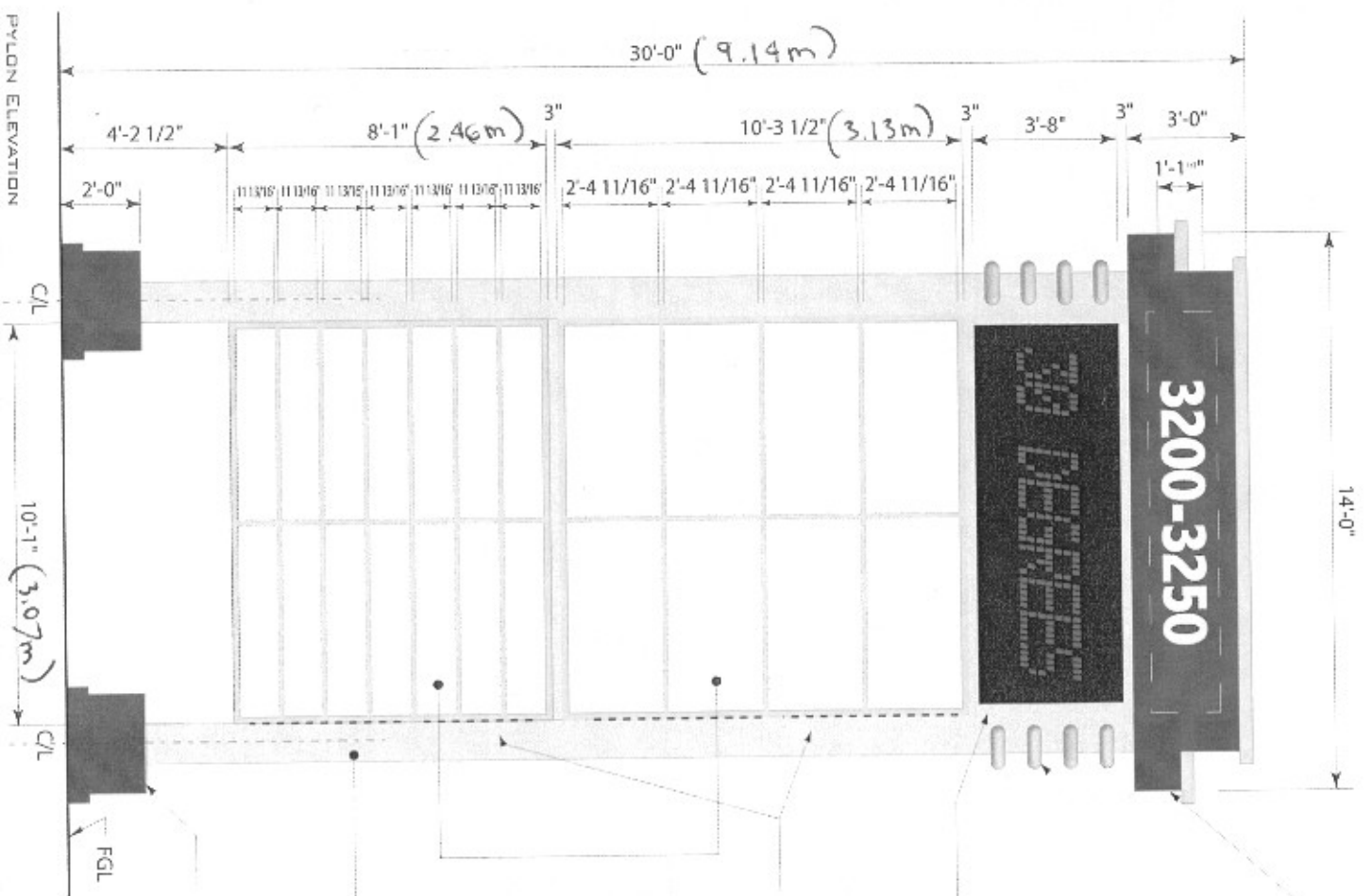
BLAUENBERG COS
2400 WESTERN AVENUE
DALLAS, TEXAS 75201
TEL: 972.382.1111
WWW.BLAUENBERG.COM

MOEBUR-SMITH ARCHITECTS
1401 N. GILBERT AVENUE, SUITE 100
DALLAS, TEXAS 75203
TEL: 972.382.1111
WWW.MOEBURSMITH.COM

MOEBUR-SMITH ARCHITECTS
1401 N. GILBERT AVENUE, SUITE 100
DALLAS, TEXAS 75203
TEL: 972.382.1111
WWW.MOEBURSMITH.COM



SIGN A



- DOUBLE SIDED ILLUMINATED HEADER
- REPLACEABLE ACRYLIC HEADER PANEL
- ALUMINUM CONSTRUCTION
- PAINTED TO MATCH PMS
- ACCENTS - ALUMINUM CONSTRUCTION
- PAINTED TO MATCH PMS
- PARTIAL ROUND DECORATIVE ACCENTS
- ACCENTS - PAINTED TO MATCH PMS

- FULL COLOUR LED DISPLAYS
- DAKTRONICS GALAXY PRO
- AF-3700-32X60-34-RGB-2V
- OUTDOOR RGB LED DISPLAY
- 20MM OR 34MM PITCH
- DISPLAYS 4 LINES X 16 CHARACTERS
- SIZE: 4'-1" X 9'-5" X 9" DEEP
- ALL SPECIFICATIONS TBC

- REMOVABLE SIDE ANGLES
- TWO SECTIONS FOR TOP FOUR
- TWO SECTIONS FOR BOTTOM SEVEN

- DOUBLE SIDED
- ILLUMINATED TENANT SIGN BOXES
- 3/16" THK. WHITE PLEXIGLAS FACES
- ALUMINUM FRAMES
- ALUMINUM FILLER (SIGN CABINETS)
- EXTRUDED ALUMINUM DIVIDERS
- FRAMES, FILTERS & DIVIDERS
- PAINTED TO MATCH PMS
- ILLUMINATION
- HORIZONTAL HIGH OUTPUT FLUORESCENT LAMPS

- POLES
- 12" X 12" STEEL HSS
- PAINTED TO MATCH PMS

- BASE COVER OVER SQUARE CONCRETE
- ALUMINUM CONSTRUCTION
- PAINTED TO MATCH PMS
- ABOVE GRADE USE SQUARE CONCRETE BASE

PYLON ELEVATION

C/L

10'-1" (3.07m)

C/L

FGL

*** SITE NUMBER REVISIONS

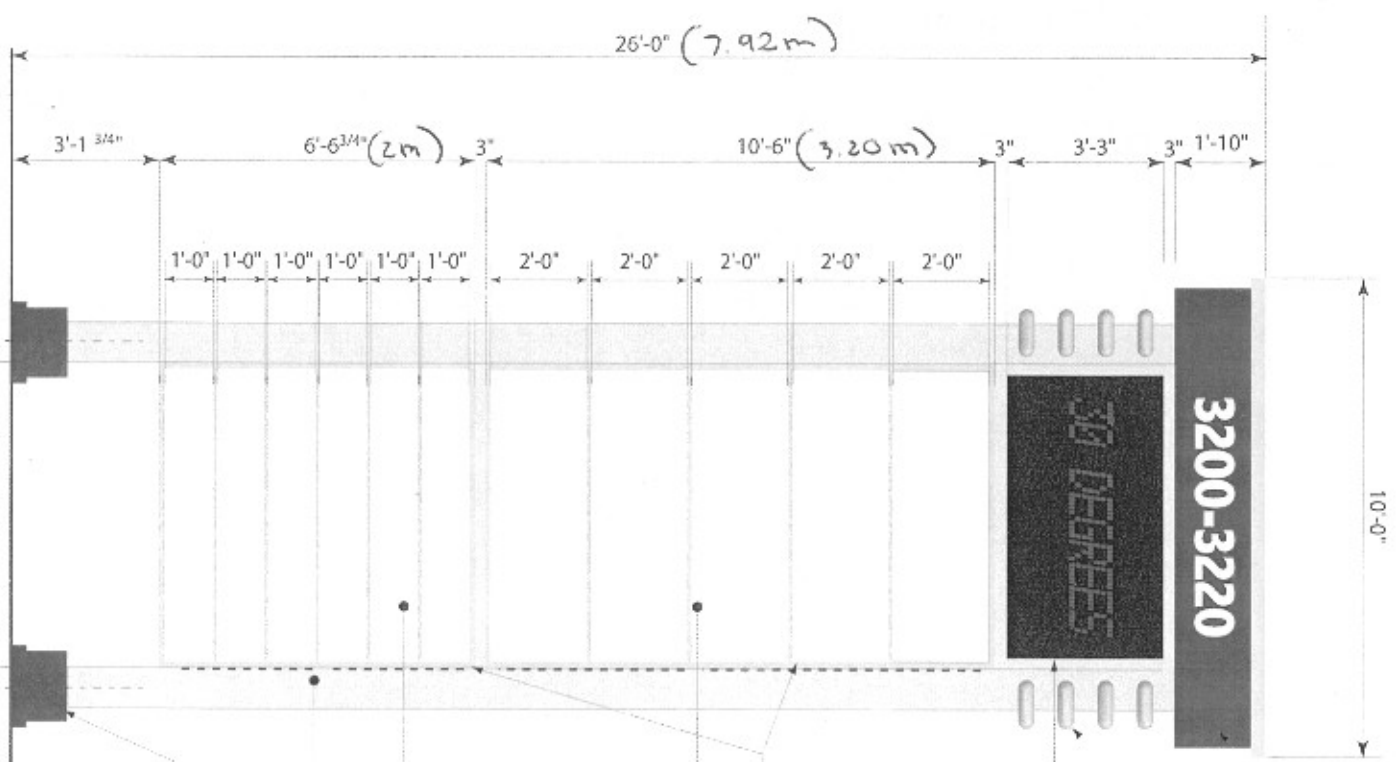
END 1

2'-6"

Sign R

ON SITE EVALUATION

6'-3" (1.90m)
C/L



- DOUBLE SIDED ILLUMINATED HEADER
- ALUMINUM CONSTRUCTION
- PAINTED TO MATCH PMS
- ACCENTS - ALUMINUM CONSTRUCTION
- PAINTED TO MATCH PMS

- PARTIAL ROUND DECORATIVE ACCENTS
- ACCENTS - PAINTED TO MATCH PMS

- FULL COLOUR LED DISPLAYS
- DAKTRONICS GALAXY PRO
- AF-3700-24X48-24-RGB-2V
- OUTDOOR RGB LED DISPLAY
- 24 X 48 PIXELS, 20MM DR 34MM PITCH
- DISPLAYS 3 LINES X 9 CHARACTERS
- SIZE: 3'-3" X 5'-10" X 9" DEEP
- ALL SPECIFICATIONS TBC

- REMOVABLE SIDE ANGLES
- TWO SECTIONS FOR TOP FIVE
- TWO SECTIONS FOR BOTTOM SIX

- DOUBLE SIDED ILLUMINATED TENANT SIGN BOXES
- 3/16" THK. WHITE PLEXIGLAS FACES
- ALUMINUM FRAMES
- ALUMINUM FILLER (SIGN CABINETS)
- EXTRUDED ALUMINUM DIVIDERS
- FRAMES, FILLERS & DIVIDERS
- PAINTED TO MATCH PMS
- ILLUMINATION
- HORIZONTAL HIGH OUTPUT FLUORESCENT LAMPS

- POLES
- 10" X 10" STEEL HSS
- PAINTED TO MATCH PMS

- BASE COVER OVER SQUARE CONCRETE
- ALUMINUM CONSTRUCTION
- PAINTED TO MATCH PMS
- ABOVE GRADE USE SQUARE CONCRETE BASE

FGL

ON SITE CHECK DEFINITION

EN