

PERMITS SCHEDULE

PERMIT	DATE	STATUS
1	2008	ISSUED
2	2008	ISSUED
3	2008	ISSUED
4	2008	ISSUED
5	2008	ISSUED
6	2008	ISSUED
7	2008	ISSUED
8	2008	ISSUED
9	2008	ISSUED
10	2008	ISSUED
11	2008	ISSUED
12	2008	ISSUED
13	2008	ISSUED
14	2008	ISSUED
15	2008	ISSUED
16	2008	ISSUED
17	2008	ISSUED
18	2008	ISSUED
19	2008	ISSUED
20	2008	ISSUED
21	2008	ISSUED
22	2008	ISSUED
23	2008	ISSUED
24	2008	ISSUED
25	2008	ISSUED
26	2008	ISSUED
27	2008	ISSUED
28	2008	ISSUED
29	2008	ISSUED
30	2008	ISSUED
31	2008	ISSUED
32	2008	ISSUED
33	2008	ISSUED
34	2008	ISSUED
35	2008	ISSUED
36	2008	ISSUED
37	2008	ISSUED
38	2008	ISSUED
39	2008	ISSUED
40	2008	ISSUED
41	2008	ISSUED
42	2008	ISSUED
43	2008	ISSUED
44	2008	ISSUED
45	2008	ISSUED
46	2008	ISSUED
47	2008	ISSUED
48	2008	ISSUED
49	2008	ISSUED
50	2008	ISSUED

PROPERTY

LOT AREA: 10,000 SQ. FT.

PERMITS SCHEDULE: 50 PERMITS

ACTUAL, APPROX. FLOOR AREA: 10,000 SQ. FT.

APPROXIMATE NUMBER OF UNITS: 50

APPROXIMATE GROSS FLOOR AREA: 10,000 SQ. FT.

APPROXIMATE GROSS VOLUME: 10,000 CU. FT.

APPROXIMATE TOTAL FLOOR AREA: 10,000 SQ. FT.

APPROXIMATE TOTAL VOLUME: 10,000 CU. FT.

APPROXIMATE TOTAL GROSS FLOOR AREA: 10,000 SQ. FT.

APPROXIMATE TOTAL GROSS VOLUME: 10,000 CU. FT.

APPROXIMATE TOTAL NET FLOOR AREA: 10,000 SQ. FT.

APPROXIMATE TOTAL NET VOLUME: 10,000 CU. FT.

APPROXIMATE TOTAL GROSS FLOOR AREA: 10,000 SQ. FT.

APPROXIMATE TOTAL GROSS VOLUME: 10,000 CU. FT.

APPROXIMATE TOTAL NET FLOOR AREA: 10,000 SQ. FT.

APPROXIMATE TOTAL NET VOLUME: 10,000 CU. FT.

APPROXIMATE TOTAL GROSS FLOOR AREA: 10,000 SQ. FT.

APPROXIMATE TOTAL GROSS VOLUME: 10,000 CU. FT.

APPROXIMATE TOTAL NET FLOOR AREA: 10,000 SQ. FT.

APPROXIMATE TOTAL NET VOLUME: 10,000 CU. FT.

PROPERTY

NO.	DESCRIPTION	DATE	STATUS
1	CONTRACT	2008	ISSUED
2	PERMIT	2008	ISSUED
3	PERMIT	2008	ISSUED
4	PERMIT	2008	ISSUED
5	PERMIT	2008	ISSUED
6	PERMIT	2008	ISSUED
7	PERMIT	2008	ISSUED
8	PERMIT	2008	ISSUED
9	PERMIT	2008	ISSUED
10	PERMIT	2008	ISSUED
11	PERMIT	2008	ISSUED
12	PERMIT	2008	ISSUED
13	PERMIT	2008	ISSUED
14	PERMIT	2008	ISSUED
15	PERMIT	2008	ISSUED
16	PERMIT	2008	ISSUED
17	PERMIT	2008	ISSUED
18	PERMIT	2008	ISSUED
19	PERMIT	2008	ISSUED
20	PERMIT	2008	ISSUED
21	PERMIT	2008	ISSUED
22	PERMIT	2008	ISSUED
23	PERMIT	2008	ISSUED
24	PERMIT	2008	ISSUED
25	PERMIT	2008	ISSUED
26	PERMIT	2008	ISSUED
27	PERMIT	2008	ISSUED
28	PERMIT	2008	ISSUED
29	PERMIT	2008	ISSUED
30	PERMIT	2008	ISSUED
31	PERMIT	2008	ISSUED
32	PERMIT	2008	ISSUED
33	PERMIT	2008	ISSUED
34	PERMIT	2008	ISSUED
35	PERMIT	2008	ISSUED
36	PERMIT	2008	ISSUED
37	PERMIT	2008	ISSUED
38	PERMIT	2008	ISSUED
39	PERMIT	2008	ISSUED
40	PERMIT	2008	ISSUED
41	PERMIT	2008	ISSUED
42	PERMIT	2008	ISSUED
43	PERMIT	2008	ISSUED
44	PERMIT	2008	ISSUED
45	PERMIT	2008	ISSUED
46	PERMIT	2008	ISSUED
47	PERMIT	2008	ISSUED
48	PERMIT	2008	ISSUED
49	PERMIT	2008	ISSUED
50	PERMIT	2008	ISSUED

PROPERTY

APPROXIMATE NUMBER OF UNITS: 50

APPROXIMATE GROSS FLOOR AREA: 10,000 SQ. FT.

APPROXIMATE GROSS VOLUME: 10,000 CU. FT.

APPROXIMATE TOTAL FLOOR AREA: 10,000 SQ. FT.

APPROXIMATE TOTAL VOLUME: 10,000 CU. FT.

APPROXIMATE TOTAL GROSS FLOOR AREA: 10,000 SQ. FT.

APPROXIMATE TOTAL GROSS VOLUME: 10,000 CU. FT.

APPROXIMATE TOTAL NET FLOOR AREA: 10,000 SQ. FT.

APPROXIMATE TOTAL NET VOLUME: 10,000 CU. FT.

APPROXIMATE TOTAL GROSS FLOOR AREA: 10,000 SQ. FT.

APPROXIMATE TOTAL GROSS VOLUME: 10,000 CU. FT.

APPROXIMATE TOTAL NET FLOOR AREA: 10,000 SQ. FT.

APPROXIMATE TOTAL NET VOLUME: 10,000 CU. FT.

APPROXIMATE TOTAL GROSS FLOOR AREA: 10,000 SQ. FT.

APPROXIMATE TOTAL GROSS VOLUME: 10,000 CU. FT.

APPROXIMATE TOTAL NET FLOOR AREA: 10,000 SQ. FT.

APPROXIMATE TOTAL NET VOLUME: 10,000 CU. FT.

APPROXIMATE TOTAL GROSS FLOOR AREA: 10,000 SQ. FT.

APPROXIMATE TOTAL GROSS VOLUME: 10,000 CU. FT.

APPROXIMATE TOTAL NET FLOOR AREA: 10,000 SQ. FT.

APPROXIMATE TOTAL NET VOLUME: 10,000 CU. FT.

APPROXIMATE TOTAL GROSS FLOOR AREA: 10,000 SQ. FT.

APPROXIMATE TOTAL GROSS VOLUME: 10,000 CU. FT.

APPROXIMATE TOTAL NET FLOOR AREA: 10,000 SQ. FT.

APPROXIMATE TOTAL NET VOLUME: 10,000 CU. FT.

APPROXIMATE TOTAL GROSS FLOOR AREA: 10,000 SQ. FT.

APPROXIMATE TOTAL GROSS VOLUME: 10,000 CU. FT.

APPROXIMATE TOTAL NET FLOOR AREA: 10,000 SQ. FT.

APPROXIMATE TOTAL NET VOLUME: 10,000 CU. FT.

RECEIVED

NOV 21 2008

Toronto Building
North York District

211
PRINTS NOT TO BE S.I.T.

APPROXIMATE NUMBER OF UNITS: 50

APPROXIMATE GROSS FLOOR AREA: 10,000 SQ. FT.

APPROXIMATE GROSS VOLUME: 10,000 CU. FT.

APPROXIMATE TOTAL FLOOR AREA: 10,000 SQ. FT.

APPROXIMATE TOTAL VOLUME: 10,000 CU. FT.

APPROXIMATE TOTAL GROSS FLOOR AREA: 10,000 SQ. FT.

APPROXIMATE TOTAL GROSS VOLUME: 10,000 CU. FT.

APPROXIMATE TOTAL NET FLOOR AREA: 10,000 SQ. FT.

APPROXIMATE TOTAL NET VOLUME: 10,000 CU. FT.

APPROXIMATE TOTAL GROSS FLOOR AREA: 10,000 SQ. FT.

APPROXIMATE TOTAL GROSS VOLUME: 10,000 CU. FT.

APPROXIMATE TOTAL NET FLOOR AREA: 10,000 SQ. FT.

APPROXIMATE TOTAL NET VOLUME: 10,000 CU. FT.

APPROXIMATE TOTAL GROSS FLOOR AREA: 10,000 SQ. FT.

APPROXIMATE TOTAL GROSS VOLUME: 10,000 CU. FT.

APPROXIMATE TOTAL NET FLOOR AREA: 10,000 SQ. FT.

APPROXIMATE TOTAL NET VOLUME: 10,000 CU. FT.

APPROXIMATE TOTAL GROSS FLOOR AREA: 10,000 SQ. FT.

APPROXIMATE TOTAL GROSS VOLUME: 10,000 CU. FT.

APPROXIMATE TOTAL NET FLOOR AREA: 10,000 SQ. FT.

APPROXIMATE TOTAL NET VOLUME: 10,000 CU. FT.

PROPERTY

APPROXIMATE NUMBER OF UNITS: 50

APPROXIMATE GROSS FLOOR AREA: 10,000 SQ. FT.

APPROXIMATE GROSS VOLUME: 10,000 CU. FT.

APPROXIMATE TOTAL FLOOR AREA: 10,000 SQ. FT.

APPROXIMATE TOTAL VOLUME: 10,000 CU. FT.

APPROXIMATE TOTAL GROSS FLOOR AREA: 10,000 SQ. FT.

APPROXIMATE TOTAL GROSS VOLUME: 10,000 CU. FT.

APPROXIMATE TOTAL NET FLOOR AREA: 10,000 SQ. FT.

APPROXIMATE TOTAL NET VOLUME: 10,000 CU. FT.

APPROXIMATE TOTAL GROSS FLOOR AREA: 10,000 SQ. FT.

APPROXIMATE TOTAL GROSS VOLUME: 10,000 CU. FT.

APPROXIMATE TOTAL NET FLOOR AREA: 10,000 SQ. FT.

APPROXIMATE TOTAL NET VOLUME: 10,000 CU. FT.

APPROXIMATE TOTAL GROSS FLOOR AREA: 10,000 SQ. FT.

APPROXIMATE TOTAL GROSS VOLUME: 10,000 CU. FT.

APPROXIMATE TOTAL NET FLOOR AREA: 10,000 SQ. FT.

APPROXIMATE TOTAL NET VOLUME: 10,000 CU. FT.

APPROXIMATE TOTAL GROSS FLOOR AREA: 10,000 SQ. FT.

APPROXIMATE TOTAL GROSS VOLUME: 10,000 CU. FT.

APPROXIMATE TOTAL NET FLOOR AREA: 10,000 SQ. FT.

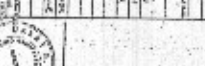
APPROXIMATE TOTAL NET VOLUME: 10,000 CU. FT.

APPROXIMATE TOTAL GROSS FLOOR AREA: 10,000 SQ. FT.

APPROXIMATE TOTAL GROSS VOLUME: 10,000 CU. FT.

APPROXIMATE TOTAL NET FLOOR AREA: 10,000 SQ. FT.

APPROXIMATE TOTAL NET VOLUME: 10,000 CU. FT.



PROPERTY

APPROXIMATE NUMBER OF UNITS: 50

APPROXIMATE GROSS FLOOR AREA: 10,000 SQ. FT.

APPROXIMATE GROSS VOLUME: 10,000 CU. FT.

APPROXIMATE TOTAL FLOOR AREA: 10,000 SQ. FT.

APPROXIMATE TOTAL VOLUME: 10,000 CU. FT.

APPROXIMATE TOTAL GROSS FLOOR AREA: 10,000 SQ. FT.

APPROXIMATE TOTAL GROSS VOLUME: 10,000 CU. FT.

APPROXIMATE TOTAL NET FLOOR AREA: 10,000 SQ. FT.

APPROXIMATE TOTAL NET VOLUME: 10,000 CU. FT.

APPROXIMATE TOTAL GROSS FLOOR AREA: 10,000 SQ. FT.

APPROXIMATE TOTAL GROSS VOLUME: 10,000 CU. FT.

APPROXIMATE TOTAL NET FLOOR AREA: 10,000 SQ. FT.

APPROXIMATE TOTAL NET VOLUME: 10,000 CU. FT.

APPROXIMATE TOTAL GROSS FLOOR AREA: 10,000 SQ. FT.

APPROXIMATE TOTAL GROSS VOLUME: 10,000 CU. FT.

APPROXIMATE TOTAL NET FLOOR AREA: 10,000 SQ. FT.

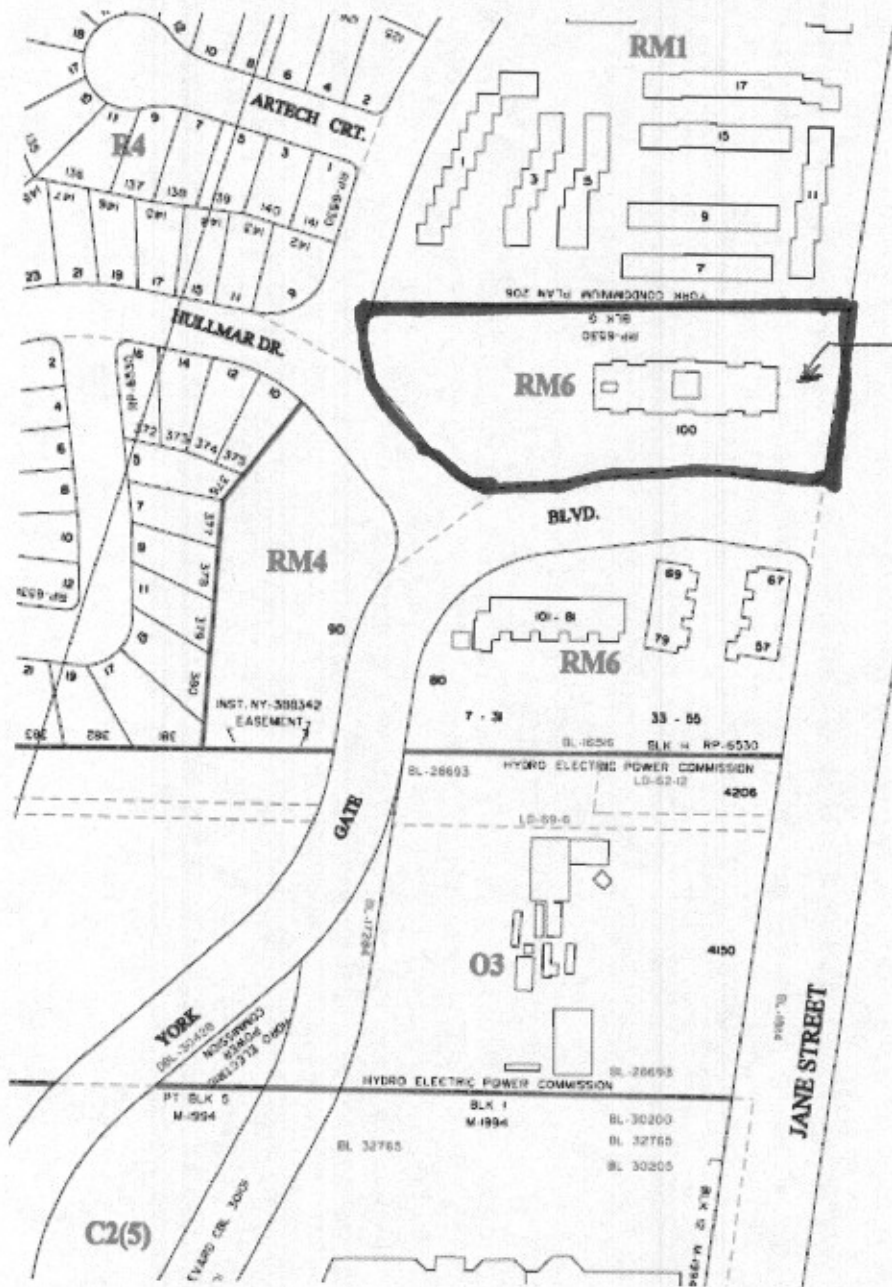
APPROXIMATE TOTAL NET VOLUME: 10,000 CU. FT.

APPROXIMATE TOTAL GROSS FLOOR AREA: 10,000 SQ. FT.

APPROXIMATE TOTAL GROSS VOLUME: 10,000 CU. FT.

APPROXIMATE TOTAL NET FLOOR AREA: 10,000 SQ. FT.

APPROXIMATE TOTAL NET VOLUME: 10,000 CU. FT.



Proposed
Ground sign

JANE STREET



December 29th, 2008

Galina Veltman
Manager Plan Review
Toronto Buildings

Dear Ms. Veltman;

As an Authorized Employee of McArthur Capital Inc; I have authorized Pattison Sign Group to obtain from The City of Toronto all permits/variances pertaining to the following Toronto address located at 100 York Gate Blvd; Toronto, M3N 2C4

I understand that there are a few issues that need clarification in order for our variance to be processed and approved by you. Accordingly, please note the following;

- The existing sign at 100 Yorkgate Blvd shall be replaced with the one we have filed for with the City, and shall be removed when the new sign is erected.
- The second "Gottarent" sign will be removed next month as it was only a temporary promotional trial, which is not working out.
- Seafield Nursery is a commercial unit located within the building at 100 York Gate and caters to several of our residents. We would like to include Seafield Nursery on our sign to advertise to new renters that we do in fact have one of Toronto's best Nursery schools on site.

I trust that the aforementioned is satisfactory, but if you need any further information, please do not hesitate to contact me at you convenience.

Sincerely,
McArthur Properties
Dianna Ruberto

Dianna Ruberto
Senior Property Manager

Ph: 416 633-0272
Fax: 416 633-0130
e-mail: diannar@mcarthurproperties.com

Job No.

Vintage #: mcrn0001
 Date: 10/09/07
 Design #: 07-0951
 Scale: 1/2"=1'-0"
 Sales: P. Brown
 Designer: R. Ferraro

Rev. #: R2
 Date: 08/11/08

- Vector Artwork Required
- High Resolution Image Required
- Final Colours Required

Conceptual artwork only

Electrical Required

120V 3

010-4V

*Package must be in plastic to customer after Customer Approval

Date _____

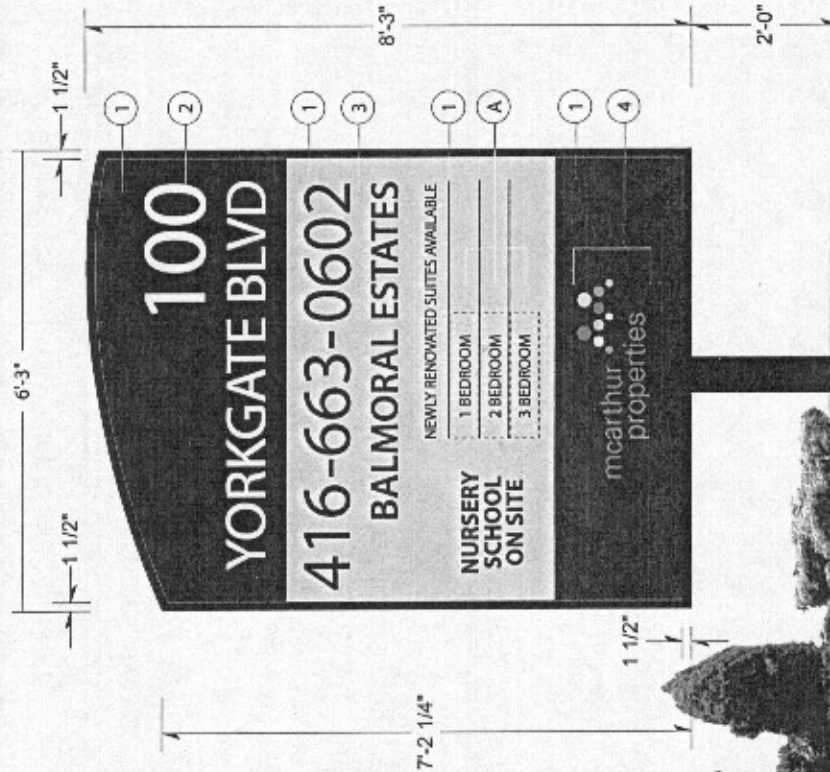
mearthur properties

100 Yorkgate B
 Toronto, ON

52 sq.ft.
Supply & install (1) one double face illuminated pylon sign
 Installed at 100 Yorkgate Blvd. - Jane St. Entrance

Aluminum fabricated custom cabinet painted satin black
 Clear lexan faces with 3M vinyl applied graphics second surface
 Graphics backed up with white diffuser vinyl
 H.O. Daylight fluorescent illumination
 Single pole support. Visible pole to be painted satin black
 New concrete base required
 Installation location to be determined

- ① 3M 3630-22 Black (Opaque background & all graphics on green field)
- ② Clear lexan face
- ③ 3M 3630-106 Brilliant Green (Translucent field)
- ④ 3M 3630-51 Silver Grey (Translucent)
- 3M 3630-106 Brilliant Green (Translucent)
- 3M 3630-33 Red (Translucent)
- 3M 3630-25 Sunflower (Translucent)



RECEIVED

NOV 2 6 2008
 Toronto Building
 North York District

Clear zip track with black vinyl stripe face applied (Same length as blade. Top 3 tracks only)
 Clear blade with black vinyl copy face applied

* Note: Clear tracks glued to face of clear acrylic. Install stoppers on ends of tracks to prevent faces from being vandalized or blown out by strong winds.

Patison Sign Group signs illuminated by Fluorescent tubes and/or LED Lamps contain Mercury (Hg). Dispose of these signs according to Local, State, Provincial or Federal Laws.

The artistic works depicted herein are copyright and are the exclusive property of Patison Sign Group and as such cannot be reproduced in whole or in part without prior written consent.

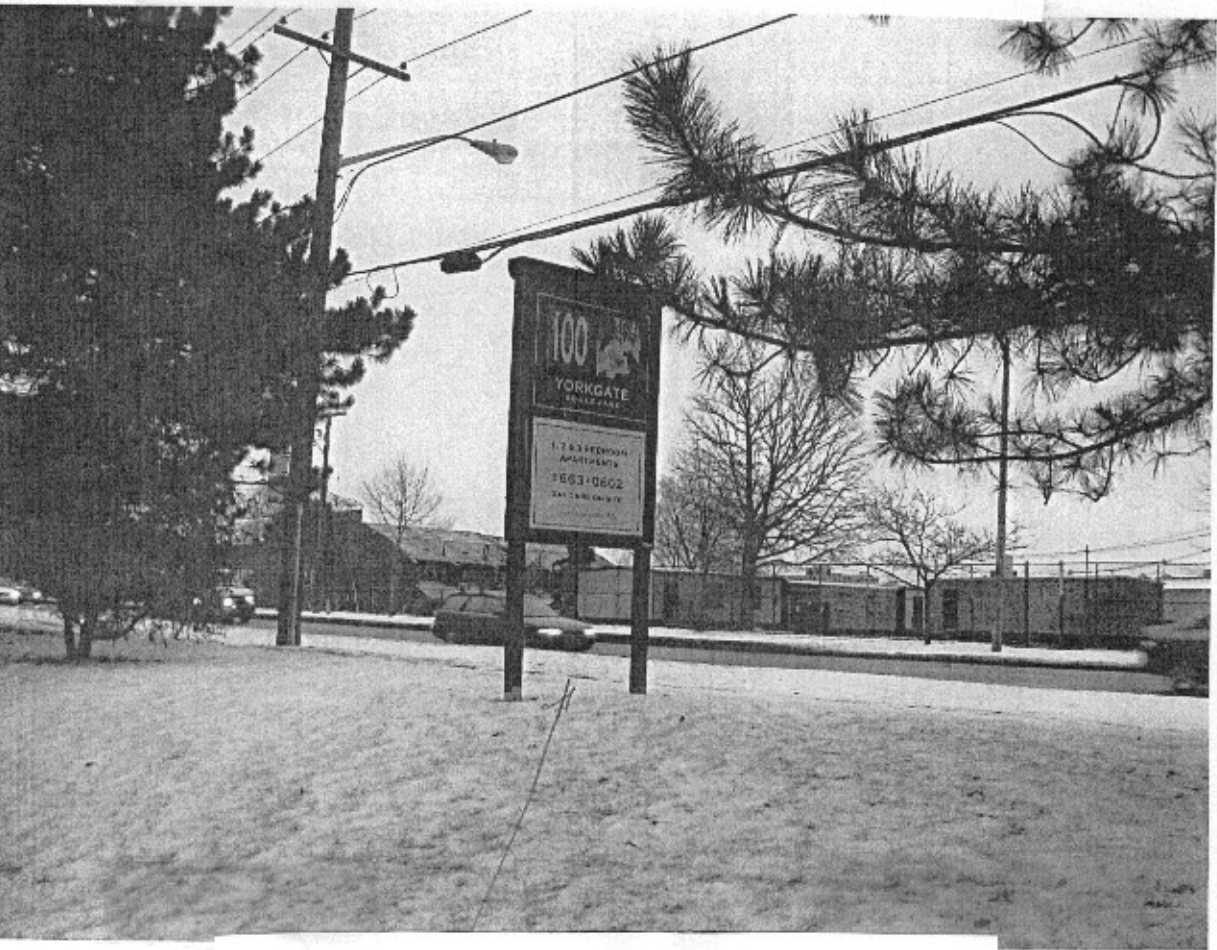
555 Elcmetre Road
 Toronto, Ontario, Canada M7H 4E8
 www.patison.com
 Tel: (416) 759-1111
 Fax: (416) 759-4955
 Toll Free: 1-800-258-6536



A Division of Art Patron Advertising Ltd.



Existing Ground Sign along Jane Street (1)



Existing Ground Sign along Jane Street (2)