

Lower Don Lands

Toronto, Ontario, Canada

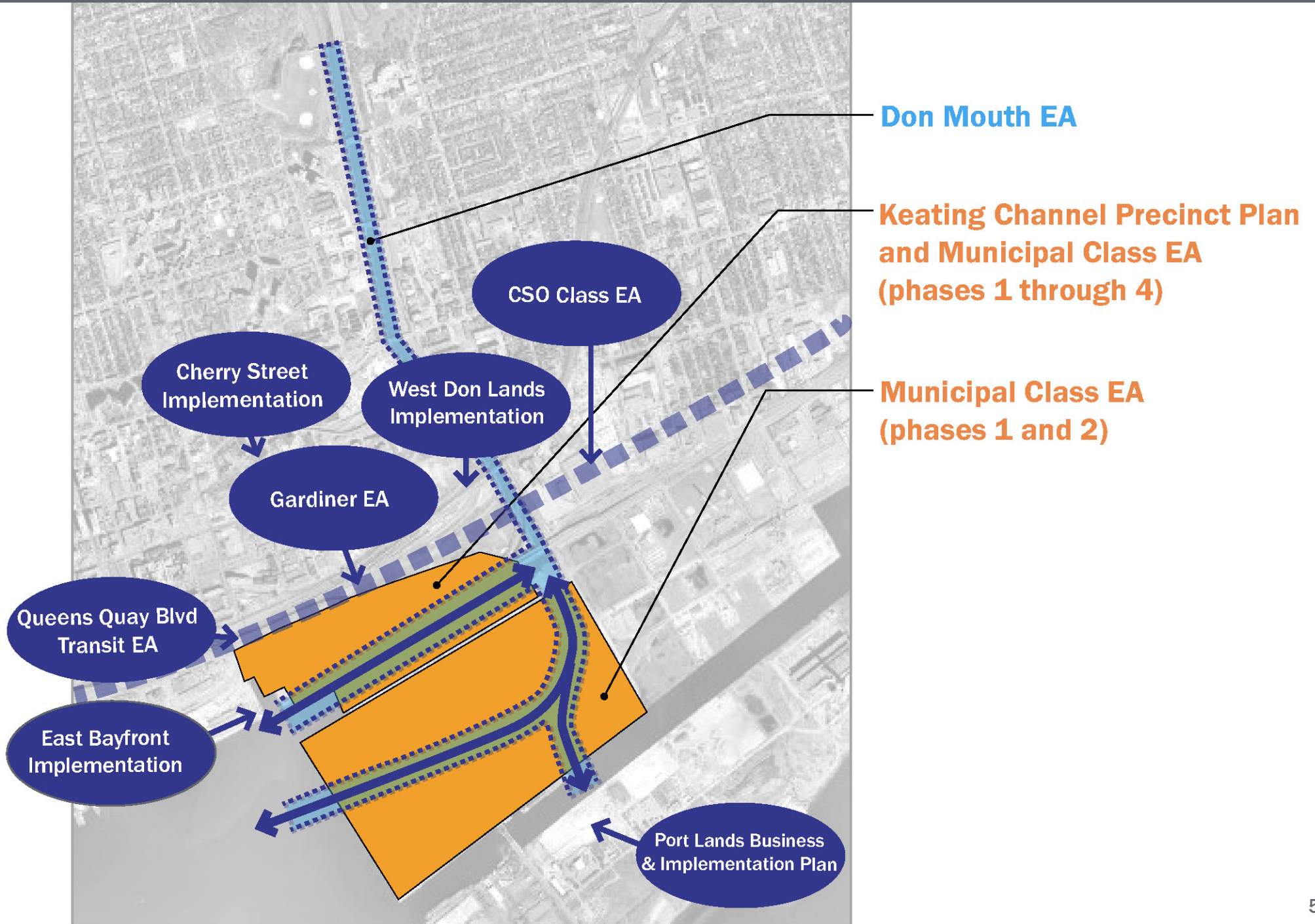


WATERFRONToronto



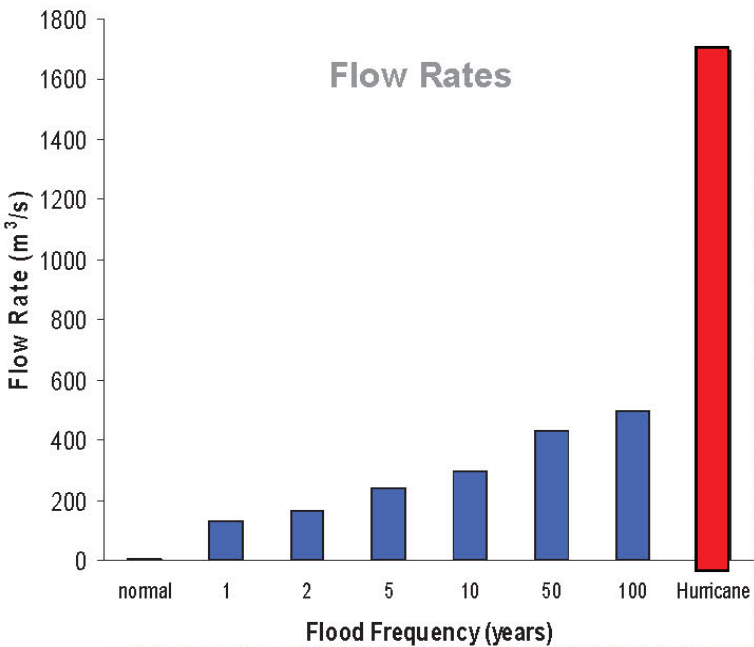
WATERFRONToronto

Coordination of Current Projects



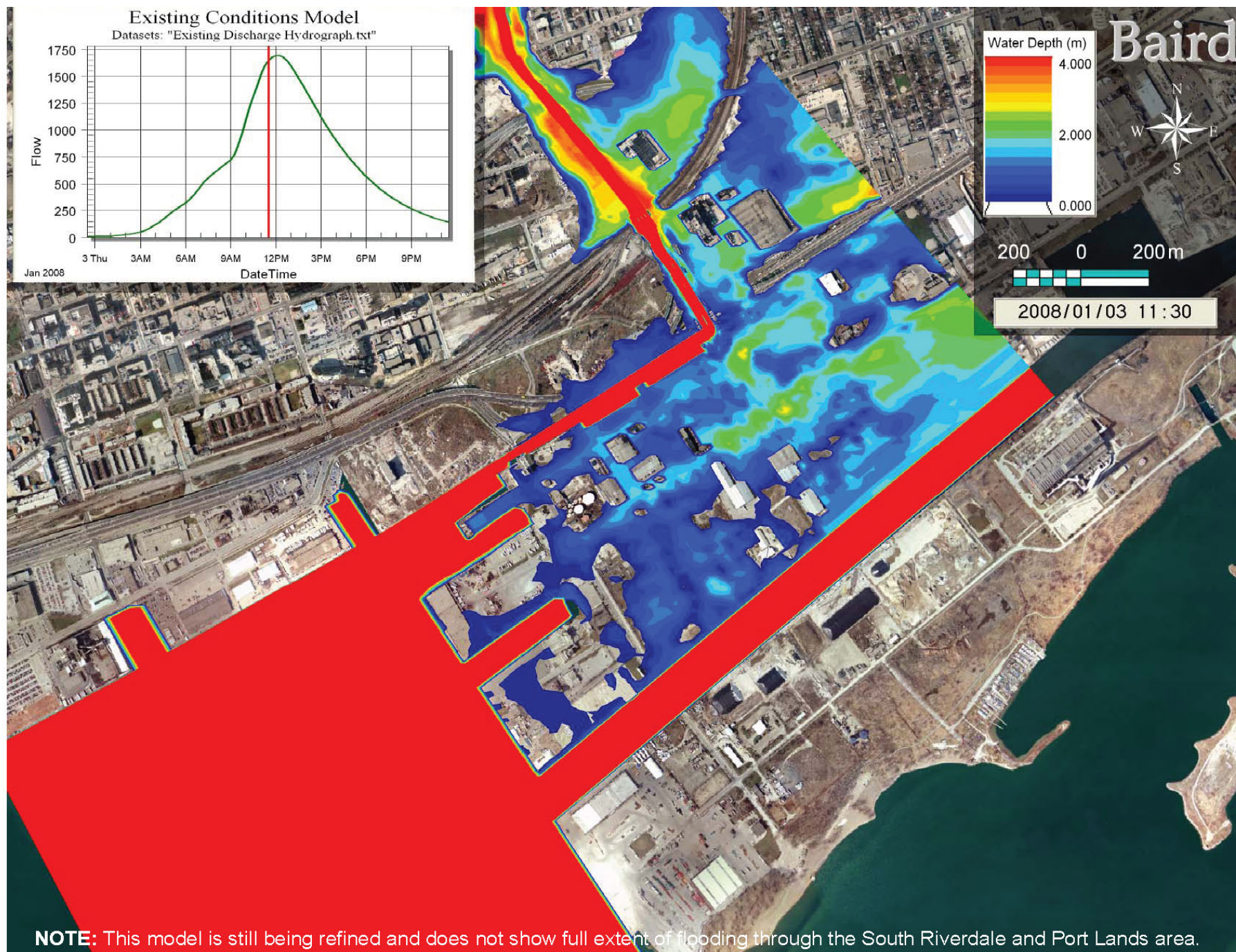


Extent of Flood Vulnerable Area





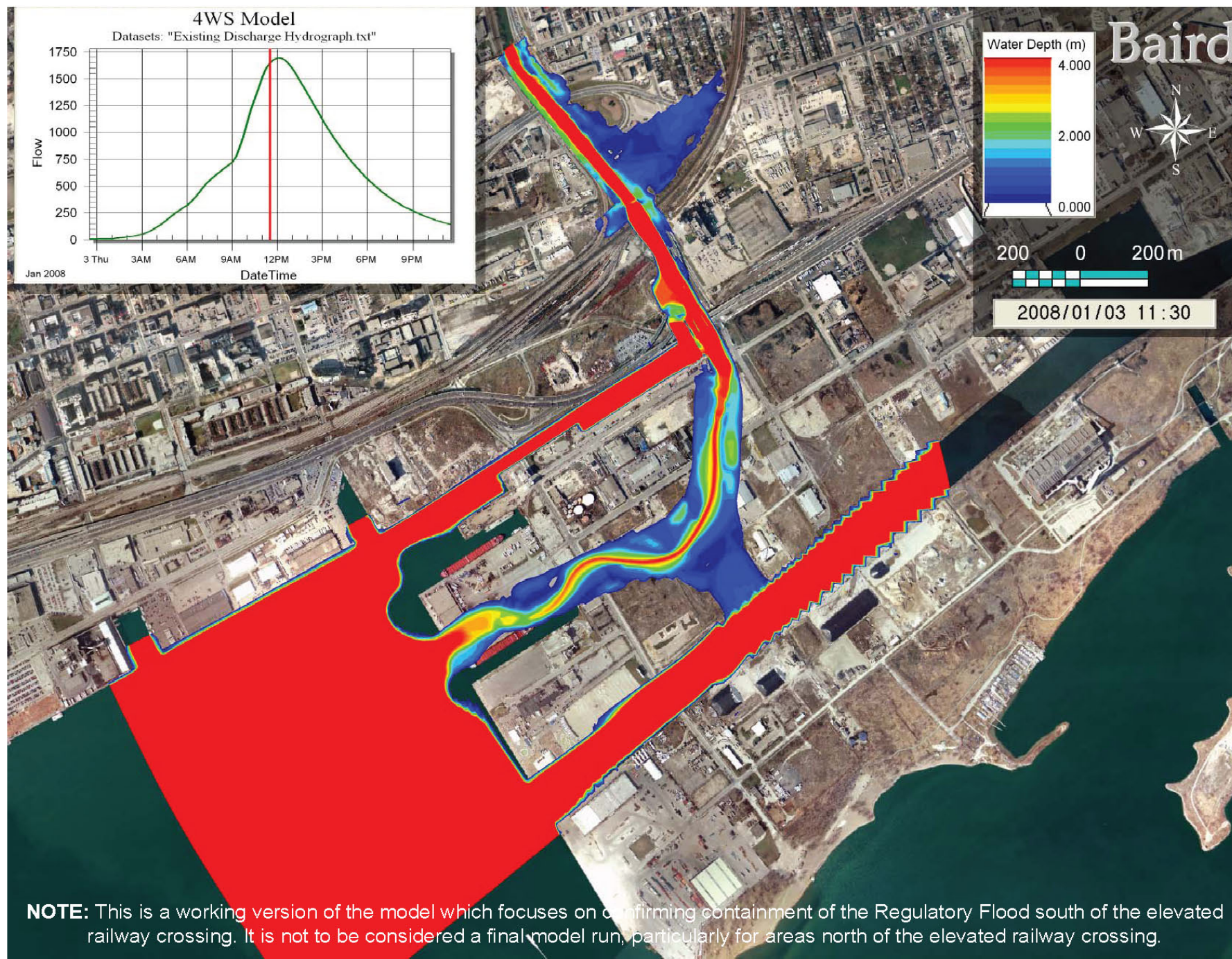
Modeled Flood Depths - Existing Conditions



NOTE: This model is still being refined and does not show full extent of flooding through the South Riverdale and Port Lands area.



Modeled Flood Depths - Preferred Alternative




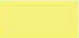

















NOTE: This is a working version of the model which focuses on confirming containment of the Regulatory Flood south of the elevated railway crossing. It is not to be considered a final model run, particularly for areas north of the elevated railway crossing.

Neighbourhoods



LEGEND

-  Wooded Prospect
-  Passive Use Lawn
-  Multiuse Recreation
-  Esplanade
-  Playground
-  Public Garden
-  Event Space
-  Water Access
-  Heritage Structure
-  Retail
-  LRT Stop
-  Bicycle Trail
-  School/Community Centre
-  Day Care
-  Environmental/Cultural Uses
-  Library
-  Special Commercial
-  Boat Launch
-  Small Boating (canoes, kayaks)



Draft Preferred Transit Network

Queens Quay



LEGEND

-  LRT Stop
-  Transit Line
-  Retail

Two Precincts of the Lower Don Lands

Each organized by a core public open space

- The **Keating Channel Precinct** Planning process is currently underway and is being presented today
- The **River Precinct** Plan will be developed at a later stage of the project



Overview



Victory
Soya Mills
Silos

Queens
Quay

East
Bayfront

Keating
Channel

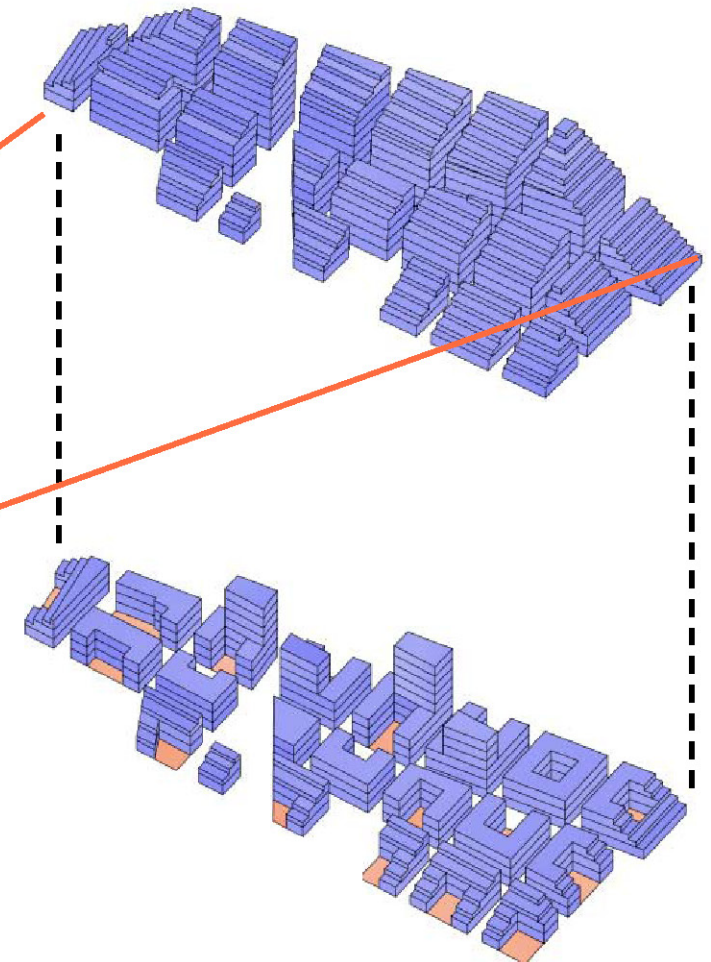
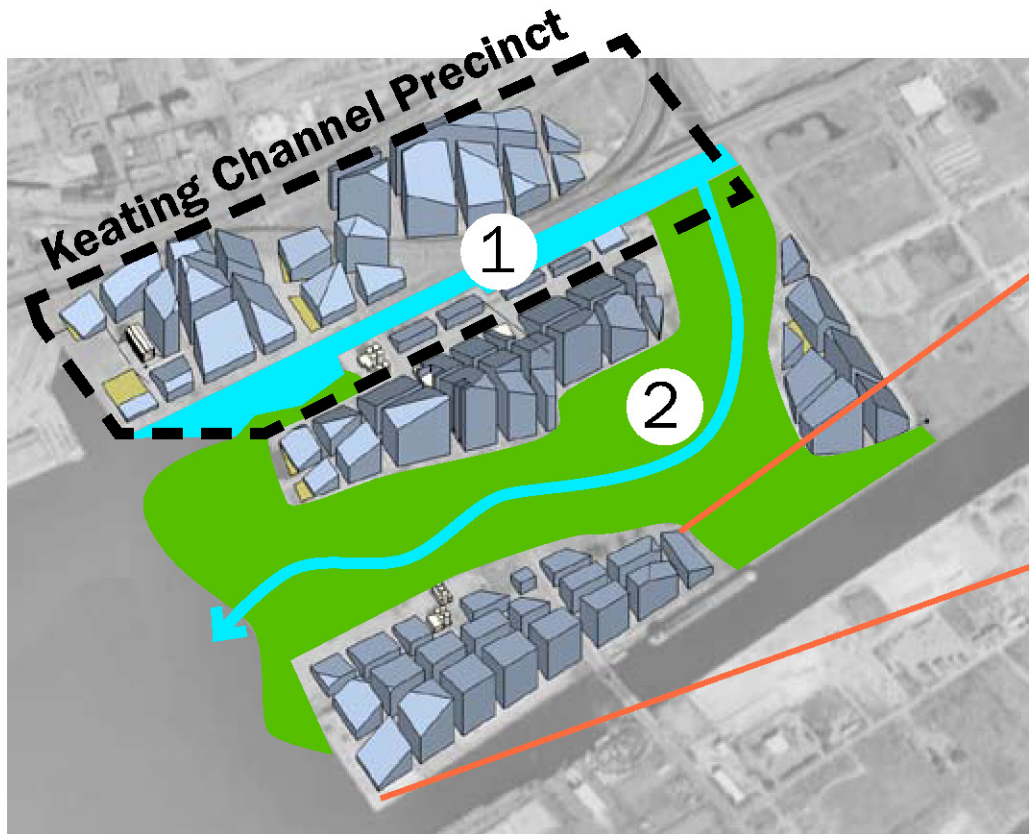
Promontory
Park

River Mouth

Daylight in Major Open Spaces

Conceptual Solar Exposure Planes, constraining building massing, were considered for the entire Lower Don Lands site.

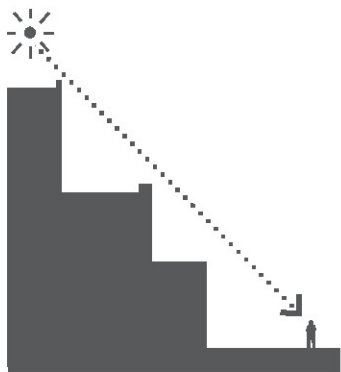
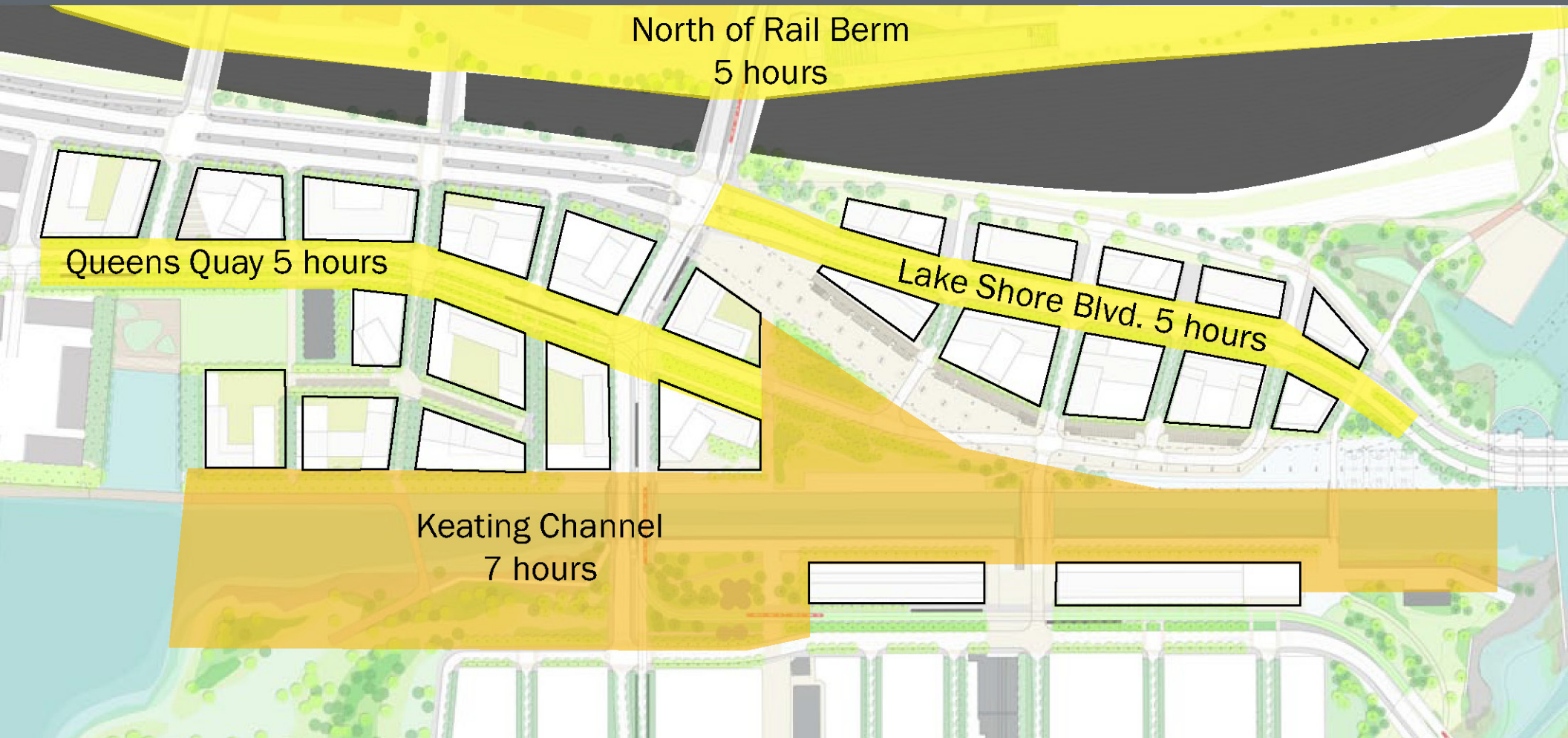
1. The Keating Channel and Esplanade (8 ha/20 ac)
2. The Don River Park System (40 ha/99 ac)



Built Form

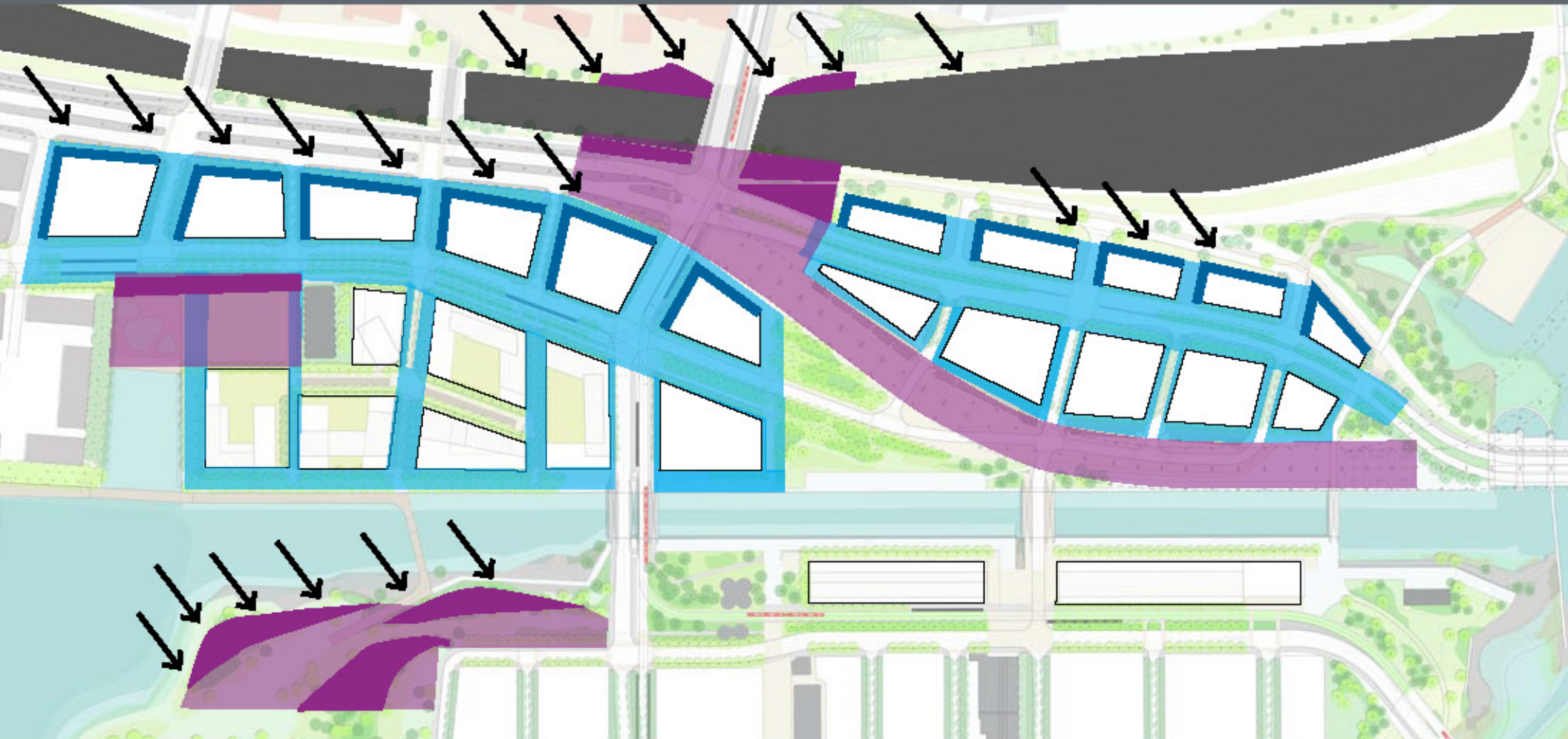


Daylight in the Public Realm



- Bosselman Criteria (Toronto/Berkeley, 1994) establishes pedestrian comfort through solar exposure planes
- Daily hours of sun measured on March 21st, Spring Equinox

Wind Mitigation and Massing



Wind Mitigation Measures Through **Landscape**
e.g. wind row

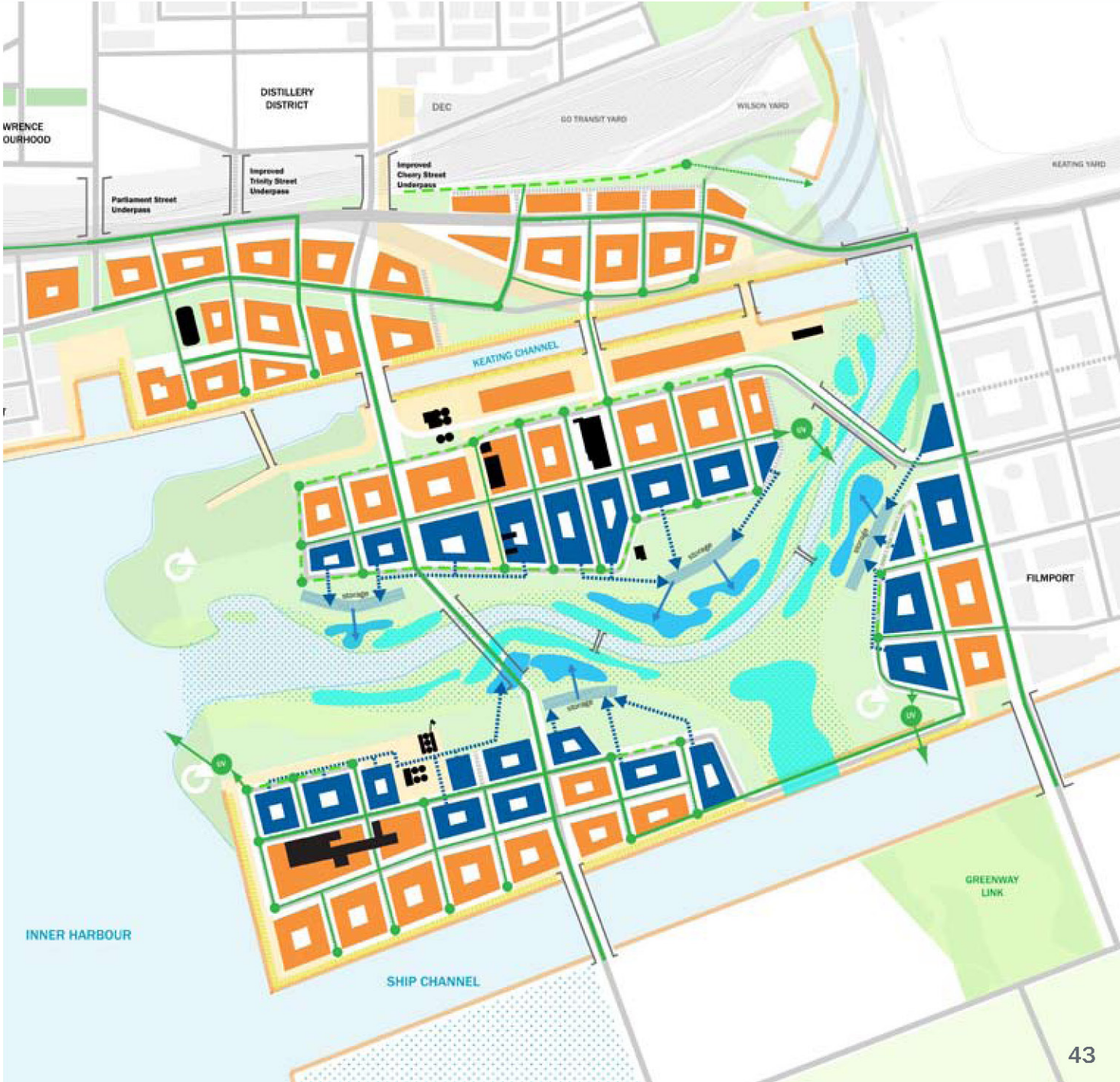
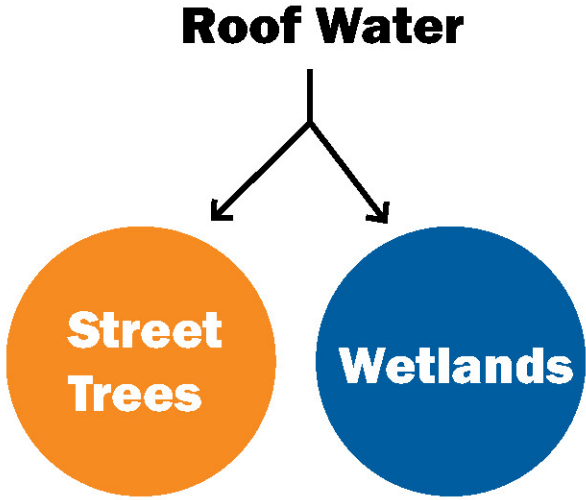


Wind Mitigation Measures Through **Built Form**
e.g. setback guidelines

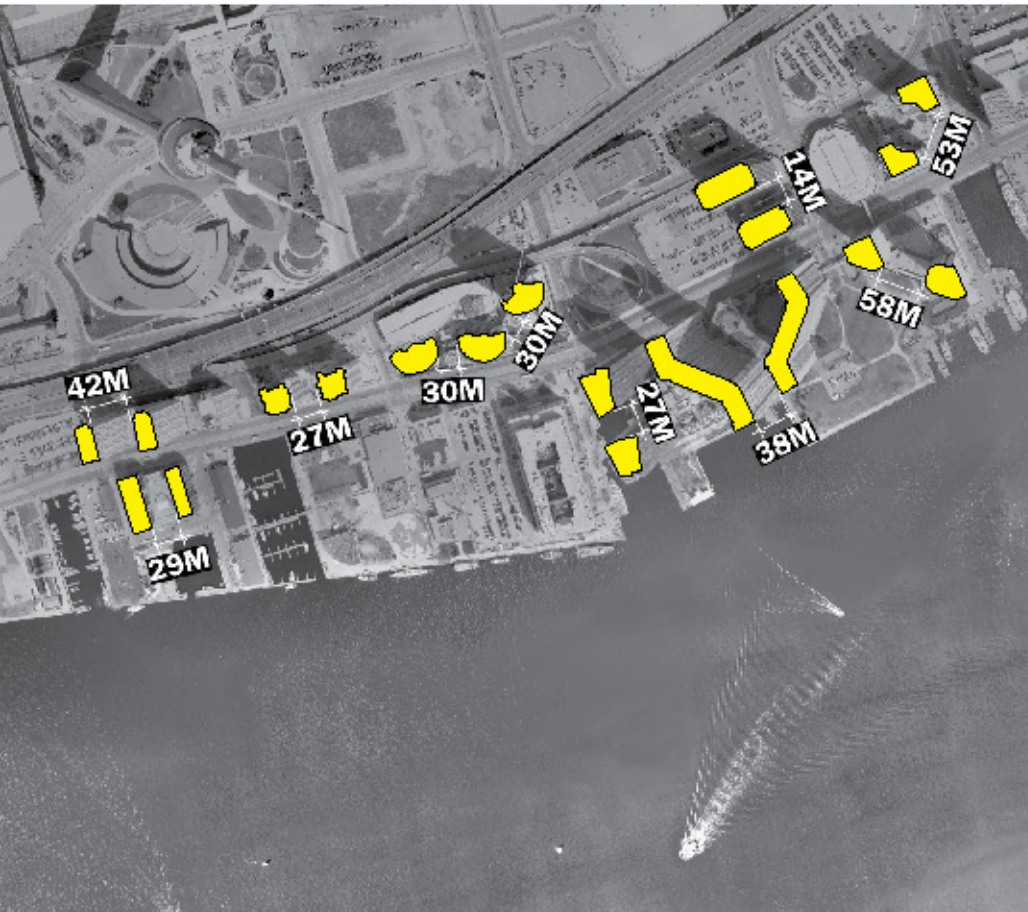
 Areas Benefiting from Mitigation Measures

 Areas Benefiting from Mitigation Measures

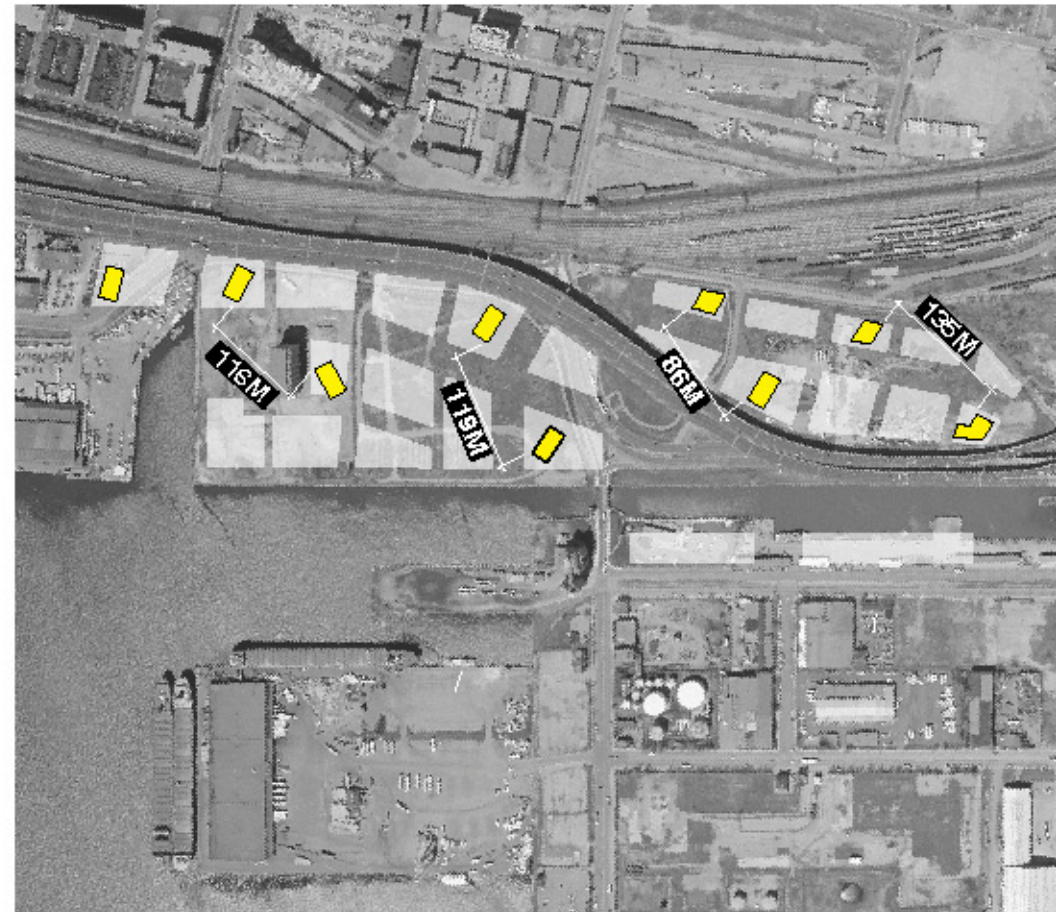
Stormwater Harvesting



Built Form: Tower Spacing



Central Waterfront Tower Distribution

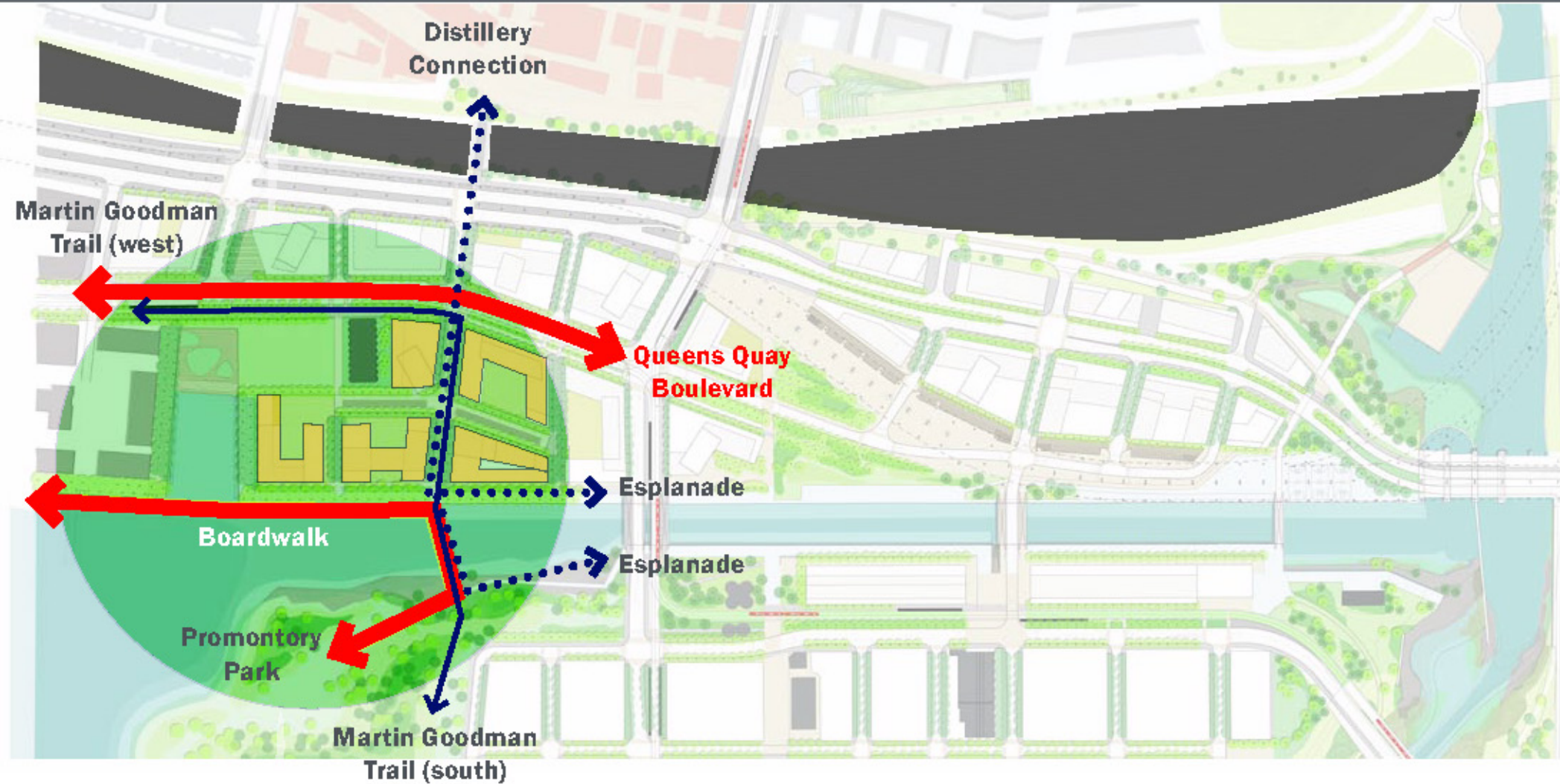


Keating Channel Precinct Tower Distribution

Creating the Public Landscape



Core Open Spaces: Channel Mouth



- Extend Queens Quay and Lake Shore Boulevard
- Turn water's edge promenade around the corner of the harbour

Channel Mouth: Trinity Street Bridge

2



Trinity Street

Promontory Park

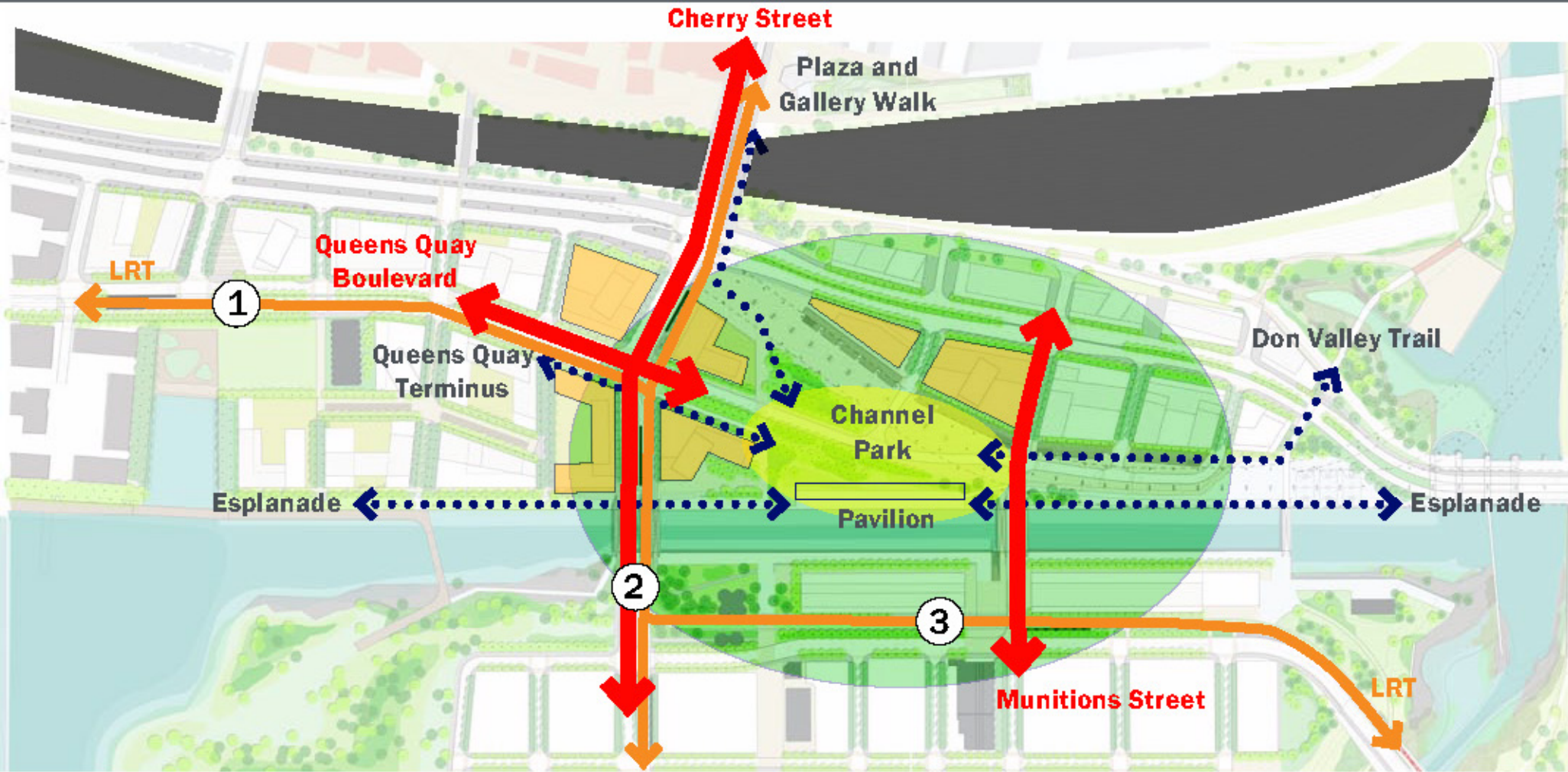
Walkway to Harbour

Rocky Beach

Overlook Areas

Martin Goodman Trail

Core Open Spaces: Channel Narrows



- Establish critical transit/vehicular link
- Activate pedestrian/bike collector point at channel edge
- Create park at centre of channel and terminus of Queens Quay

Cherry Street: View South Across Channel

2



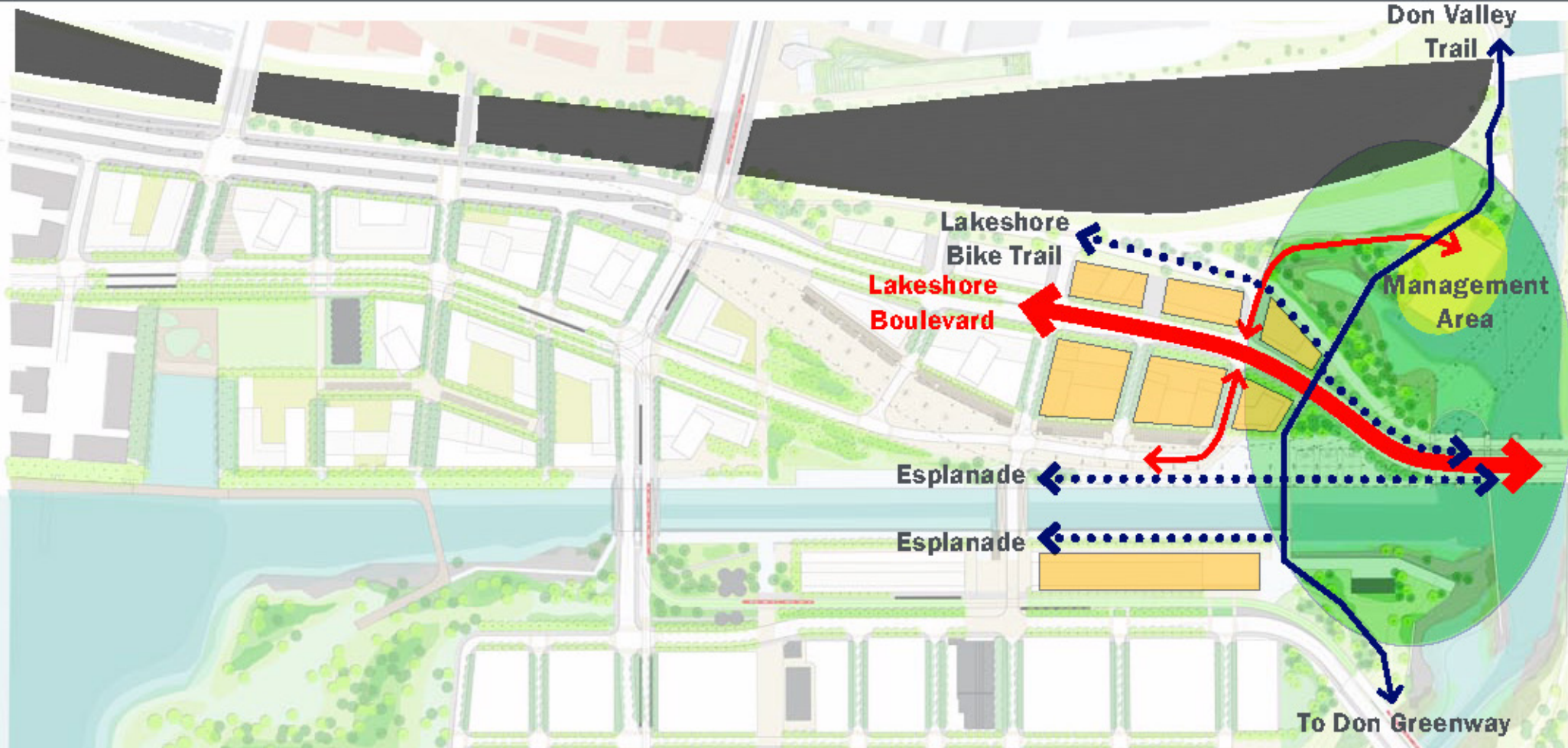
Essroc
Silos

Keating Channel

Cherry
Street

Stair from LRT
Platform

Core Open Spaces: Head of Channel



- Configure Lakeshore Boulevard as a 2-sided street
- Extend the relationship of the Don Valley Trail with the River
- Accommodate management area as required by the Don Mouth EA

Don Valley Trail: View Towards Don Narrows



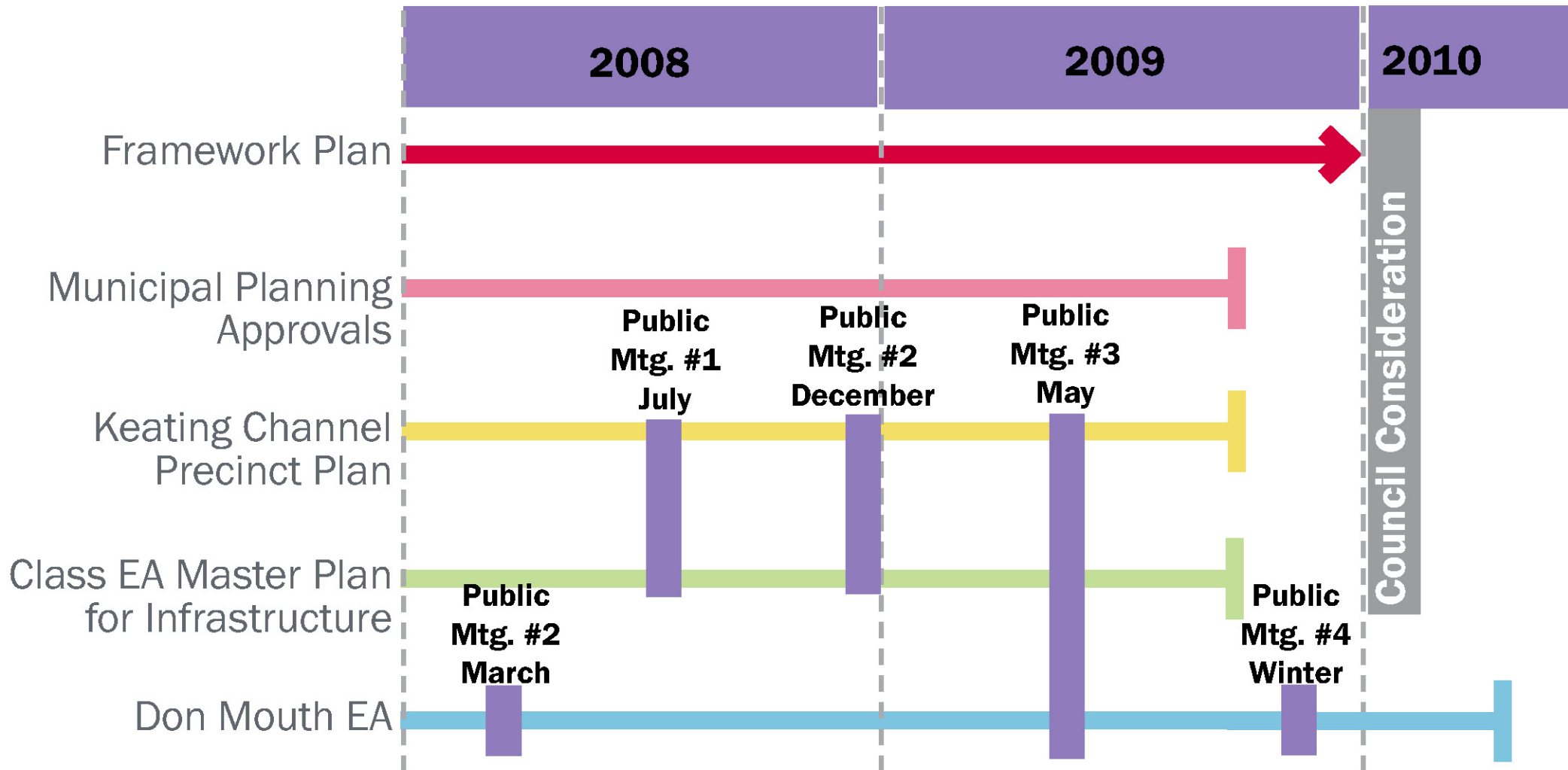
Management Area

Bike Bridge

Riverine Wetland

Don Valley Trail
Elevated Bikeway

Planning Process Recap/Update





Urban Channel: Keating Precinct Formed by City

