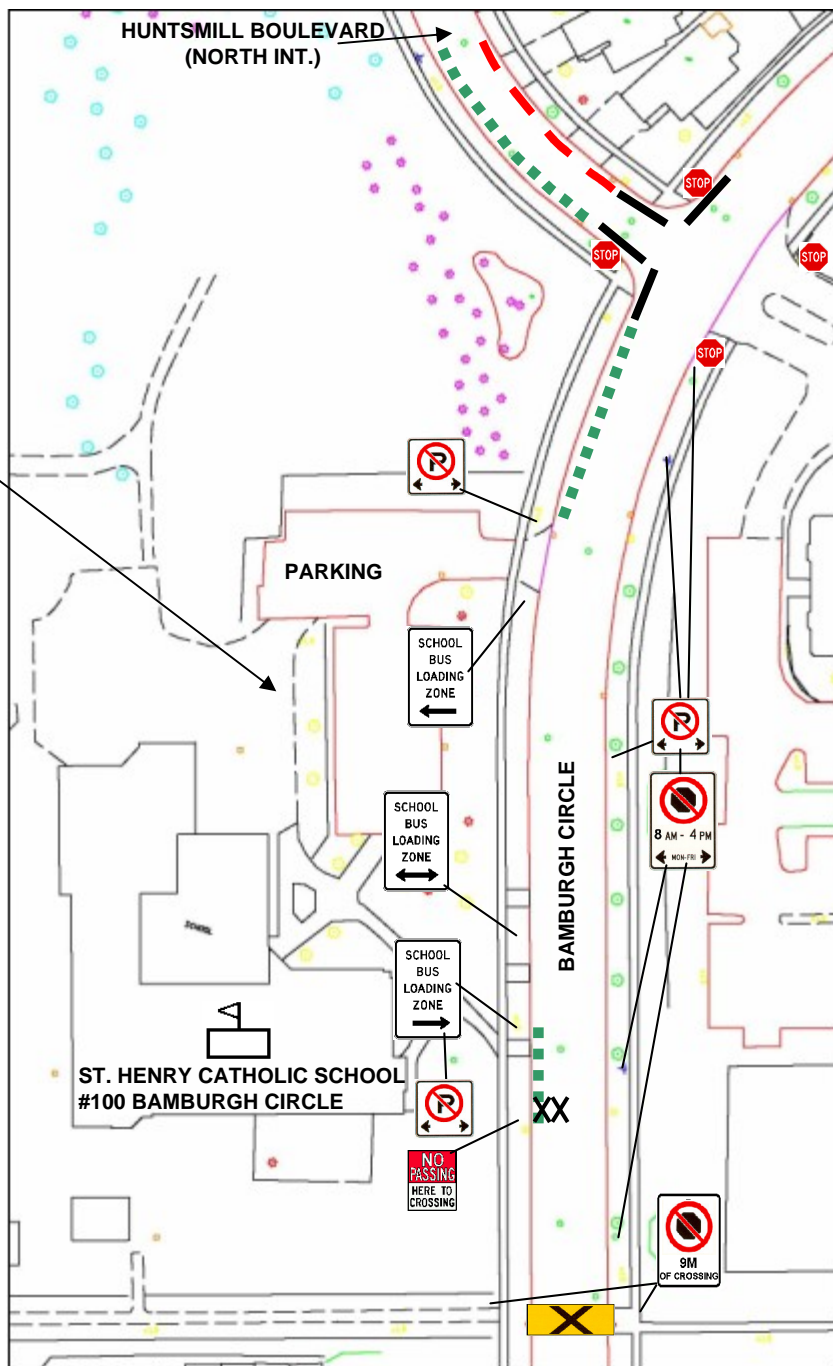
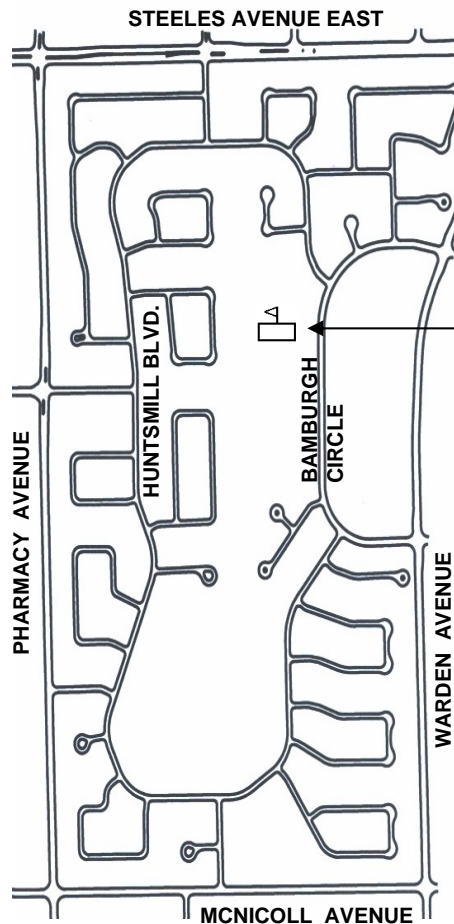


# KEY MAP

# AREA MAP



## LEGEND

ST. HENRY CATHOLIC SCHOOL

EXISTING STOP SIGN EXISTING PEDESTRIAN CROSSOVER (PXO)

EXISTING "SCHOOL BUS LOADING ZONE" SIGNS IN FRONT OF ST. HENRY CATHOLIC SCHOOL

EXISTING "NO STOPPING 8 AM - 4 PM, MON - FRI." SIGNS OPPOSITE SCHOOL SIDE

EXISTING "NO STOPPING 9M OF CROSSING" SIGNS AT PEDESTRIAN CROSSOVER (PXO) BOTH SIDES

EXISTING "NO PARKING ANYTIME" SIGNS BOTH SIDES

PROPOSED "NO PARKING ANYTIME" CORNER RESTRICTION

PROPOSED "30 MIN. PARKING 8AM-4PM MON-FRI"

PROPOSED "NO STOPPING 8AM-4 PM MON-FRI"



TRANSPORTATION SERVICES

TRAFFIC OPERATIONS  
Scarborough District

SCALE: *Not to scale*

DATE: *Jan. 2009*

DRAFTING: *FL*

## EXISTING SCHOOL BUS LOADING ZONE AND PARKING REGULATION SIGNS AND PROPOSED SIGNAGE IN FRONT OF ST. HENRY CATHOLIC SCHOOL

FILE NUMBER  
D08-3104690

ATTACHMENT  
4

WARD  
39