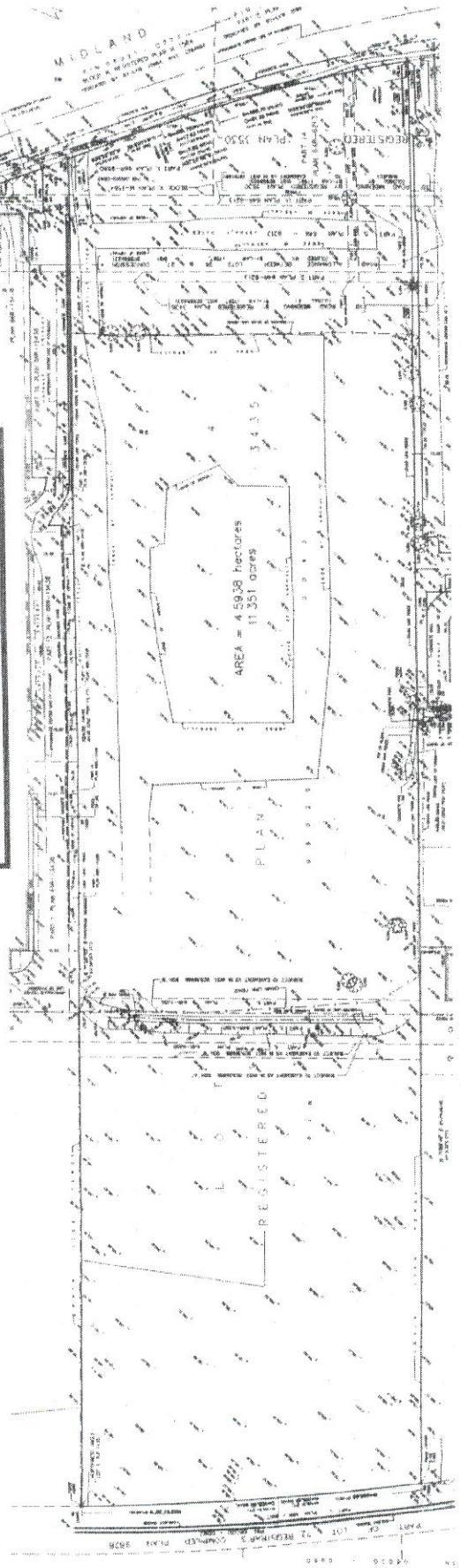
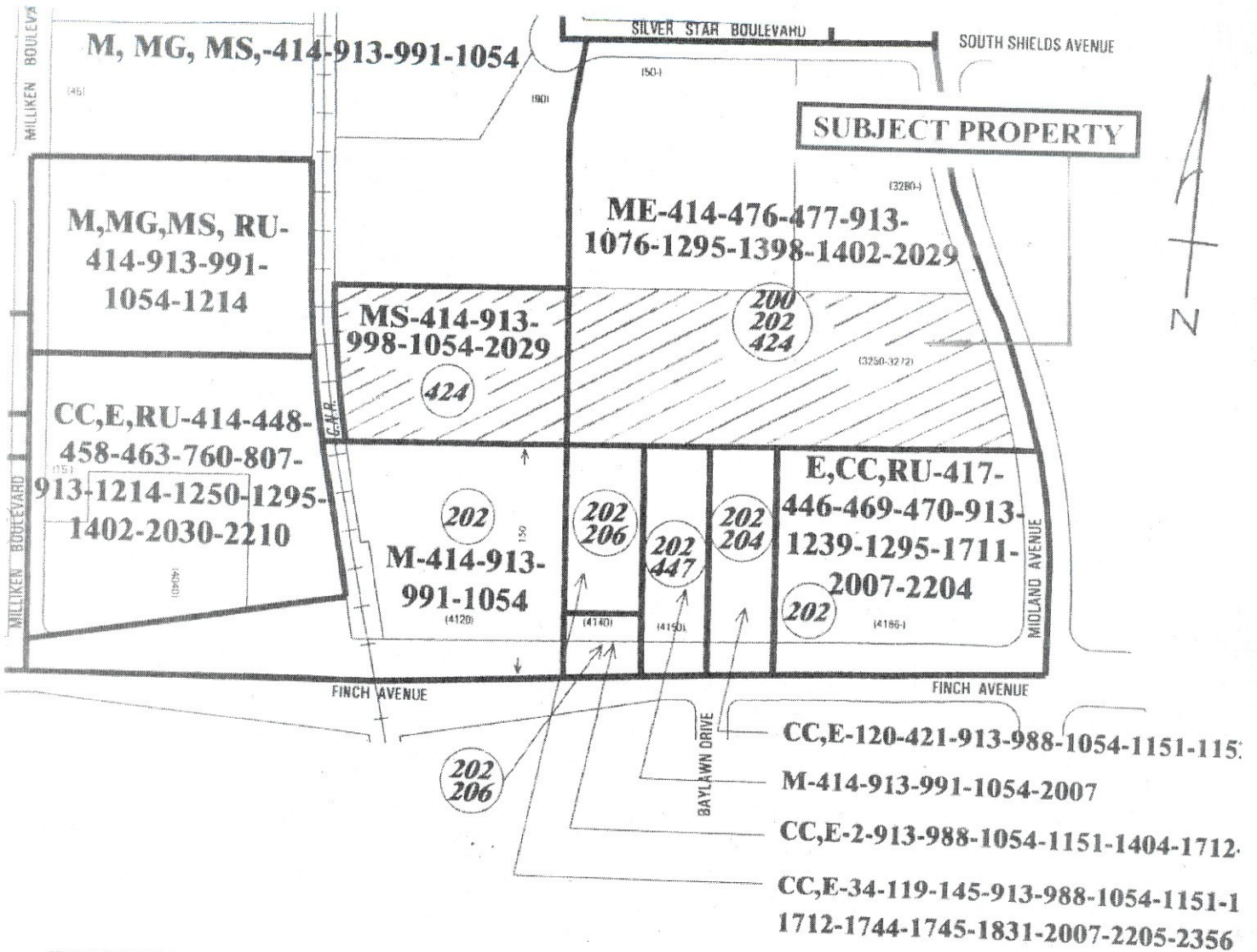


PROPOSED GROUND SIGN



Attachment 1 - SITE/SURVEY PLAN



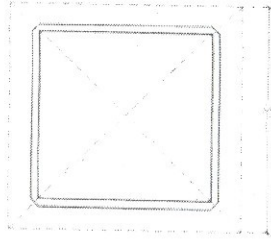
SUBJECT PROPERTY

- S-16-27-28-42-61-81-90-140
- S-19-41-80G-90-123-132
- S-1-28-42-61-81-82-90-93
- T-2-28-42-64-69-81-82-90-93
- T-15-27-28-42-64-69-90-123-140
- T-20A-42-72-90-123-132-141

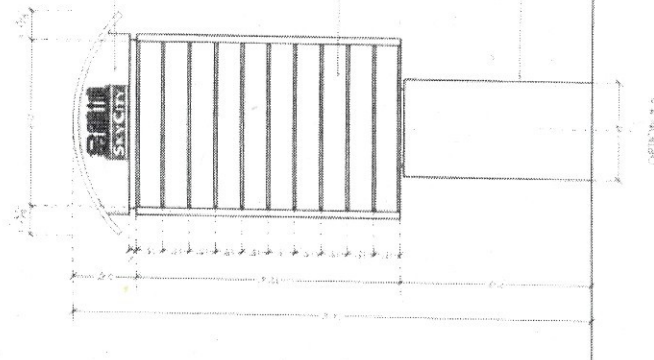
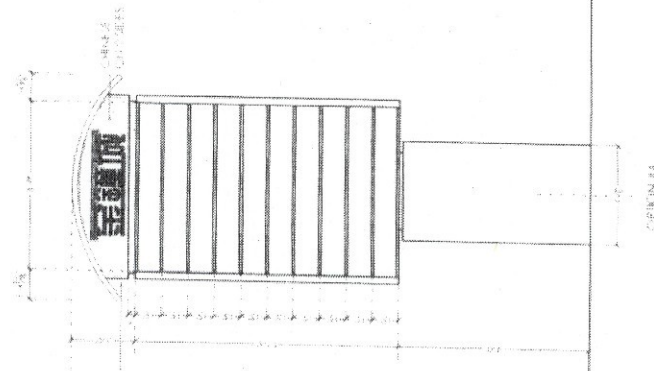
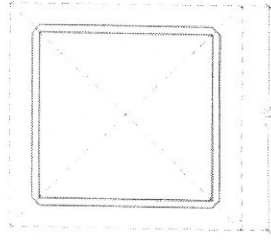


Attachment 2 – ZONING MAP

FLOOR PLAN #4



FLOOR PLAN #5



1. Material to be used for sign panel is to be confirmed by the contractor. The sign panel is to be fabricated and installed in accordance with the approved drawings. The sign panel is to be fabricated and installed in accordance with the approved drawings. The sign panel is to be fabricated and installed in accordance with the approved drawings.

2. The sign panel is to be fabricated and installed in accordance with the approved drawings. The sign panel is to be fabricated and installed in accordance with the approved drawings. The sign panel is to be fabricated and installed in accordance with the approved drawings.

3. The sign panel is to be fabricated and installed in accordance with the approved drawings. The sign panel is to be fabricated and installed in accordance with the approved drawings. The sign panel is to be fabricated and installed in accordance with the approved drawings.

OPTION #1

OPTION #2

OPTION #3

PYLON SIGN

SCALE = 1/8" TO 1'-0"

MIDLAND AVE. (3.2.5.5)
CITY OF TORONTO
(SCARBOROUGH)

Attachment 3 – GROUND SIGN DETAILS

