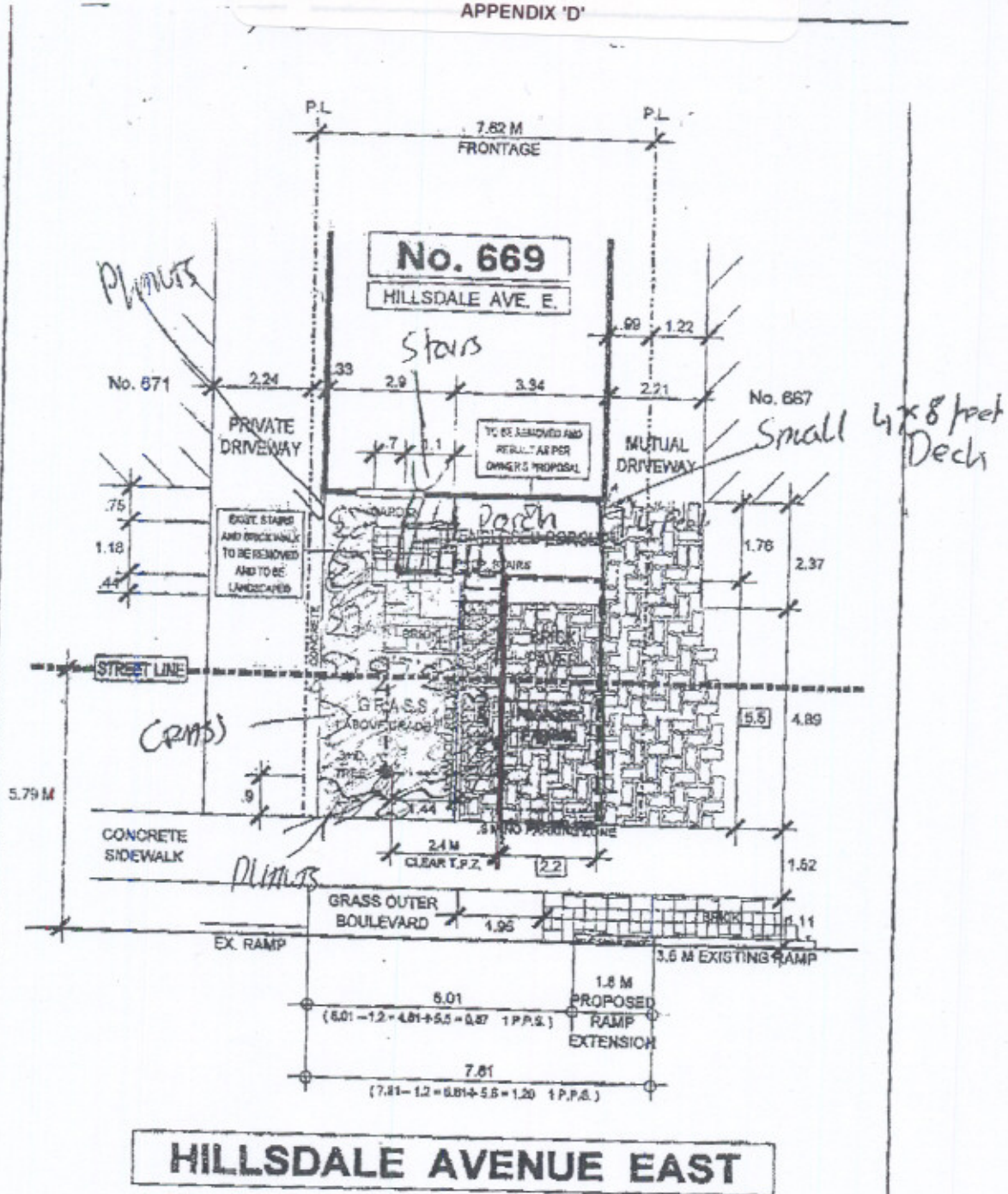




Front Yard Parking Appeal - 669 Hillside Avenue East

APPENDIX 'D'



HILLSDALE AVENUE EAST

		TRANSPORTATION SERVICES DIVISION TORONTO AND EAST YORK DISTRICT RIGHT OF WAY MANAGEMENT - OFF STREET PARKING					NORTH 	
FRONT YARD PARKING		CHAPTER 918			F.Y.P. - 91140			
TOTAL PARKING AREA ON STREET ALLOWANCE	6.7 M ²	PRIVATE PROPERTY			STREET ALLOWANCE			
		AREA M ²	%	CODE	AREA M ²	%	CODE	
TOTAL AREA		25.1	100		32.1	100		
LANDSCAPED OPEN SPACE		18.0	64	50% min.	21.8	69	50% min.	
PAVED AREA		9.1	36	50% max.	10.5	31	50% max.	
SOFT LANDSCAPING		12.6	79	75% min.	16.6	76	75% min.	
DRAWN BY: R. MUNSON		DATE: JUNE 10 th 08			SCALE: 1:100			
							REVISIONS	
							Date	By
							JUNE 17 th 08	R.A.M.
							JUNE 23 rd 08	R.A.M.