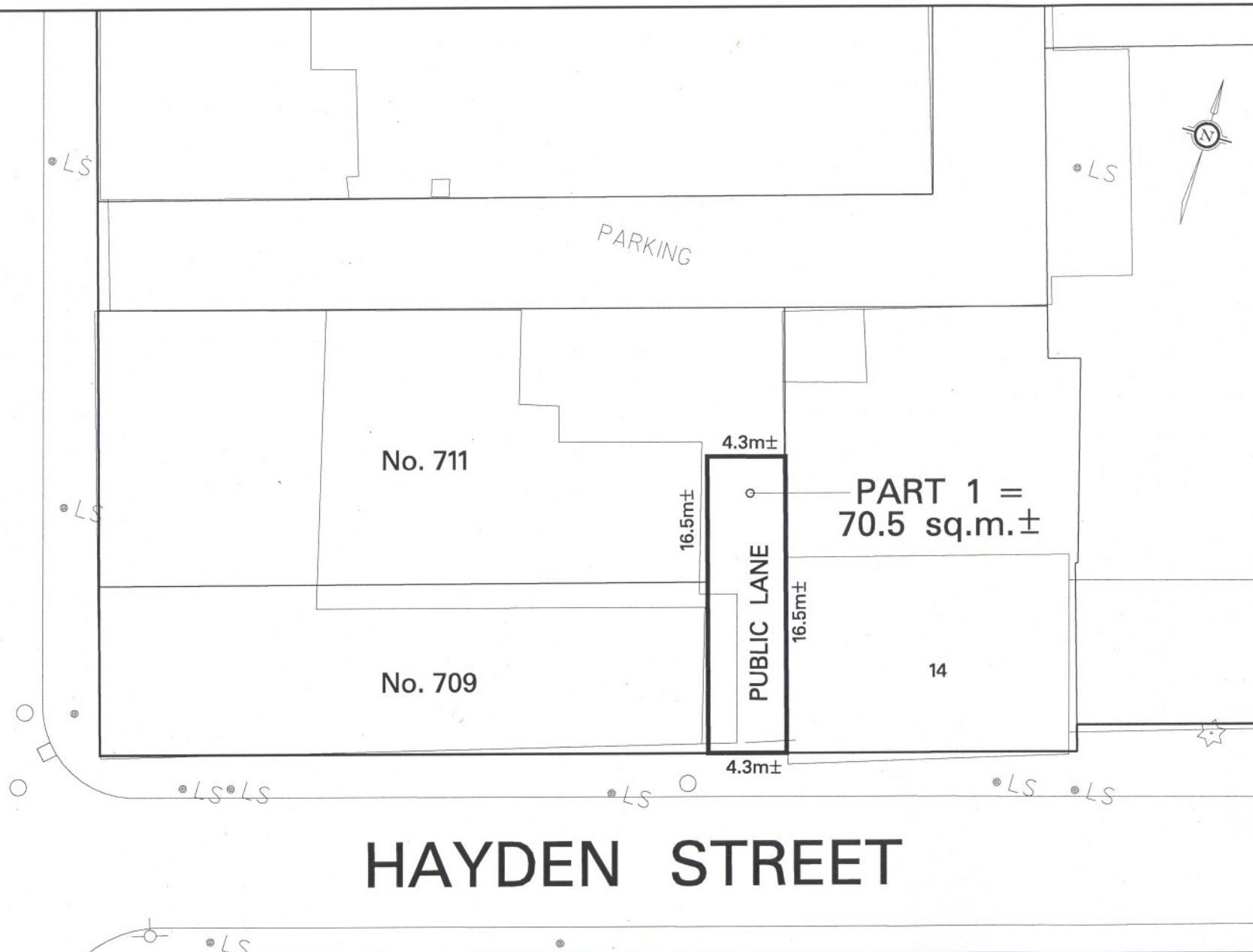


YONGE STREET



HAYDEN STREET

Toronto

TECHNICAL SERVICES DIVISION
SURVEY & MAPPING SERVICES

NOTE:

THIS SKETCH HAS
BEEN COMPILED FROM
OFFICE RECORDS.

NOT TO SCALE

WARD 27 - TORONTO CENTRE-ROSEDALE
DATE: OCT. 9, 2007

PROPERTY INFORMATION SHEET
CITY OWNED LAND
PROPOSED CLOSURE AND SALE OF THE LANE
ABUTTING Nos. 709 AND 711 YONGE STREET

SKETCH No. PS-2007-248