

Redevelopment Update

Newsletter for West Acres Seniors Centre

What is a Campus of Care?

The Centre for Healthy Aging defines a campus of care as being “co-located facilities that operate as a single community”. Studies show that seniors who are engaged with their communities stay healthier longer. The vision for the redevelopment of Kipling Acres includes the development of a “community hub” or “campus of care” to integrate services and expand ways that co-located services can better serve the community. The redevelopment will embed principles in creating age-friendly communities, with the guidance of World Health Organization and International Federation of Ageing resources.



For any inquiries, please contact
Anne Marie Mohler,
Administrator at:
416.392.2301 or
amohler@toronto.ca



Long-Term Care Design Standards & Redevelopment Strategy

Since Kipling Acres opened in 1959, a lot has changed about the needs of residents and the way long-term care is provided. In 1999, the Ministry of Health and Long-Term Care (MOHLTC) published the *Long-Term Care Facility Design Manual*, to guide the construction of new long-term care homes, so that they were less institutional, more homelike and designed to enhance quality of life for people who live there. The division's newest home, Wesburn Manor, was built to these standards.

In 2007, the provincial government announced plans to redevelop 35,000 older long-term care beds in five phases over the next 10-15 years. The MOHLTC plans to redevelop all B and C class homes to bring them in-line with the current standard.

In 2009, MOHLTC updated the *Long-Term Care Home Design Manual* to further promote innovative design in long-term care homes in Ontario. The new design standards encourage the creation of environments that are age-friendly and make it possible to respond positively and appropriately to the diverse physical, psychological, social and cultural needs of all long-term care home residents.

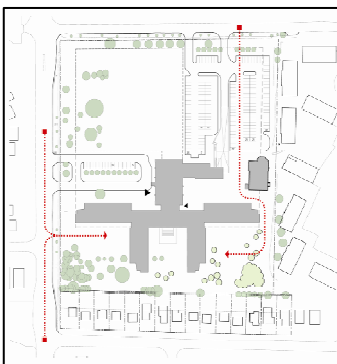
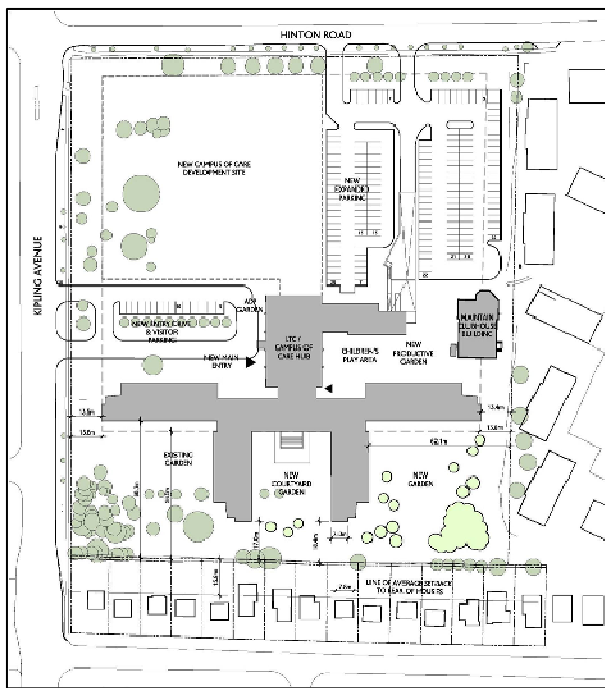
Kipling Acres was the division's highest priority for redevelopment and presented a unique opportunity to introduce the campus of care concept as an improved service delivery model. The new Kipling Acres will be designed to meet (and in many cases exceed) the new standards. The input and feedback being received from all stakeholders is further enhancing the design, so that the new home and the future campus will be a great place to live, visit and work!

Kipling Acres Community Reference Group

A **Community Reference Group (CRG)** for the Kipling Acres redevelopment project began meeting in January 2010, to provide community and stakeholder input into the development of a site plan and a long-term care home design that will meet the needs of future residents. We are also seeking ideas from the CRG regarding the needs of the local community, for planning for the anticipated future Phase 2 of the redevelopment. The group is currently comprised of representatives from the community, local service providers and Kipling Acres stakeholders.

Opportunities and priorities suggested by the CRG to date include:

- Seniors wellness centre with a holistic approach
- Seniors' housing (independent and supportive)
- Integration of library services
- Integration of some public health services
- Adult and children's day programs
- Keeping families together – on a single site
- Specialized seniors' programming for mental health & dementia care issues
- Youth/young adults integrated into community
- Creating an “inviting” structure and an integrated community
- General use space for community
- Small business integration; e.g. coffee shop, pizzeria or deli



Above: The new site plan and redesigned footprint of Kipling Acres

Left: Proposed access points to the site

Below: Schematic drawing of "inter-generational courtyard"

Architect's Update for August 2010

- After the last meeting with West Acres, a goal was established to retain the Recreation Centre on the site throughout the construction of the new home and have it become an integral piece of the campus of care vision.
- Removing the centre would impact negatively on the seniors' club membership and would remove a program that would benefit the campus.
- Architects went back to the drawing board to redesign the home to accommodate the Seniors Centre.
- A section the hub now extends towards the recreation centre. This new extension accommodates the Children's day care and redesigned loading dock and ramp.
- Improved access to parking for the Senior Centre.
- Redesign creates a courtyard bordered by the West Acres Recreation Centre, Children's Day Care, Adult Day Program and a portion of the long-term care home.
- A secondary access point to the site will be established on Kipling Ave, likely utilizing the existing entrance. The primary access will still be on Hinton Road leading to the likely removal of the lawn bowling field.

