

**SCHEDULE 1**  
**LANDS TO BE CONVEYED**  
**TO CITY**  
 NOVEMBER 04, 2009

AREAS  
 CONVEYED AREA 1740.0 m<sup>2</sup>

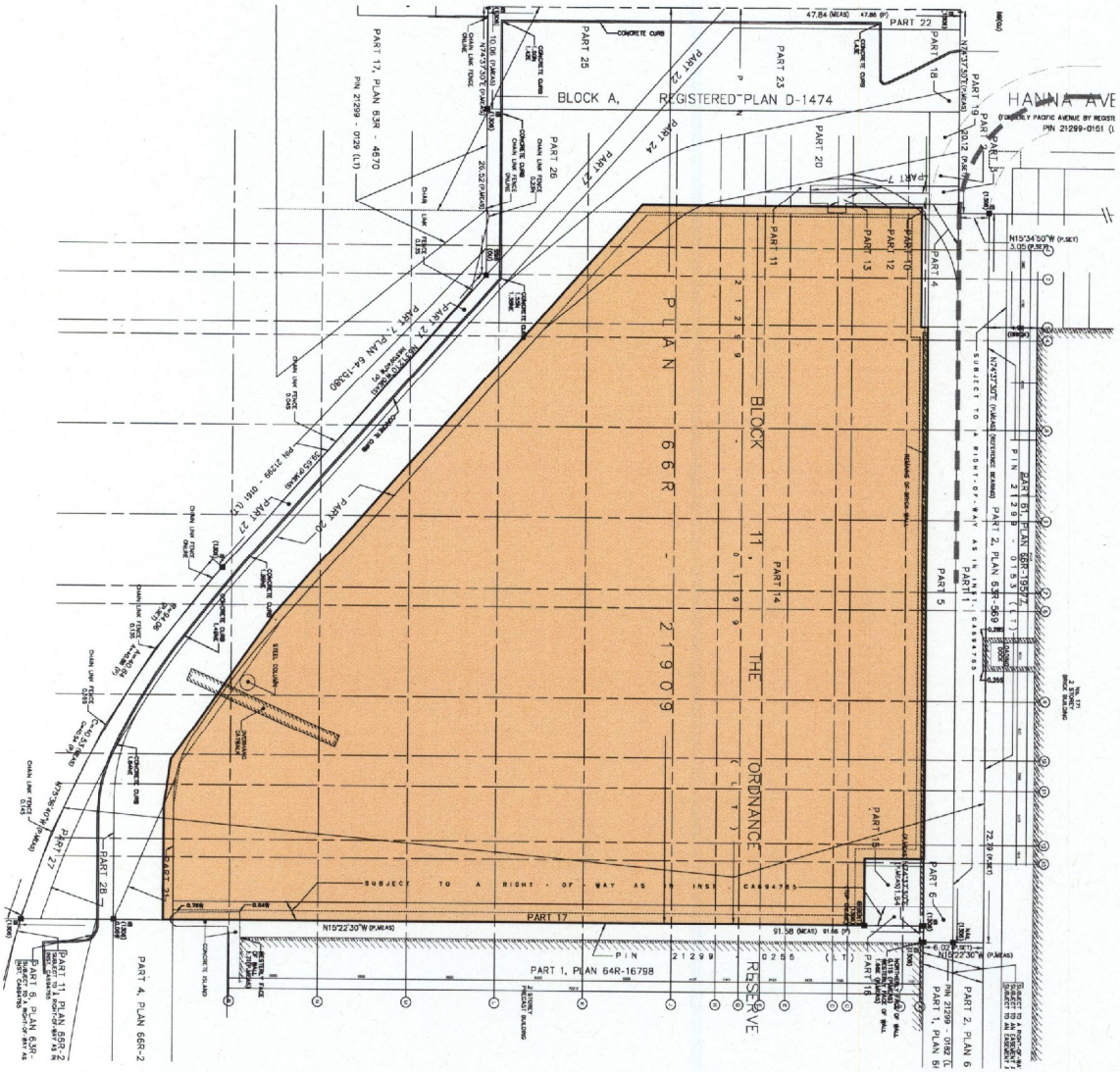
LIBERTY MARKET LOFTS  
 5 HANNA AVENUE, TORONTO, ONTARIO

LIFETIME URBAN DEVELOPMENT GROUP  
 SCHEDULE 1

**WALLMAN ARCHITECTS**  
 30 BURNHAM STREET, SUITE 202  
 TORONTO, ONTARIO M5V 2C3  
 T 416 340 1870  
 F 416 340 1871  
 INFO@WALLMANARCHITECTS.COM

PROJECT NORTH

Copyright of this drawing is reserved by the Architect. The drawing and all drawings and the information contained hereon are to be used only in connection with the project and the information contained hereon is to be used only in connection with the project and the information contained hereon is to be used only in connection with the project. This Contract is to vary all existing conditions and drawings.



**SCHEDULE 2**

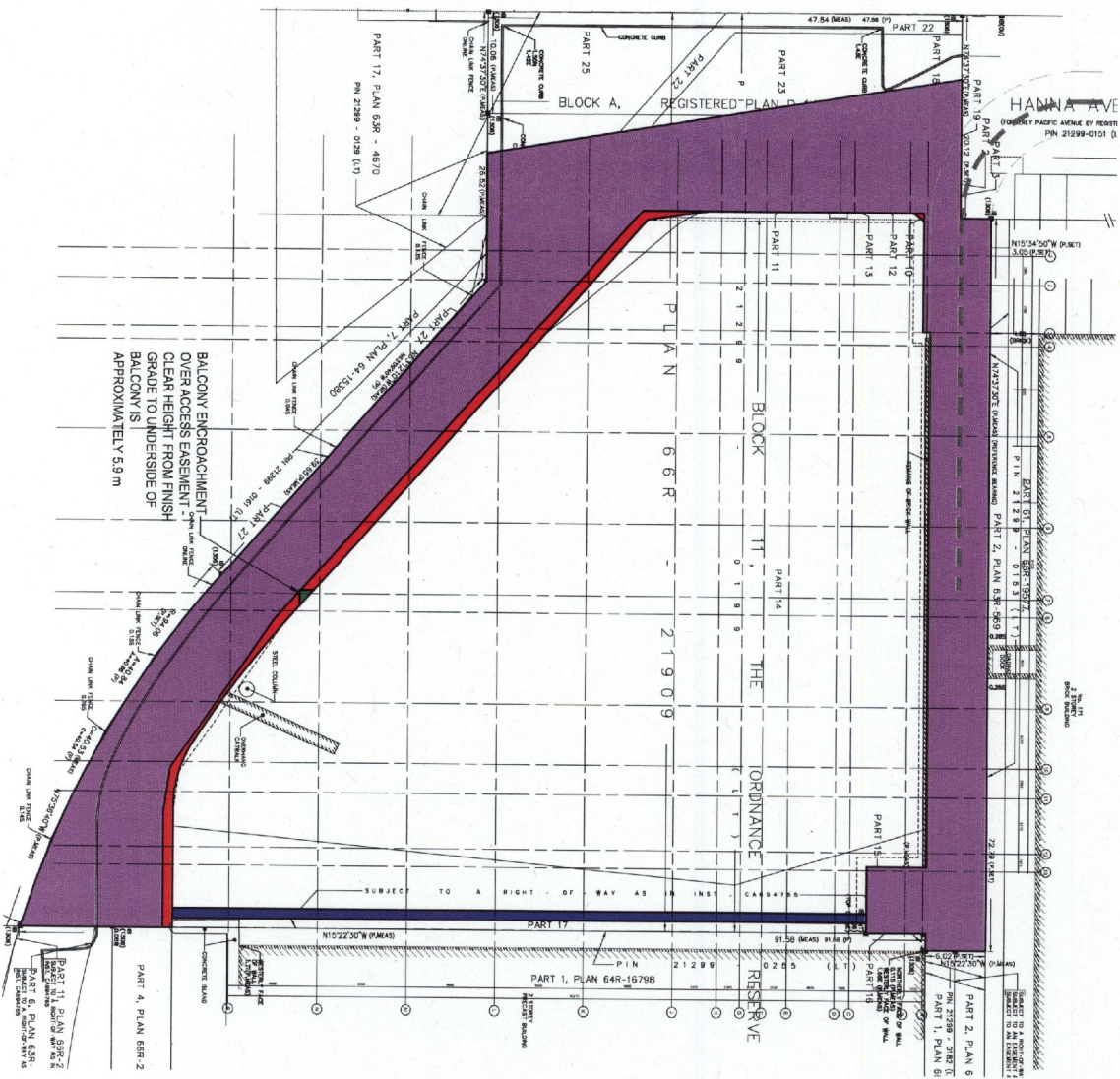
**AREAS OF EXCAVATION  
AND REMEDIATION**

NOVEMBER 04, 2009

AREAS  
AREA OF CONSTRUCTION 4180.0 m<sup>2</sup>

PROJECT  
LIBERTY MARKET LOFTS  
5 HANNA AVENUE, TORONTO, ONTARIO  
CLIENT  
LIFETIME URBAN DEVELOPMENT GROUP  
TITLE  
SCHEDULE 2

PROJECT NORTH  
WALLMAN ARCHITECTS  
30 DUNDAS STREET, SUITE 202  
TORONTO, ONTARIO M5G 2C3  
416 340 1871  
416 340 1871  
www.wallmanarchitects.com  
CONSTRUCTION DOCUMENTS PREPARED BY THE ARCHITECT. THE DESIGN, SPECIFICATIONS, DRAWINGS, AND PERMITS OBTAINED THEREIN, MAY NOT BE REPRODUCED OR TRANSMITTED IN ANY FORM OR BY ANY MEANS, ELECTRONIC OR MECHANICAL, INCLUDING PHOTOCOPYING, RECORDING, OR BY ANY INFORMATION STORAGE AND RETRIEVAL SYSTEM, WITHOUT THE WRITTEN PERMISSION OF THE ARCHITECT.



**SCHEDULE 3**

**ABOVE AND BELOW GRADE EASEMENT / ENCROACHMENT**

NOVEMBER 04, 2009

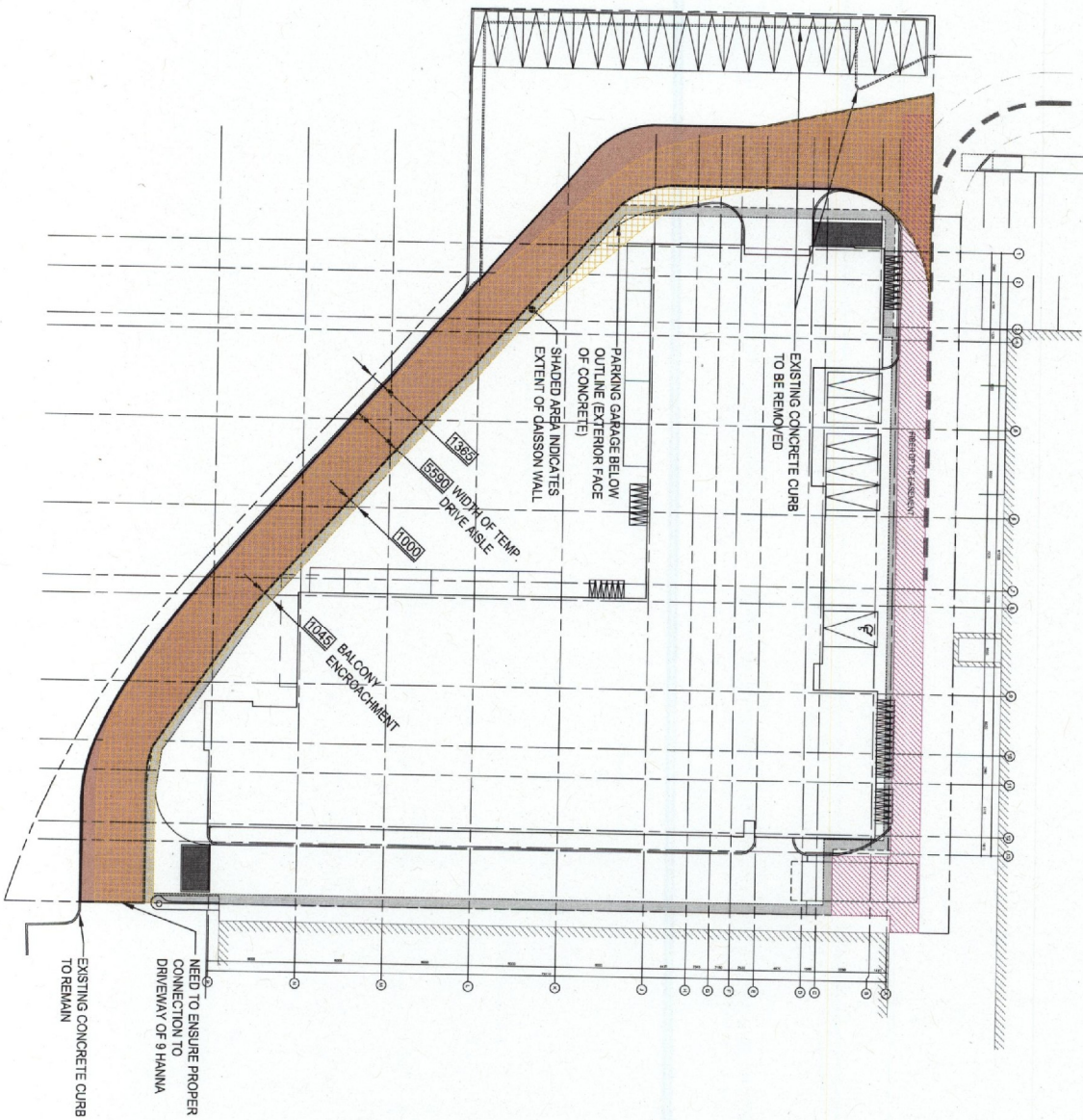
- A** ABOVE AND BELOW GRADE CONVEYANCE
- B** ABOVE GRADE CONVEYANCE
- C** BELOW GRADE ENCROACHMENT
- D** AREA WITH 5.9% HEIGHT RESTRICTION

AREAS	m <sup>2</sup>
ABOVE AND BELOW GRADE CONVEYANCE	1659.5
ABOVE GRADE CONVEYANCE	80.5
BELOW GRADE ENCROACHMENT	70.0
AREA UNDER HEIGHT RESTRICTION	1.1%

LIBERTY MARKET LOFTS  
 5 HANNA AVENUE, TORONTO, ONTARIO

LIFETIME URBAN DEVELOPMENT GROUP  
 SCHEDULE 3

**WALLMAN ARCHITECTS**  
 30 Duran Street, Suite 202  
 Toronto, Ontario M5V 2C3  
 T 416 540 1870  
 F 416 540 1871  
 info@wallmanarchitects.com  
 Project North  
 Copyright of the drawings is reserved by the architect. The drawings and all drawings and information contained therein, and the reproduction in whole or in part without prior written permission of the architect. Drawings are made for the project and are not to be used for any other project without the written consent of the architect. The architect is not liable for any errors, omissions, and omissions.



**SCHEDULE 4**  
 TEMPORARY SURFACE LANE  
 DURING CONSTRUCTION  
 NOVEMBER 04, 2009

- EXISTING 6m ACCESS EASEMENT
- FIBER OPTIC EASEMENT
- TEMPORARY SURFACE LANE DURING CONSTRUCTION
- CAISSON WALL

project  
 LIBERTY MARKET LOFTS  
 5 HANNA AVENUE, TORONTO, ONTARIO

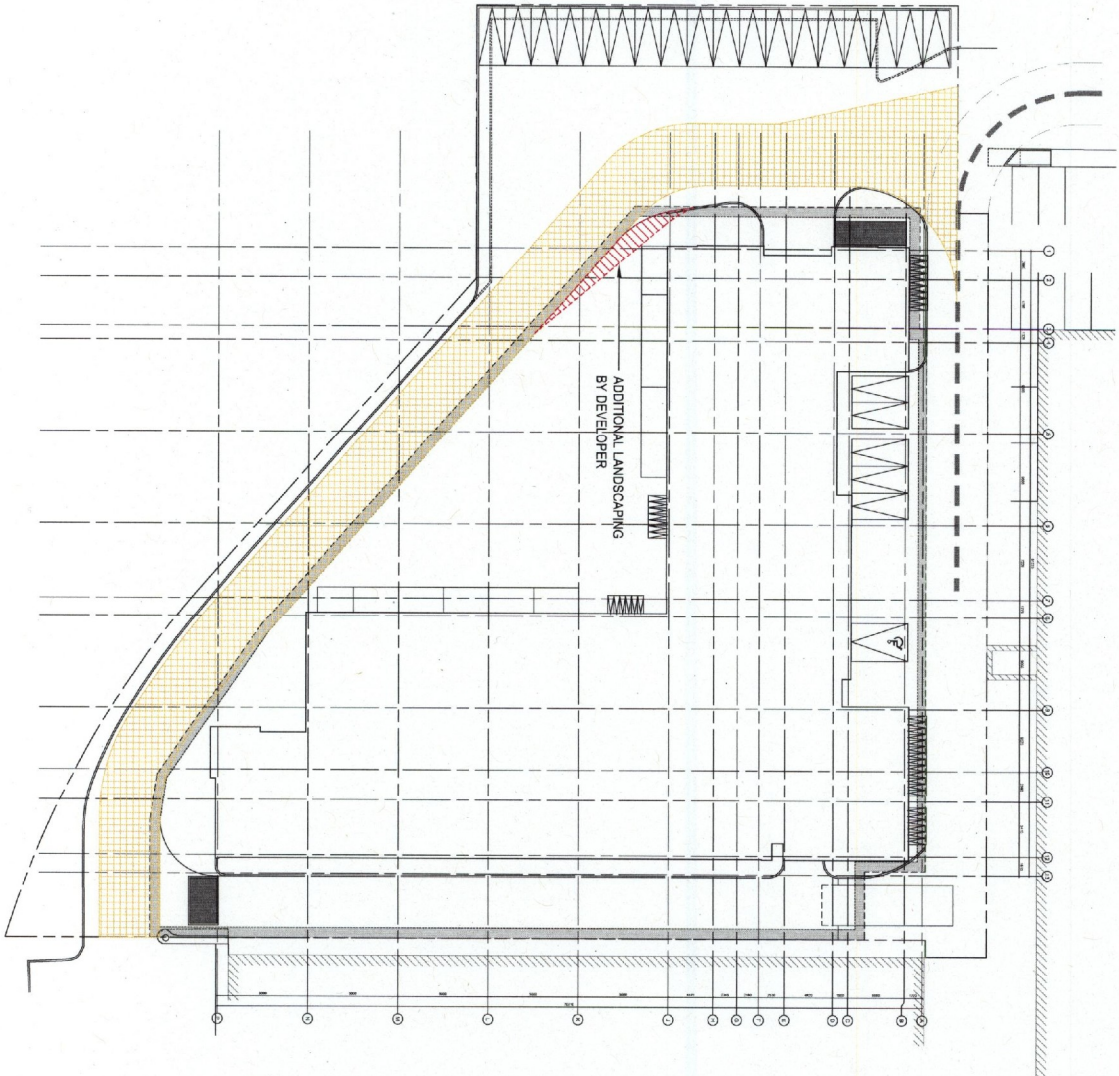
client  
 LIFETIME URBAN DEVELOPMENT GROUP

title  
 SCHEDULE 4

project north

**WALLMANARCHITECTS**  
 30 Dundas Street, Suite 202  
 Toronto, Ontario M5V 2C3  
 1 416 340 1870  
 info@wallmanarchitects.com  
 www.wallmanarchitects.com

Copyright of this drawing is reserved by the Architect. The drawings, and all associated documents are instruments of service by the Architect. The drawings shall not be used for any other purpose without the written permission of the Architect. Changes are not to be called for construction. The Contractor is to verify all existing conditions and dimensions.



**SCHEDULE 5**  
 ADJUSTMENT TO PATH OF  
 EXISTING 6M ACCESS  
 EASEMENT  
 NOVEMBER 04, 2009

ADJUSTED 6m  
 ACCESS EASEMENT  
 CAISSON WALL

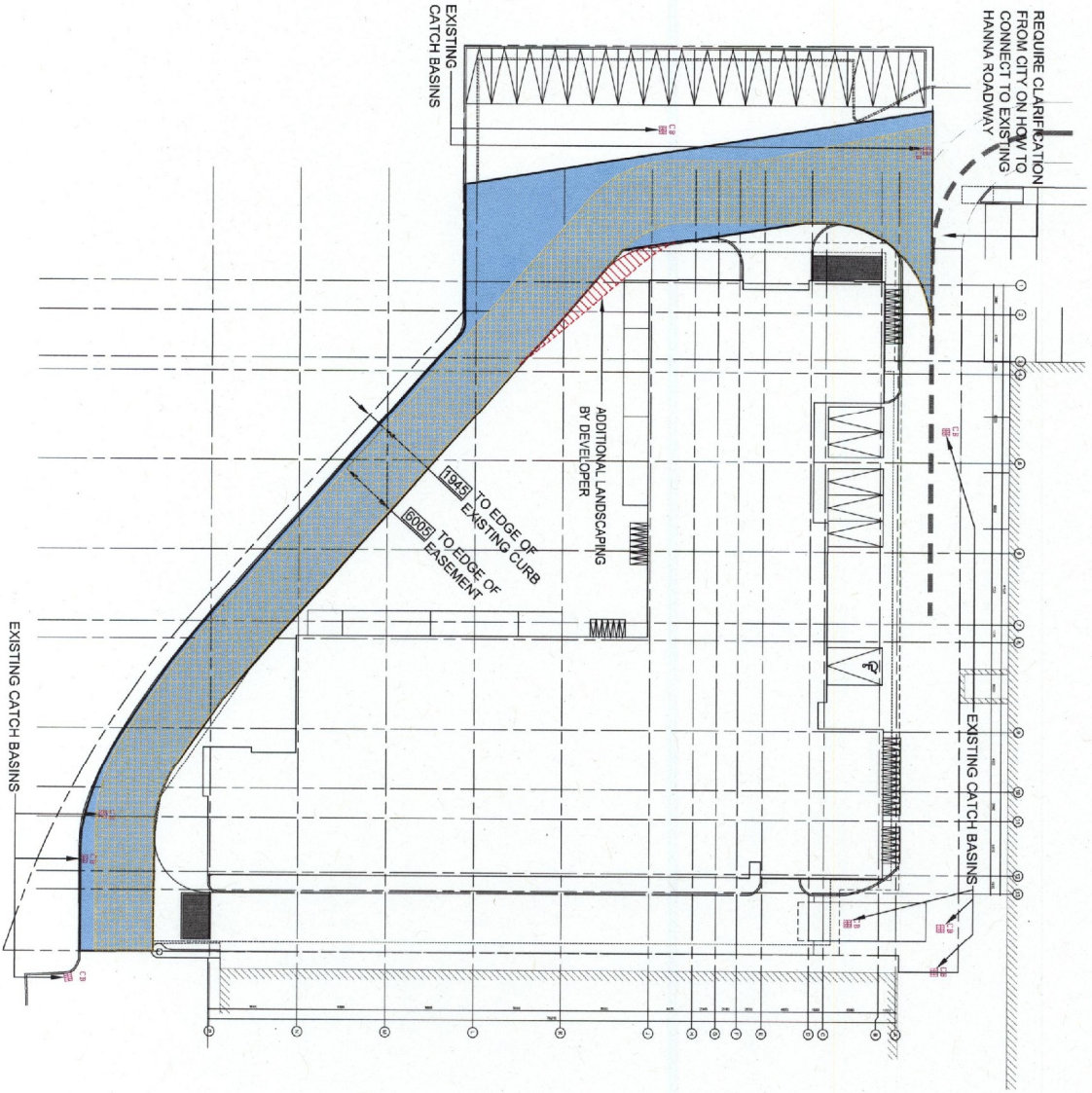
project  
**LIBERTY MARKET LOFTS**  
 5 HANNA AVENUE TORONTO, ONTARIO

client  
**LIFETIME URBAN DEVELOPMENT GROUP**



title  
**SCHEDULE 5**

**WALLMAN ARCHITECTS**  
 30 Dundas Street, Suite 202  
 Toronto, Ontario M5G 1R7  
 416 940 1870  
 416 940 1871  
 info@wallmanarchitects.com  
 www.wallmanarchitects.com

Project north  
 The drawings are prepared by the Architect. The  
 drawings and the information contained therein, may not be reproduced or  
 transmitted in any form or by any means, electronic, mechanical, photocopying,  
 recording, or by any information storage and retrieval system, without the  
 prior written permission of the Architect. The Contractor is to verify all existing  
 conditions and dimensions.



**SCHEDULE 6**  
**FUTURE PUBLIC LANEWAY**  
 NOVEMBER 04, 2009

-  ADJUSTED 6m ACCESS EASEMENT
-  FUTURE PUBLIC LANEWAY

project  
**LIBERTY MARKET LOFTS**  
 5 HANNA AVENUE TORONTO, ONTARIO

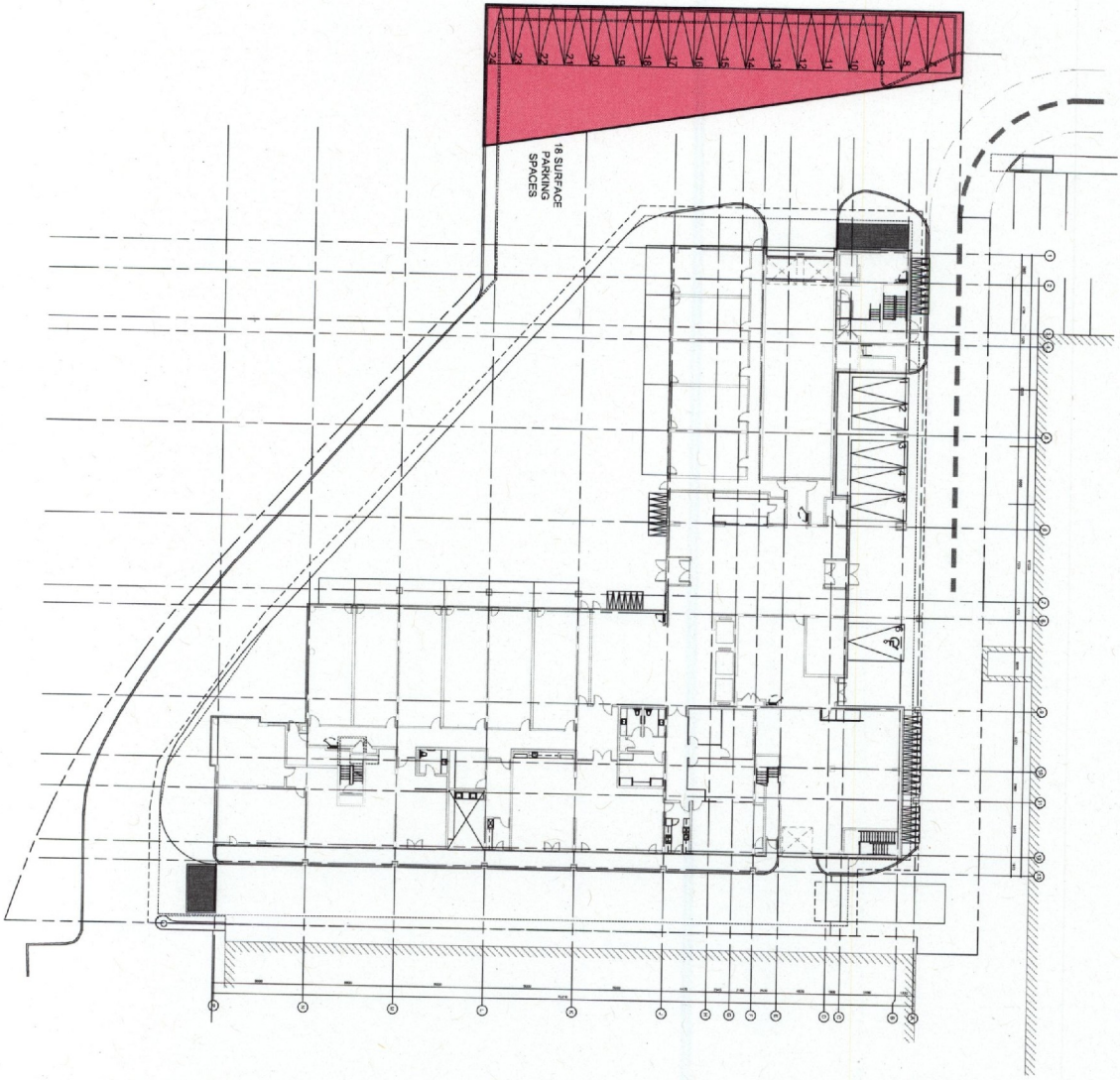
client  
 LIFETIME URBAN DEVELOPMENT GROUP

title  
**SCHEDULE 6**

project north

**WALLMANARCHITECTS**  
 30 Dundas Street, Suite 202  
 Toronto, Ontario M5V 2C9  
 / 416 540 1871  
 info@wallmanarchitects.com  
 www.wallmanarchitects.com

The information contained herein, including drawings and specifications, is intended to provide a general overview of the project and is not to be used for construction. The Contractor is to verify all existing conditions and dimensions.



**SCHEDULE 7**  
 RETAINED CLIENT LANDS  
 NOVEMBER 04, 2009

project  
 LIBERTY MARKET LOFTS  
 5 HANNA AVENUE, TORONTO, ONTARIO

client  
 LIFETIME URBAN DEVELOPMENT GROUP

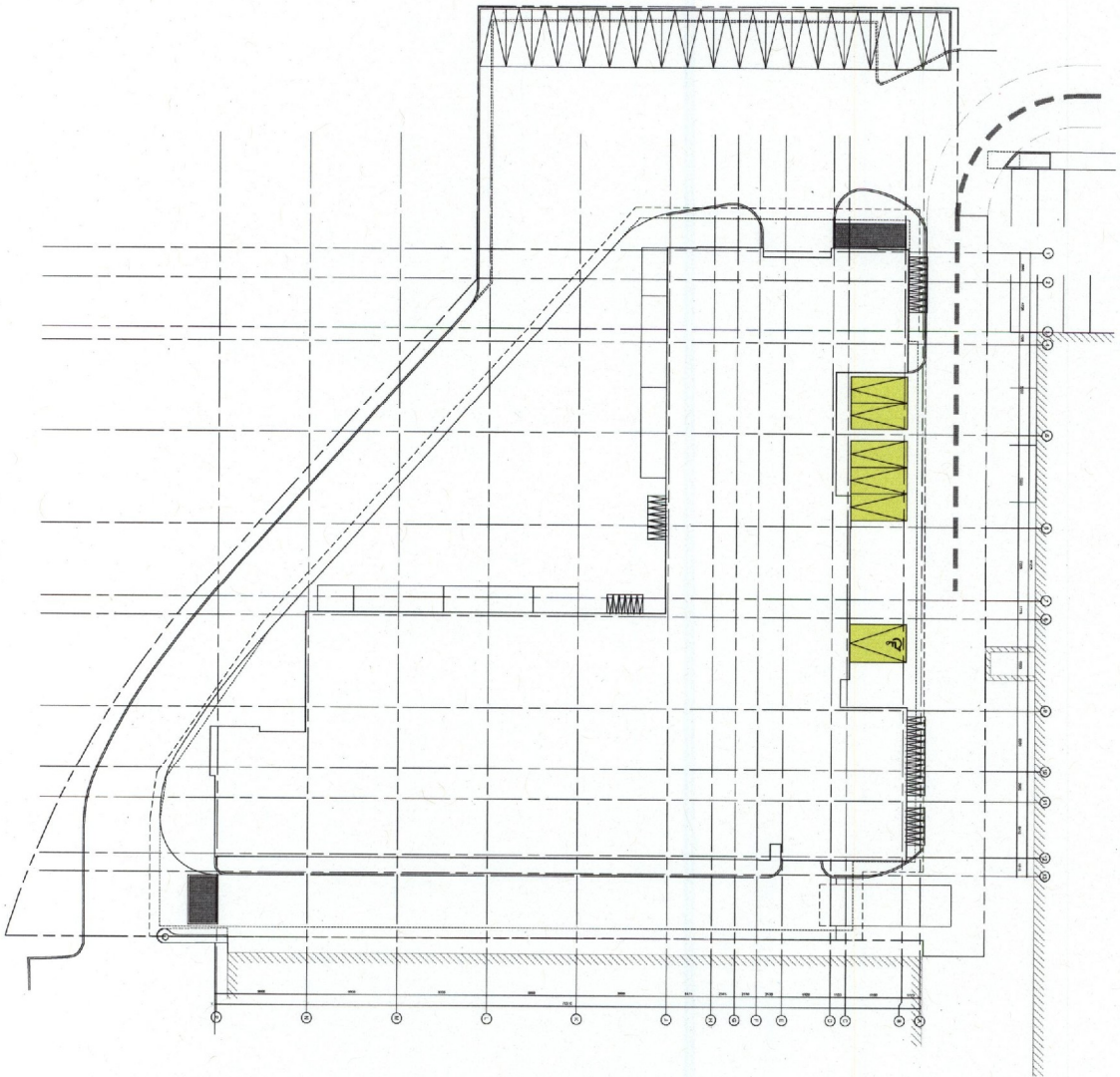
title  
 SCHEDULE 7

**WALLMANARCHITECTS**

30 Bloor Street, Suite 202  
 Toronto, Ontario M5V 2Z3  
 T 416 540 1870  
 F 416 540 1870  
 info@wallmanarchitects.com  
 www.wallmanarchitects.com

project logo: a circle containing the number 1

Copyright of this drawing is reserved by the architect. The drawings, and all associated documents and instruments of service by the architect, are the property of the architect and shall remain the property of the architect. The drawings, and all associated documents and instruments of service by the architect, are to be used only for the project and shall not be used for any other project without the written permission of the architect. Ownership of the drawings and all associated documents and instruments of service shall remain with the architect. The contractor is to verify all existing conditions and dimensions.



**SCHEDULE 8**  
 VARIANCE TO VISITOR  
 PARKING  
 (SURFACE VISITOR PARKING)  
 NOVEMBER 04, 2009



VISITORS PARKING	5
REGULAR STALL	1
H/C STALL	6
TOTAL	6

project: LIBERTY MARKET LOFTS  
 5 HANNA AVENUE, TORONTO, ONTARIO

client: LIFETIME URBAN DEVELOPMENT GROUP

title: SCHEDULE 8

**WALLMANARCHITECTS**  
 30 BUREAU STREET, SUITE 202  
 TORONTO, ONTARIO M5V 2C3  
 T 416 340 1870  
 F 416 340 1871  
 info@wallmanarchitects.com  
 www.wallmanarchitects.com

project north

This drawing is the property of Wallman Architects. It is to be used only for the project and site identified herein. No part of this drawing, and the information contained therein, may not be reproduced in any form or by any means, electronic or mechanical, including photocopying, recording, or by any information storage and retrieval system, without the prior written permission of Wallman Architects. The associated documents and instruments of service by Wallman Architects are not to be looked upon as a contract. The Contractor is to verify all existing conditions and dimensions.