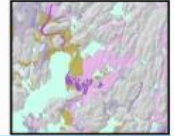
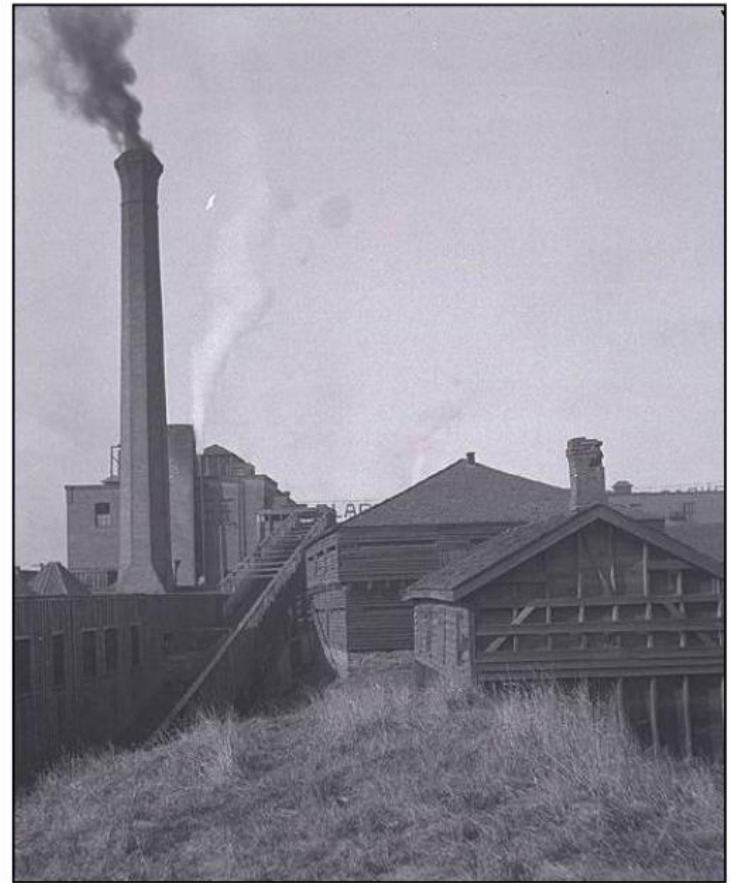




Heritage Impact Assessment of the Fort York Visitor Centre



- 2009 Heritage Impact Assessment of Fort York Visitor Centre (ASI and Herb Stovel) recommended general design and planning principles to guide development of the proposed VC.
- These principles were incorporated into the design competition process for the VC; design teams were required to address these principles and to respond to the impact assessment framework presented in the 2009 study.
- In 2010, ASI was retained to reassess impacts of the selected VC design concept for purposes of Site Plan Application approval.

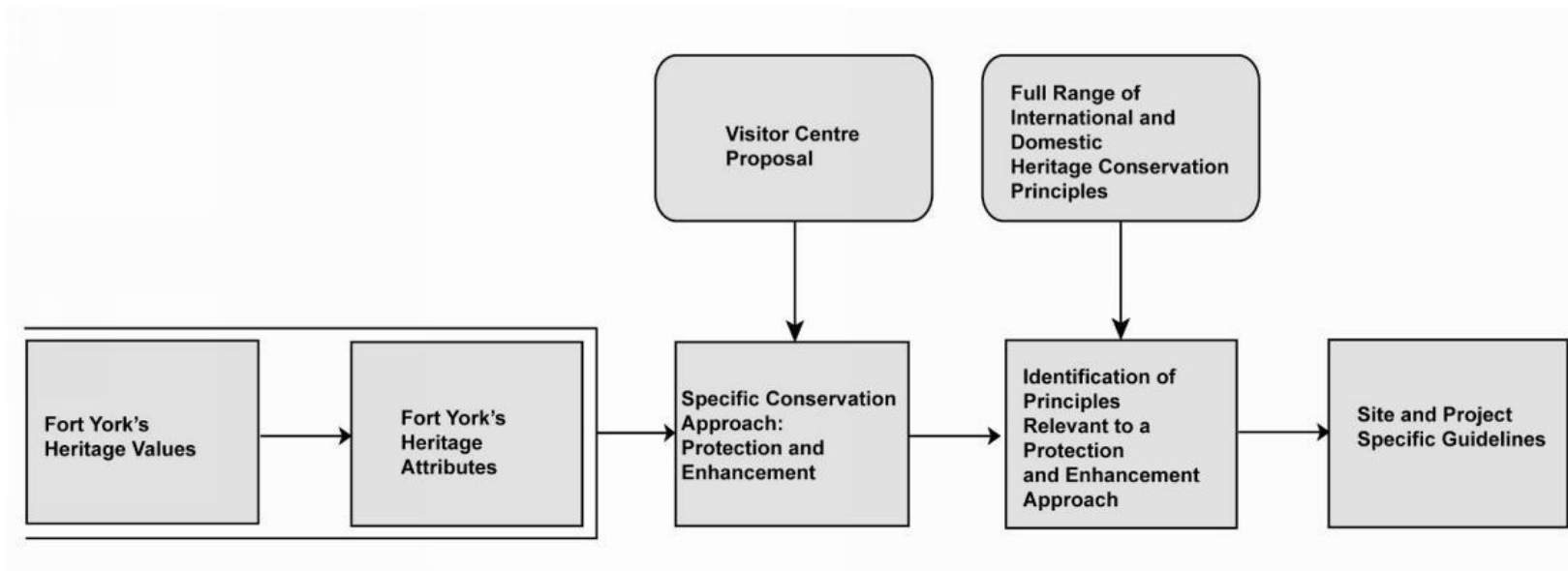




Heritage Impact Assessment of the Fort York Visitor Centre

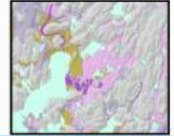


Framework Used to Develop Guidelines for the Visitor Centre (2009 Study)



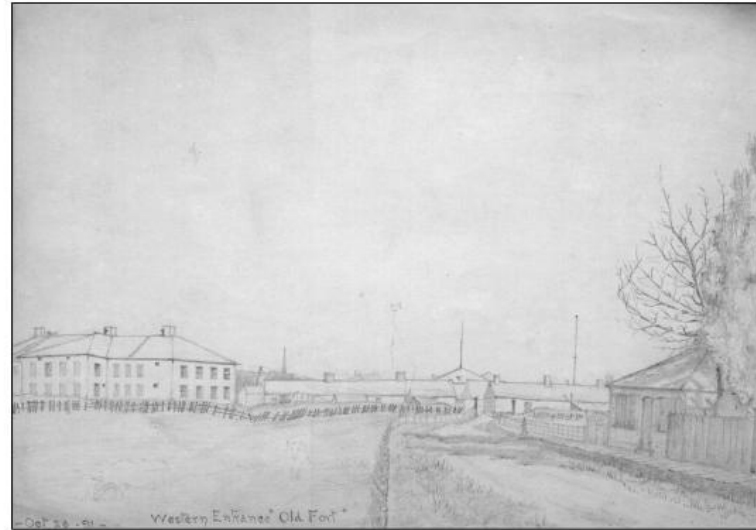


Heritage Impact Assessment of the Fort York Visitor Centre



Visitor Centre Guidelines Recommended in the 2009 Study

Limit impacts, such as disturbance, displacement, modification and alteration to heritage attributes such as archaeological resources, structures, landscape features, and views associated with the site's primary and secondary heritage values.



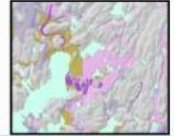
1891 sketch of Fort York



West end of Fort York and Grand Trunk Railway, August 1952



Heritage Impact Assessment of the Fort York Visitor Centre



Visitor Centre Guidelines Recommended in the 2009 Study

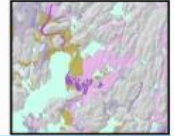
Maximize locational distance of the Visitor Centre from key heritage attributes of the site, including the Fort itself, and Garrison Common, in order to maintain the historic integrity of Fort York, as both physical site and as visitor experience.



*Plan of York surveyed and drawn by Lieut. Phillpotts,
Royal Engineers, 1818*

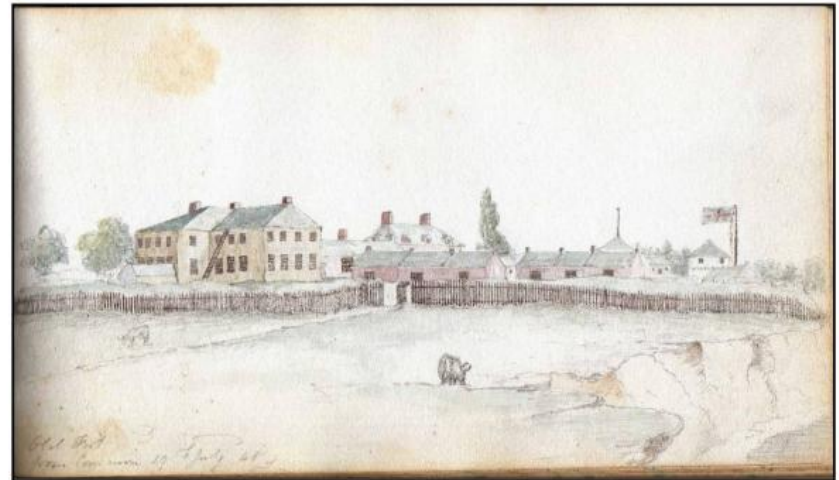


Heritage Impact Assessment of the Fort York Visitor Centre



Visitor Centre Guidelines Recommended in the 2009 Study

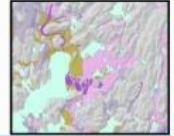
Site the Visitor Centre to optimize long term accessibility to the Armoury site. This would help unify the overall site and bridge the spatial divide presently extant between the Armoury building and the remainder of the site. Such a location would strengthen the functional integrity of the site, and preserve its visual, structural and psychological integrity.



Old Fort From Common, 19th July 1848

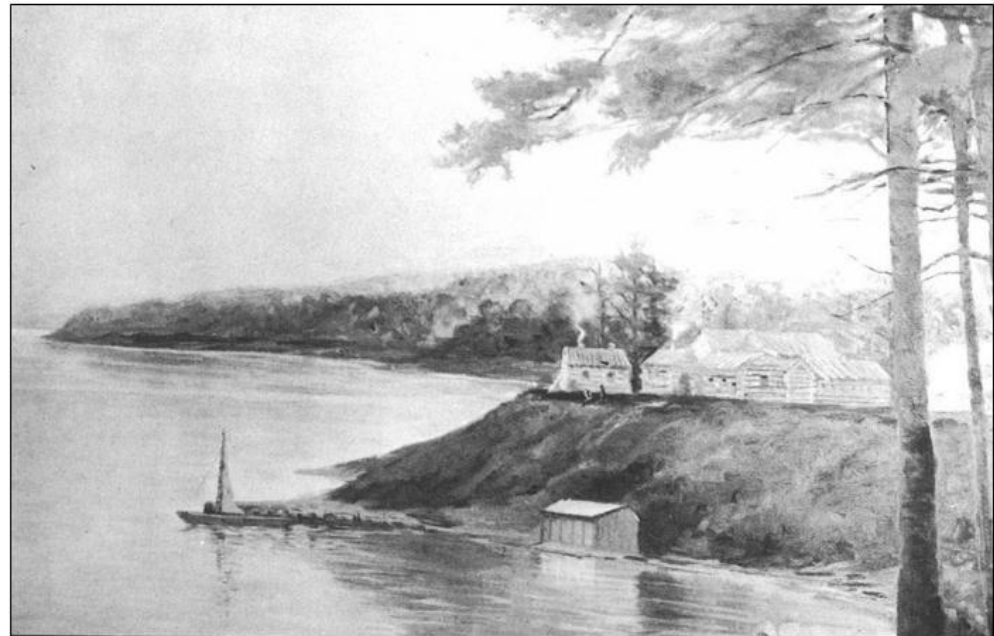


Heritage Impact Assessment of the Fort York Visitor Centre



Visitor Centre Guidelines Recommended in the 2009 Study

Avoid any suggestions of false historicism in form, design, details, and materials of the Visitor Centre.



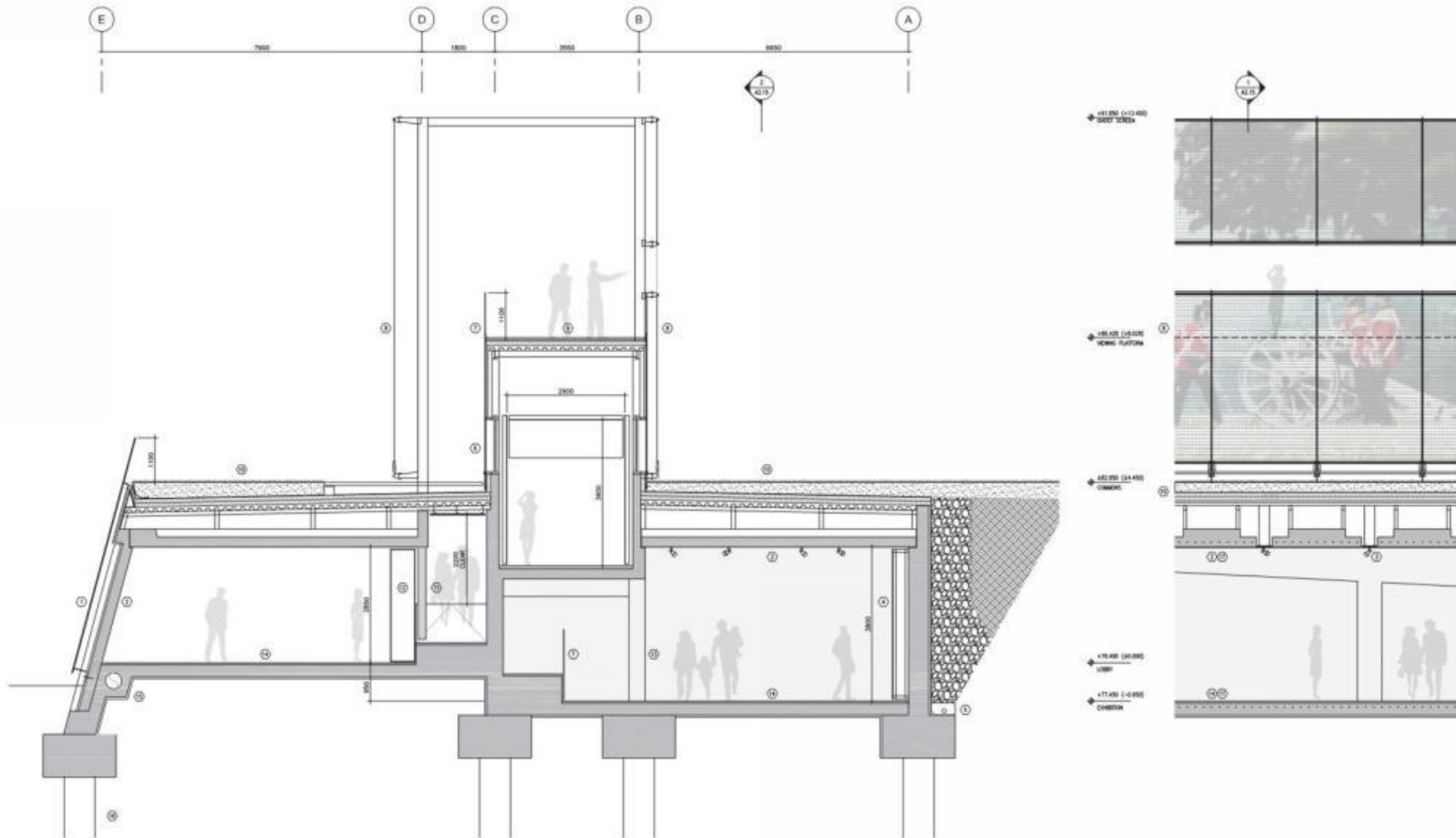
Elizabeth Simcoe's 1796 sketch of the Garrison. The mouth of Garrison Creek lies in the lower right foreground.



Legend

- URBAN LEVEL**
- 1 MUSEUM OF LARGE OBJECTS
 - 2 AIRCOURTY
 - 3 URBAN PLAZA
 - 4 STEEL ESCARPMENT
 - 5 LIQUID LANDSCAPE
 - 6 PARKING PIER / OLD RAILWAY CUT
 - 7 PEDESTRIAN / BIKE / SERVICE / EMERGENCY VEHICLE RAMP
 - 8 BIKE BRIDGE
 - 9 WHYY MOUNDS - CHILDRENS TERRACE
 - 10 ENTRANCE BRIDGE
 - 11 CAVE TERRACE
 - 12 GHOST TERRACES
 - 13 EVENTS DOCK
 - 14 WATER TABLE ART BAY
 - 15 WATER CLEANSING SWALE
 - 16 SOLID LAKE
 - 17 ARCHAEOLOGICAL SITE
 - 18 GARBAGE / RECYCLING COMPOUND LOCATION TRIG
 - 19 SHIPPING & RECEIVING
 - 20 SIGNALISED INTERSECTION
 - 21 BUS DROP OFF / PICK UP

- GARRISON COMMON LEVEL**
- 22 GHOST SCREEN
 - 23 VIEWING TRENCH
 - 24 ARCHAEOLOGICAL DIG
 - 25 VIEWING PLATFORM
 - 26 CAFE TERRACE
 - 27 CEMETERY
 - 28 GARRISON COMMON
 - 29 FORT YORK



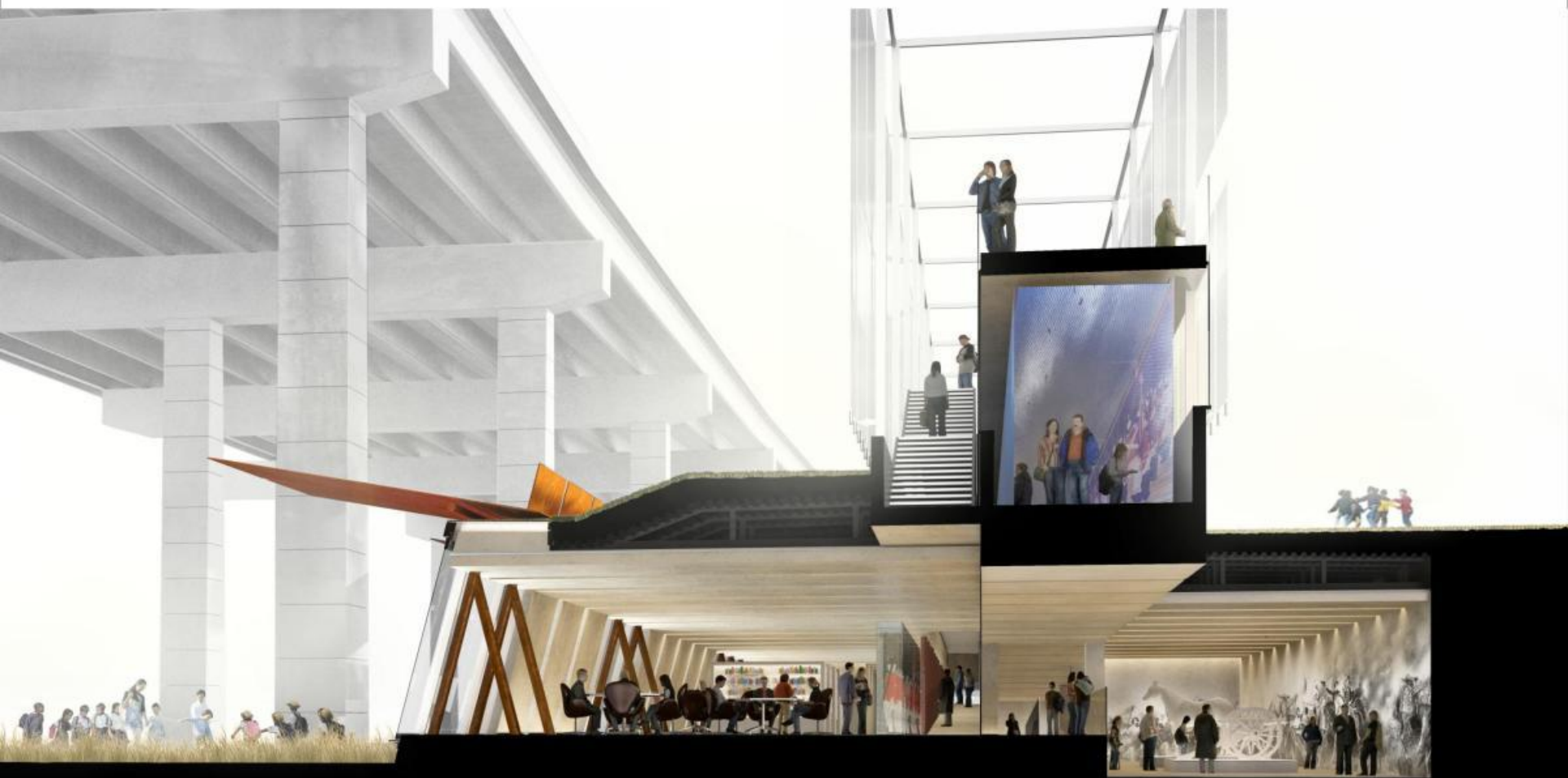
Legend

- 1 LOWER WALL ASSEMBLY (R16):
2.4MX3.6M 'COR-TEN' CLADDING PANELS ON 200MM CTRS,
SUPPORTED ON CONCEALED STEEL FRAME,
35MM AIR SPACE
HIGH DENSITY EXTRUDED STYRENE INSULATION WITH
INTEGRATED AIR/VAPOUR BARRIER
PRE-CAST CONCRETE STRUCTURAL WALL
- 2 PRE-CAST WALL & CEILING PANEL, 2200MM WIDE ON 200MM
CTRS WITH FACTORY GROUND & HONED FINISH
- 3 LIGHTING/VENTILATION INSERT IN 400MM SLOT BETWEEN
CEILING PANELS
- 4 TYPICAL RETAINING WALL ASSEMBLY (R16):
FILTER FABRIC OVER DRAINAGE BOARD
HIGH DENSITY EXTRUDED STYRENE INSULATION
WATER PROOF MEMBRANE
CAST-IN-PLACE CONCRETE STRUCTURAL WALL
SECONDARY WALL
- 5 DRAINAGE TILE WITH 20MM CLEAR STONE; TOP & SIDE OF
DRAIN, MINIMUM 1M WIDE FREE DRAINING BACKFILL OVER
DRAIN
- 6 CLEAR DOUBLE GLAZED 55G WITH INTERIOR SOLAR
CONTROL
- 7 CLEAR LAMINATED GLASS GUARD
- 8 GHOST SCREEN:
GALVANNEED STEEL FRAME ON 520MM CTRS
2.6M X 8.5M WOVEN STEEL FABRIC PROJECTION SURFACE
- 9 VIEWING PLATFORM ASSEMBLY:
IPE PLANKS ON SPACERS
2 PLY ROOF MEMBRANE
OVERLAY BARRIER BOARD ON RIGID INSULATION BOARD
MEMBRANE AIR/VAPOUR BARRIER
PROTECTION BOARD ON STEEL DECK
STEEL FRAME
- 10 INTENSIVE GREEN ROOF ASSEMBLY (R40):
350-450MM VEGETATION (TO MATCH EXISTING GRASS OF
COMMONS)
GROWING MEDIUM/MAT ON WATER RETENTION FLEECE
DRAINAGE LAYER
ROOT BARRIER
2 PLY ROOF MEMBRANE
OVERLAY BARRIER BOARD ON RIGID INSULATION
MEMBRANE AIR VAPOUR BARRIER
STEEL DECK WITH CONCRETE TOPPING
SECONDARY STEEL FRAME ON PRE-CAST CEILING PANEL
- 11 200MM Ø STEEL COLUMN ON 2600MM CTRS
- 12 DISPLAY WALL
- 13 600X400MM RC COLUMN ON 7800MM CTRS
- 14 SMOOTH GROUND CONCRETE FLOOR FINISH WITH
POLISHED-IN LITHIUM SILICATE SEALER/DENSIFIER
- 15 BURIED SUPPLY DUCT CW DISPLACEMENT VENTILATION
DIFFUSERS @ WINDOWS BETWEEN PRECAST CONCRETE
WALL PANELS
- 16 RC CAISSONS TO STRUCTURAL ENGINEER'S DETAILS
- 17 RADIANT IN SLAB HEATING & COOLING (CEILING COOLING
SUBJECT TO STRUCTURAL & MECHANICAL REQUIREMENTS)



Detail Cross Section
Fort York National Historic Site Visitor Centre
Patkau Architects Inc / Kearns Mancini Architects Inc

Scale: 1:100
reference:
Issue: 2010.05.18



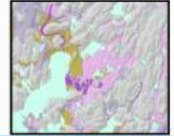
Sectional Perspective looking West
Fort York National Historic Site Visitor Centre
Patkau Architects Inc / Kearns Mancini Architects Inc

Scale:
reference:
Issue: 2010.05.18

Walkthrough video will be inserted here



Heritage Impact Assessment of the Fort York Visitor Centre



Objectives and Results of 2010 Heritage Impact Assessment of Proposed Fort York Visitor Centre

- Assess if proposed Visitor Centre meets guidelines put forward in 2009 study.
- Analyze impacts of proposed Visitor Centre on the site's significant viewsheds.

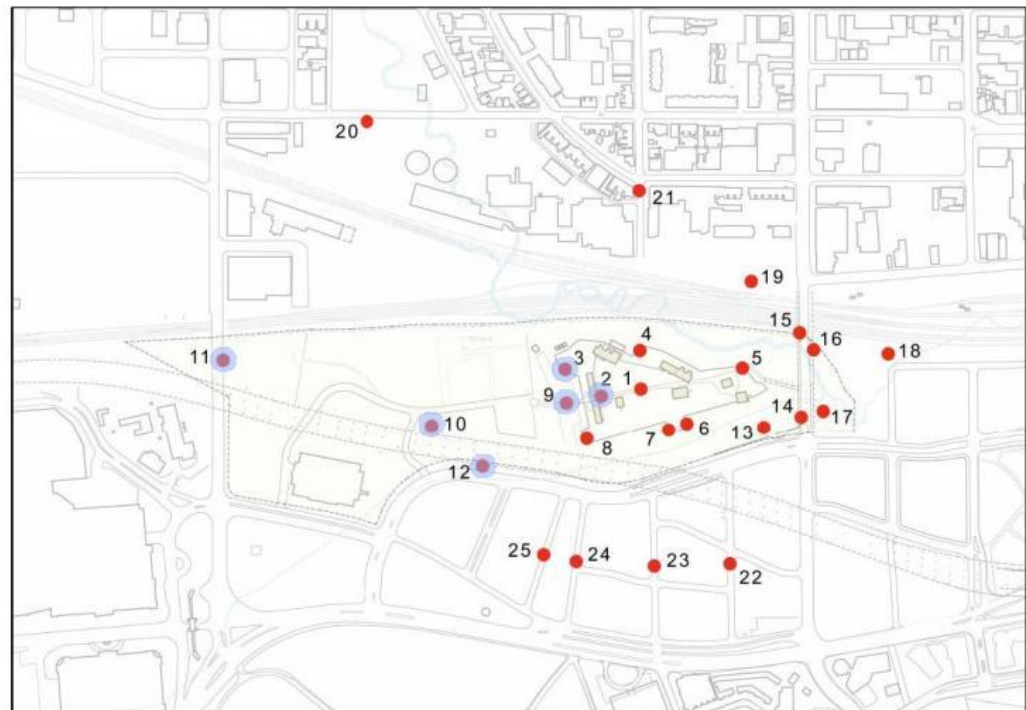


Image reproduced from draft Heritage Conservation District Plan (2010)



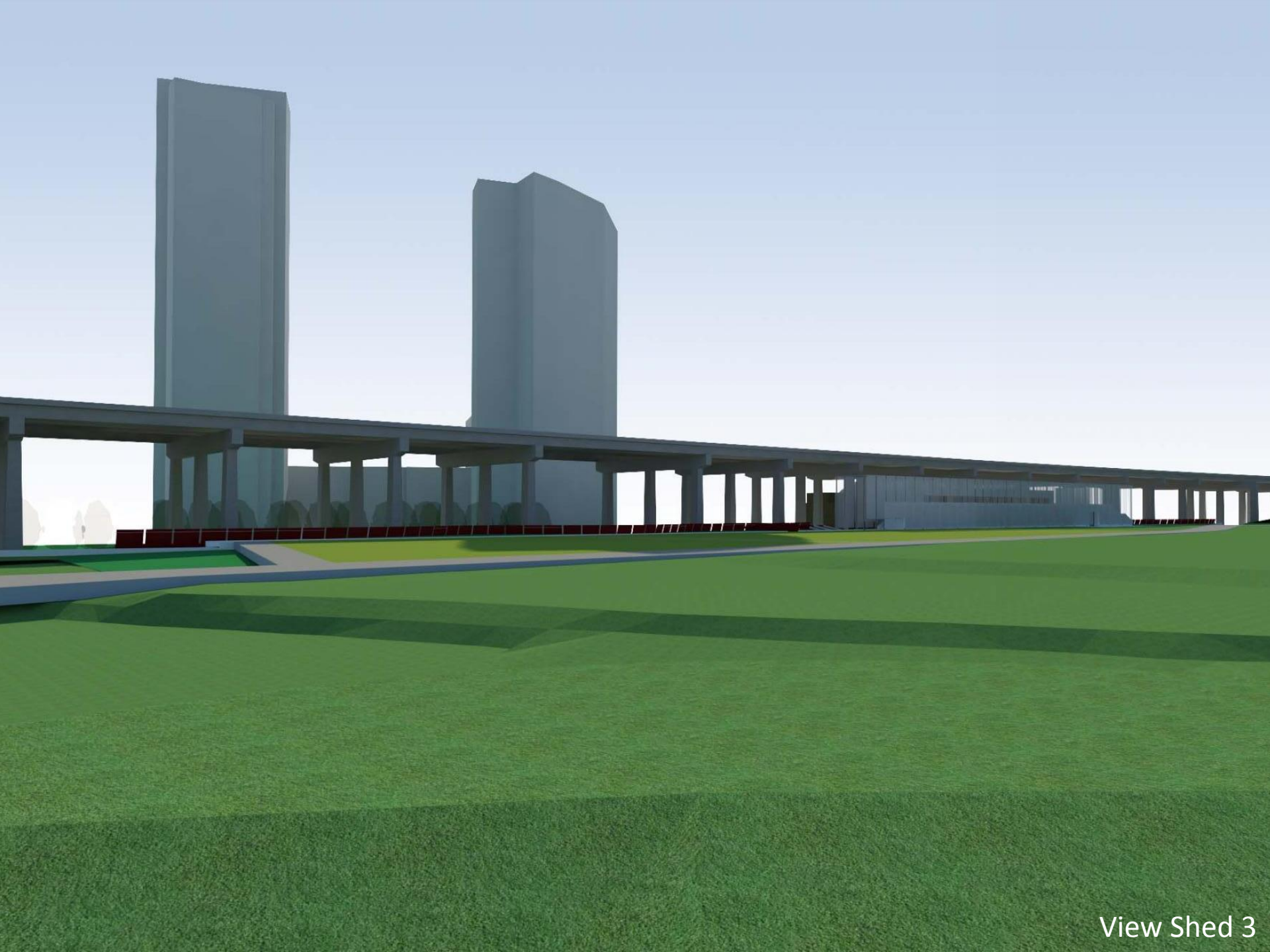
View Shed 12-1



View Shed 12-2



View Shed 2



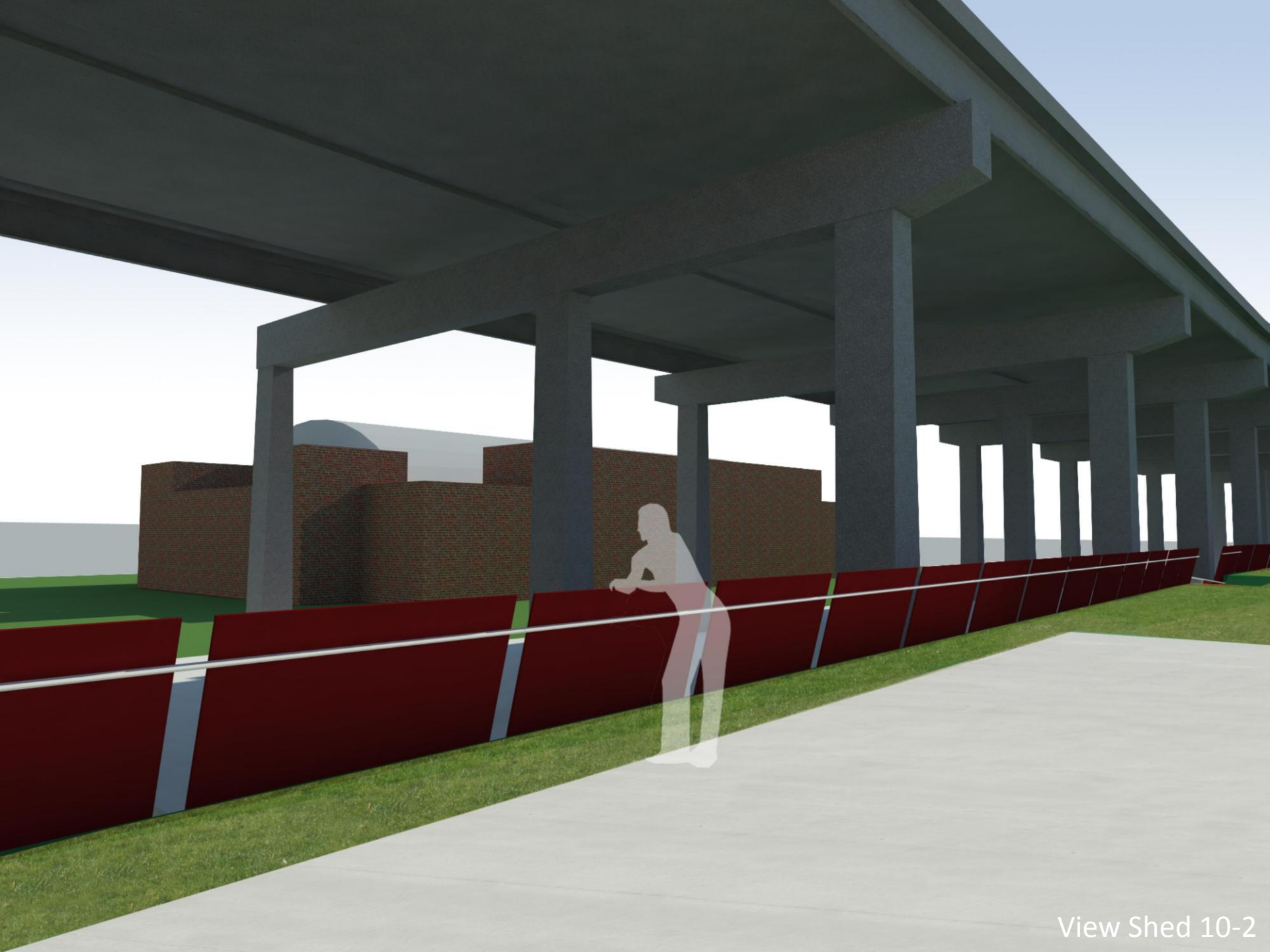
View Shed 3



View Shed 9



View Shed 10-1



View Shed 10-2





Heritage Impact Assessment of the Fort York Visitor Centre



Results of 2010 Heritage Impact Assessment of Proposed Fort York Visitor Centre

Overall, the proposed Visitor Centre meets the design and siting principles recommended as part of the original 2009 heritage impact assessment and is expected to result in minimal adverse impacts on the Fort York and Garrison Common Heritage Conservation District and National Historic Site.



View Looking North

Fort York National Historic Site Visitor Centre
Patkau Architects Inc / Kearns Mancini Architects Inc

Scale:
reference:
Issue: 2010.05.18



View Under Gardiner Looking East
Fort York National Historic Site Visitor Centre
Patkau Architects Inc / Kearns Mancini Architects Inc

Scale:
reference:
Issued: 2010.05.18