

# People, Dogs & Parks Strategy

## **Off-Leash Policy Review**

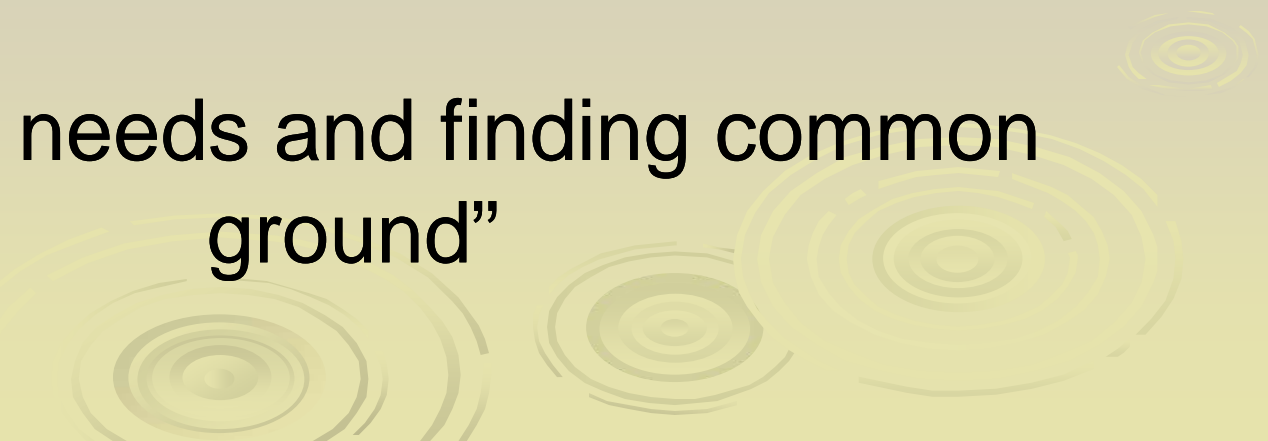
**January 2010**

A decorative graphic at the bottom of the slide consisting of several concentric circles of varying sizes, resembling ripples on water, rendered in a light yellow-green color.

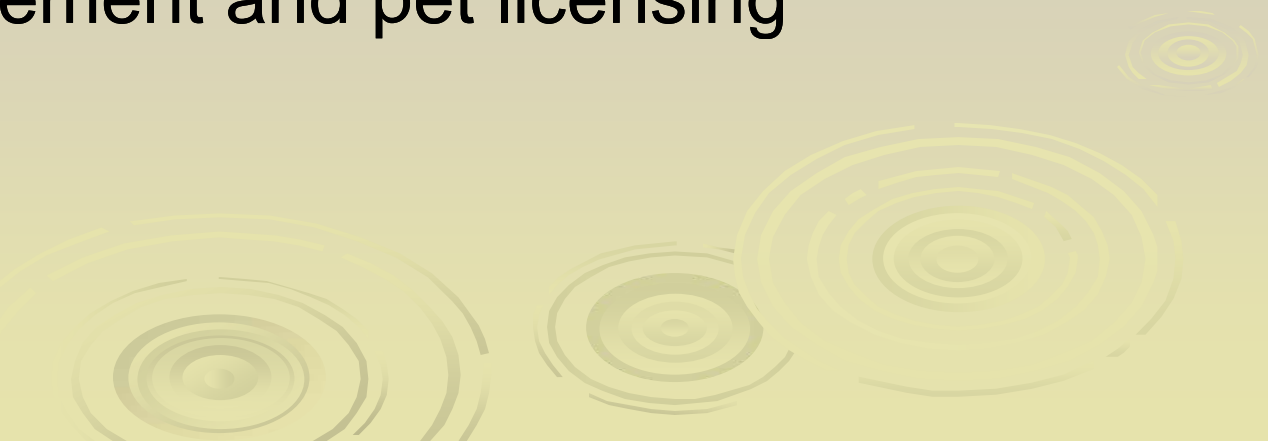
# People Dogs & Parks Strategy

- Enacted by Council in 2007
- Framework for provision of Dogs Off-Leash Areas
- Research, analysis, and extensive consultation

“Balancing needs and finding common ground”

A decorative graphic in the bottom right corner consisting of several concentric, light-colored circles that resemble ripples on water, set against a light green background.

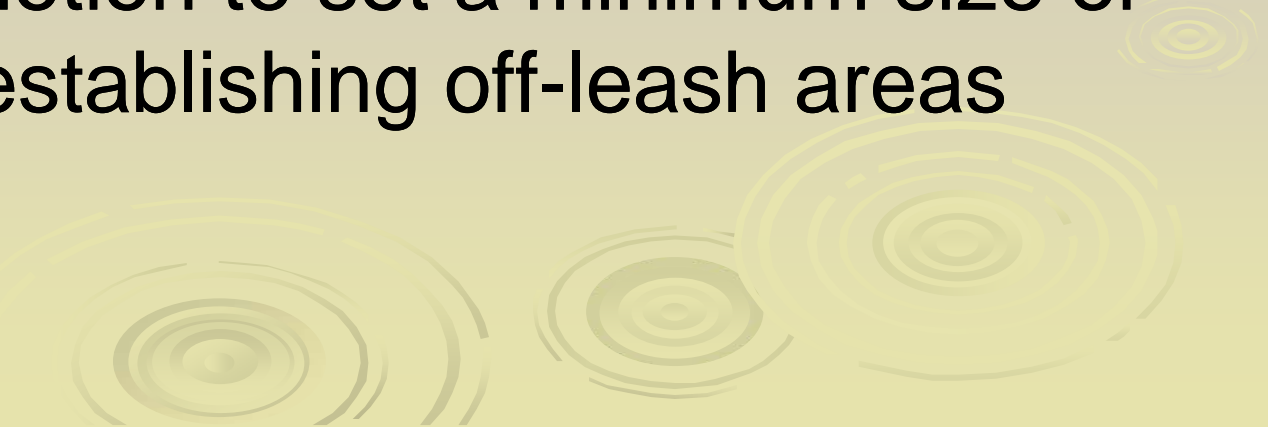
# 2007 Policy – Highlights

- Specific location criteria
  - Pre-existing off-leash areas – Grandparenting
  - Application procedure to develop off-leash areas
  - Monitoring and dispute resolution process
  - Appeal process
  - By-law enforcement and pet licensing
  - Signage
- 
- A decorative graphic at the bottom of the slide consisting of several concentric circles of varying sizes, resembling ripples in water, set against a light green background.


# Impact of Dogs in Parks



# Scope of the Report

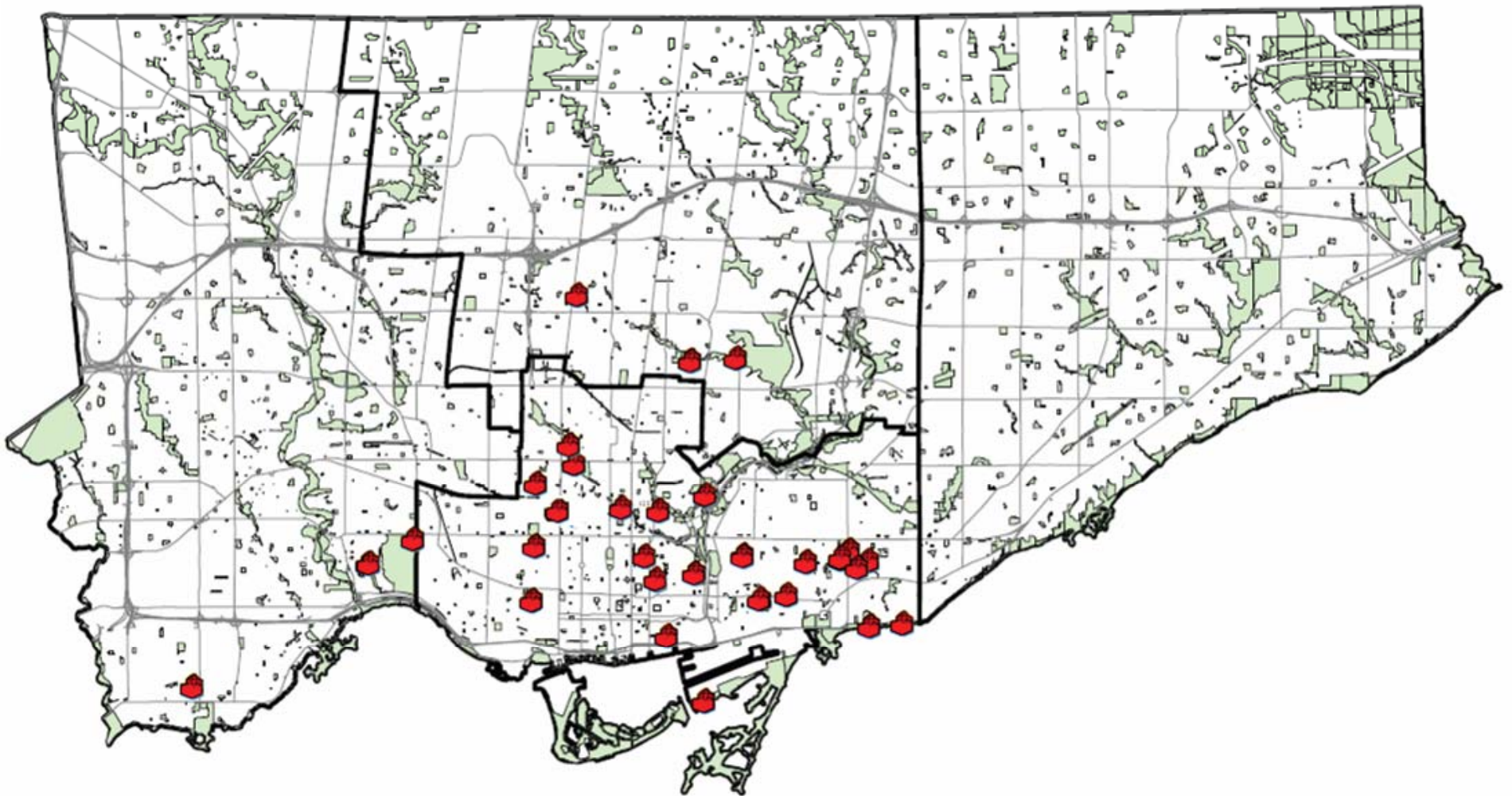
- Implementation of policy progress to date
  - Refinements to the existing Off-Leash Policy; and
  - Review of motion to set a minimum size of 2 acres for establishing off-leash areas
- 
- A decorative graphic at the bottom of the slide consisting of several concentric circles of varying sizes, resembling ripples in water, rendered in a light green color.

# Implementing the Off-Leash Policy

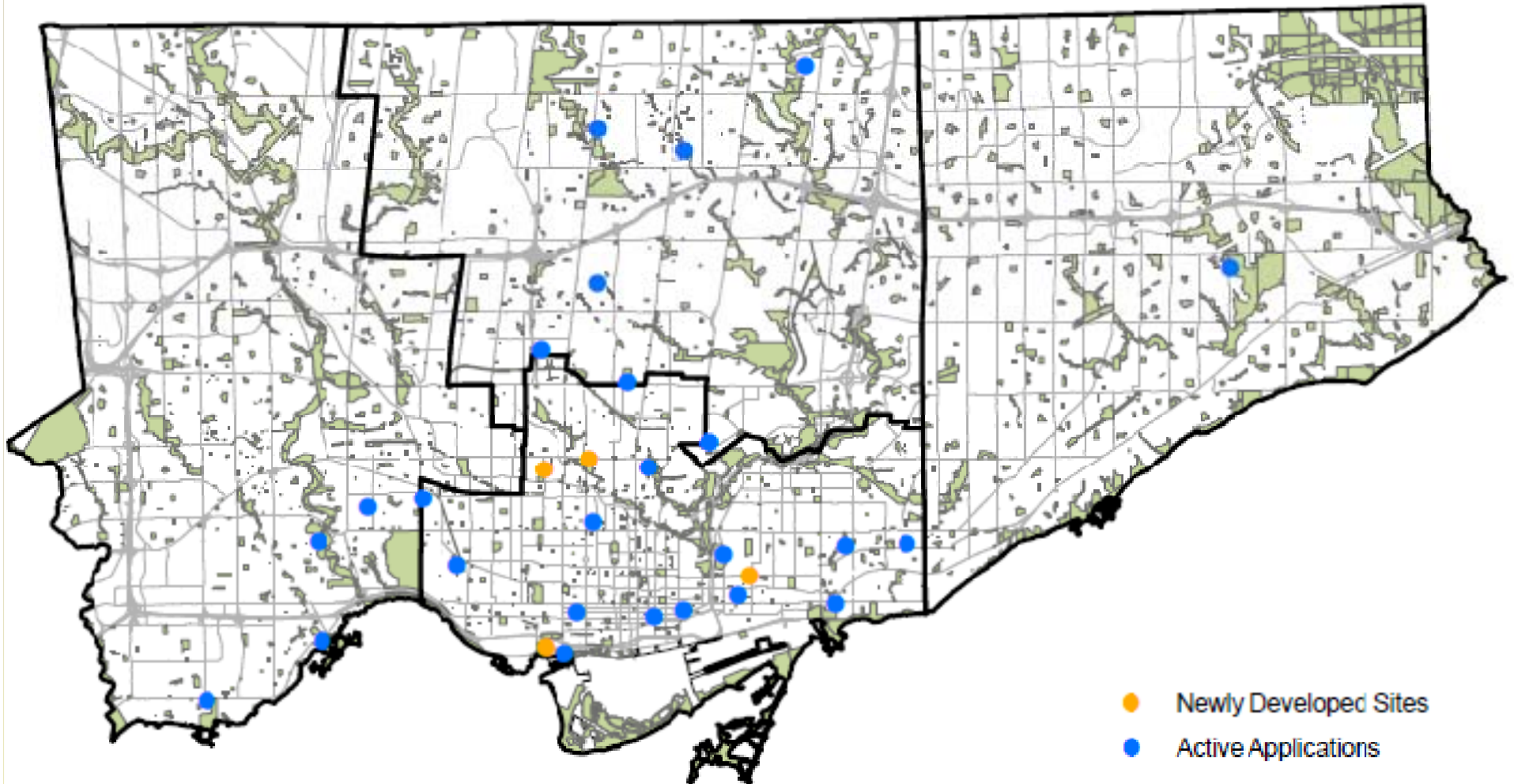
- 32 pre-existing off-leash sites
  - 11 pending requests
  - 42 new applications
- 
- A decorative graphic at the bottom of the slide consisting of several concentric circles of varying sizes and colors (light green, yellow, and white) that resemble ripples in water.



# Distribution of pre-existing sites that met the policy criteria



# Distribution of newly developed sites and active applications





# Implementing the Off-Leash Policy

(Continued)

- Process improvements
- Construction considerations



# Off-Leash Area Standards

Construction and Amenity Standards for Off-Leash Areas implemented in 2009



Post and Paddle Fence



Steel Mesh Fence



Page-wire Fence



Modern Horseman Fence





# Off-Leash Area Standards

## Surface Treatments

- Granite Sand
- High Performance Bedding
- Wood Mulch



Granite Sand



High Performance Bedding

## Site Furnishings

- Benches and Picnic Tables
- Waste Receptacles





# Off-Leash Areas – Before & After



**Hideaway Park**



# Off-Leash Areas – Before & After



**Greenwood Park**



# Newly Developed Sites



**Wychwood Barns Park**



**Sir Winston Churchill**



**Coronation Park**



**Gerrard - Carlaw Pkt**



# Recommended Policy Refinements

Experience with policy parameters has pointed to a number of refinements to;

- Provide greater clarity in the assessment criteria for off-leash areas
- Streamline decision making-process
- Better link consideration of dogs off-leash request to community needs, overall park planning, development and financial sustainability

# Recommended Policy Refinements

(Continued)

- Linking dog off-leash requests to capital and parks planning process for park redevelopment and new park development
- Neighbourhood characteristics and needs
- Impact on functionality, residences and the natural environment
- Removal of the grand-parenting criteria
- Elimination of the Dog Owner Association requirement
- Adjustments to area exclusion criteria and fencing requirements
- Minor adjustments to user restrictions
- Elimination of redundant appeal provisions
- Compliance with noise by-law

## Review of 2 Acre Minimum Park Size Motion

- Of the 1470 parks in the City of Toronto, 679 (46%) are under 2 acres
- Of the 457 parks in the inner city, 316 (69%) are less than 2 acres
- Strict size prohibition eliminates opportunities where the need for off-leash areas is the highest

# Existing Off-Leash Areas Under 2 Acres

- **Cawthra Square**
- **Gerrard / Carlaw**
- **Hideaway Park**
- **Oakcrest Park**
- **Wildwood Crescent Playground**
  
- **St. Andrew's Playground (2010)**
- **51 Power St. (2010)**
  
- **All located in Toronto / East York District**

