

## **Appendix A**

### **Applicant's Submitted Drawings – Elevations and Partial Elevations**

UNION STATION TRAIN SHED

VACANT  
PROPERTY

INTERIM PARKING  
USE

INTERIM PARKING  
USE

BREMNER BOULEVARD

AIR CANADA  
CENTRE

BAY STREET

SIMCOE STREET

VACANT  
PROPERTY

GARDINER EXPRESSWAY

PARKING AND  
RESTAURANT USE

LAKESHORE BOULEVARD EAST

YORK STREET

LAKESHORE BOULEVARD WEST



1  
PD2.2

**SIGN N1 & N2**  
NET AREA FOR TOWER  
TENANT LED ILLUM. STATIC  
SIGNAGE LOGOS

1  
PD2.1

**SIGN N3**  
HOTEL SIGNAGE TBD  
(REFER TO W1.8)

**SIGN W14**  
TENANT BLADE SIGN  
WEIGHT: 55,000 lbs  
POWER: 120 A @120V  
DATA REQUIRED: CAT-5  
(REFER TO W1.7)

MLSQ  
North Elevation  
1  
PD 2.0  
1/64" = 1'-0"

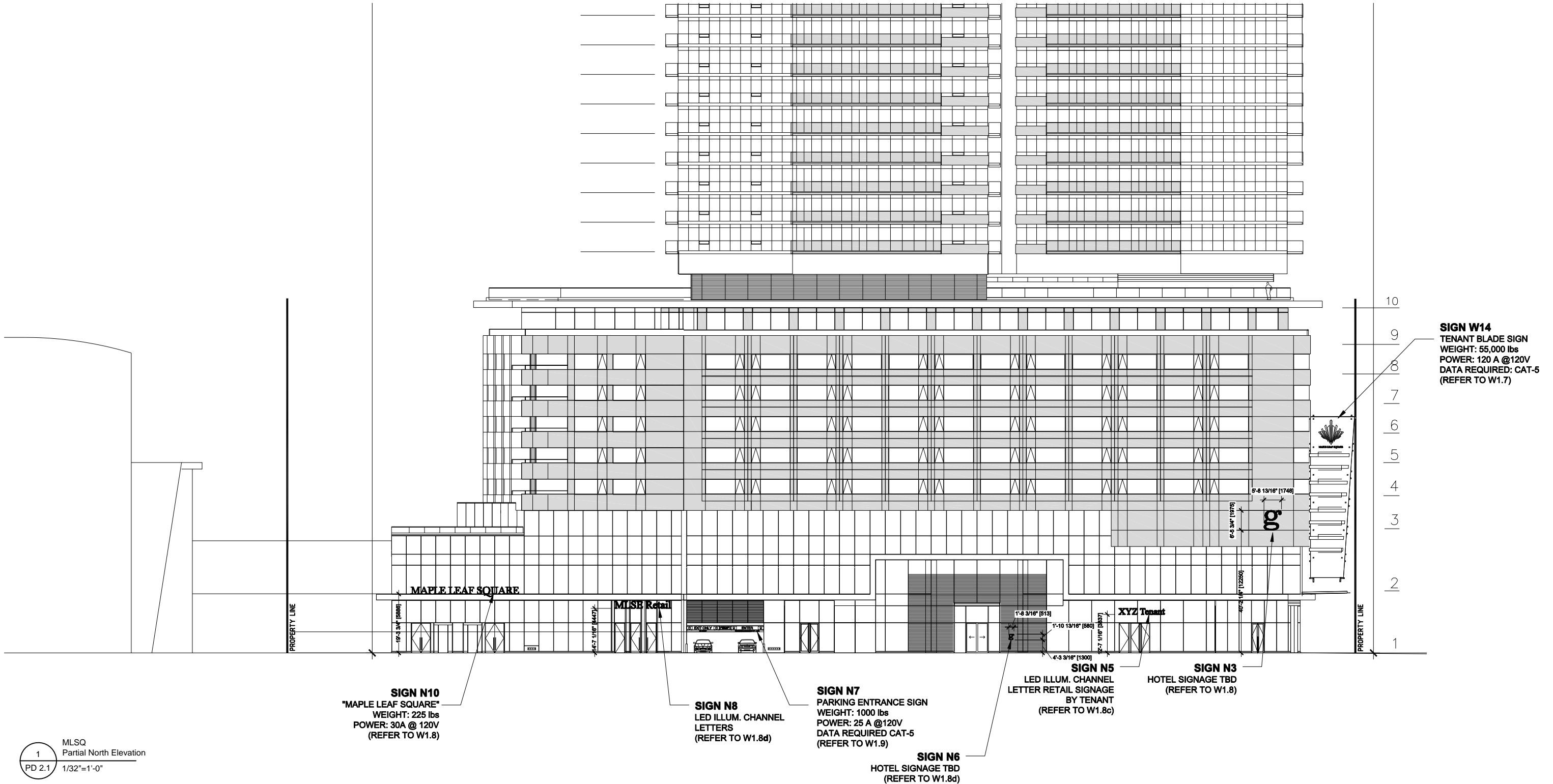
**SIGN N10**  
"MAPLE LEAF SQUARE"  
WEIGHT: 225 lbs  
POWER: 30A @ 120V  
(REFER TO W1.8)

**SIGN N7**  
PARKING ENTRANCE SIGN  
WEIGHT: 1000 lbs  
POWER: 25 A @120V  
DATA REQUIRED CAT-5  
(REFER TO W1.9)

**SIGN N6**  
HOTEL SIGNAGE TBD  
(REFER TO W1.8d)

**SIGN N5**  
LED ILLUM. CHANNEL  
LETTER RETAIL SIGNAGE  
BY TENANT  
(REFER TO W1.8c)

**SIGN N8**  
LED ILLUM. CHANNEL  
LETTERS  
(REFER TO W1.8d)



**SIGN W14**  
TENANT BLADE SIGN  
WEIGHT: 55,000 lbs  
POWER: 120 A @ 120V  
DATA REQUIRED: CAT-5  
(REFER TO W1.7)

**SIGN N10**  
"MAPLE LEAF SQUARE"  
WEIGHT: 225 lbs  
POWER: 30A @ 120V  
(REFER TO W1.8)

**SIGN N8**  
LED ILLUM. CHANNEL  
LETTERS  
(REFER TO W1.8d)

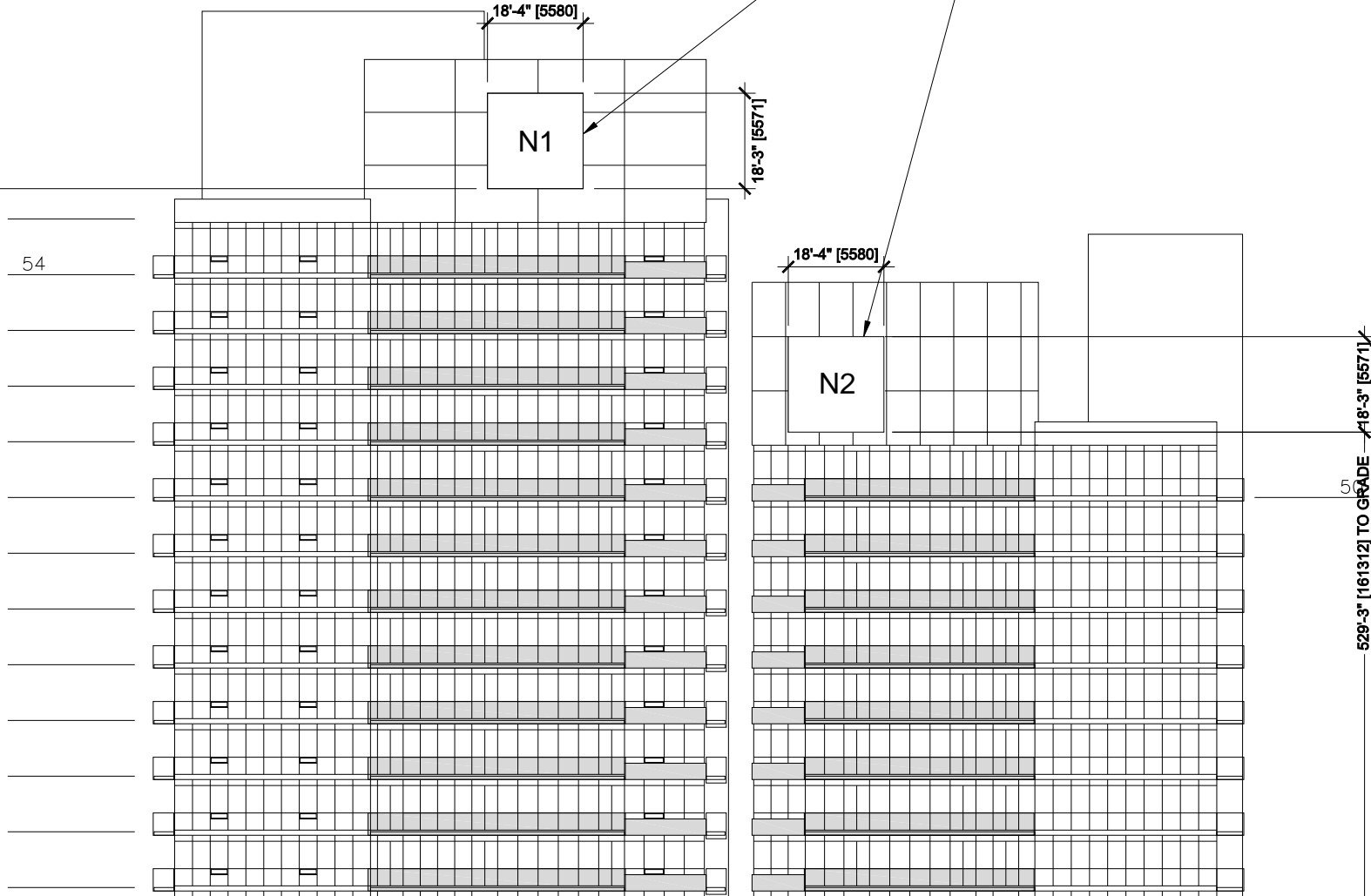
**SIGN N7**  
PARKING ENTRANCE SIGN  
WEIGHT: 1000 lbs  
POWER: 25 A @ 120V  
DATA REQUIRED CAT-5  
(REFER TO W1.9)

**SIGN N6**  
HOTEL SIGNAGE TBD  
(REFER TO W1.8d)

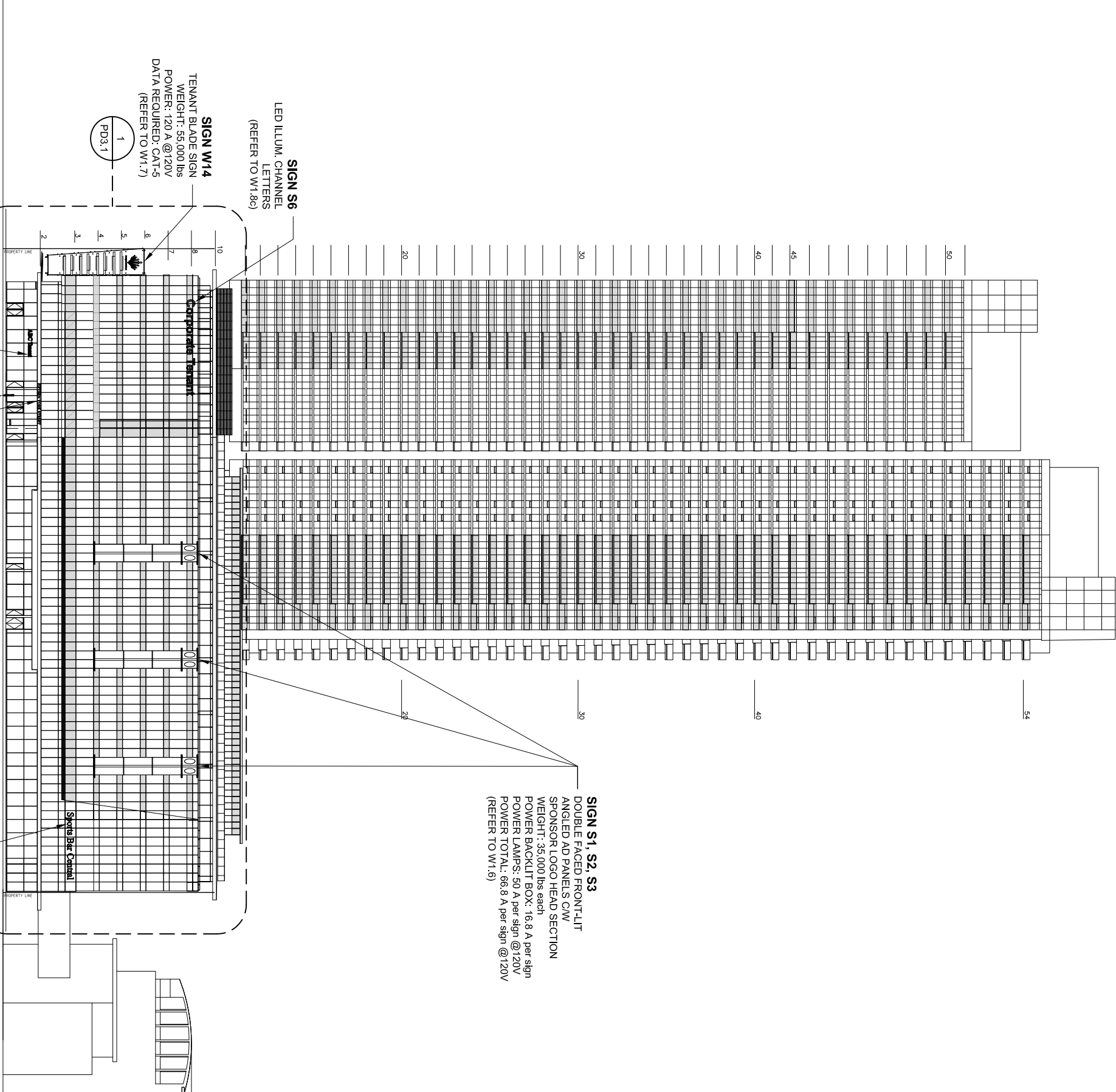
**SIGN N5**  
LED ILLUM. CHANNEL  
LETTER RETAIL SIGNAGE  
BY TENANT  
(REFER TO W1.8c)

**SIGN N3**  
HOTEL SIGNAGE TBD  
(REFER TO W1.8)

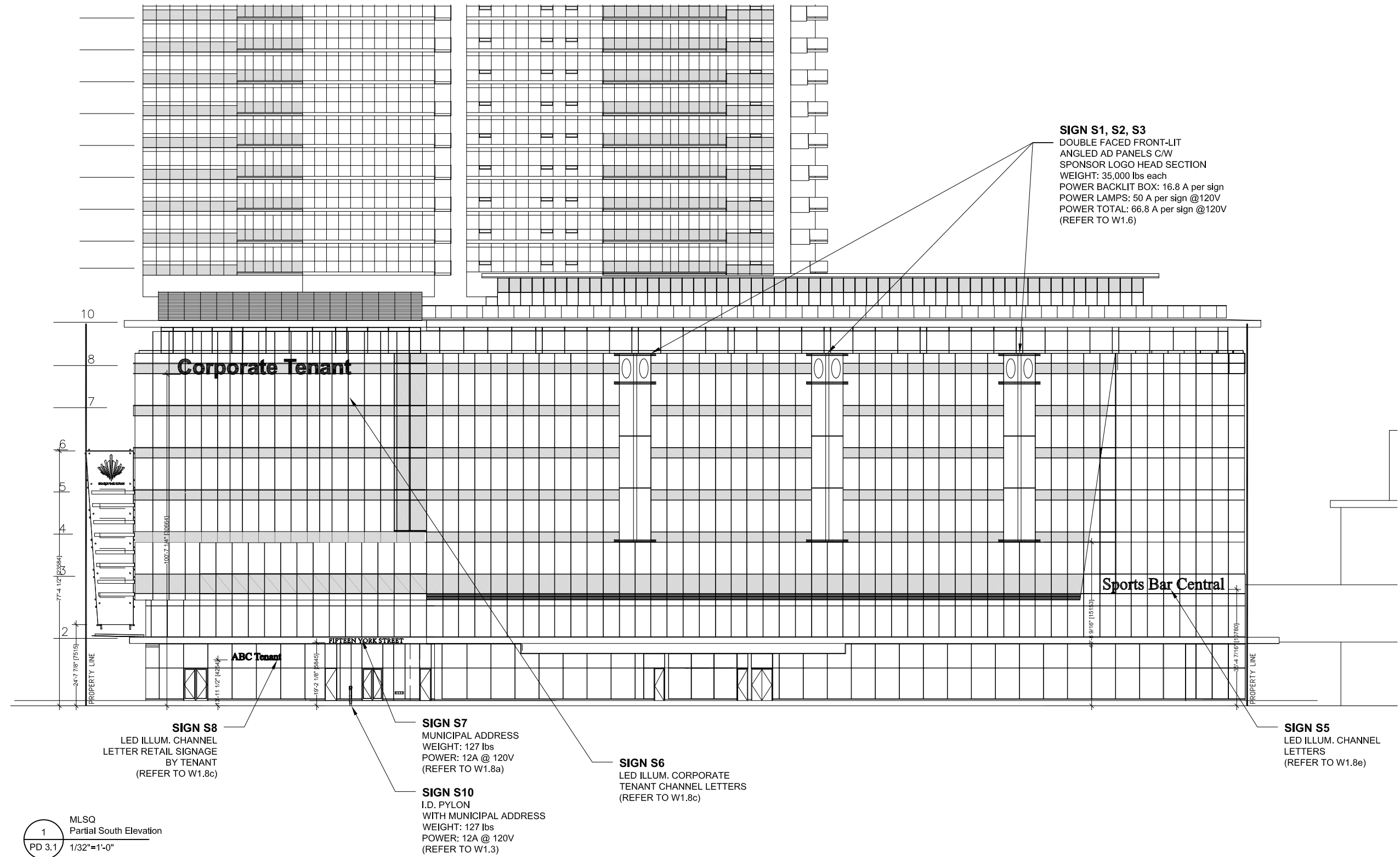
575'-10" [175514] TO GRADE



**SIGN N1 & N2**  
NET AREA FOR TOWER  
TENANT LED ILLUM. STATIC  
SIGNAGE LOGOS

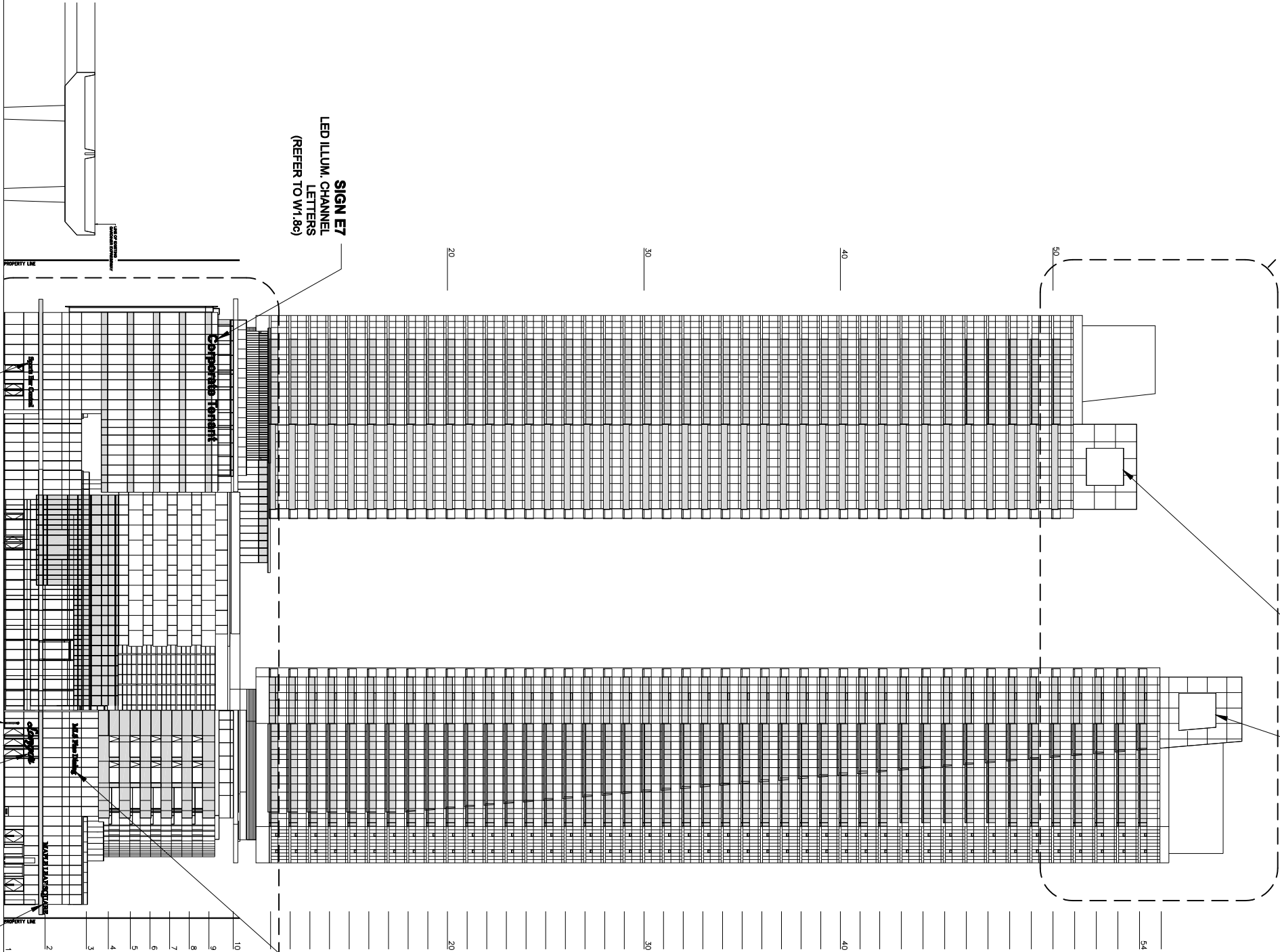


1  
M.L.S.Q.  
South Elevation  
PD 3.0 1/64"=1'-0"



**SIGN E1 & E2**  
NET AREA FOR TOWER  
TENANT LED ILLUM. STATIC  
SIGNAGE LOGOS

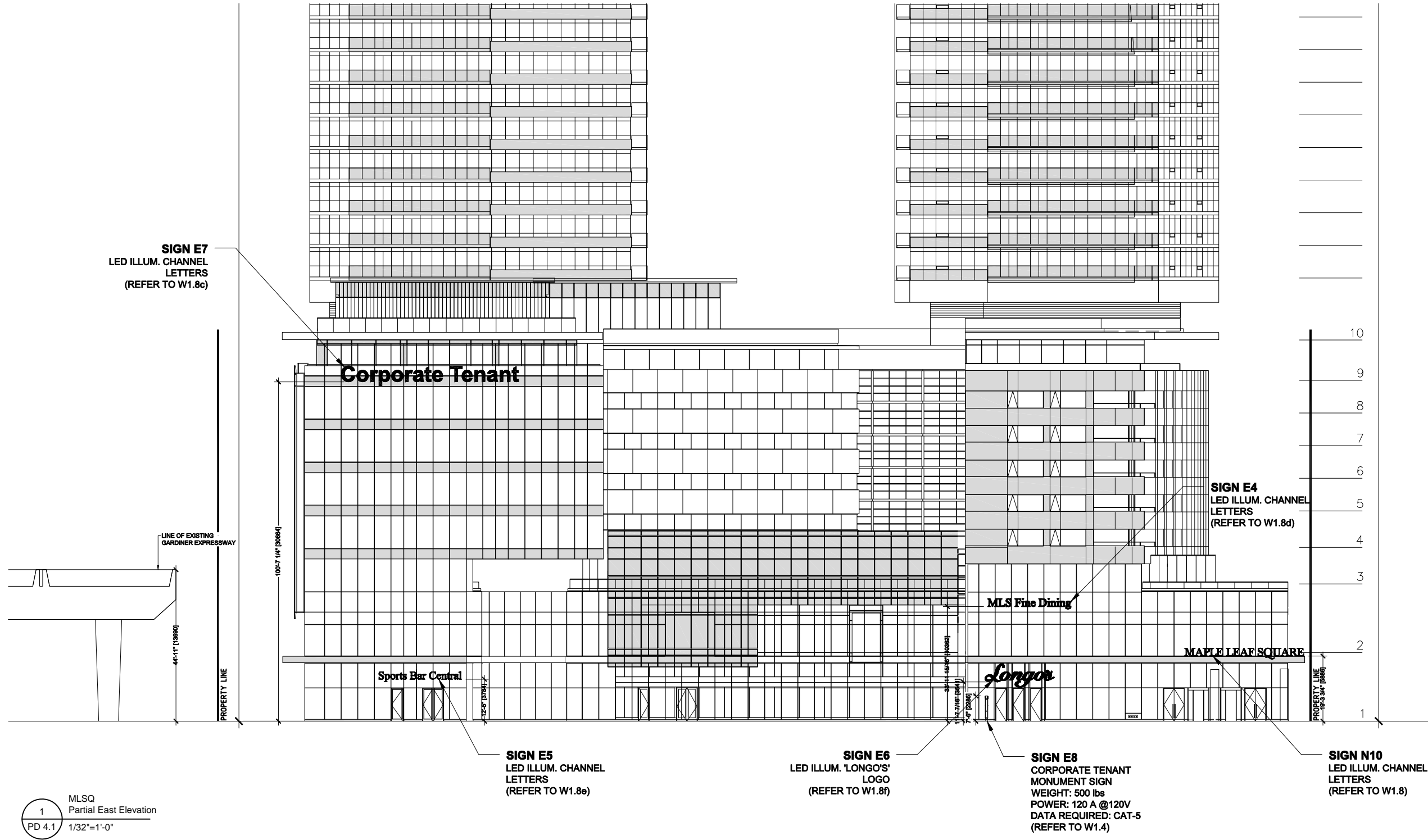
1  
PD4.2



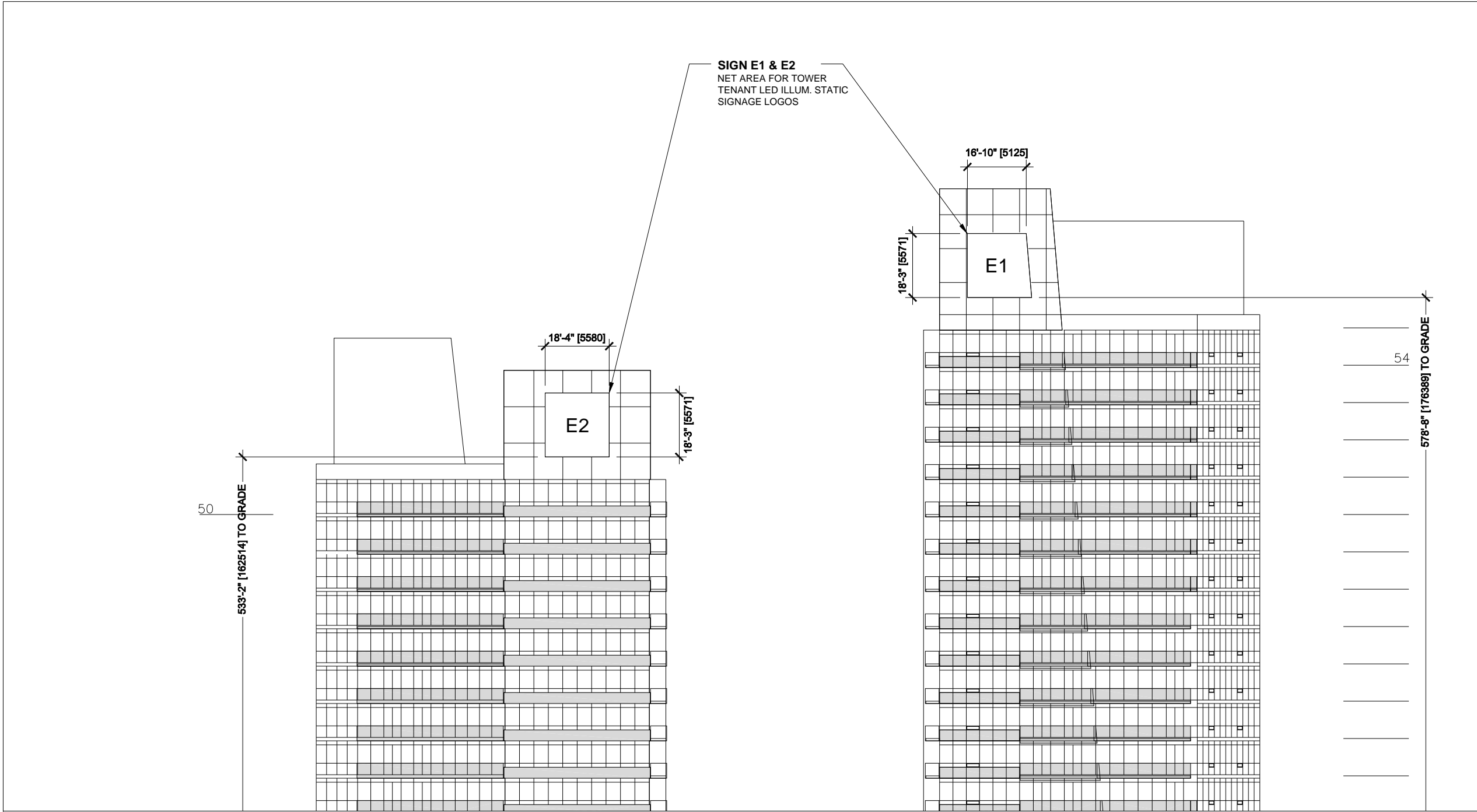
1  
PD4.0  
MLSQ  
East Elevation  
1/64"=1'-0"

1  
PD4.1

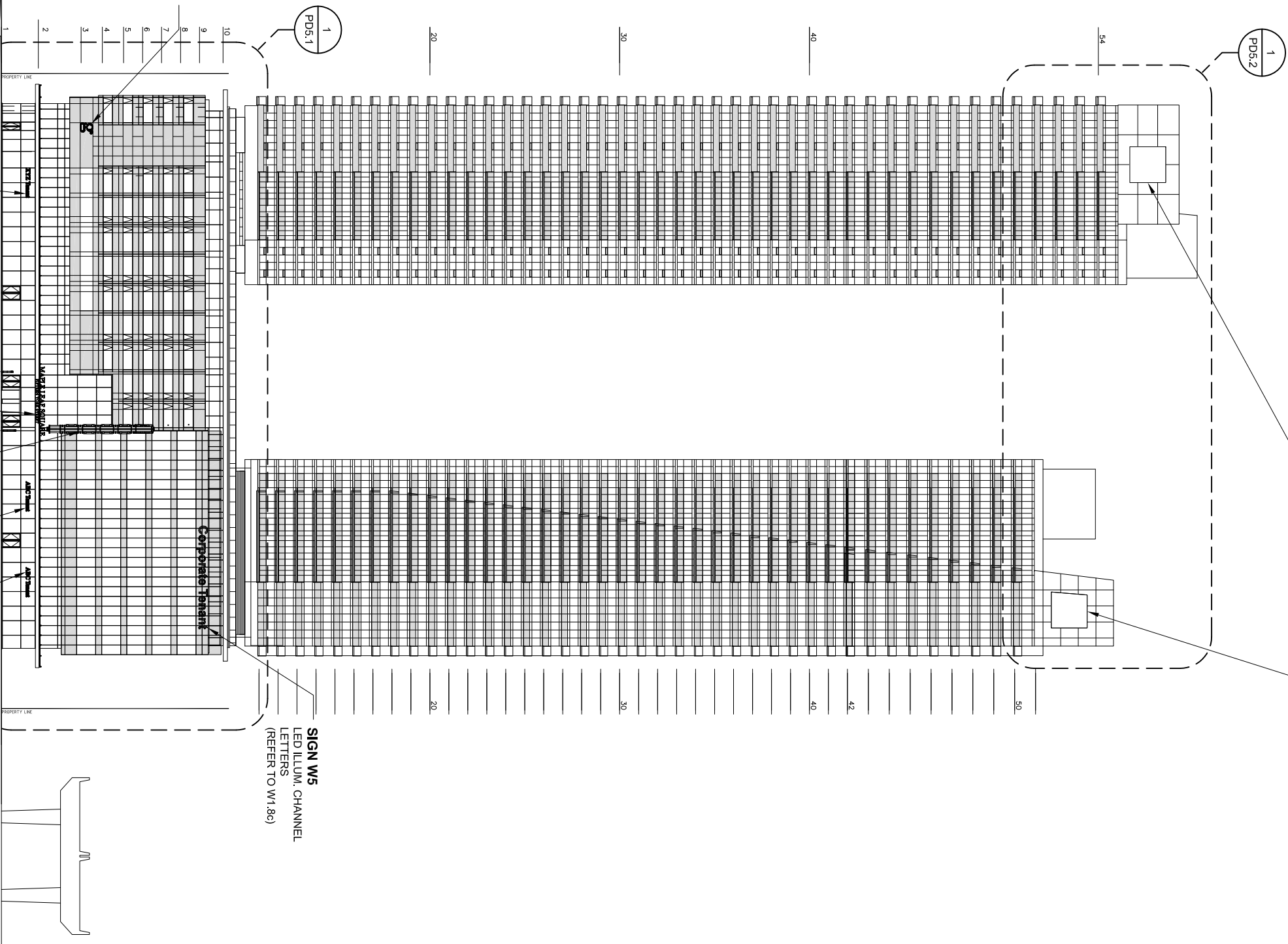




1  
MLSQ  
Partial East Elevation  
PD 4.1 1/32"=1'-0"



**SIGN W1 & W2**  
NET AREA FOR TOWER  
TENANT LED ILLUM. STATIC  
SIGNAGE LOGOS

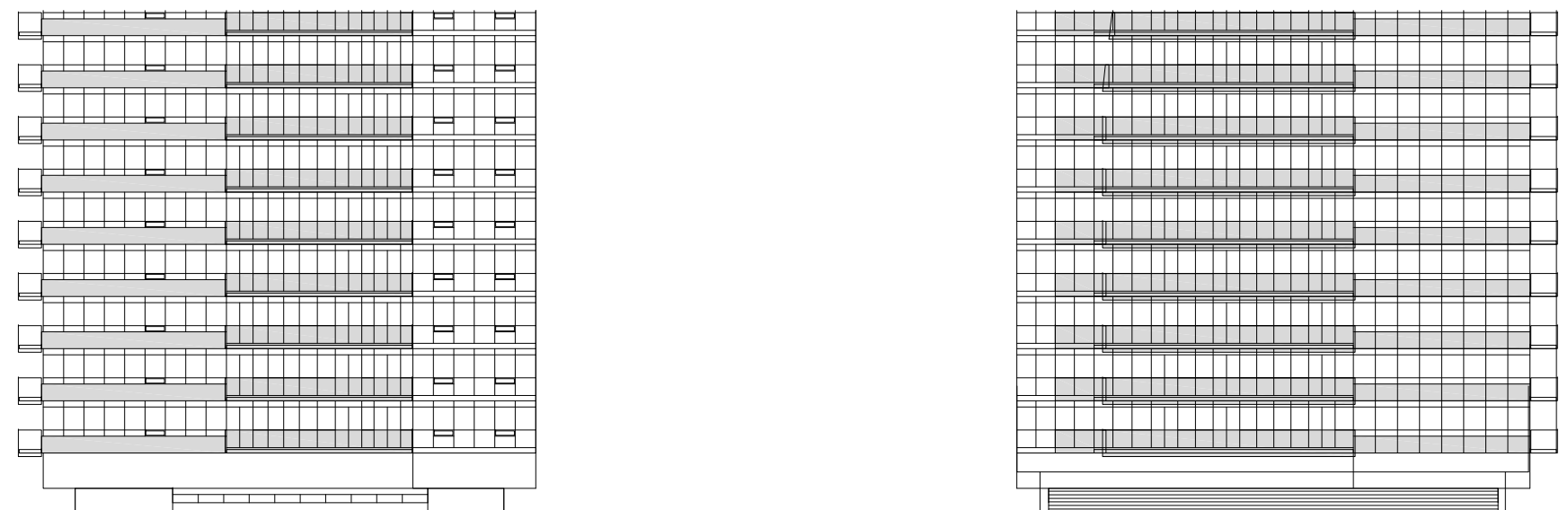


1  
PD5.1

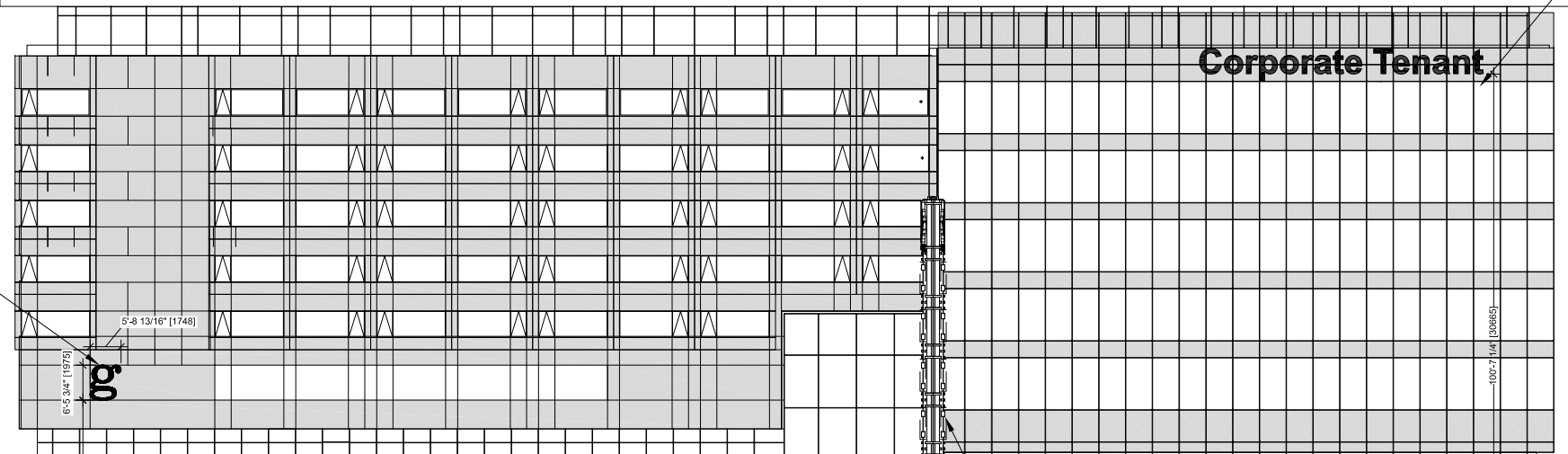
1	MLSQ West Elevation
PD 5.0	1/64"=1'-0"

**SIGN W6**  
HOTEL SIGNAGE TBD  
(REFER TO W1.8)

**SIGN W5**  
LED ILLUM. CHANNEL  
LETTERS  
(REFER TO W1.8c)



**Corporate Tenant**



**MAPLE LEAF SQUARE**  
FIFTEEN YORK STREET

**XYZ Tenant**

**ABC Tenant**

**ABC Tenant**

**SIGN W11**  
LED ILLUM. CHANNEL  
LETTER RETAIL SIGNAGE  
BY TENANT  
(REFER TO W1.8c)

**SIGN W13**  
I.D. PYLON  
WITH MUNICIPAL ADDRESS  
WEIGHT: 127 lbs  
POWER: 12A @ 120V  
(REFER TO W1.3)

**SIGN W10**  
"MAPLE LEAF SQUARE"  
WEIGHT: 225 lbs  
POWER: 30A @ 120V  
(REFER TO W1.8a)

**SIGN W9**  
LED ILLUM. CHANNEL  
LETTER RETAIL SIGNAGE  
BY TENANT  
(REFER TO W1.8c)

**SIGN W8**  
LED ILLUM. CHANNEL  
LETTER RETAIL SIGNAGE  
BY TENANT  
(REFER TO W1.8c)

**SIGN W15**  
CORPORATE TENANT  
MONUMENT SIGN  
WEIGHT: 56,000 lbs  
POWER: 120 A @120V  
DATA REQUIRED: CAT-5  
(REFER TO W1.4)

**SIGN W14**  
TENANT BLADE SIGN  
WEIGHT: 55,000 lbs  
POWER: 120 A @120V  
DATA REQUIRED: CAT-5  
(REFER TO W1.7)

MLSQ  
Partial West Elevation  
PD 5.1  
1/32"=1'-0"

