

APPENDIX B

Administrative Design – Proposed amendment to Chapter 694, Signs, General, of the City of Toronto Municipal Code with respect to implementing a Signage Master Plan on the premises municipally known as 301 Front Street West in the City of Toronto.

1. Amend 694 by adding the following to Schedule B to Ch. 694, Signage Master Plan and Area Specific Amendments.

A. 301 FRONT STREET WEST - Notwithstanding § 694-20. and § 694-21.H. but subject to all other provisions of this Chapter, the premises municipally known as 301 Front Street West may contain only the following first party signs:

(1) A wall sign provided:

- (a) The sign face area shall not exceed 62.7 square metres;
- (b) The height shall not exceed 11.5 metres;
- (c) The sign shall have no more than one sign face; and
- (d) The sign is erected and displayed in the specific location indicated by Map RF4 with respect to the sign labelled Sign A1.

(2) A wall sign provided:

- (a) The sign face area shall not exceed 62.7 square metres;
- (b) The height shall not exceed 11.5 metres;
- (c) The sign shall have no more than one sign face; and
- (d) The sign is erected and displayed in the specific location indicated by Map RF3 with respect to the sign labelled Sign A2.

(3) A wall sign provided:

- (a) The sign face area shall not exceed 62.7 square metres;
- (b) The height shall not exceed 4.5 metres;
- (c) The sign shall have no more than one sign face; and
- (d) The sign is erected and displayed in the specific location indicated by Map RF2 with respect to the sign labelled Sign A3.

(4) A wall sign provided:

- (a) The sign face area shall not exceed 12.07 square metres;
- (b) The height shall not exceed 12.5 metres;
- (c) The sign shall have no more than one sign face; and
- (d) The sign is erected and displayed in the specific location indicated by Maps RF2 and RF5 with respect to the sign labelled Sign A4.

(5) A wall sign provided:

- (a) The sign face area shall not exceed 23.0 square metres;
- (b) The height shall not exceed 16.0 metres;
- (c) The sign shall have no more than one sign face; and

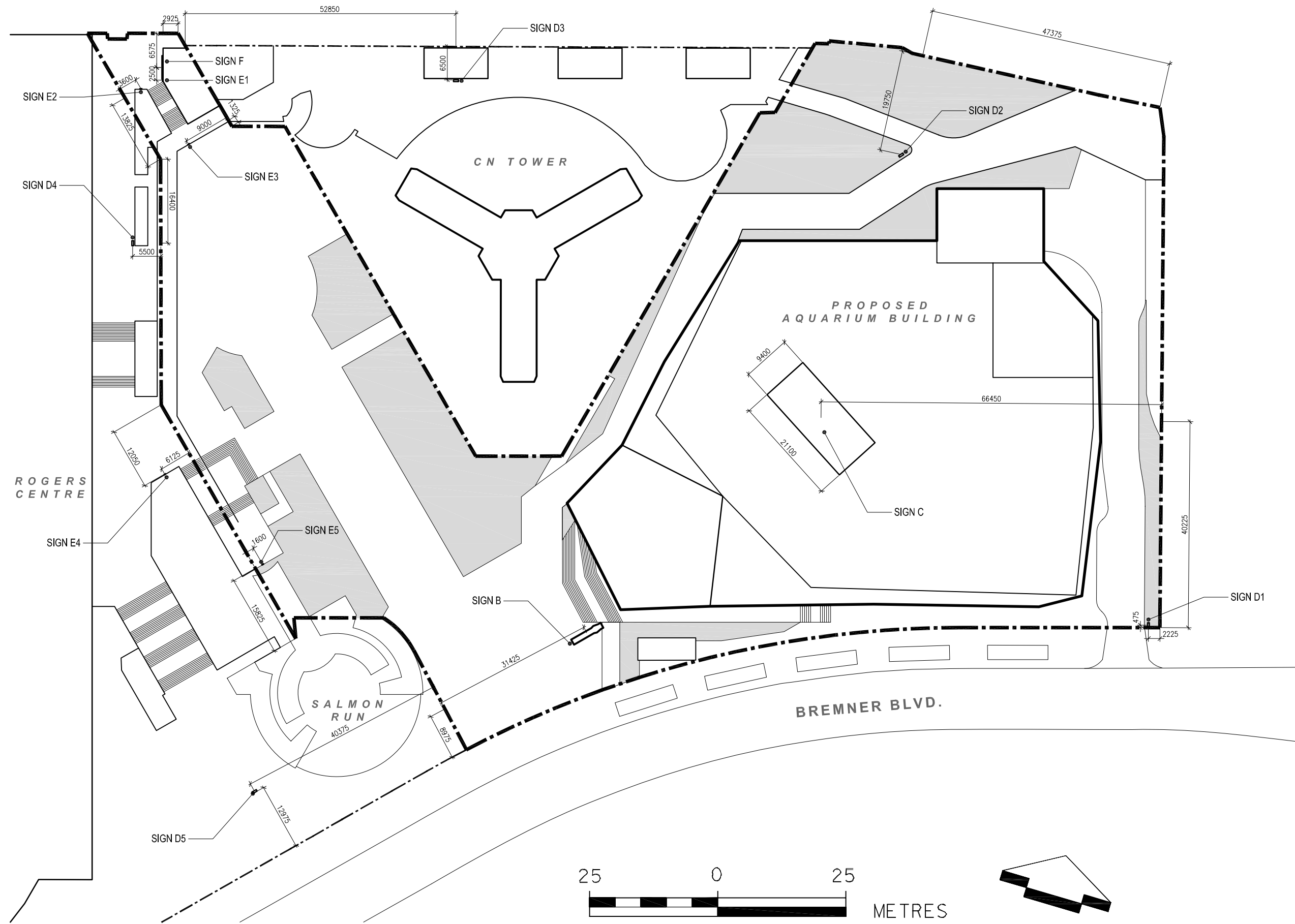
- (d) The sign is erected and displayed in the specific location indicated by Maps RF4 and RF5 with respect to the sign labelled Sign A5.
- (6) A wall sign provided:
- (a) The sign face area shall not exceed 0.12 square metres;
 - (b) The height shall not exceed 1.5 metres;
 - (c) The sign shall have no more than one sign face;
 - (d) The sign shall not be illuminated; and
 - (e) The sign is erected and displayed in the specific location indicated by Map RF1 with respect to the sign labelled Sign E1.
- (7) A wall sign provided:
- (a) The sign face area shall not exceed 0.16 square metres;
 - (b) The height shall not exceed 1.5 metres;
 - (c) The sign shall have no more than one sign face;
 - (d) The sign shall not be illuminated; and
 - (e) The sign is erected and displayed in the specific location indicated by Map RF1 with respect to the sign labelled Sign E2.
- (8) A wall sign provided:
- (a) The sign face area shall not exceed 0.16 square metres;
 - (b) The height shall not exceed 1.5 metres;
 - (c) The sign shall have no more than one sign face;
 - (d) The sign shall not be illuminated; and
 - (e) The sign is erected and displayed in the specific location indicated by Map RF1 with respect to the sign labelled Sign E3.
- (9) A wall sign provided:
- (a) The sign face area shall not exceed 0.16 square metres;
 - (b) The height shall not exceed 1.5 metres;
 - (c) The sign shall have no more than one sign face;
 - (d) The sign shall not be illuminated; and
 - (e) The sign is erected and displayed in the specific location indicated by Map RF1 with respect to the sign labelled Sign E4.
- (10) A wall sign provided:
- (a) The sign face area shall not exceed 0.16 square metres;
 - (b) The height shall not exceed 1.5 metres;
 - (c) The sign shall have no more than one sign face;
 - (d) The sign shall not be illuminated; and
 - (e) The sign is erected and displayed in the specific location indicated by Map RF1 with respect to the sign labelled Sign E5.
- (11) A wall sign provided:
- (a) The sign face area shall not exceed 6.26 m² square metres;
 - (b) The height shall not exceed 5.0 metres;

- (c) The sign shall have no more than one sign face; and
 - (d) The sign is erected and displayed in the specific location indicated by Map RF1 with respect to the sign labelled Sign F.
- (12) A ground sign containing electronic moving copy provided:
- (a) The sign face area shall not exceed 21.0 square metres;
 - (b) The height shall not exceed 10.0 metres;
 - (c) The sign shall have no more than two sign faces; and
 - (d) The sign is erected and displayed in the specific location indicated by Maps RF1, RF2, RF3, RF4 and RF5 with respect to the sign labelled Sign B.
- (13) A ground sign provided:
- (a) The sign face area shall not exceed 2.42 square metres;
 - (b) The height shall not exceed 3.7 metres;
 - (c) The sign shall have no more than two sign faces;
 - (d) The sign shall not be illuminated; and
 - (e) The sign is erected and displayed in the specific location indicated by Map RF1 with respect to the sign labelled Sign D1.
- (14) A ground sign provided:
- (a) The sign face area shall not exceed 2.42 square metres;
 - (b) The height shall not exceed 3.7 metres;
 - (c) The sign shall have no more than two sign faces;
 - (d) The sign shall not be illuminated; and
 - (e) The sign is erected and displayed in the specific location indicated by Map RF1 with respect to the sign labelled Sign D2.
- (15) A ground sign provided:
- (a) The sign face area shall not exceed 2.42 square metres;
 - (b) The height shall not exceed 3.7 metres;
 - (c) The sign shall have no more than two sign faces;
 - (d) The sign shall not be illuminated; and
 - (e) The sign is erected and displayed in the specific location indicated by Map RF1 with respect to the sign labelled Sign D3.
- (16) A ground sign provided:
- (a) The sign face area shall not exceed 2.42 square metres;
 - (b) The height shall not exceed 3.7 metres;
 - (c) The sign shall have no more than two sign faces;
 - (d) The sign shall not be illuminated; and
 - (e) The sign is erected and displayed in the specific location indicated by Map RF1 with respect to the sign labelled Sign D4.
- (17) A ground sign provided:
- (a) The sign face area shall not exceed 2.42 square metres;

- (b) The height shall not exceed 3.7 metres;
- (c) The sign shall have no more than two sign faces;
- (d) The sign shall not be illuminated; and
- (e) The sign is erected and displayed in the specific location indicated by Map RF1 with respect to the sign labelled Sign D5.

(18) A roof sign provided:

- (a) The sign face area shall not exceed 200.0 square metres;
- (b) The sign must be erected on and entirely supported by the roof of the building with a sign face which projects no more than 0.1 metre from the roof;
- (c) The sign shall have no more than one sign face;
- (d) The sign shall not be illuminated; and
- (e) The sign is erected and displayed in the specific location indicated by Map RF1 with respect to the sign labelled Sign C.



ALL DIMENSIONS ARE FROM CENTRE OF SIGNAGE

±97.932 TOP OF HIGH ROOF
±94.500 TOP OF PARAPET ROOF
±84.000 TOP OF SLAB UPPER LEVEL
±81.000 GRADE

PROPERTY LINE

PROPERTY LINE

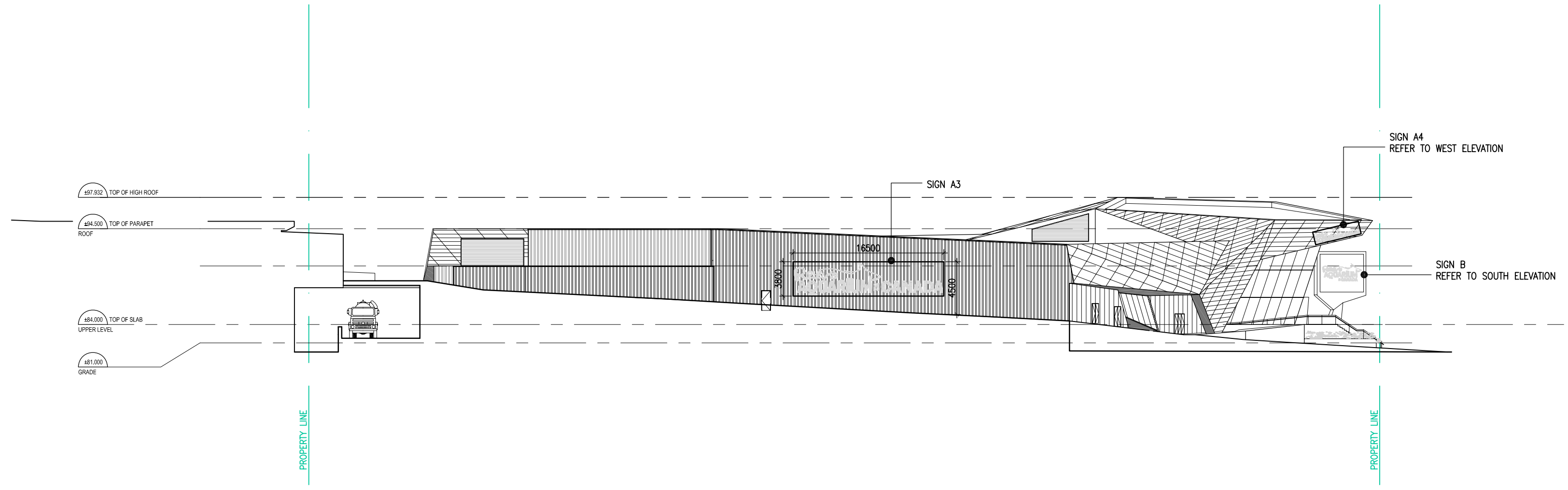
SIGN A3

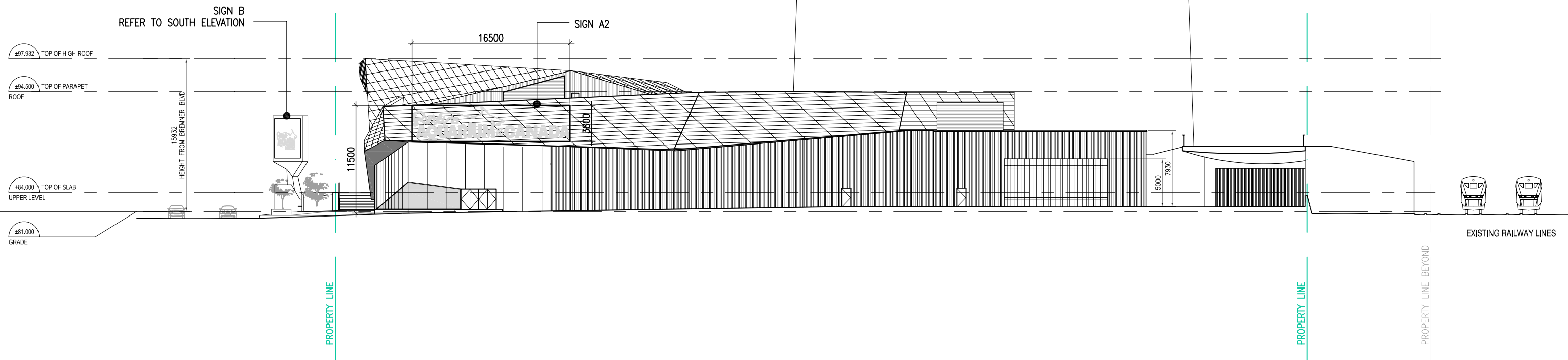
SIGN A4
REFER TO WEST ELEVATION

SIGN B
REFER TO SOUTH ELEVATION

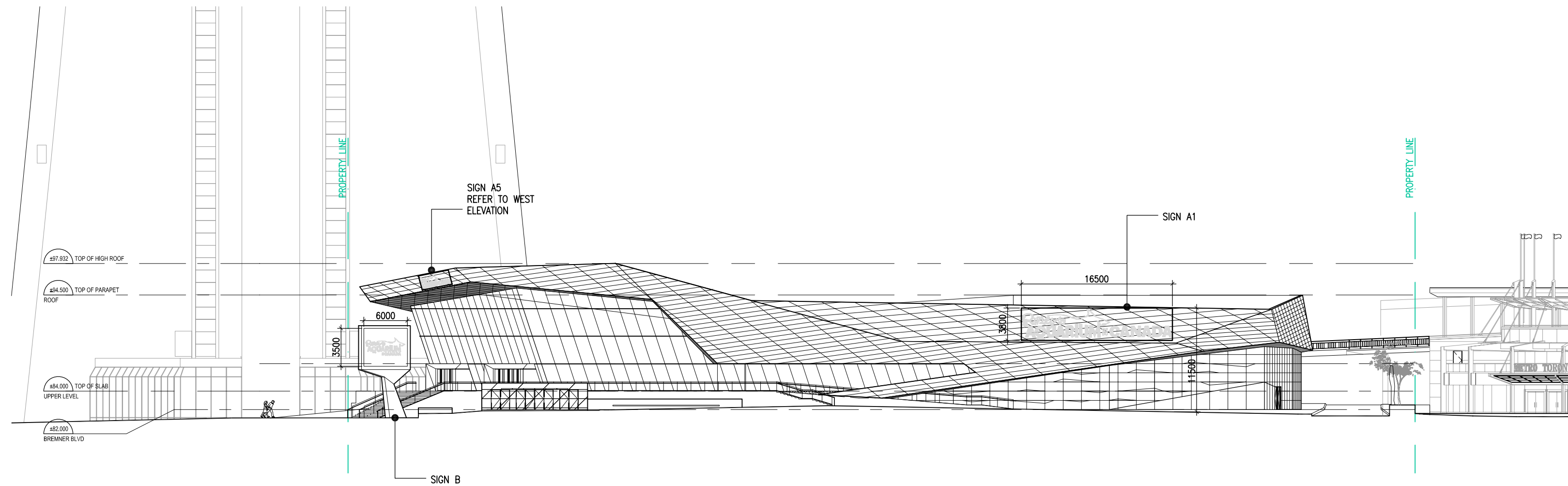
16500
3600
4500

NORTH ELEVATION

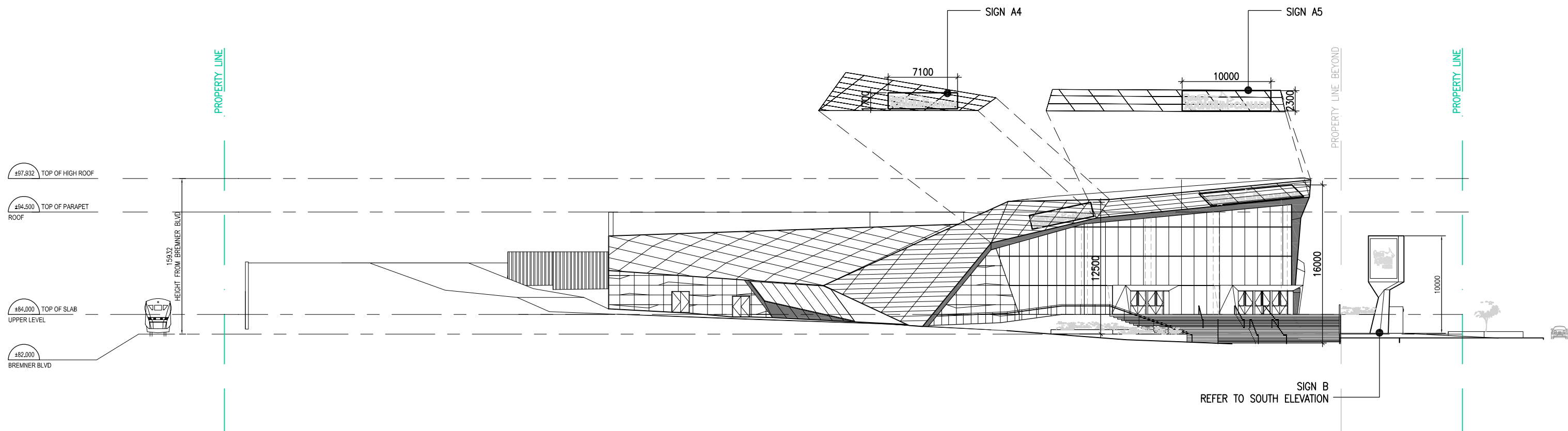




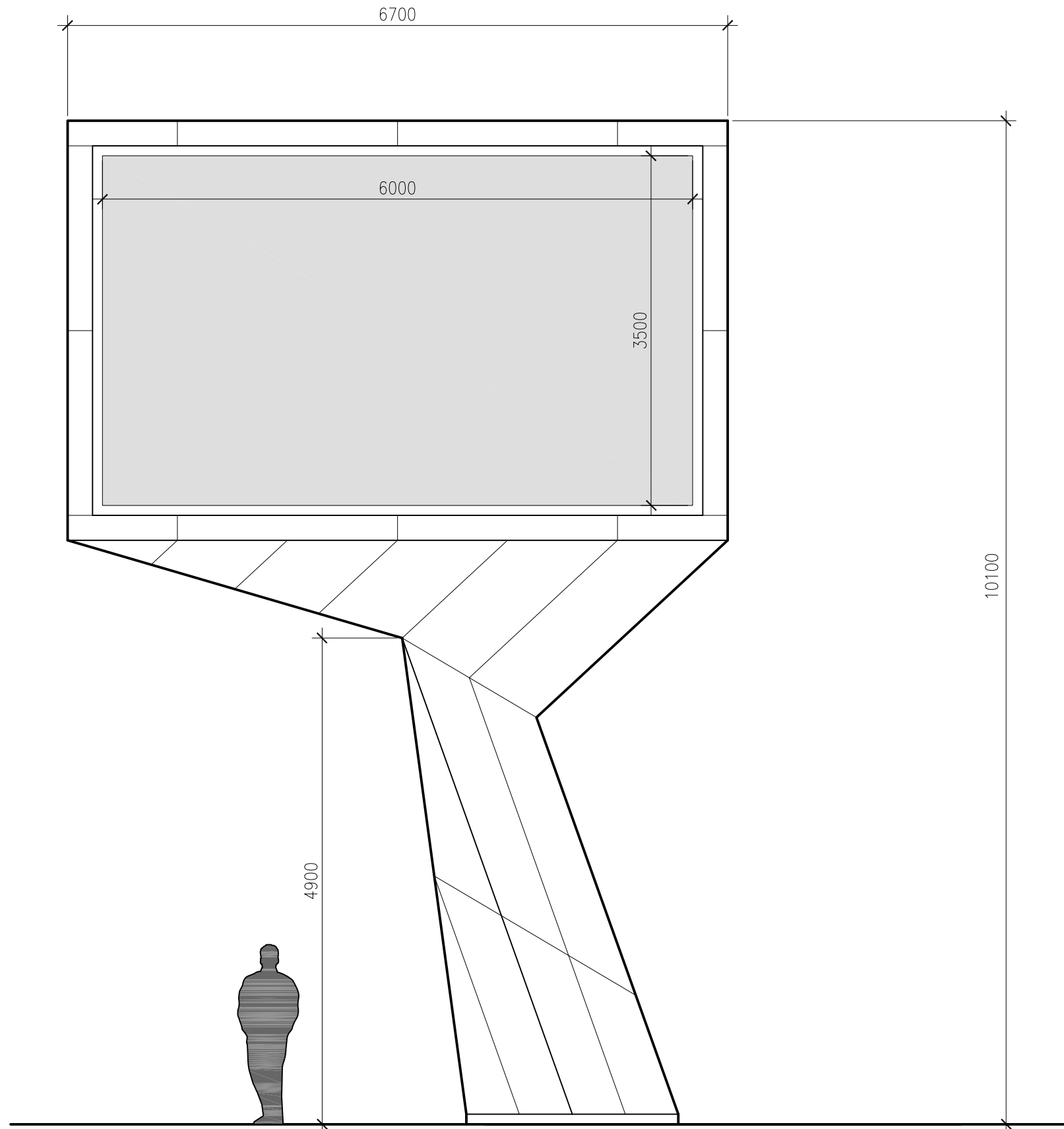
EAST ELEVATION



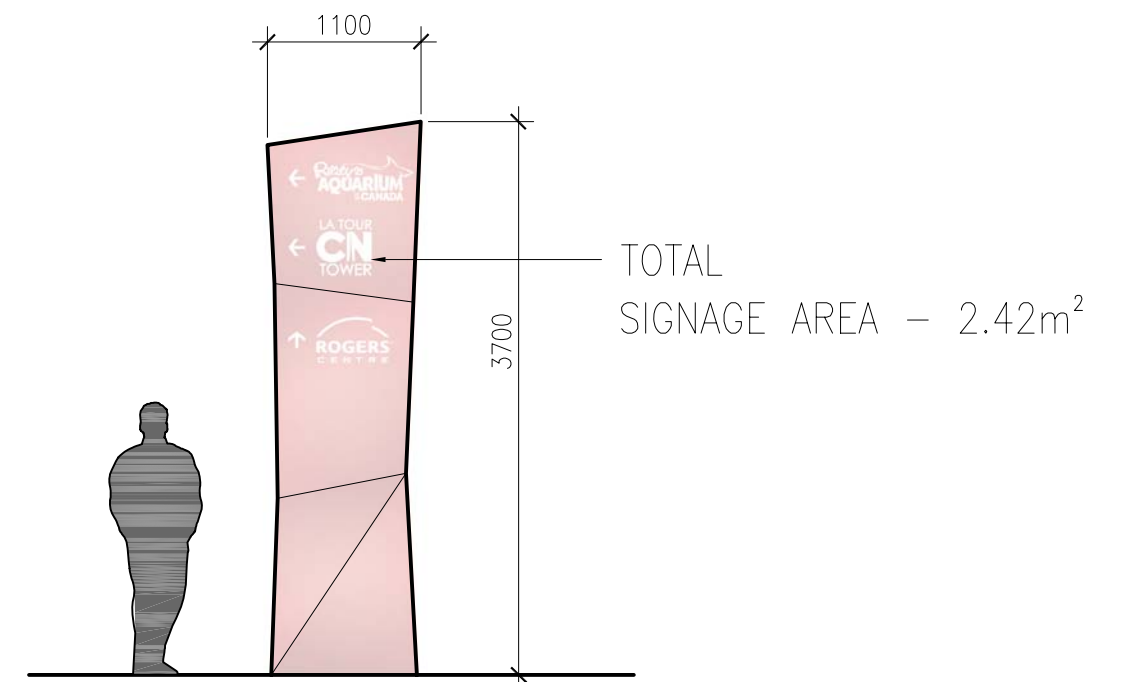
SOUTH ELEVATION



WEST ELEVATION



SIGN B



SIGN D