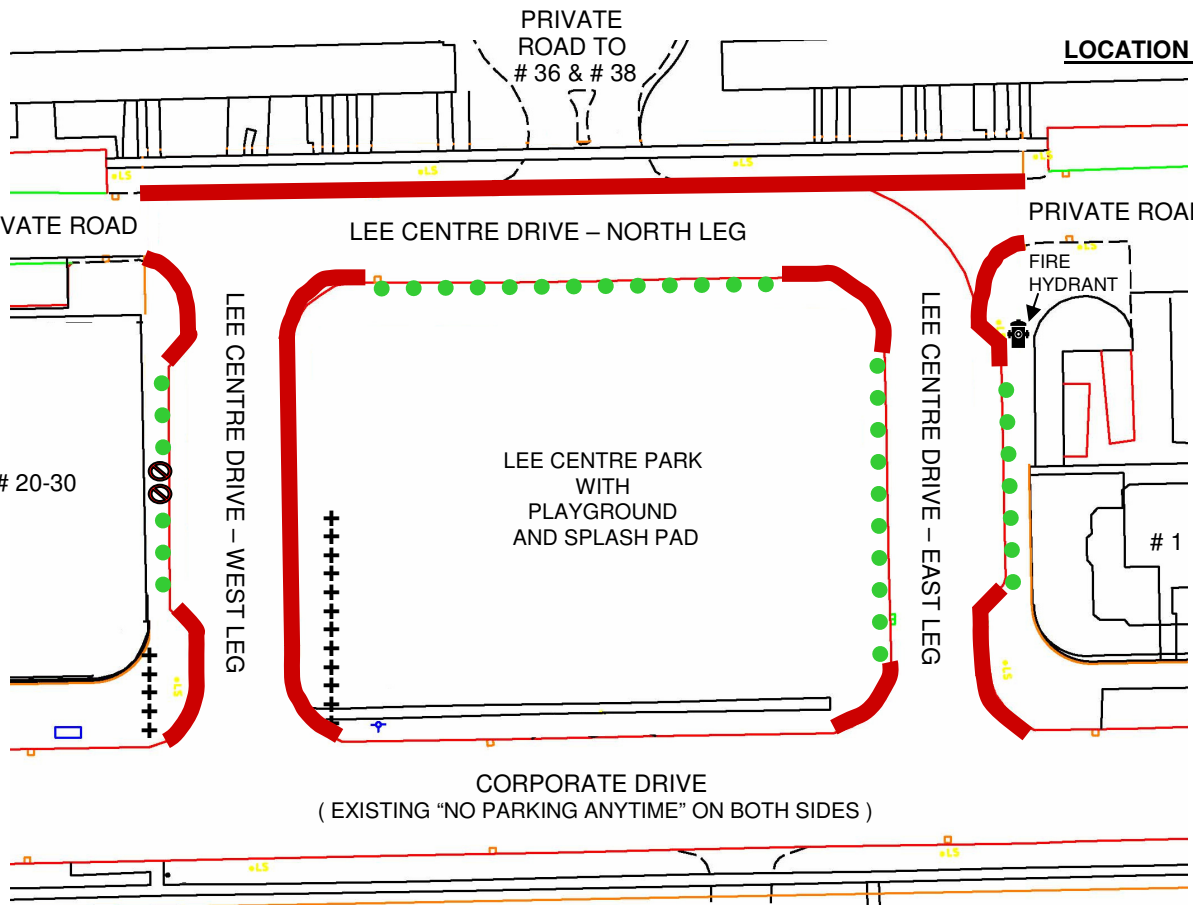




KEY MAP



LEGEND

- ++++ Existing No Parking Anytime Parking Regulation on west leg of Lee Centre Drive
-  Proposed No Standing Anytime

-  Proposed No Parking Anytime (in truck loading area)

-  Proposed Pay and Display Parking Machines – to operate 24 hours, 7 days a week, rates \$1.50 per hour, 3 hour maximum



TRANSPORTATION SERVICES

TRAFFIC OPERATIONS
Scarborough District

SCALE:	N.T.S.	PROPOSED PARKING REGULATIONS, MACHINES AND NO STANDING ZONES LEE CENTRE DRIVE	FILE NUMBER: D09-3538395	
DATE:	JAN. 25, 2010		ATTACHMENT	WARD
DRAFTING:	K.S.		3	38