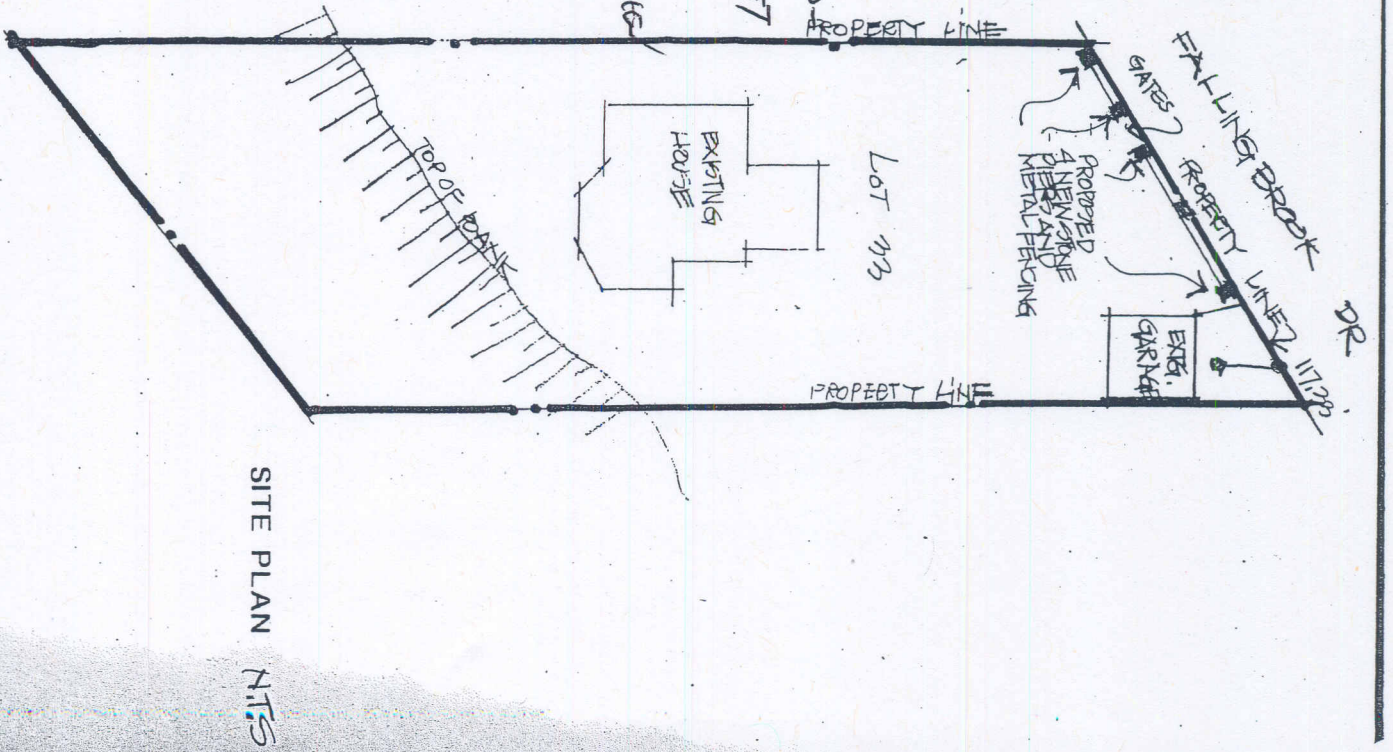


STONE CAP 4"
 2" DRIP OVERHANG
 4" STONE VENEER
 ADDED TO BLOCK
 WITH METAL TIE ANCHORS
 1.4" x 1.4" CONC
 BLOCK 5 HOLES
 DOTTED
 WROUGHT IRON FENCE
 AND GATE TO LATER
 DETAIL SHOWN DOTTED.
 GRADE
 2.0" x 8.0" POURED
 CONO. PIER
 3.0" x 3.0" x 8.0" DEEP
 POURED FOOTING
 STONE PIER ELEVATION
 scale: 1/2" = 1'0"

STONE
 GATES
 height of
 iron approx
 4 FEET
 4 inches
 MAX. 7 FEET HIGH
 (4" cap)

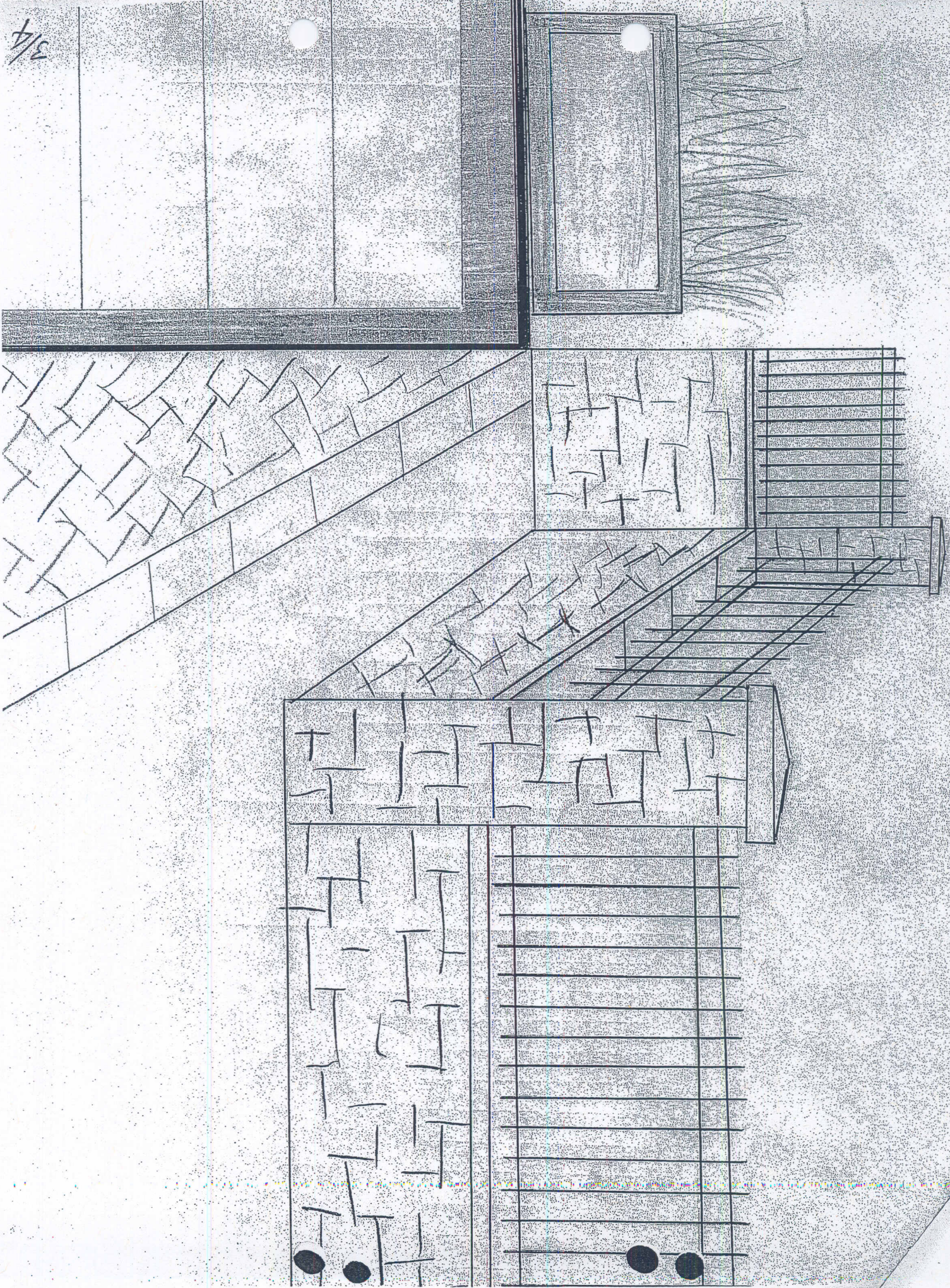
distance between
 stone about
 15 FEET

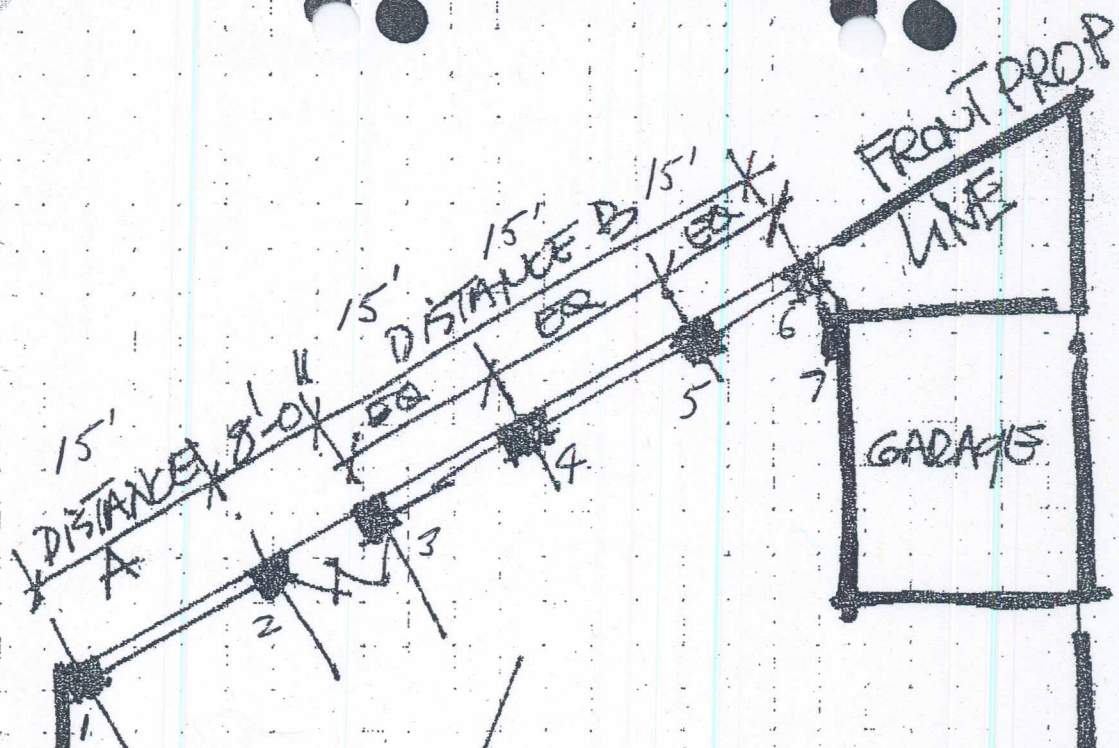


PROPOSED FENCE DETAILS
 ONE FALLINGBROOK DRIVE
 november 2008



3/4





OVER 15!

- ① LOCATE PIERS FOR GATE
- ② MEASURE DISTANCE A
- ③ MEASURE DISTANCE B.
- ④ PUT STEEL REIN. PIPES
1 1/2" DIA. WHERE PIERS
ARE GOING.
- ⑤ USE STRIP. TO SEE
LEVEL.