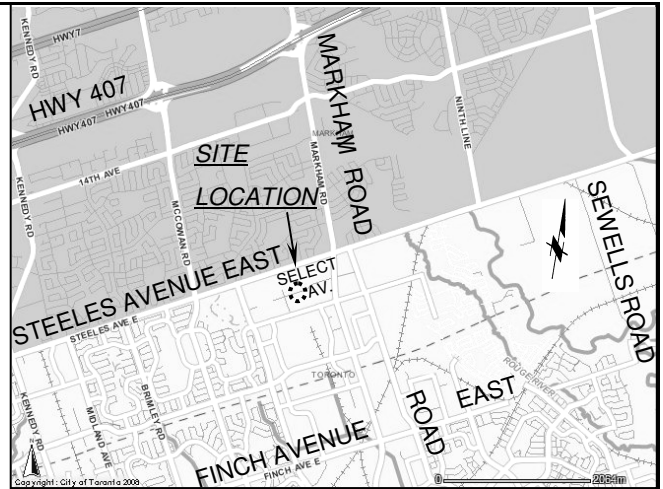
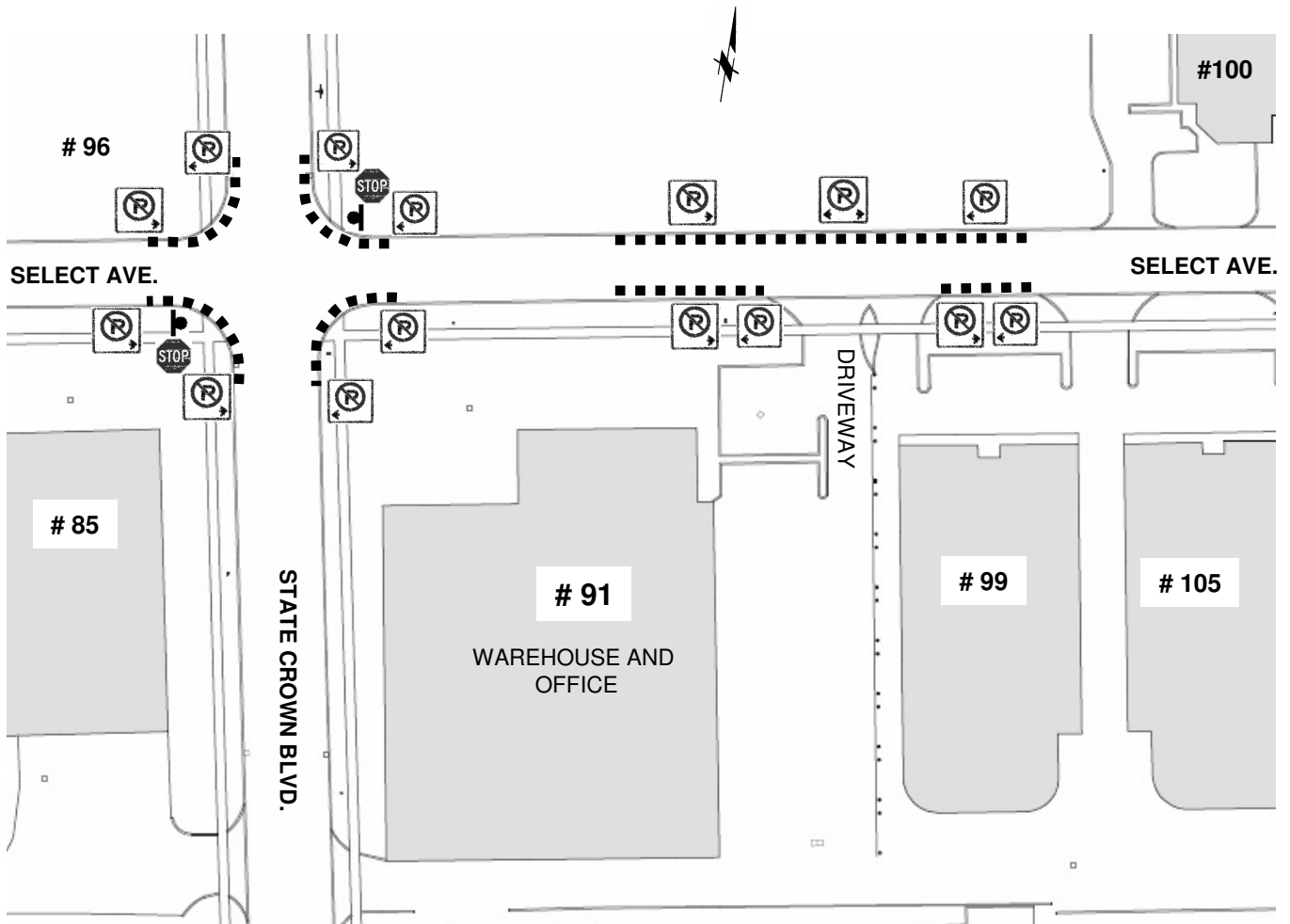


# KEY MAP



# LOCATION MAP



# LEGEND



PROPOSED  
"NO PARKING" ANYTIME REGULATION  
( INCLUDES A 15 METRE CORNER RESTRICTION AT THE INTERSECTION &  
ALSO AN AREA WITHIN 27 METRES OF THE SUBJECT DRIVEWAY )



EXISTING  
STOP  
SIGN



TRANSPORTATION SERVICES

TRAFFIC OPERATIONS  
Scarborough District

SCALE:	N.T.S.	PROPOSED "NO PARKING" ANYTIME REGULATIONS ON SELECT AVENUE ( NEAR # 91 SELECT AVENUE – EAST OF STATE CROWN BOULEVARD )	FILE NUMBER: D10-3771569	
DATE:	MAY 12, 2010		ATTACHMENT	WARD
DRAFTING:	K.S.		2	41