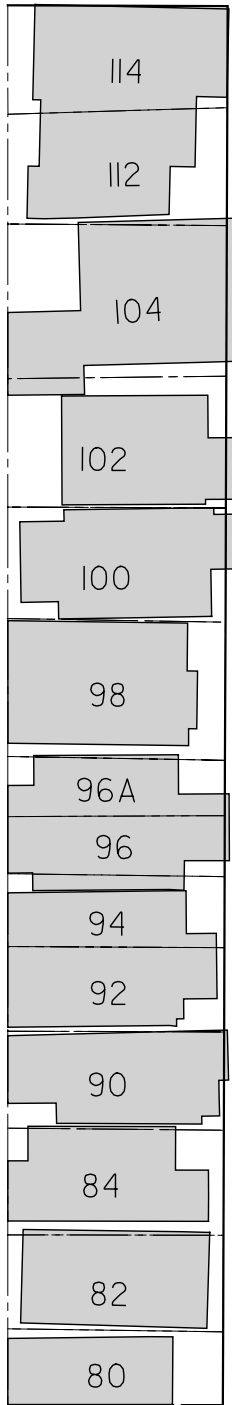




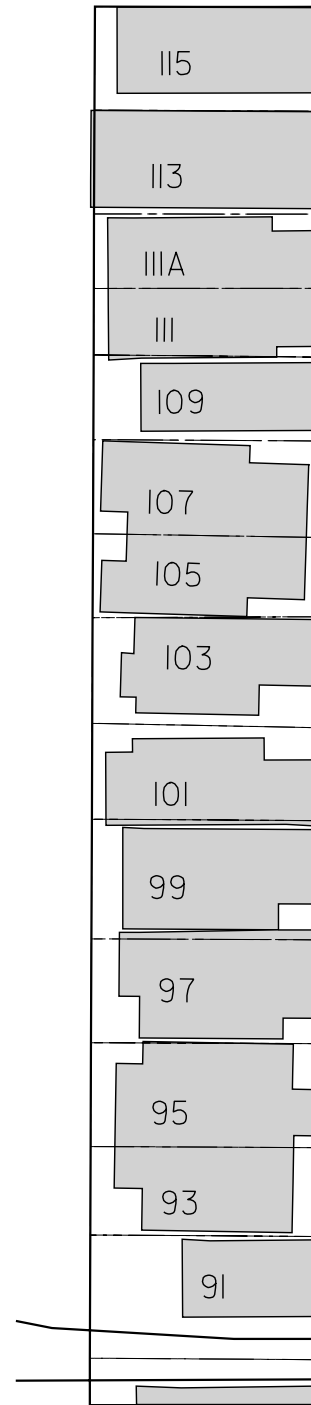
SHANLY STREET



74.5m

7.0m

WESTMORELAND AVENUE



LEGEND

PROPOSED DISABLED PERSONS'
LOADING ZONE 16th DAY TO THE
LAST DAY OF EACH MONTH
APR. 1 TO NOV. 30 AND DEC. 1 TO
MAR. 31, 8:00a.m. - 6:00p.m.



NOTE:

INFORMATION ON THIS PLAN IS BASED
ON OFFICE RECORDS AND IS SUBJECT
TO FIELD VERIFICATION.

ALL DIMENSIONS ARE APPROXIMATE.

WESTMORELAND AVENUE PROPOSED DISABLED PERSONS' LOADING ZONE