

315th  
WILDMILK  
190

80'-0" (24384)

26'-0" (7924)

12'-0" (3675)

12'-0" (3675)

6'-8 7/8" (2,039)

75'-0" (20,668)

28 3 5/8 (8,625)

13'-5"

17'-5 1/2"

7'-0"

6'-8 7/8" (2,054)

28 3 1/8 (8,613)

35'-0" (10,668)

3'-6 3/8 (1,098)

7'-0"

2'-11 3/4 (2,119)

2 SIDE WALK

HYDRO POST

PROPERTY LINE

No 1192  
IND STORED BULD.  
CURZON CARE

PROPOSED  
BULDOZED  
C&F EROSION  
CONTROL ASPHALT

REMOVE 25" RENEWABLE IRON GUARD

13'-5" (4087)

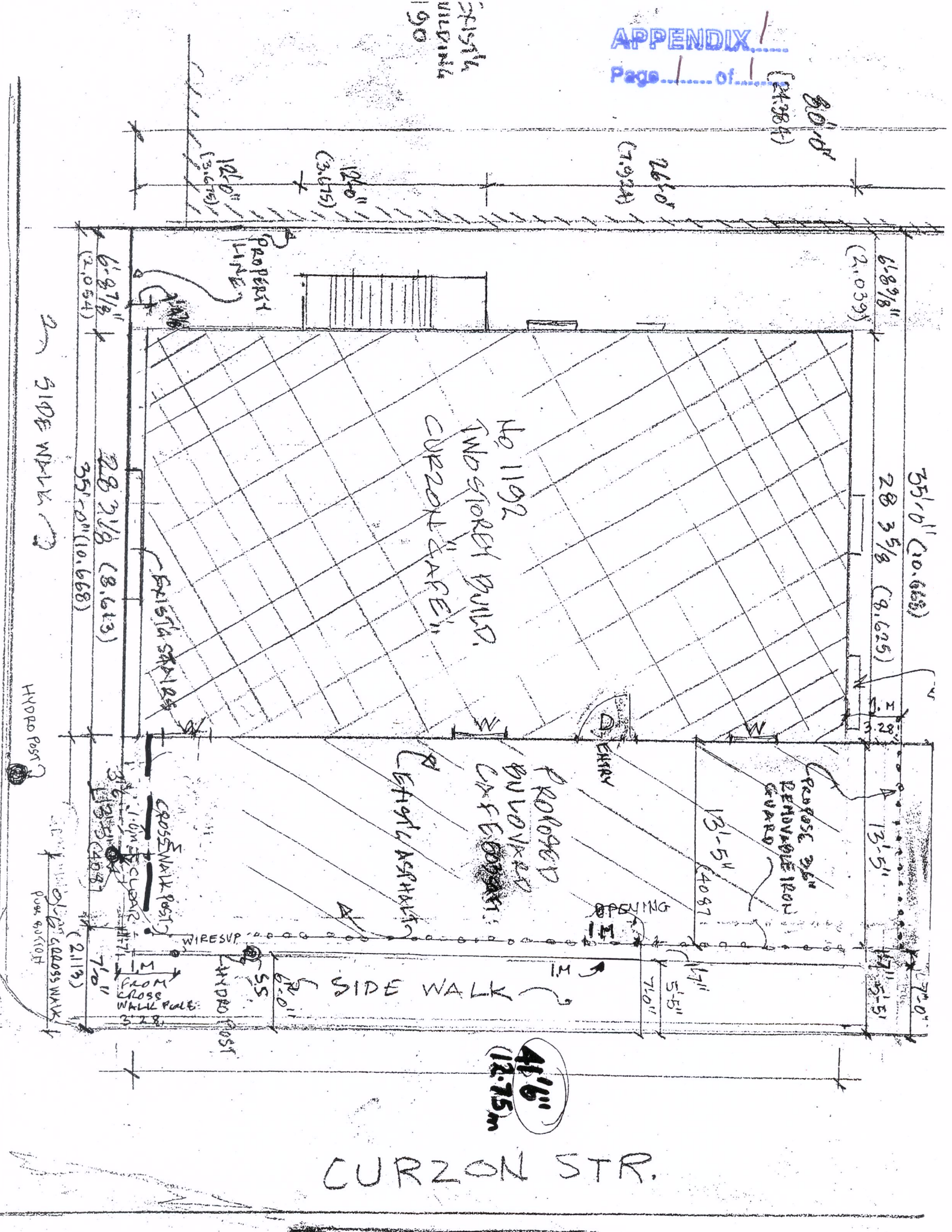
ENTRANCE

OPENING

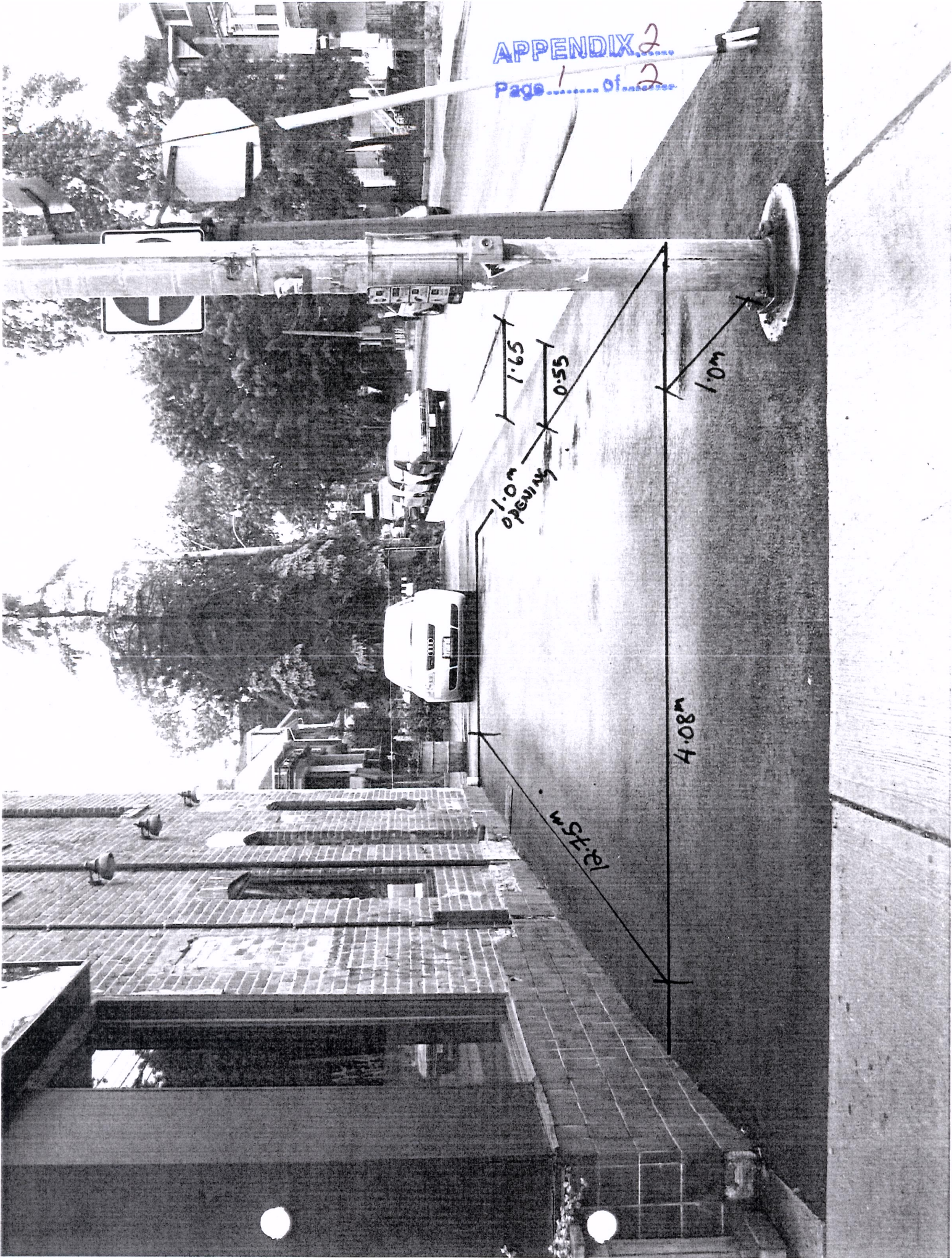
SIDE WALK

41'-6" (12,75m)

CURZON STR.







1.0m opening

1.65

0.55

1.0m

4.08m

12.75m





