



## STAFF REPORT INFORMATION ONLY

### Supplementary Report - Control of European Gypsy Moth Outbreak in the City of Toronto

<b>Date:</b>	November 20, 2012
<b>To:</b>	City Council
<b>From:</b>	Jim Hart, General Manager, Parks, Forestry and Recreation
<b>Wards:</b>	All Wards
<b>Reference Number:</b>	P:\2012\Cluster A\PFR\CC28-112712-AFS#16740

#### **SUMMARY**

---

This report provides additional information requested by the Parks and Environment Committee at its meeting of November 9<sup>th</sup> relating to Item PE17.2. The General Manager of Parks, Forestry and Recreation was requested to submit to City Council, for its meeting on November 27, 2012, a city-wide map indicating all areas proposed for aerial treatment in 2013. In addition, Parks, Forestry and Recreation is providing, for information, a detailed map on an additional area identified at Cherry Beach for aerial spray treatment to control European Gypsy Moth.

#### **Financial Impact**

There is no additional financial impact resulting from the inclusion of the Cherry Beach location for aerial spray treatment.

#### **DECISION HISTORY**

At its meeting of November 9, 2012, the Parks and Environment Committee requested that the General Manager of Parks, Forestry and Recreation submit to City Council, for its meeting on November 27, 2012, a city-wide aerial map of treatment areas.

<http://app.toronto.ca/tmmis/viewAgendaItemHistory.do?item=2012.PE17.2>

#### **ISSUE BACKGROUND**

A report entitled "Control of European Gypsy Moth Outbreak in the City of Toronto" dated October 22, 2012, containing five recommendations, was adopted by the Parks and Environment Committee on November 9, 2012.

<http://www.toronto.ca/legdocs/mmis/2012/pe/bgrd/backgroundfile-51501.pdf>

## COMMENTS

A city-wide map indicating all of the proposed aerial spray treatment areas is attached to this report as Attachment No. 1.

Subsequent to the Parks and Environment Committee meeting on November 9, 2012, staff identified an additional aerial spray block for treatment, located at Cherry Beach in Ward 30. Information on this block is included in the following table and in a detailed map, Attachment No. 2.

Location	Ward	Approximate Number of Egg Masses Per Hectare	Expected Threat	Approximate Spray Area (ha)	Proposed Treatment Option(s)
Cherry Beach	30	11,172	Severe defoliation of selected trees	5.6	Aerial spray of Btk.

Additional survey information indicates that this area should also be treated in 2013 in order to effectively control European Gypsy Moth.

## CONTACT

Jason Doyle, Director, Urban Forestry, Tel: 416 392-1894, Fax: 416 338-2434

E-mail: [jcdoyle@toronto.ca](mailto:jcdoyle@toronto.ca)

## SIGNATURE

---

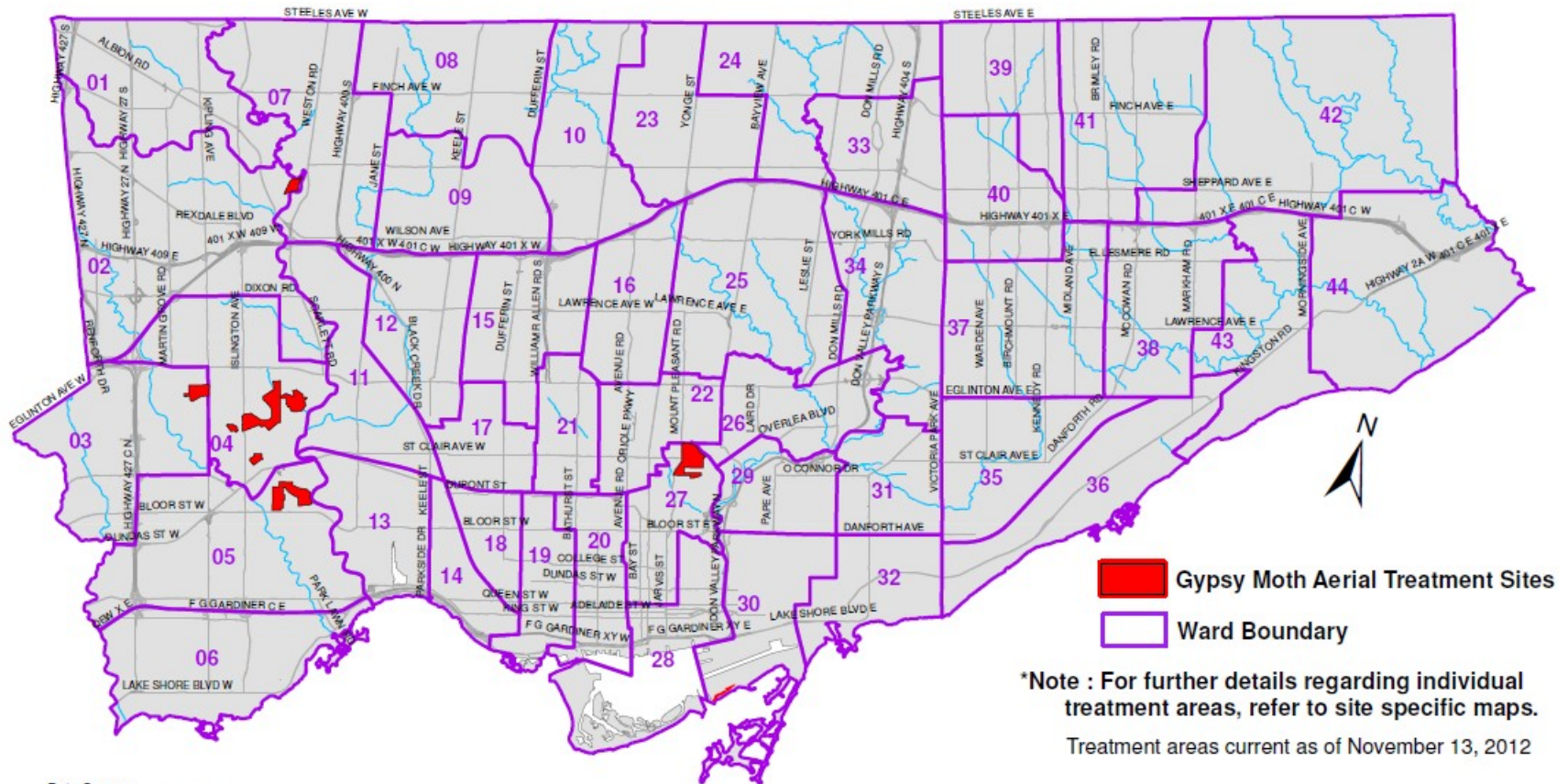
Jim Hart,  
General Manager, Parks, Forestry and Recreation

## ATTACHMENTS

Attachment No. 1 – map of aerial spray treatment areas city-wide

Attachment No. 2 – map of aerial spray treatment block in Cherry Beach

# 2013 Proposed Gypsy Moth Aerial Treatment Sites



Data Source:  
 Base Map - Toronto Street Centreline  
 Geospatial Competency Centre, 2012  
 Spray Locations: Urban Forestry, 2012

This map is intended for general planning purposes only.  
 For more detailed information on individual treatment areas,  
 refer to the specific area treatment map



## 2013 Gypsy Moth Aerial Treatment Area: Cherry Beach



### Legend

 **Cherry Beach Aerial Treatment Boundary**

**Total Area for Treatment: 5.6 ha**

**City Ward: 30**

**Closest Major Intersection:  
Lake Shore Blvd. E. & Cherry St.**