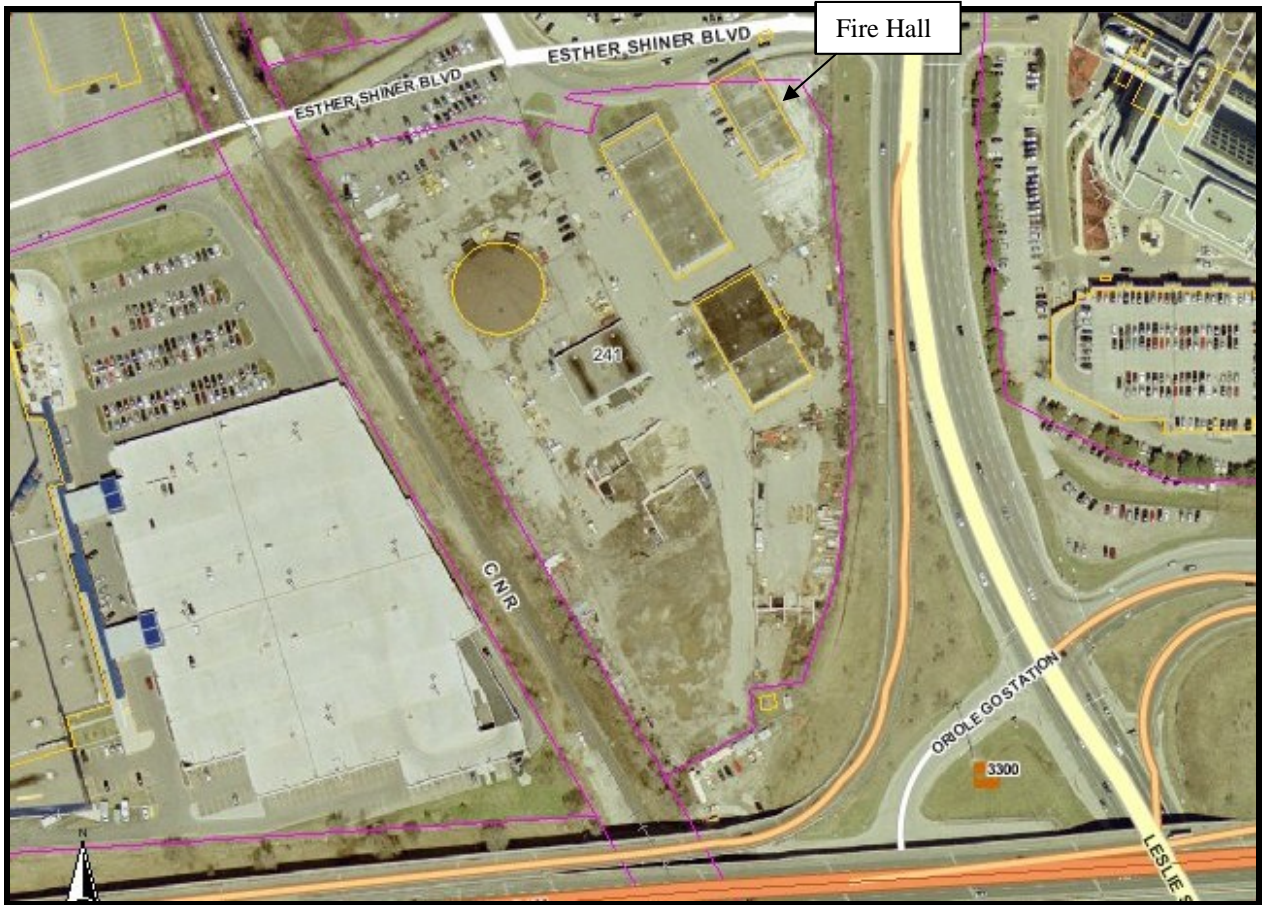


**Appendix D: Oriole Yard at 251 Esther Shiner Boulevard**



## **Appendix D1: Oriole Yard Functions**

The yard contains a maintenance garage formerly used by Fleet Services, a one storey building and garage used by PF&R for its offices and storage of equipment, a salt dome that is under Transportation Services' jurisdiction, and another one storey building containing Transportation Services' offices, garages, and storage rooms. A City fuel location with underground storage tanks is located at the north entrance.

In addition, Fire Services operates Fire Hall 116 which is located on the northeast corner of the property. This fire hall and the land it occupies are not intended to be surplus. Any future disposition of the balance of Oriole Yard will require a severance from the building and accessory lands occupied by Fire Services.

Transportation Services provides road operations, with a service area bounded by Yonge Street to the west, Victoria Park Avenue to the east, Steeles to the north and Moore Avenue to the south. Associated with the salt dome is portion of the yard set aside for a winter maintenance depot which is used by snow removal contractors during the winter months. Transportation Services operates 4 winter maintenance contracts out of this location.

Parks, Forestry & Recreation has 2 regional parks operations and 1 regional Forestry operation in Oriole Yard. The services include grass cutting, litter picking, sports fields grooming, flower bed maintenance and maintenance for parks maintenance in Wards 23, 24, 25, 33 and 34. Forestry services include tree trimming, hazard tree abatement, natural resource area maintenance and sustainability program development in Wards 24, 25, 26, 33 and 34.