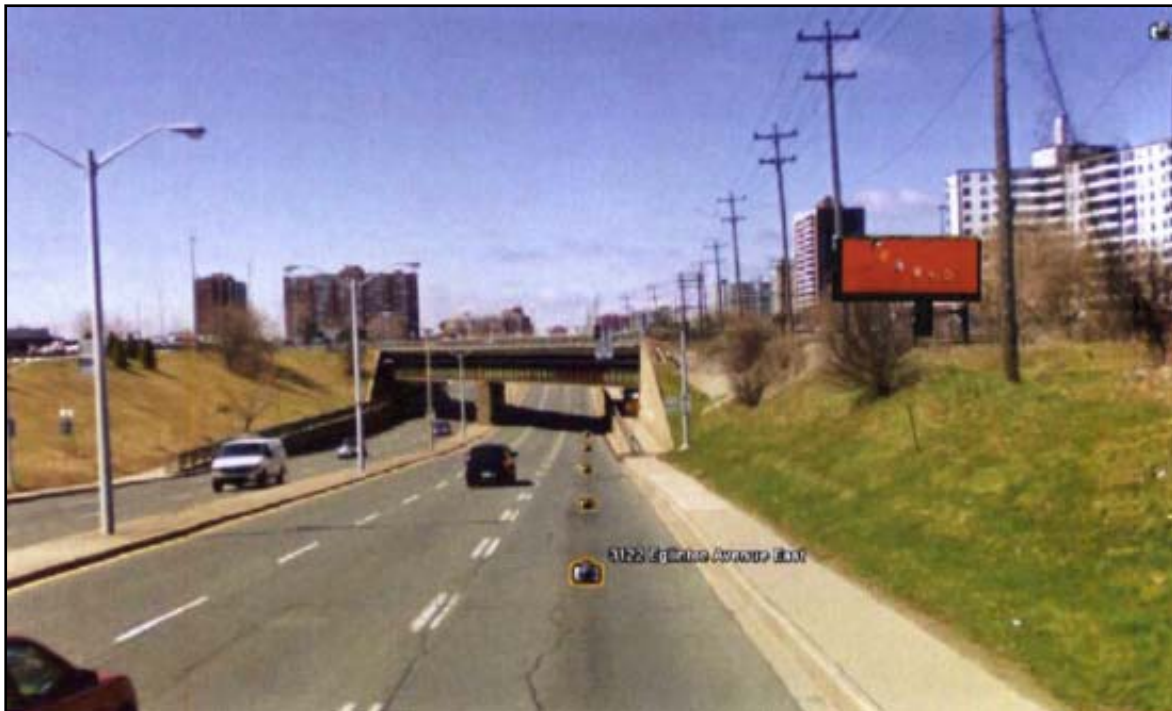


ATTACHMENT 8: Photo Renderings – Proposed Third Party Ground Signs

1. Looking south - Kipling Avenue; 150 meters north of Belfield Road; east side; facing north



2. Looking west - Eglinton Avenue East; 150 metres east of Bellamy Road; north side; facing east



2. Looking east - Eglinton Avenue East; 150 metres east of Bellamy Road; north side; facing west



3. Looking west - Steeles Avenue West; 200 metres west of Alness Street; south side; facing east



3. Looking east - Steeles Avenue West; 200 metres west of Alness Street; south side; facing west



4. Looking east - York Mills Road; 350 metres east of Leslie Street; south side; facing west



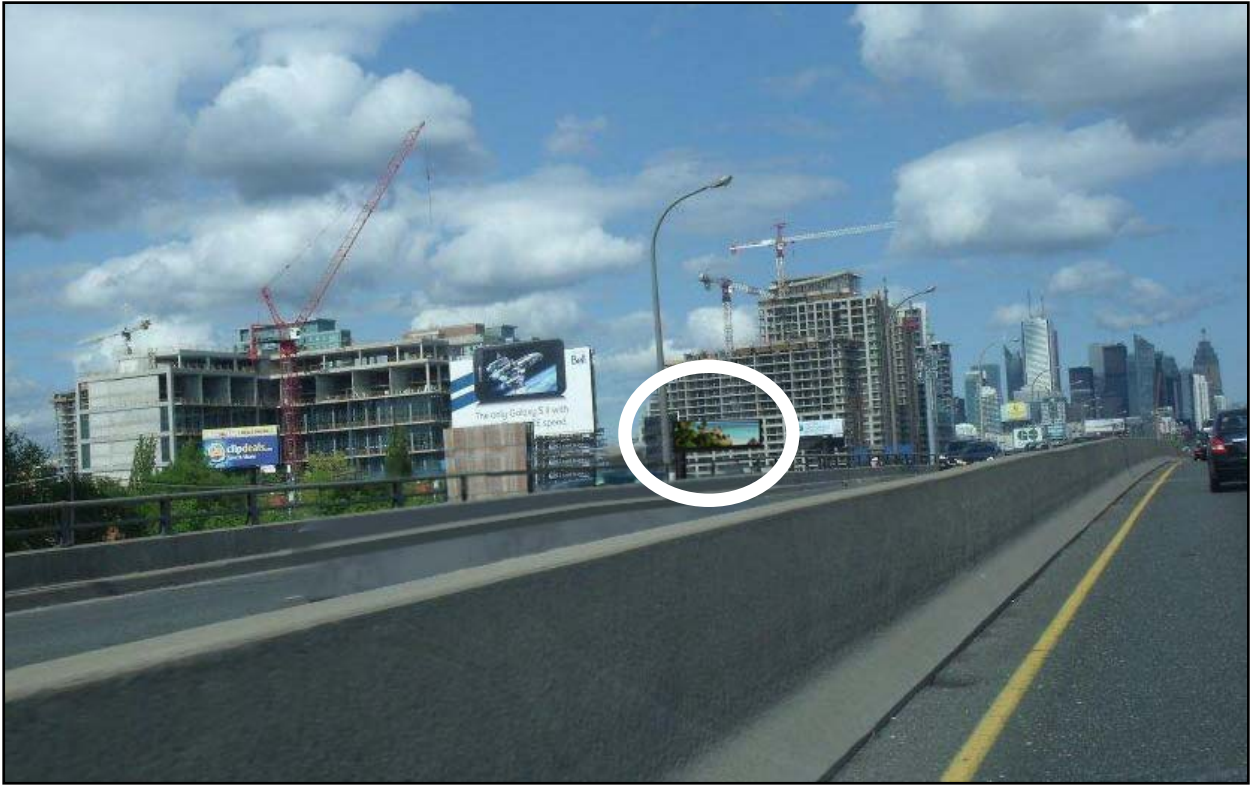
4. Looking west - York Mills Road; 350 metres east of Leslie Street; south side; facing east



5. Looking west - F.G. Gardiner Expressway; 100 metres east of Atlantic Avenue; north side; facing east



5. Looking east – F.G. Gardiner Expressway; 100 metres east of Atlantic Avenue; north side; facing west



6. Looking west – F.G. Gardiner Expressway; 525 metres east of Atlantic Avenue; north side; facing east



6. Looking east – F.G. Gardiner Expressway; 525 metres east of Atlantic Avenue; north side; facing west



7. Looking east - Lawrence Avenue West; east of Weston Road; south side; facing west



8. Looking south - Leslie Street; 75 metres south of Hwy. 401 exit ramp to Leslie Street; east side; facing north



8. Looking north - Leslie Street; 75 metres south of Hwy. 401 exit ramp to Leslie Street; east side; facing south

