

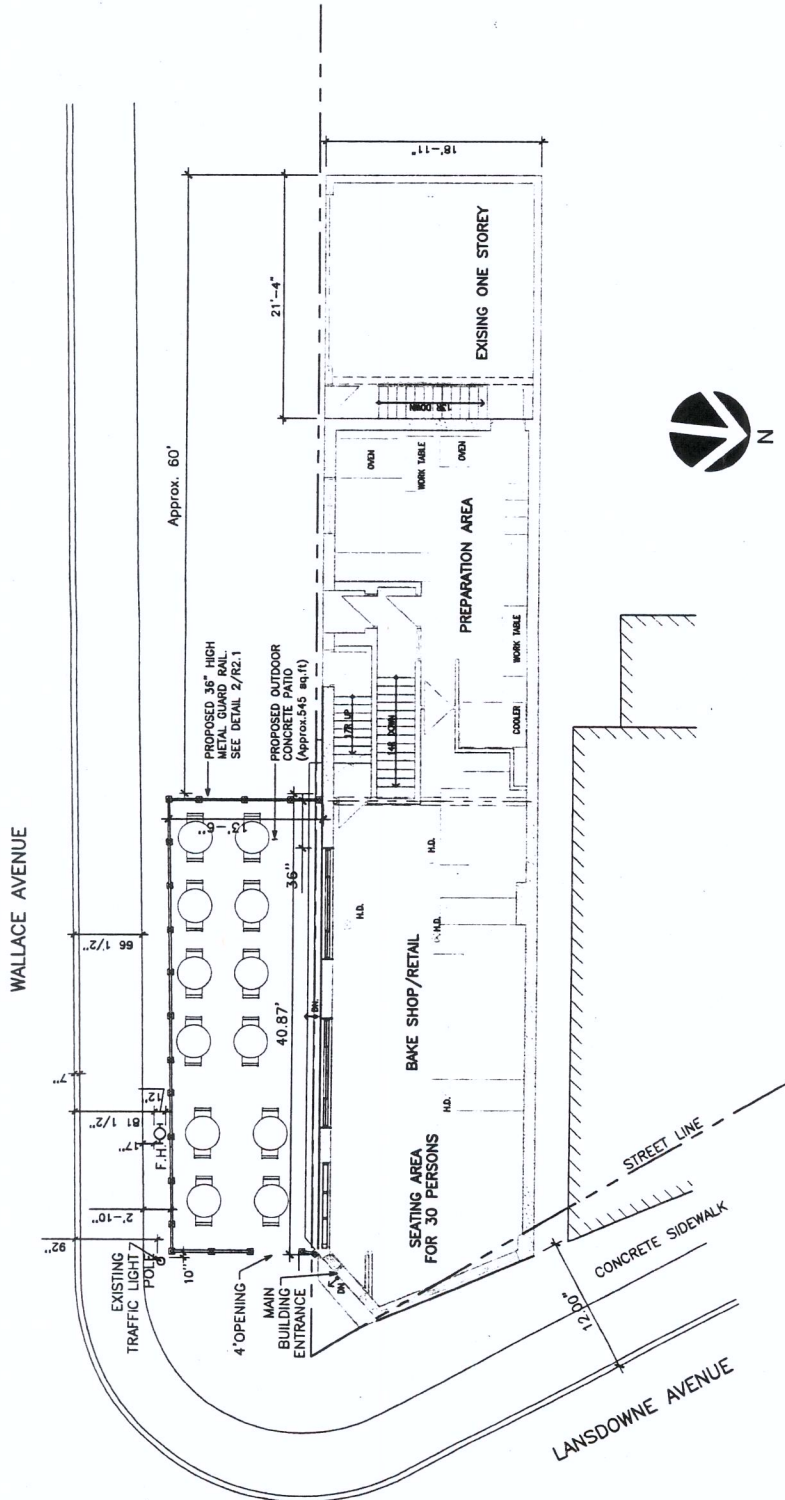
No.	Revision	Date	By
2	REVISED	02/26/2011	P.L.
1	ISSUED TO CITY	04/03/2011	P.L.
	ISSUED FOR REVIEW	2/7/2010	P.L.

Project Name  
654 LANSDOWNE AVE.  
Toronto, Ontario

REVISED BAKE SHOP / RETAIL LAYOUT

Sheet Title  
FIRST FLOOR PLAN

Drawn By M.C. Scale 1/8"=1'-0"  
Designed By P.L. Date July 27, 2010  
Project Number B10-03.02  
Sheet Number  
Revision 2  
R1.2

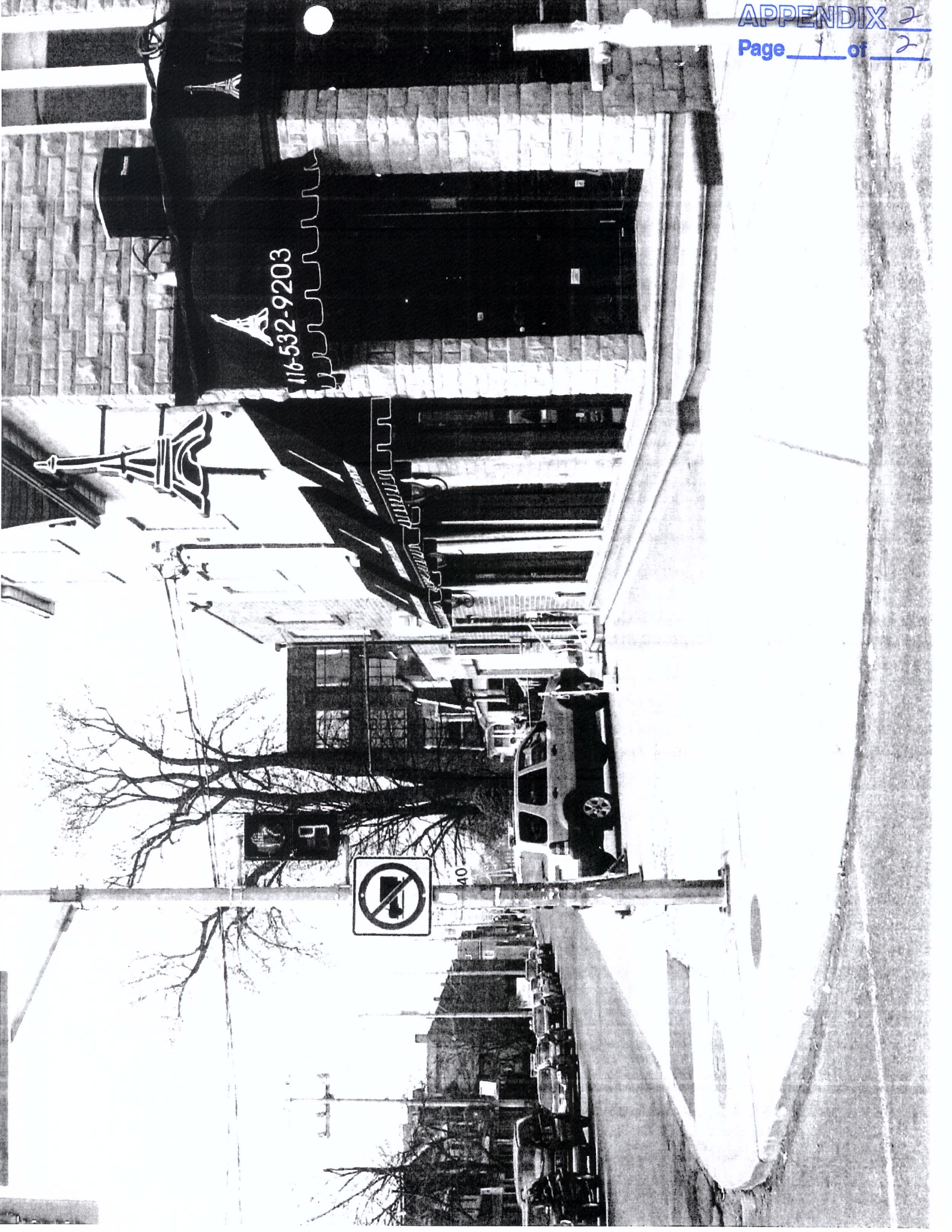


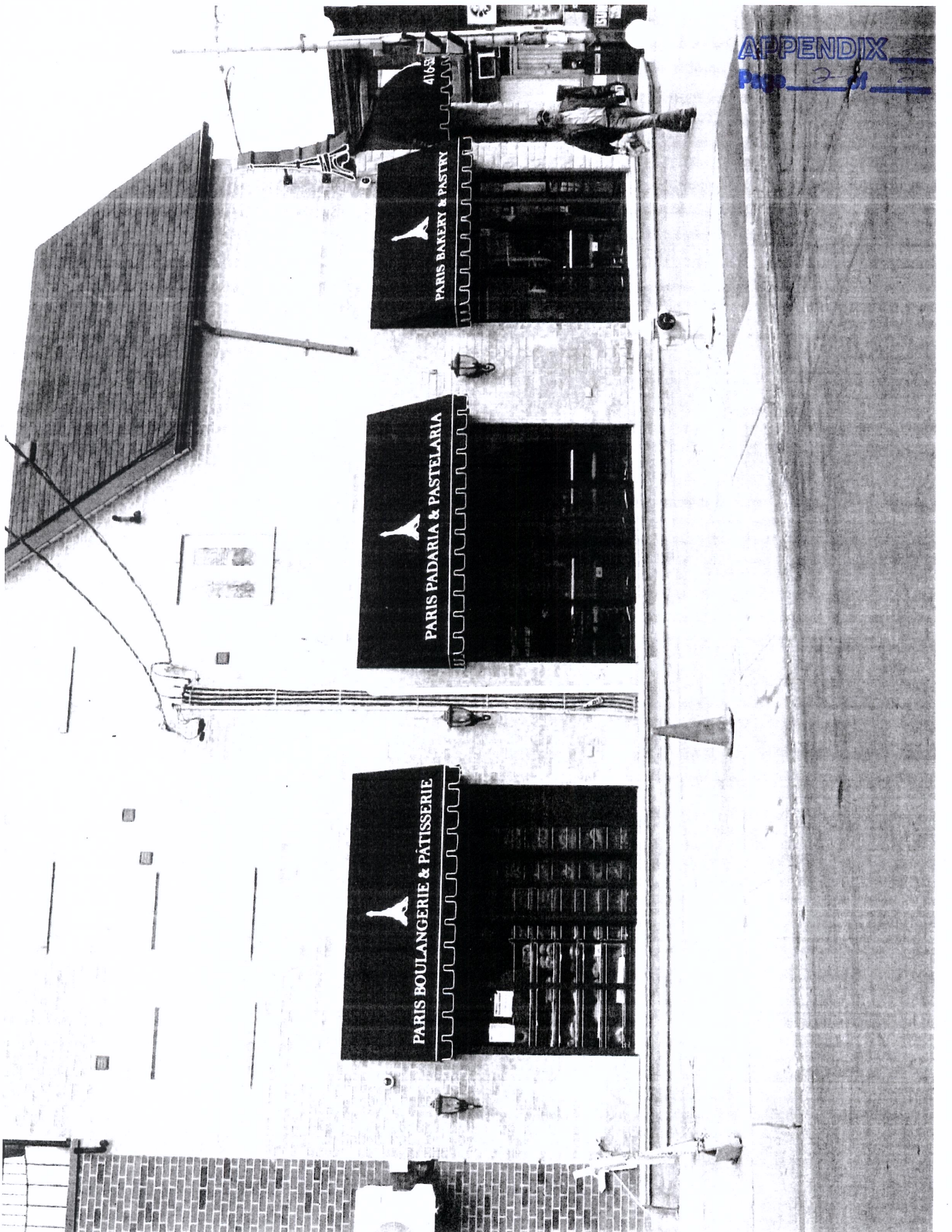
WALLACE AVENUE

LANSDOWNE AVENUE

STREET LINE

CONCRETE SIDEWALK





PARIS BOULANGERIE & PÂTISSERIE

PARIS PADARIA & PASTELARIA

PARIS BAKERY & PASTRY

41658