

Economic Dashboard – Annual Summary

Economic Development Committee

February 11, 2014



Indicator Highlights - Annual

	Geography	2011	2012	2013	% Change	Status
Unemployment Rate	Toronto	9.2%	9.6%	8.8%	-8.8%	
	Canada	7.5%	7.3%	7.1%	-2.5%	
Participation Rate	Toronto	64.9%	65.9%	67.3%	2.2%	
	Canada	66.8%	66.7%	66.5%	-0.2%	
Total Employed Residents	Toronto	1,266,830	1,286,050	1,320,860	2.7%	
	Canada	17,306,220	17,507,710	17,731,150	1.3%	
Total Value of Building Permits (Billions)	Toronto	\$6.9	\$6.2	\$7.9	27.4%	
	Canada	\$74.0	\$80.9	\$80.7	-0.2%	
Office Vacancy Rate Q4	Toronto	5.4%	5.6%	6.1%	8.9%	
Average House Price	Toronto	\$501,971	\$538,053	\$565,860	5.2%	
	Canada	\$363,300	\$363,700	\$382,500	5.2%	
Business Bankruptcies Year-to-Date (Q1 to Q3)	Toronto CMA	608	505	458	-9.3%	
	Canada	3,605	3,309	3,194	-3.5%	
Employment Insurance Recipients Year-to-Date (January to November)	Toronto	372,160	329,770	319,940	-3.0%	
	Canada	6,711,760	6,119,710	5,727,990	-6.4%	
Consumer Price Index (2002=100)	Toronto	120.0	121.8	123.3	1.2%	
	Canada	119.9	121.7	122.8	0.9%	
Retail Sales (Billions) Year-to-Date (January to November)	Toronto CMA	\$60.2	\$61.0	\$62.3	2.1%	
	Canada	\$419.4	\$431.0	\$441.6	2.5%	



Negative

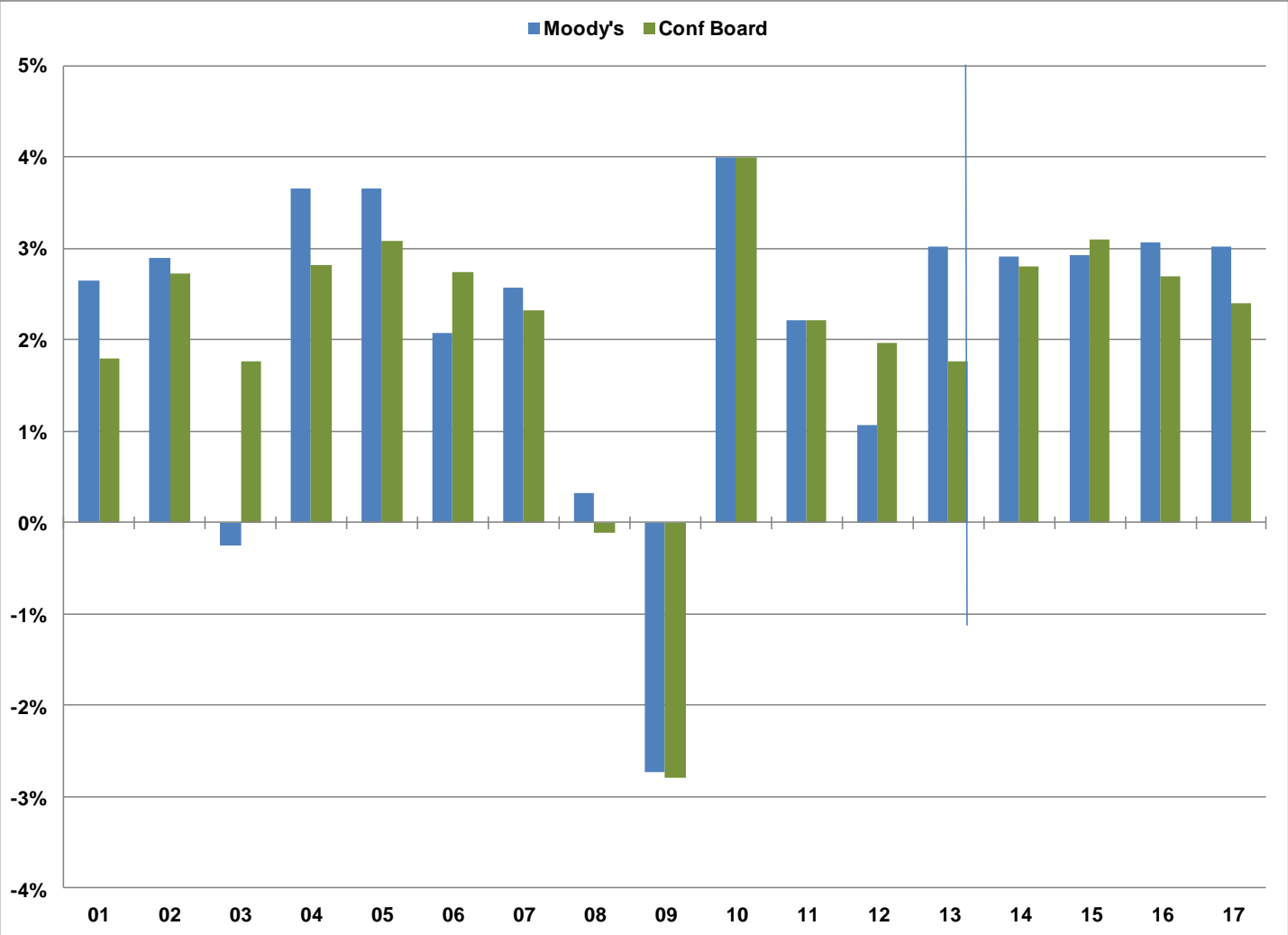


Caution



Positive

Change in Real GDP Toronto CMA



Source: Conference Board of Canada (December 6, 2013), Moody's (January 10, 2014)

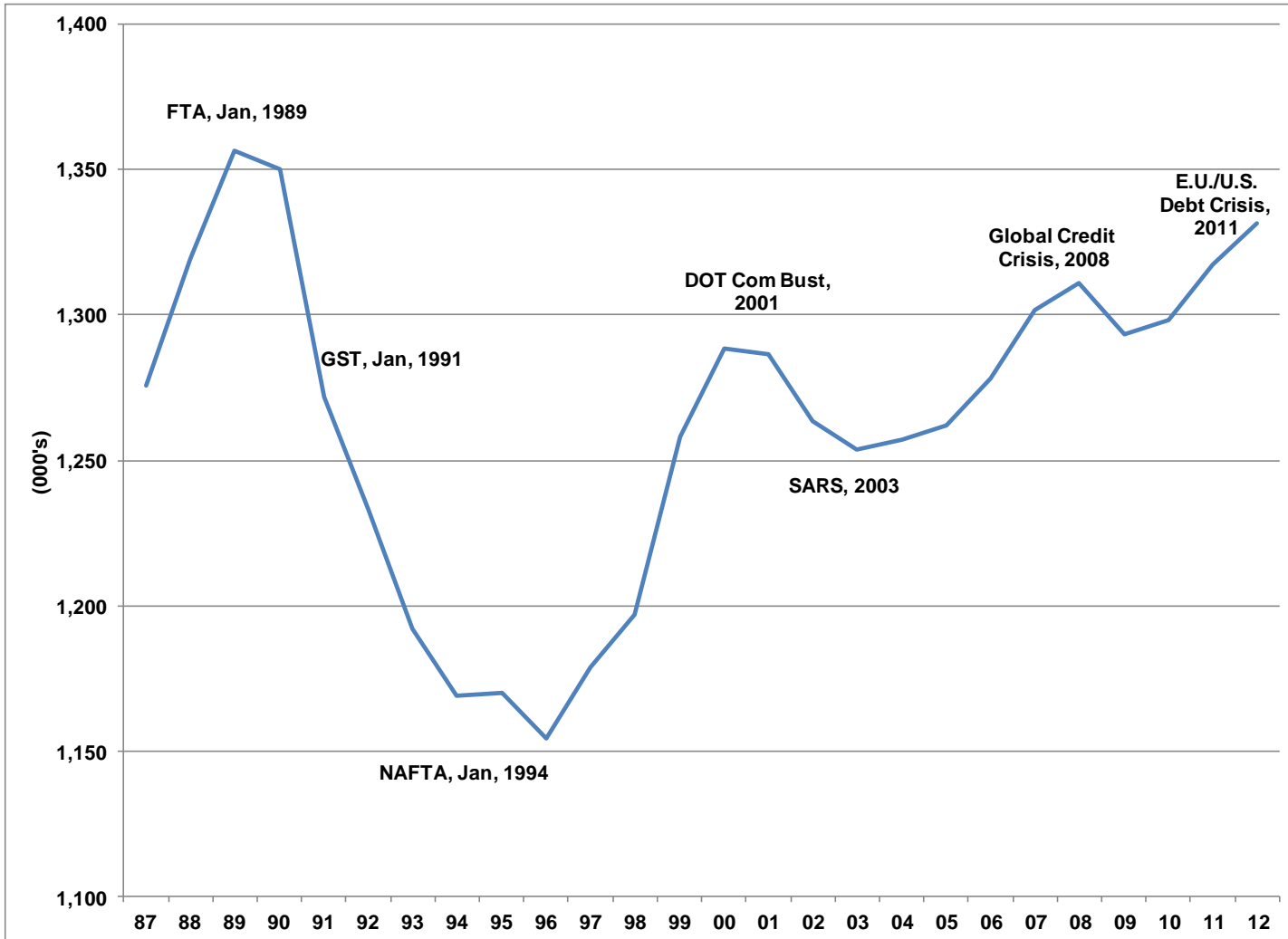
Change in Real GDP

Toronto CMA

	Moody's	Conference Board	Average
2001	2.65%	1.79%	2.22%
2002	2.90%	2.73%	2.81%
2003	-0.26%	1.76%	0.75%
2004	3.65%	2.82%	3.23%
2005	3.66%	3.08%	3.37%
2006	2.08%	2.74%	2.41%
2007	2.57%	2.32%	2.45%
2008	0.33%	-0.11%	0.11%
2009	-2.74%	-2.79%	-2.76%
2010	3.99%	3.99%	3.99%
2011	2.21%	2.21%	2.21%
2012	1.07%	1.96%	1.52%
2013	3.02%	1.76%	2.39%
2014	2.92%	2.79%	2.86%
2015	2.93%	3.10%	3.02%
2016	3.06%	2.69%	2.88%

Jobs in the City of Toronto

Establishment Survey



Jobs in the City of Toronto

Establishment Survey

Total Employment (000's) Y-Y Change

Year	Total Employment (000's)	Y-Y Change
1987	1,275.8	
1988	1,319.3	43.5
1989	1,356.5	37.2
1990	1,350.1	-6.4
1991	1,272.0	-78.1
1992	1,232.9	-39.1
1993	1,191.8	-41.1
1994	1,168.9	-22.9
1995	1,169.9	1.0
1996	1,154.2	-15.7
1997	1,178.5	24.3
1998	1,197.0	18.5
1999	1,258.2	61.2
2000	1,288.4	30.2
2001	1,286.3	-2.1
2002	1,263.3	-23.0
2003	1,253.7	-9.6
2004	1,257.0	3.3
2005	1,262.2	5.2
2006	1,278.0	15.8
2007	1,301.6	23.6
2008	1,310.8	9.2
2009	1,293.2	-17.6
2010	1,298.3	5.1
2011	1,317.3	19.0
2012	1,331.6	14.3

Business Climate 2012/13

Toronto Ranks Well Internationally

Reputation Institute – Reputable Cities – 2013

Toronto ranks **2nd of 100** global cities for reputation

Aon Hewitt – People Risk Index - 2013

Toronto ranks **3rd of 138** global metropolitan areas for lowest risk

PricewaterhouseCoopers - Cities of Opportunity - 2012

Toronto ranks **3rd of 27** cities globally in current social and economic performance

Economist Intelligence Unit – Liveability Ranking - 2013

Toronto ranks **4th of 140** cities for liveability

KPMG's Comparative Alternatives Study – Business Location Costs - 2012

Toronto ranks **5th of 44** global cities for attractiveness for inward investment

Colliers International – Office Markets Lowest Vacancy Rate - 2012

Toronto ranks **7th of 75** in office markets in North America

Business Climate 2012/13

Toronto Ranks Well Internationally

FDI Magazine – American Cities of the Future - 2013

Toronto ranks **2nd of 10** North American cities for attractiveness for inward investment

Economist Intelligence Unit and CitiGroup – City Competitiveness Index- 2013

Toronto ranks **10th of 120** cities for global competitiveness

QS World University Ranking – University Ranking - 2013

University of Toronto ranks **17th of 833** global universities

CIBC - Canadian Cities: An Economic Snapshot - 2012

Toronto ranks **1st of 25** Canadian CMAs for economic performance

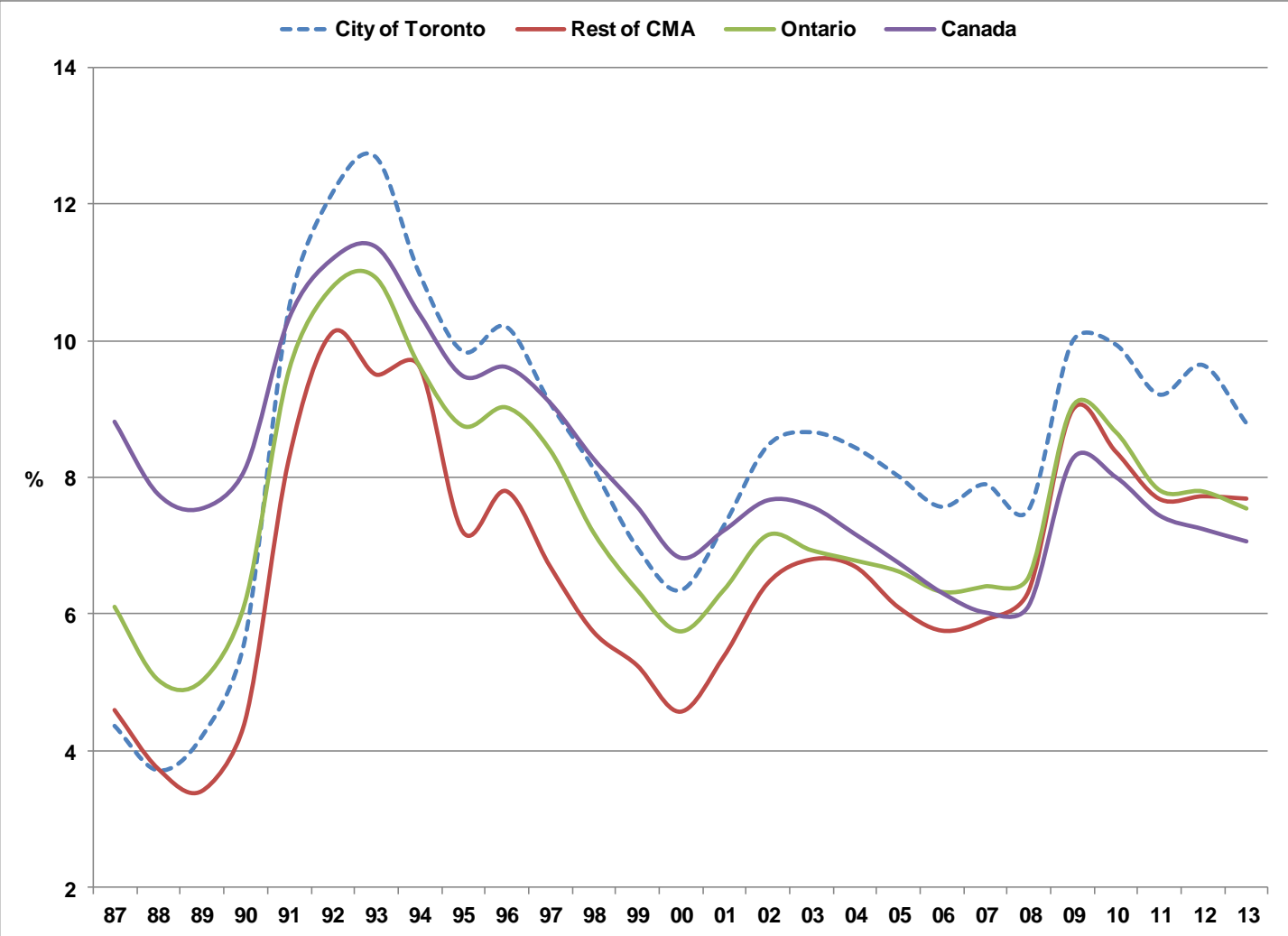
Intelligent Community Forum - Top 7 Intelligent Communities - 2013

Toronto ranks **7th of 7** global cities for best practices in creating competitive local economies

Toronto Board of Trade – Scorecard on Prosperity - 2013

Toronto ranks **6th of 24** global metropolitan regions

Unemployment Rate

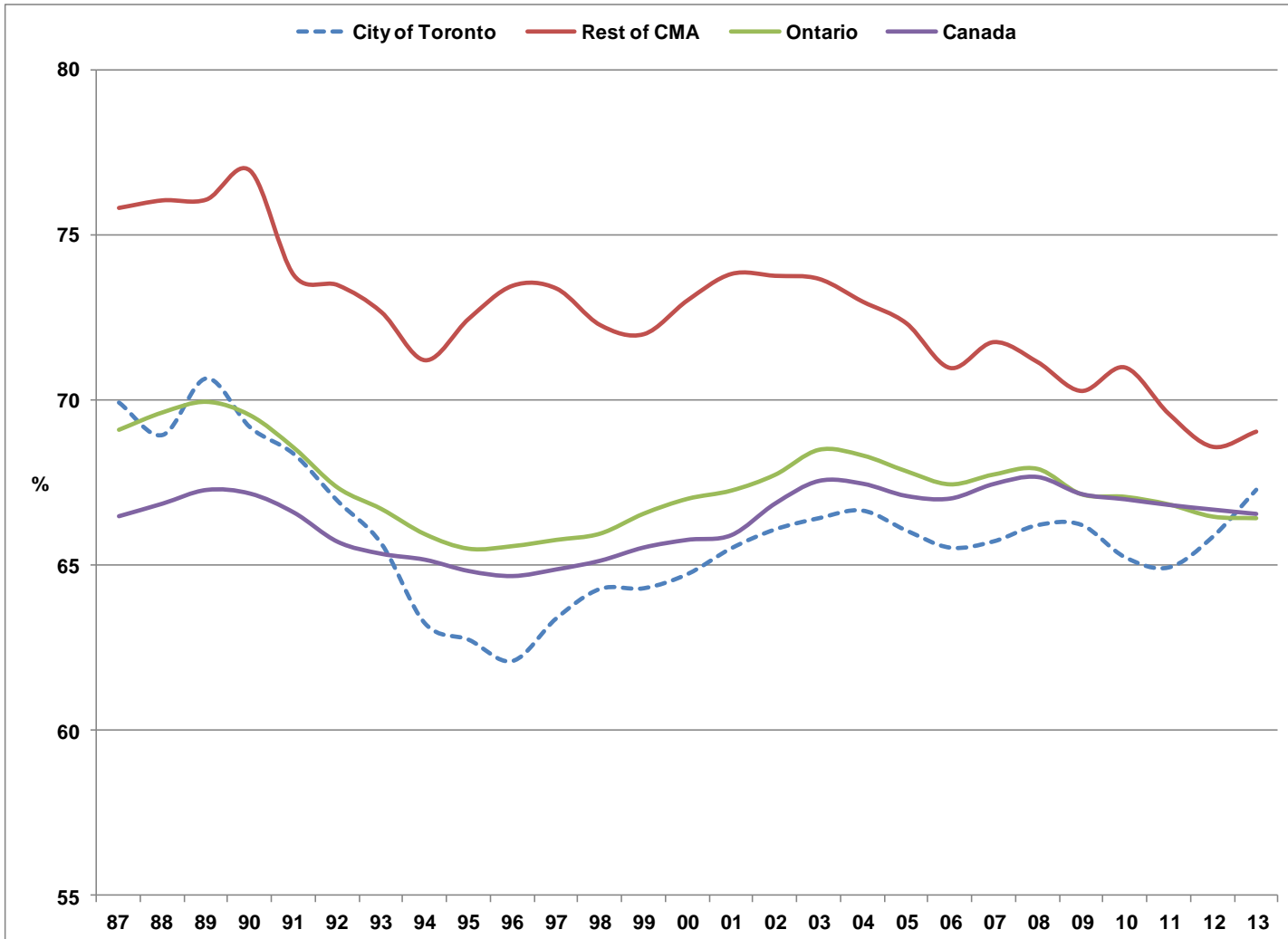


Source : Statistics Canada – Labour Force Survey

Unemployment Rate

	City of Toronto	Rest of CMA	Ontario	Canada
1987	4.37	4.60	6.1	8.82
1988	3.72	3.74	5.03	7.76
1989	4.21	3.41	5.01	7.55
1990	5.65	4.44	6.17	8.13
1991	10.45	8.26	9.55	10.32
1992	12.15	10.12	10.78	11.20
1993	12.68	9.50	10.92	11.38
1994	10.98	9.63	9.63	10.40
1995	9.84	7.20	8.75	9.49
1996	10.20	7.80	9.02	9.62
1997	9.09	6.70	8.40	9.10
1998	8.13	5.74	7.19	8.28
1999	6.98	5.25	6.35	7.58
2000	6.35	4.57	5.74	6.83
2001	7.30	5.39	6.35	7.23
2002	8.46	6.45	7.15	7.67
2003	8.66	6.80	6.93	7.58
2004	8.44	6.70	6.78	7.18
2005	8.02	6.10	6.62	6.76
2006	7.57	5.76	6.32	6.32
2007	7.90	5.92	6.40	6.03
2008	7.53	6.34	6.54	6.13
2009	9.98	8.98	9.03	8.27
2010	9.94	8.38	8.66	8.01
2011	9.21	7.69	7.81	7.45
2012	9.64	7.72	7.79	7.25
2013	8.79	7.69	7.54	7.07

Participation Rate

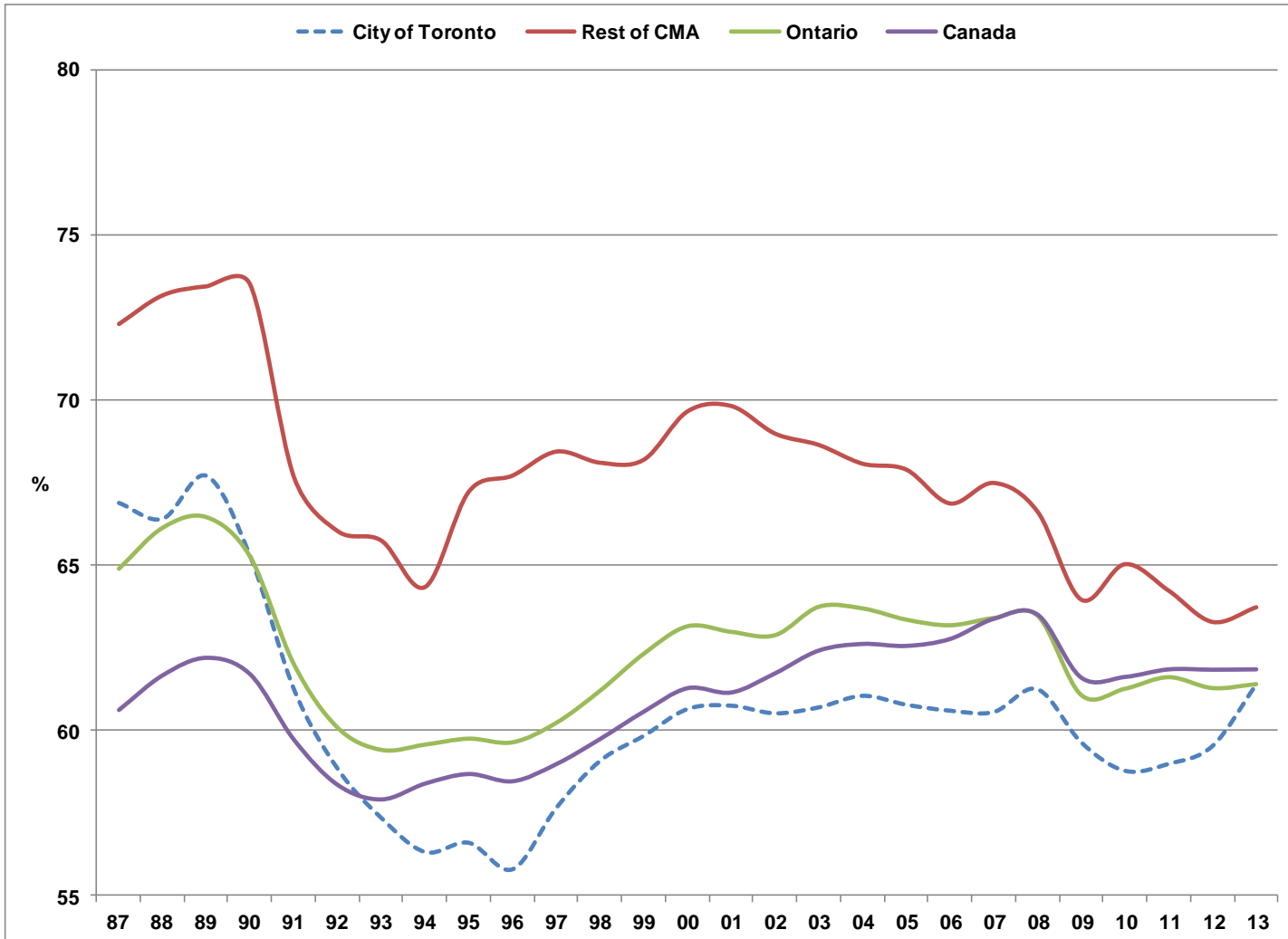


Participation Rate

	City of Toronto	Rest of CMA	Ontario	Canada
1987	69.93	75.80	69.1	66.47
1988	68.95	76.02	69.63	66.85
1989	70.66	76.05	69.95	67.26
1990	69.18	76.92	69.54	67.15
1991	68.37	73.76	68.55	66.58
1992	66.95	73.46	67.34	65.70
1993	65.66	72.64	66.69	65.34
1994	63.24	71.19	65.92	65.16
1995	62.75	72.44	65.48	64.82
1996	62.11	73.44	65.56	64.67
1997	63.40	73.36	65.75	64.87
1998	64.29	72.25	65.94	65.13
1999	64.31	71.98	66.55	65.53
2000	64.74	73.00	67.00	65.76
2001	65.52	73.80	67.25	65.90
2002	66.09	73.74	67.73	66.85
2003	66.43	73.65	68.49	67.53
2004	66.66	72.96	68.32	67.45
2005	66.06	72.31	67.84	67.08
2006	65.54	70.95	67.44	67.00
2007	65.73	71.73	67.74	67.44
2008	66.22	71.13	67.91	67.65
2009	66.23	70.26	67.14	67.14
2010	65.25	70.97	67.06	66.98
2011	64.94	69.57	66.83	66.81
2012	65.86	68.57	66.46	66.67
2013	67.29	69.03	66.41	66.54

Employment Rate

Employment / Population age 15+



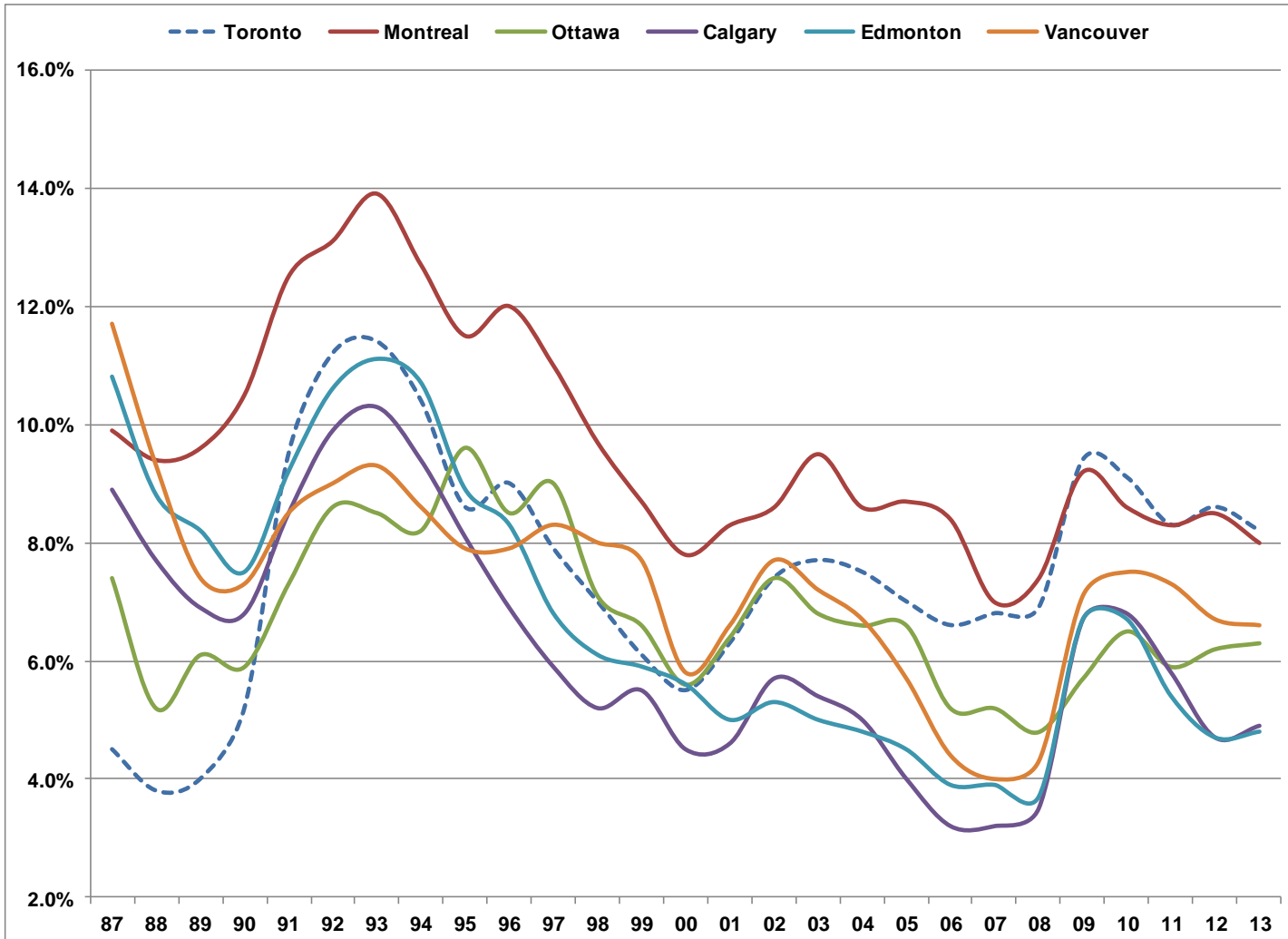
Employment Rate

Employment / Population age 15+

	City of Toronto	Rest of CMA	Ontario	Canada
1987	66.87	72.31	64.89	60.61
1988	66.39	73.18	66.13	61.66
1989	67.69	73.45	66.45	62.19
1990	65.26	73.50	65.25	61.69
1991	61.23	67.67	62.00	59.71
1992	58.82	66.03	60.08	58.34
1993	57.33	65.74	59.41	57.90
1994	56.30	64.33	59.57	58.38
1995	56.58	67.23	59.75	58.67
1996	55.78	67.71	59.64	58.45
1997	57.64	68.44	60.23	58.97
1998	59.06	68.10	61.20	59.73
1999	59.82	68.19	62.32	60.56
2000	60.63	69.66	63.15	61.27
2001	60.73	69.82	62.98	61.14
2002	60.50	68.98	62.88	61.72
2003	60.68	68.64	63.74	62.41
2004	61.03	68.07	63.69	62.61
2005	60.76	67.89	63.35	62.55
2006	60.58	66.87	63.18	62.76
2007	60.54	67.49	63.40	63.37
2008	61.23	66.62	63.47	63.50
2009	59.62	63.95	61.07	61.59
2010	58.76	65.02	61.26	61.61
2011	58.97	64.22	61.61	61.84
2012	59.51	63.27	61.28	61.83
2013	61.37	63.72	61.4	61.84

Unemployment Rate

Major Canadian Urban Regions



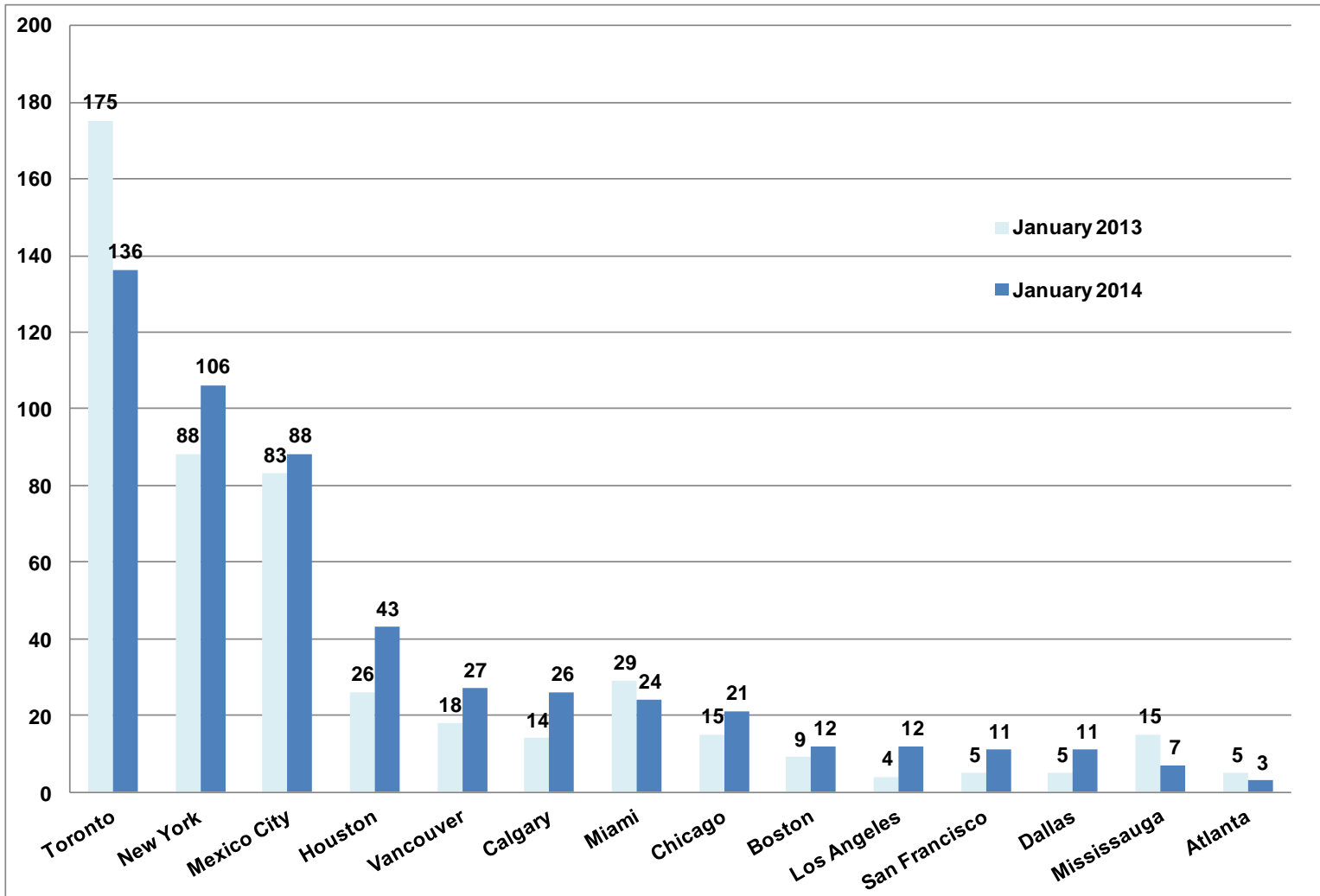
Unemployment Rate

Major Canadian Urban Regions

	Toronto	Montreal	Ottawa	Calgary	Edmonton	Vancouver
1987	4.5	9.9	7.4	8.9	10.8	11.7
1988	3.8	9.4	5.2	7.7	8.8	9.3
1989	4.0	9.6	6.1	6.9	8.2	7.4
1990	5.2	10.5	5.9	6.8	7.5	7.3
1991	9.5	12.5	7.3	8.5	9.2	8.5
1992	11.2	13.1	8.6	9.9	10.6	9.0
1993	11.4	13.9	8.5	10.3	11.1	9.3
1994	10.4	12.7	8.2	9.4	10.7	8.6
1995	8.6	11.5	9.6	8.1	8.9	7.9
1996	9.0	12.0	8.5	6.9	8.3	7.9
1997	7.9	11.0	9.0	5.9	6.8	8.3
1998	7.0	9.7	7.1	5.2	6.1	8.0
1999	6.1	8.7	6.6	5.5	5.9	7.7
2000	5.5	7.8	5.6	4.5	5.6	5.8
2001	6.3	8.3	6.4	4.6	5.0	6.6
2002	7.4	8.6	7.4	5.7	5.3	7.7
2003	7.7	9.5	6.8	5.4	5.0	7.2
2004	7.5	8.6	6.6	5.0	4.8	6.7
2005	7.0	8.7	6.6	4.0	4.5	5.7
2006	6.6	8.4	5.2	3.2	3.9	4.4
2007	6.8	7.0	5.2	3.2	3.9	4.0
2008	6.9	7.4	4.8	3.5	3.7	4.3
2009	9.4	9.2	5.7	6.7	6.7	7.1
2010	9.1	8.6	6.5	6.8	6.7	7.5
2011	8.3	8.3	5.9	5.8	5.4	7.3
2012	8.6	8.5	6.2	4.7	4.7	6.7
2013	8.2	8.0	6.3	4.9	4.8	6.6

High Rise Buildings Under Construction

North American Cities

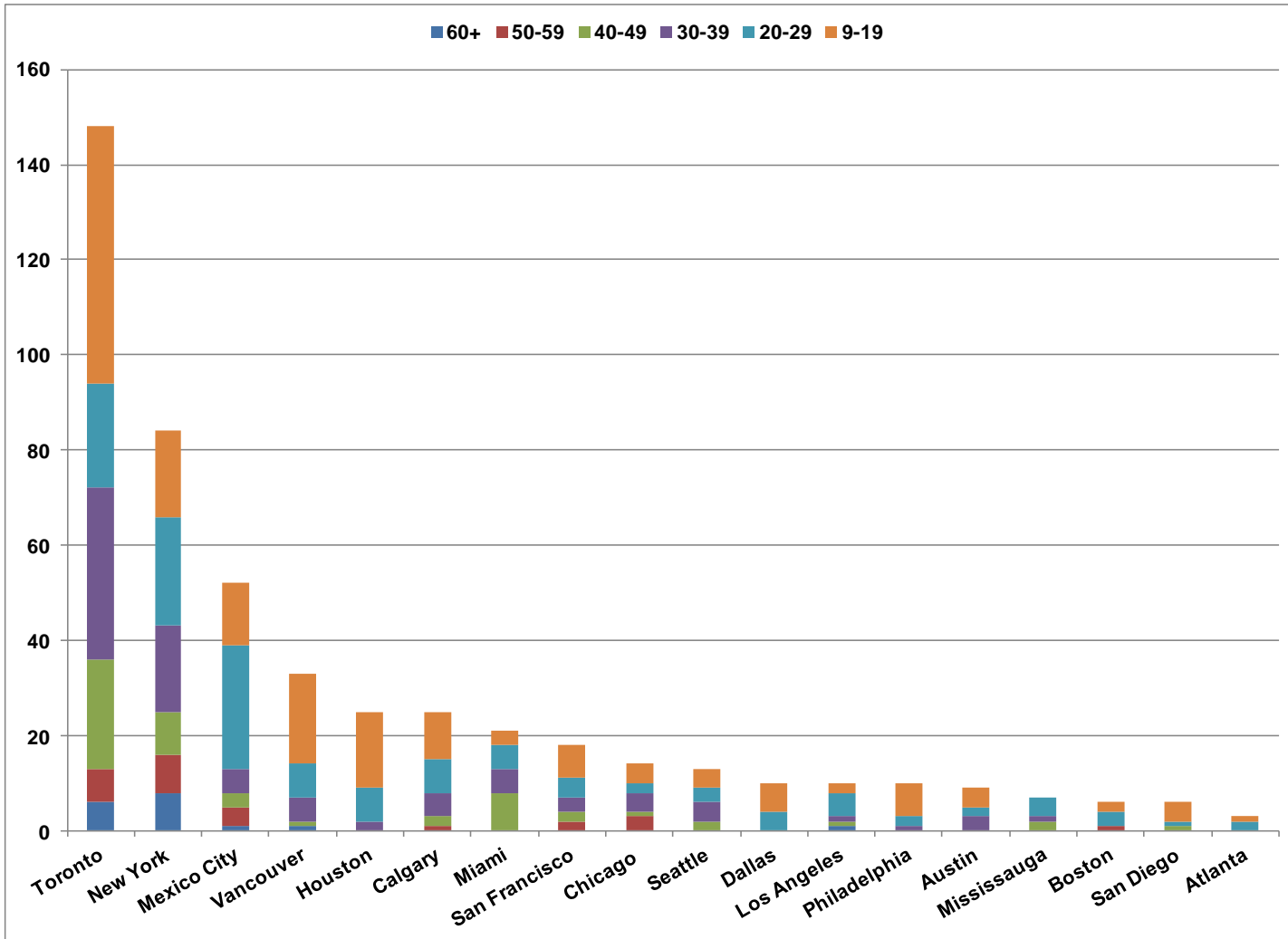


Toronto's Tallest Buildings

	Building	Address	Metres	Feet	Floors	Year
1	Aura at College Park	388 Yonge St	272	892	78	2014
2	Number One Bloor	1 Bloor St E	257	844	75	2016
3	Ice Condominiums East	16 York St	234	768	67	2014
4	Harbour Plaza Residences East	90 Harbour St	233	764	66	2017
5	Harbour Plaza Residences West	1 York St	224	735	62	2017
6	Bay-Adelaide East	333 Bay St	196	643	44	2016
7	Casa 2	42 Charles St. E	185	605	57	2016
8	U Condominiums II	St Mary St	184	604	55	2014
9	INDX Condominiums	66 Temperance St	179	587	54	2015
10	One York Street	1 York St	174	569	35	2016
11	Hullmark Centre I	4759 Yonge St	171	561	45	2014
12	Karma	9 Grenville Street	166	544	50	2015
13	FIVE	5 St. Joseph St	161	528	48	2014
14	X2	580 Jarvis St	160	525	44	2014
15	Southcore Financial Centre Delta Hotel	Lower Simcoe Street	160	524	47	2014
16	Theatre Park	224 King West	157	515	47	2014
17	U Condominiums I	St Mary St	154	505	45	2014
18	Westlake Village 1	2200 Lake Shore Blvd W	153	503	48	2014
19	Chaz on Charles	45 Charles St E	151	497	47	2015
20	Westlake Village 2	2200 Lake Shore Blvd W	147	484	44	2014
21	Pace Condominiums	200 Jarvis	146	480	42	2015
22	Emerald Park East Toronto	580 Jarvis St	142	464	39	2015
23	Southcore Bremmer Tower	18 York St	136	445	30	2014
24	Emerald Park West Toronto	580 Jarvis St	112	369	30	2015
25	Westlake Village 3	2200 Lake Shore Blvd W	N/A	N/A	37	2014

High Rise Buildings Under Construction

North American Cities (Skyscraperpage)



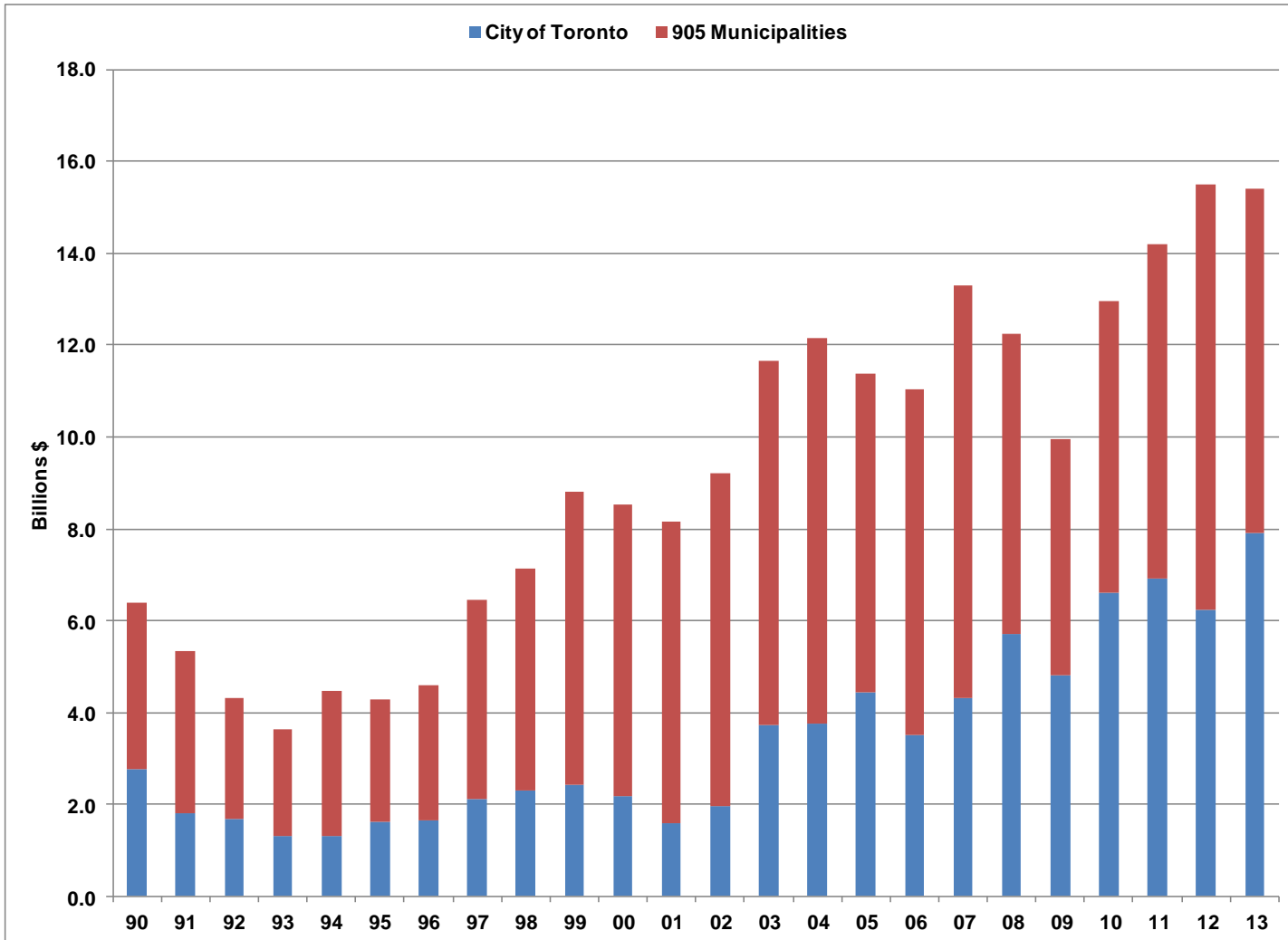
High Rise Buildings Under Construction

City of Toronto by number of floors

Floors	Number of Buildings	Total Floors	Percent of Total
70+	2	153	3.5%
60-69	4	201	4.7%
50-59	7	394	9.1%
40-49	23	1,062	24.6%
30-39	36	1,248	28.9%
20-29	22	622	14.4%
9-19	54	636	14.7%
Total	148	4,316	100%

Total Value of Building Permits

City and "905" Area



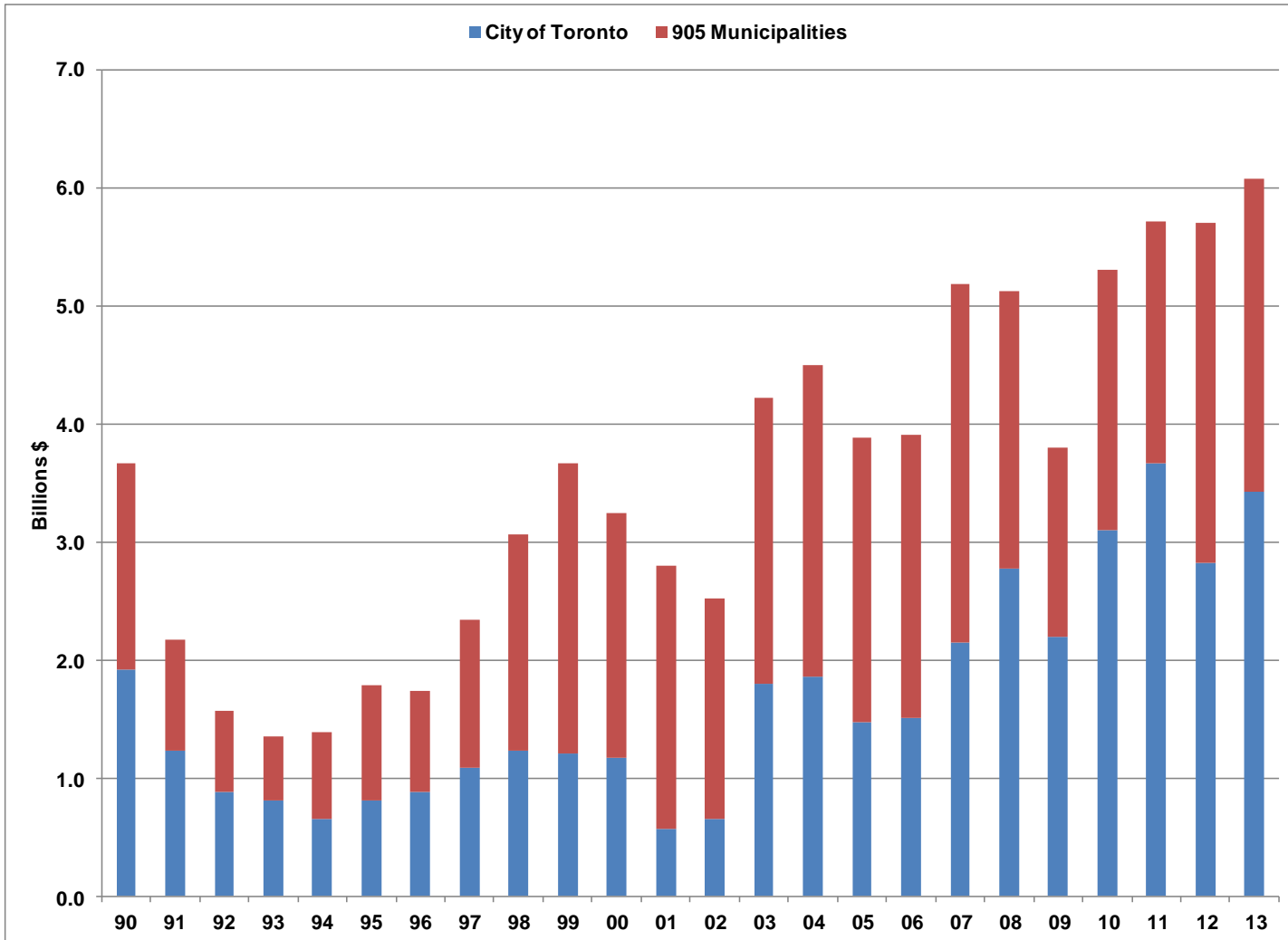
Total Value of Building Permits

City and “905” Area (\$ Billions)

	City of Toronto	905 Municipalities
1990	2.8	3.6
1991	1.8	3.5
1992	1.7	2.6
1993	1.3	2.3
1994	1.3	3.2
1995	1.6	2.7
1996	1.7	2.9
1997	2.1	4.3
1998	2.3	4.8
1999	2.4	6.4
2000	2.2	6.4
2001	1.6	6.6
2002	2.0	7.3
2003	3.7	7.9
2004	3.7	8.4
2005	4.4	7.0
2006	3.5	7.5
2007	4.3	9.0
2008	5.7	6.5
2009	4.8	5.1
2010	6.6	6.4
2011	6.9	7.3
2012	6.2	9.3
2013	7.9	7.5

Value of ICI Building Permits

City and "905" Area

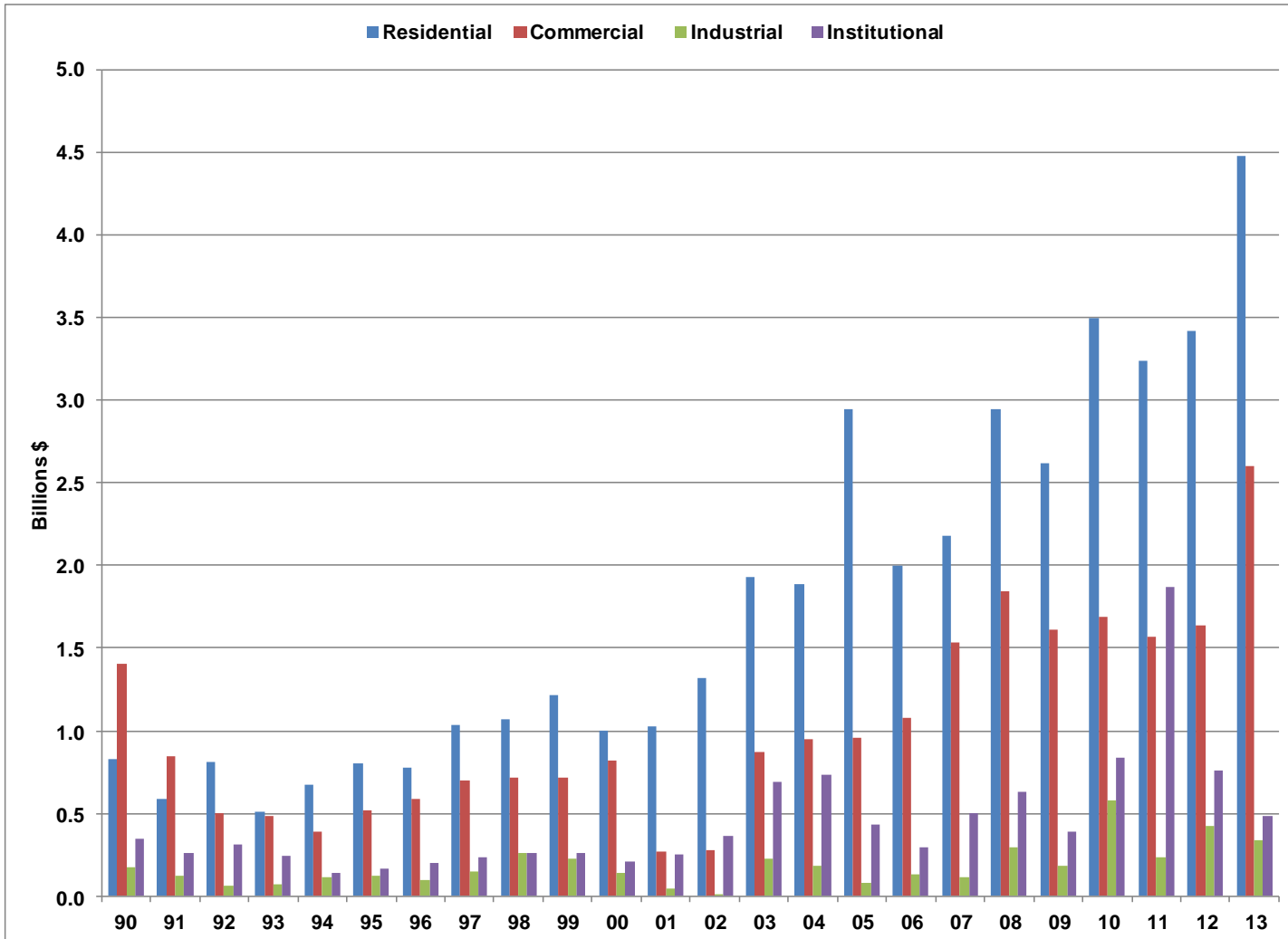


Value of ICI Building Permits

City and “905” Area (\$ Billions)

	City of Toronto	905 Municipalities
1990	1.9	1.7
1991	1.2	0.9
1992	0.9	0.7
1993	0.8	0.5
1994	0.6	0.7
1995	0.8	1.0
1996	0.9	0.9
1997	1.1	1.3
1998	1.2	1.8
1999	1.2	2.5
2000	1.2	2.1
2001	0.6	2.2
2002	0.7	1.9
2003	1.8	2.4
2004	1.9	2.6
2005	1.5	2.4
2006	1.5	2.4
2007	2.1	3.0
2008	2.8	2.3
2009	2.2	1.6
2010	3.1	2.2
2011	3.7	2.0
2012	2.8	2.9
2013	3.4	2.6

Value of Building Permits City of Toronto

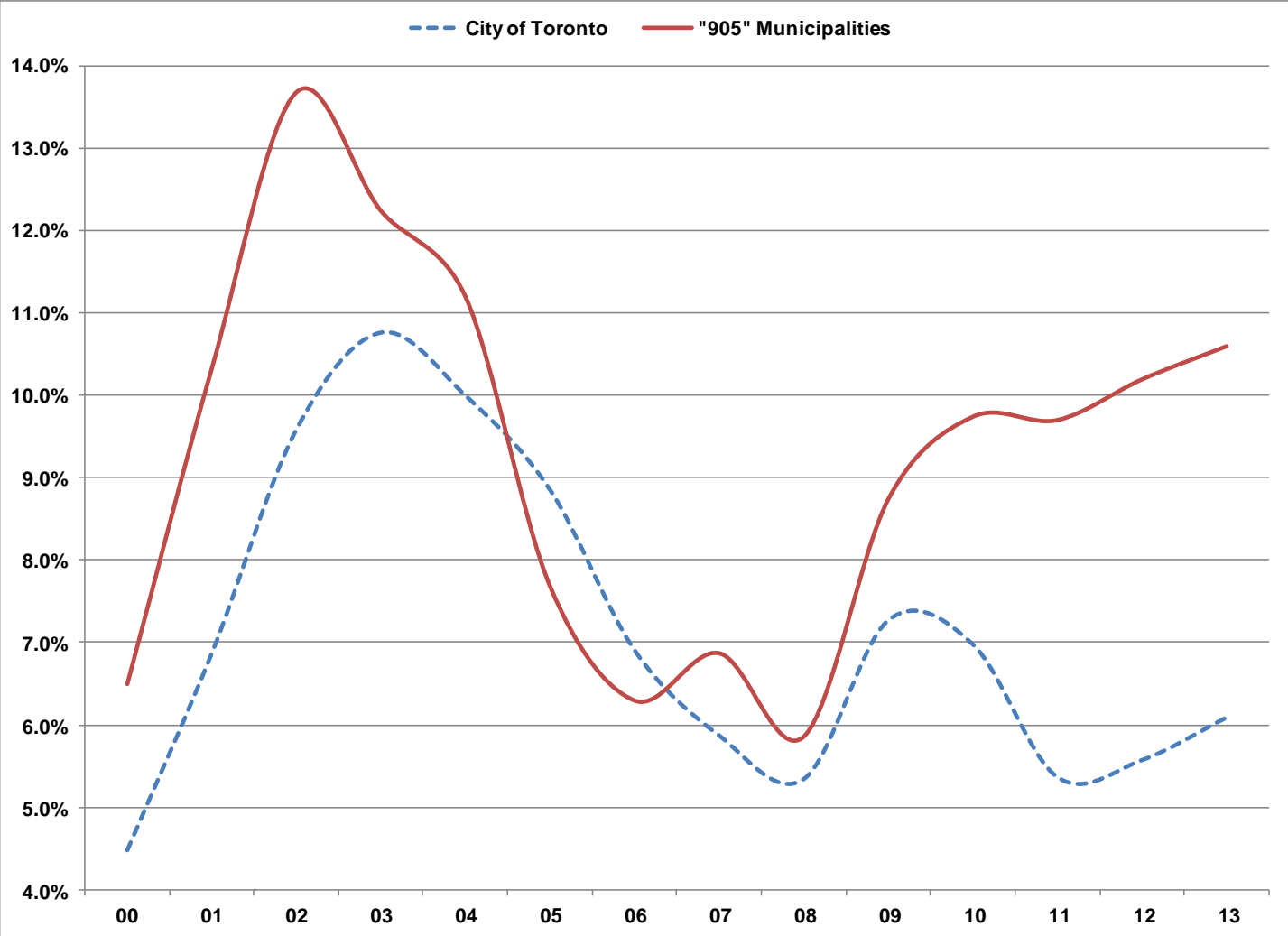


Value of Building Permits

City of Toronto (\$ Billions)

	Residential	Commercial	Industrial	Institutional
1990	0.8	1.4	0.2	0.3
1991	0.6	0.8	0.1	0.3
1992	0.8	0.5	0.1	0.3
1993	0.5	0.5	0.1	0.2
1994	0.7	0.4	0.1	0.1
1995	0.8	0.5	0.1	0.2
1996	0.8	0.6	0.1	0.2
1997	1.0	0.7	0.1	0.2
1998	1.1	0.7	0.3	0.3
1999	1.2	0.7	0.2	0.3
2000	1.0	0.8	0.1	0.2
2001	1.0	0.3	0.0	0.3
2002	1.3	0.3	0.0	0.4
2003	1.9	0.9	0.2	0.7
2004	1.9	0.9	0.2	0.7
2005	2.9	1.0	0.1	0.4
2006	2.0	1.1	0.1	0.3
2007	2.2	1.5	0.1	0.5
2008	2.9	1.8	0.3	0.6
2009	2.6	1.6	0.2	0.4
2010	3.5	1.7	0.6	0.8
2011	3.2	1.6	0.2	1.9
2012	3.4	1.6	0.4	0.8
2013	4.5	2.6	0.3	0.5

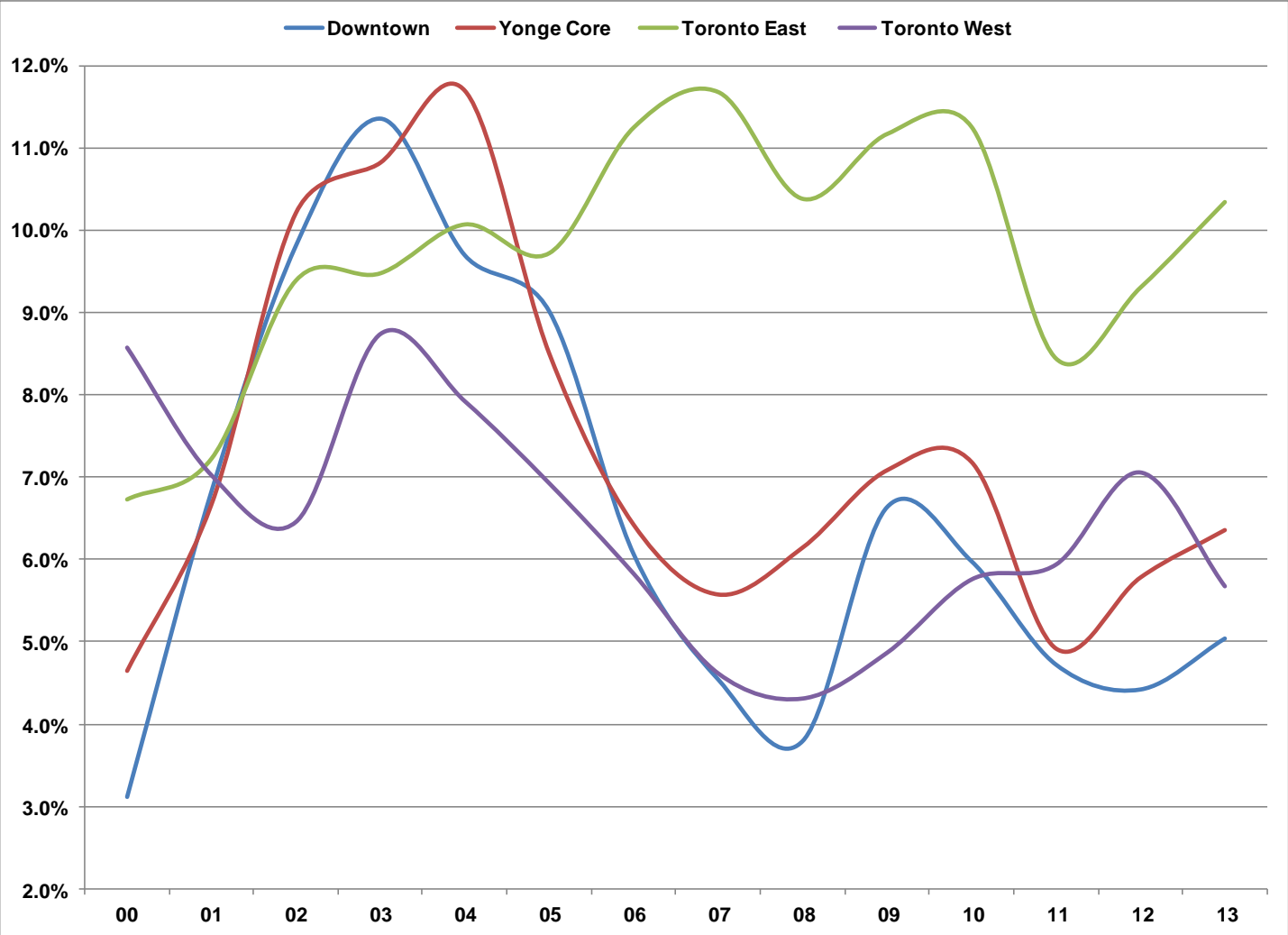
Q4 Office Vacancy Rate



Q4 Office Vacancy Rate

	City of Toronto	"905" Municipalities
2000	4.0%	4.8%
2001	4.2%	5.1%
2002	4.4%	6.5%
2003	4.3%	5.1%
2004	4.2%	5.8%
2005	3.8%	5.4%
2006	4.5%	5.9%
2007	4.7%	5.9%
2008	5.2%	7.1%
2009	5.5%	7.6%
2010	5.2%	6.9%
2011	4.9%	6.6%
2012	4.9%	6.9%
2013	4.9%	6.1%

Q4 Office Vacancy Rates

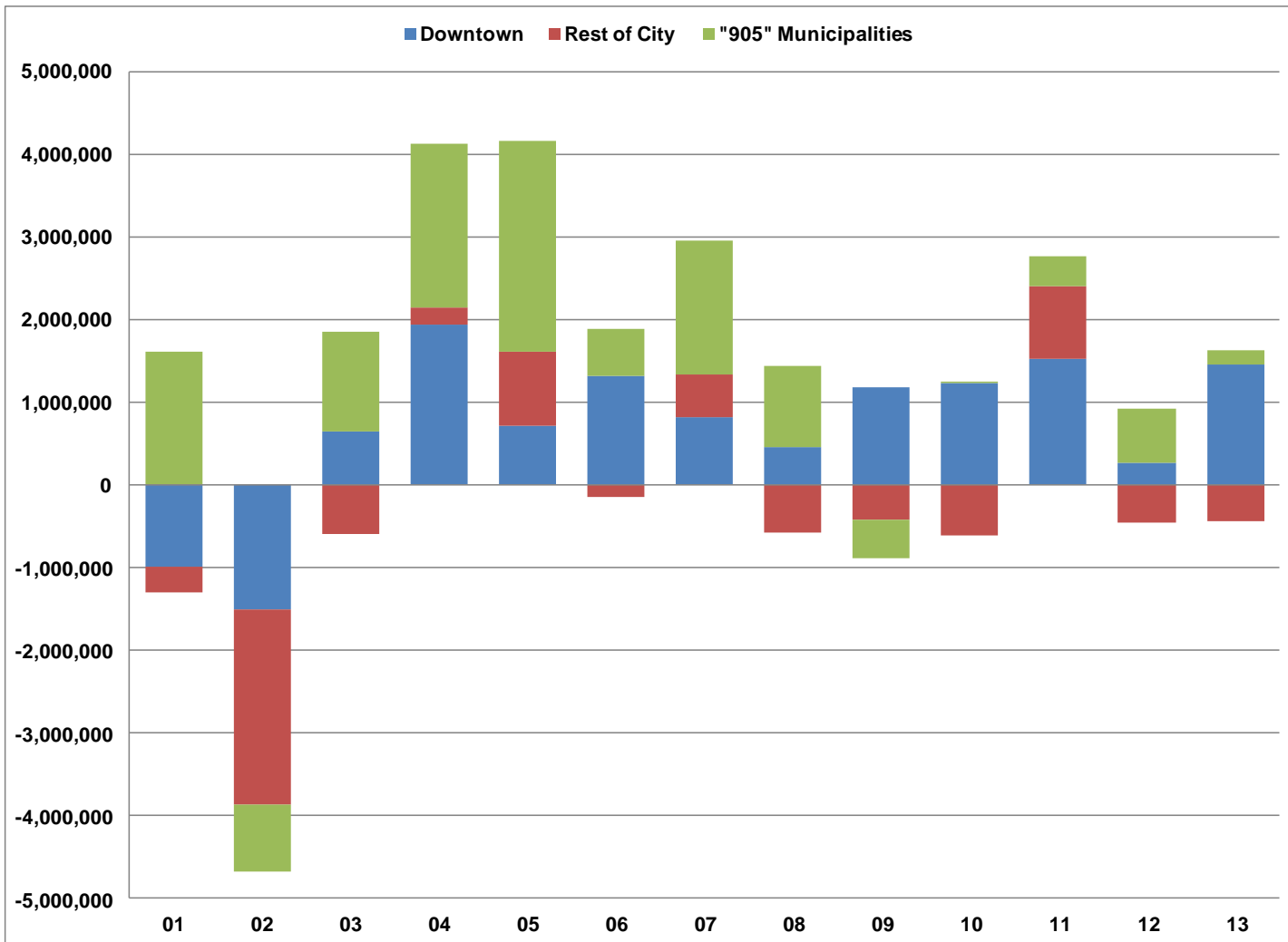


Q4 Office Vacancy Rates

	Downtown	Yonge Core	Toronto East	Toronto West	City of Toronto
2000	3.1%	4.6%	6.7%	8.6%	4.5%
2001	6.8%	6.7%	7.2%	7.0%	6.9%
2002	9.8%	10.2%	9.4%	6.5%	9.6%
2003	11.4%	10.8%	9.5%	8.7%	10.8%
2004	9.7%	11.7%	10.1%	7.9%	10.0%
2005	9.0%	8.5%	9.7%	6.9%	8.9%
2006	6.1%	6.4%	11.2%	5.8%	6.9%
2007	4.5%	5.6%	11.7%	4.6%	5.9%
2008	3.8%	6.1%	10.4%	4.3%	5.3%
2009	6.6%	7.1%	11.2%	4.9%	7.3%
2010	6.0%	7.2%	11.3%	5.8%	7.0%
2011	4.7%	4.9%	8.4%	5.9%	5.4%
2012	4.4%	5.8%	9.3%	7.1%	5.6%
2013	5.0%	6.4%	10.3%	5.7%	6.1%

Annual Change in Occupied Office Space

Toronto Region (square feet)

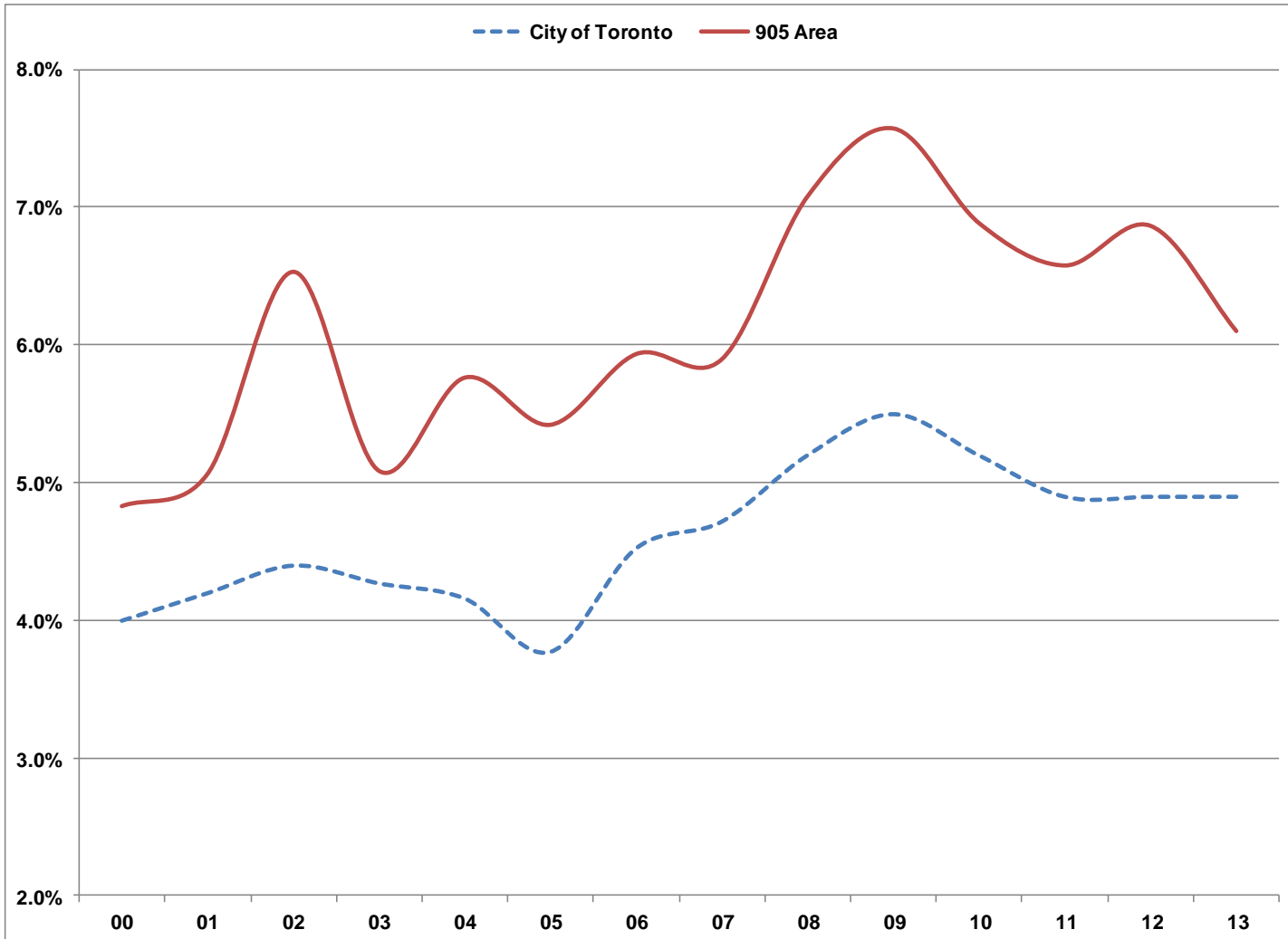


Annual Change in Occupied Office Space

Toronto Region (square feet)

	Downtown	Rest of City	"905" Municipalities	Total
2001	-986,432	-324,349	1,603,493	292,712
2002	-1,509,859	-2,354,737	-820,438	-4,685,034
2003	644,292	-601,371	1,205,147	1,248,068
2004	1,941,282	201,675	1,976,368	4,119,325
2005	705,728	909,166	2,539,840	4,154,734
2006	1,316,807	-148,150	563,813	1,732,470
2007	816,828	507,938	1,633,199	2,957,965
2008	456,265	-574,536	979,372	861,101
2009	1,181,967	-420,293	-466,919	294,755
2010	1,226,009	-605,815	10,351	630,545
2011	1,524,537	885,326	355,500	2,765,363
2012	264,451	-450,952	654,522	468,021
2013	1,446,924	-434,849	174,658	1,186,733
2003-08 (6yrs)	5,881,202	294,722	8,897,739	15,073,663
2009-13 (5yrs)	5,643,888	-1,026,583	728,112	5,345,417
2003-13 (11 yrs)	11,525,090	-731,861	9,625,851	20,419,080

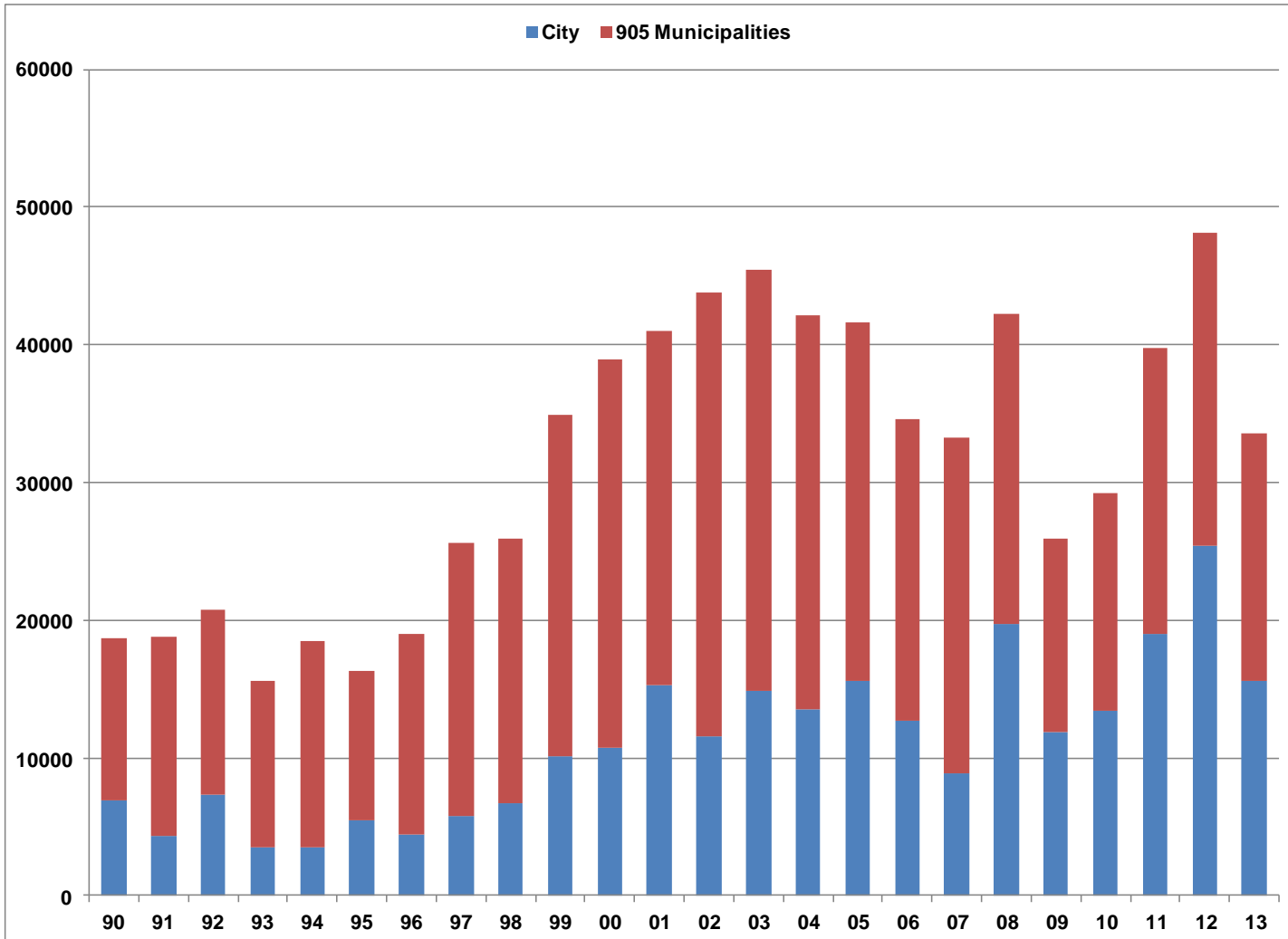
Q4 Industrial Vacancy Rates



Q4 Industrial Vacancy Rates

	City of Toronto	905 Area
2000	4.0%	4.8%
2001	4.2%	5.1%
2002	4.4%	6.5%
2003	4.3%	5.1%
2004	4.2%	5.8%
2005	3.8%	5.4%
2006	4.5%	5.9%
2007	4.7%	5.9%
2008	5.2%	7.1%
2009	5.5%	7.6%
2010	5.2%	6.9%
2011	4.9%	6.6%
2012	4.9%	6.9%
2013	4.9%	6.1%

Housing Starts Toronto Region



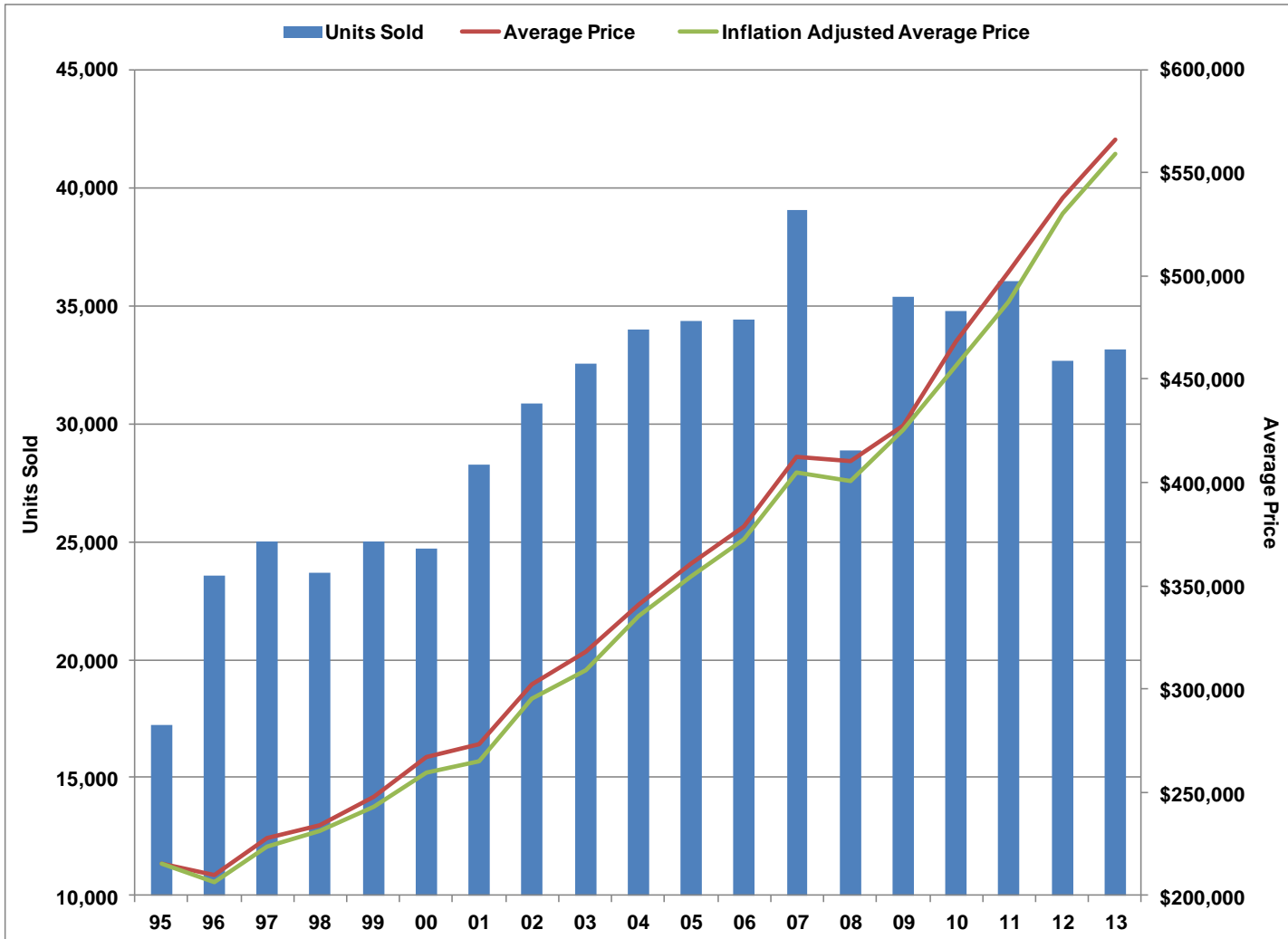
Housing Starts

Toronto Region

	City	905 Municipalities	Toronto CMA
1990	6872	11851	18723
1991	4304	14510	18814
1992	7298	13472	20770
1993	3478	12159	15637
1994	3515	14928	18443
1995	5499	10826	16325
1996	4406	14592	18998
1997	5745	19829	25574
1998	6759	19151	25910
1999	10097	24807	34904
2000	10745	28237	38982
2001	15289	25728	41017
2002	11616	32189	43805
2003	14895	30580	45475
2004	13560	28555	42115
2005	15602	25994	41596
2006	12726	21872	34598
2007	8854	24439	33293
2008	19710	22502	42212
2009	11919	14030	25949
2010	13425	15770	29195
2011	18972	20773	39745
2012	25416	22689	48105
2013	15618	17929	33547

MLS Sales and Prices

City of Toronto



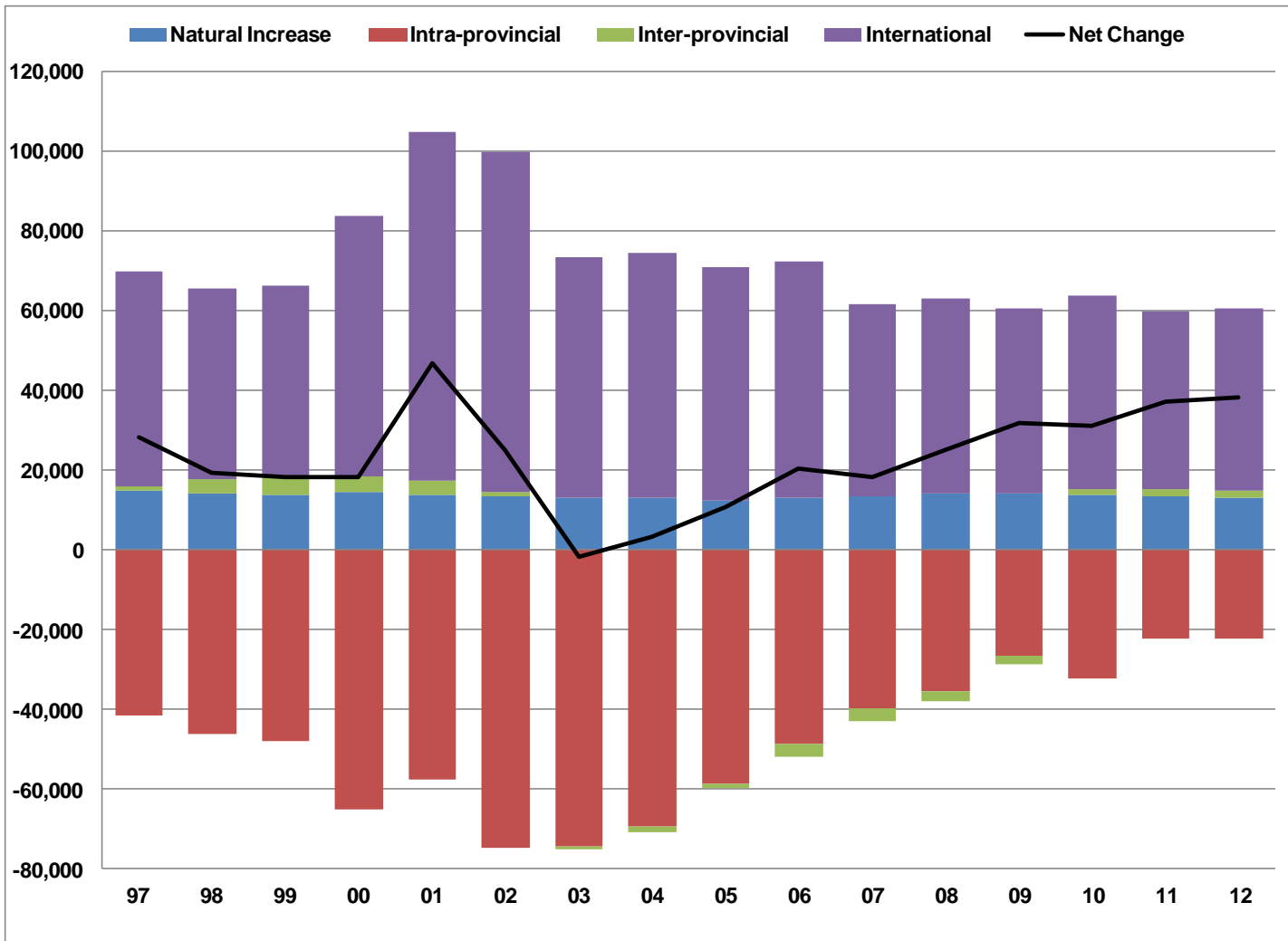
MLS Sales and Prices

City of Toronto

	Units Sold	Average Price	Inflation Adjusted Average Price
1995	17237	215176	215176
1996	23539	210166	206597
1997	24985	227948	223934
1998	23679	233863	231503
1999	24978	247771	242869
2000	24708	266899	259206
2001	28265	273500	265163
2002	30827	301919	295660
2003	32528	318029	308811
2004	33963	340806	335139
2005	34366	361057	354600
2006	34404	378776	372690
2007	39052	412481	404642
2008	28878	410271	400839
2009	35341	427355	425474
2010	34752	468247	456591
2011	36018	501971	487330
2012	32658	538053	530101
2013	33143	565860	558976

Population Change by Component

City of Toronto

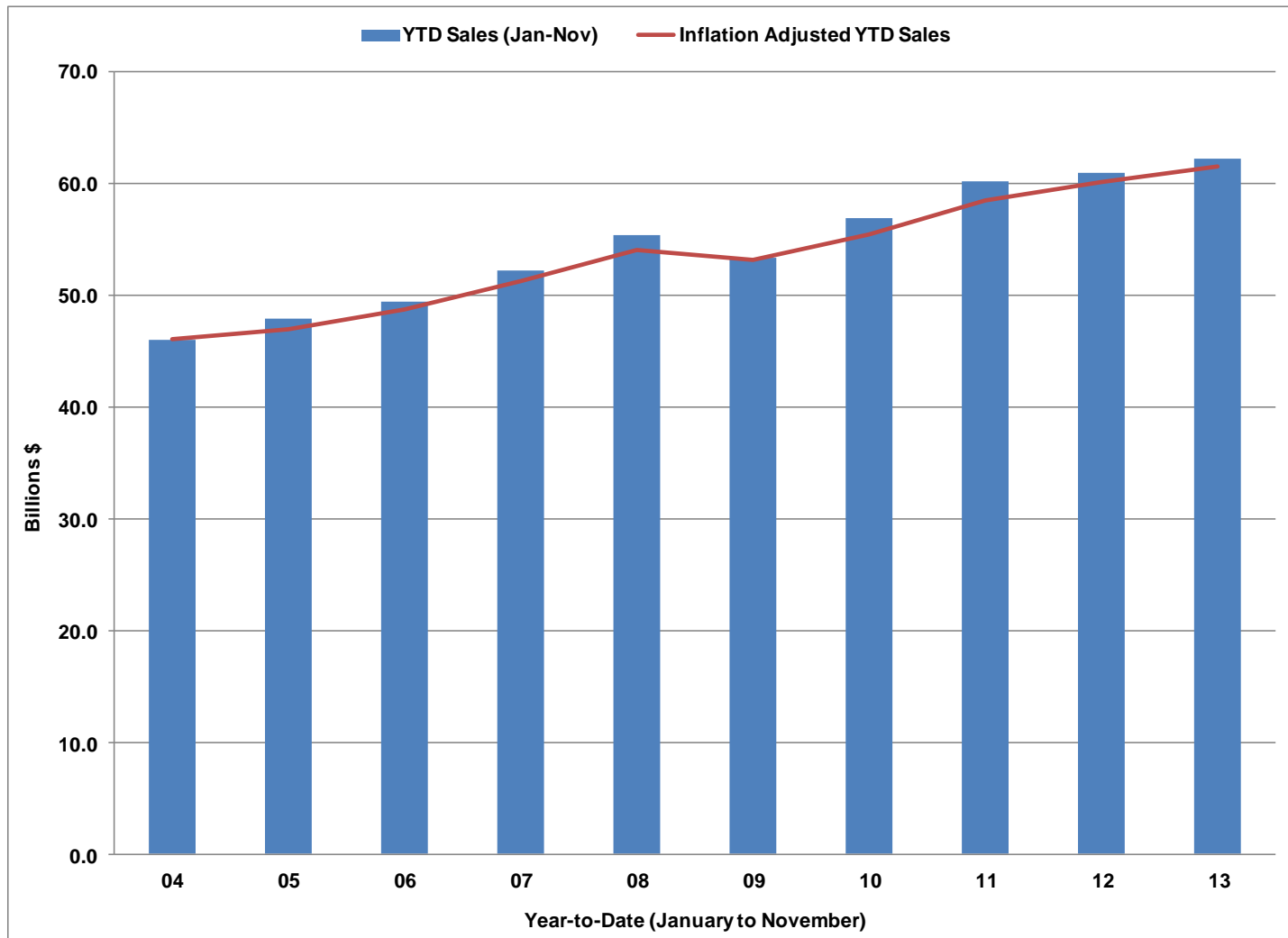


Population Change by Component

City of Toronto

	Natural Increase	Net Intra-provincial	Net Inter-provincial	Net Intern'l Migration	Total Pop'n Change
1996/1997	14,701	-41,625	1,020	54,055	28,151
1997/1998	13,948	-46,313	3,571	47,925	19,131
1998/1999	13,546	-48,134	4,841	47,741	17,994
1999/2000	14,187	-65,304	4,068	65,164	18,115
2000/2001	13,477	-57,804	3,569	87,438	46,680
2001/2002	13,421	-75,000	776	85,514	24,711
2002/2003	12,806	-74,653	-572	60,442	-1,977
2003/2004	12,988	-69,539	-1,514	61,208	3,143
2004/2005	12,359	-58,804	-1,165	58,272	10,662
2005/2006	12,968	-48,816	-3,218	59,345	20,279
2006/2007	13,282	-39,966	-3,326	48,171	18,161
2007/2008	14,039	-35,614	-2,426	48,767	24,766
2008/2009	13,936	-26,743	-2,014	46,520	31,699
2009/2010	13,666	-32,549	1,486	48,343	30,946
2010/2011	13,168	-22,525	1,943	44,394	36,980
2011/2012	12,923	-22,525	1,708	45,901	38,007

Retail Sales Toronto Region



Retail Sales

Toronto Region (\$ Billions)

	Annual Sales	YTD Sales	% Change	Inflation Adjusted YTD Sales	% Change
2004	51.4	46.1		46.1	
2005	53.4	47.9	4.0%	47.0	2%
2006	55.2	49.5	3.3%	48.7	4%
2007	58.2	52.3	5.6%	51.3	5%
2008	60.9	55.4	5.9%	54.1	6%
2009	59.2	53.4	-3.6%	53.1	-2%
2010	63.0	56.9	6.6%	55.5	4%
2011	66.6	60.2	5.8%	58.4	5%
2012	67.1	61.0	1.4%	60.1	3%
2013	N/A	62.3	2.1%	61.5	2%

Year-to-date (YTD) retail sales include sales from January to November for each year.

Ontario Merchandise Exports & US\$ Exchange Rate



Note: December 2013 exports data was not available for this report; therefore data for the last twelve months (Dec. 2012 to Nov. 2013) were used for annual comparison.

Source: Exports - Industry Canada, Exchange Rate - Bank of Canada

Ontario Merchandise Exports & US\$ Exchange Rate

	Exports (Billions \$)			Exchange
	US	All Others	Total	
2001	187.9	13.8	201.7	0.646
2002	192.8	13.7	206.5	0.637
2003	172.8	16.3	189.1	0.714
2004	180.1	18.9	199.0	0.768
2005	178.3	22.5	200.8	0.825
2006	171.7	27.1	198.8	0.882
2007	169.3	33.2	202.5	0.930
2008	155.9	32.8	188.7	0.938
2009	119.2	28.6	147.8	0.876
2010	134.2	34.0	168.2	0.971
2011	142.1	39.1	181.2	1.011
2012	148.1	38.8	187.0	1.000
Dec '12-Nov '13	150.5	38.2	188.7	0.977

