

SAM THE RECORD MAN SIGN

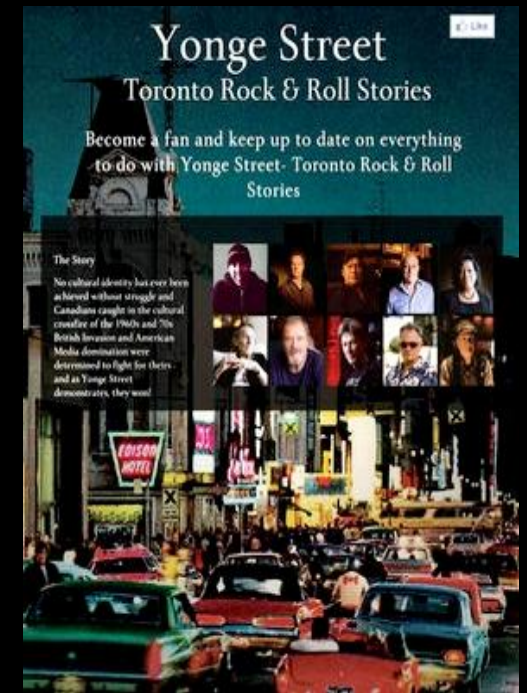
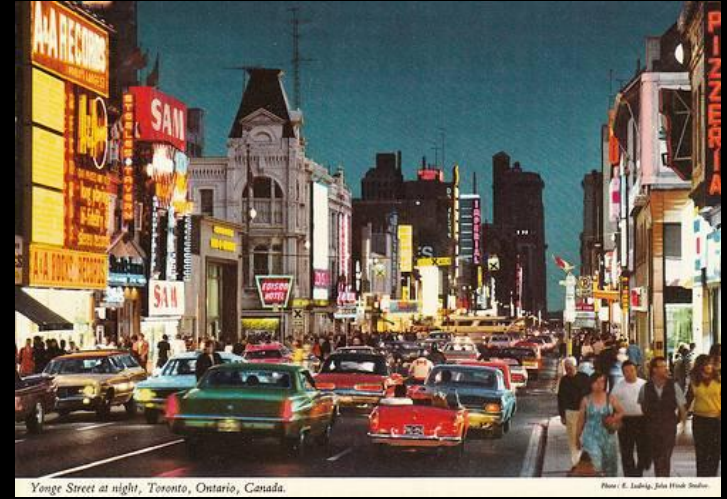
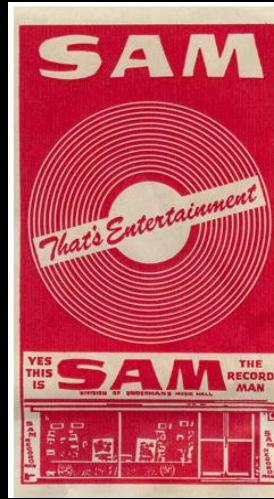
Planning and Growth Management Committee
Staff Presentation



June 19, 2014

Schedule of Meetings

- October 17th meeting with Bobby Sniderman
- October 23rd Site Walk with Councillor Wong-Tam
- Nov 28th Meeting with Ryerson
- Dec 4th Yonge Street BIA meeting
- Dec 13th Interested Planner
- Jan 7th Markle Brothers
- Jan 16th Music Industry Representatives
- Jan 27th Meeting with neighbouring landowner
- Feb 10th Meeting with Save our Sign
- Feb 18th Meeting with Sniderman brothers
- March 7th Meeting with Music Industry representatives
- April 25th Meeting with neighbouring land owner
- April 29th Meeting with Ryerson
- May 26th Meeting with Sniderman brothers
- May 29th Community Consultation #1
- May 30th Community Consultation #2
- June 12th Community Consultation # 3



Three Consistent Messages were heard through our consultations

- 1) On or Close to the Original Location
- 2) Visible from Yonge Street
- 3) Not immediately surrounded or cluttered by other signage

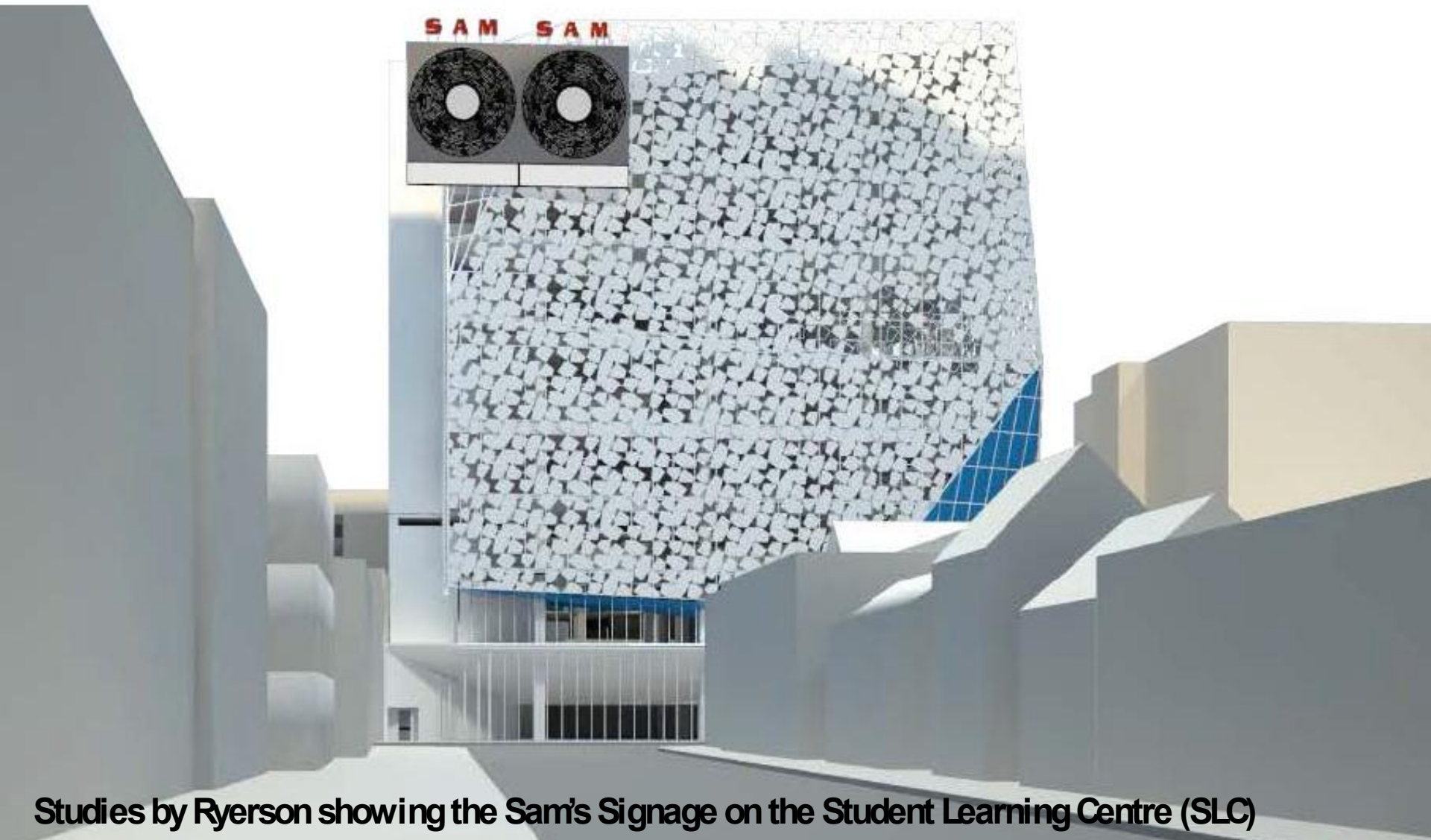




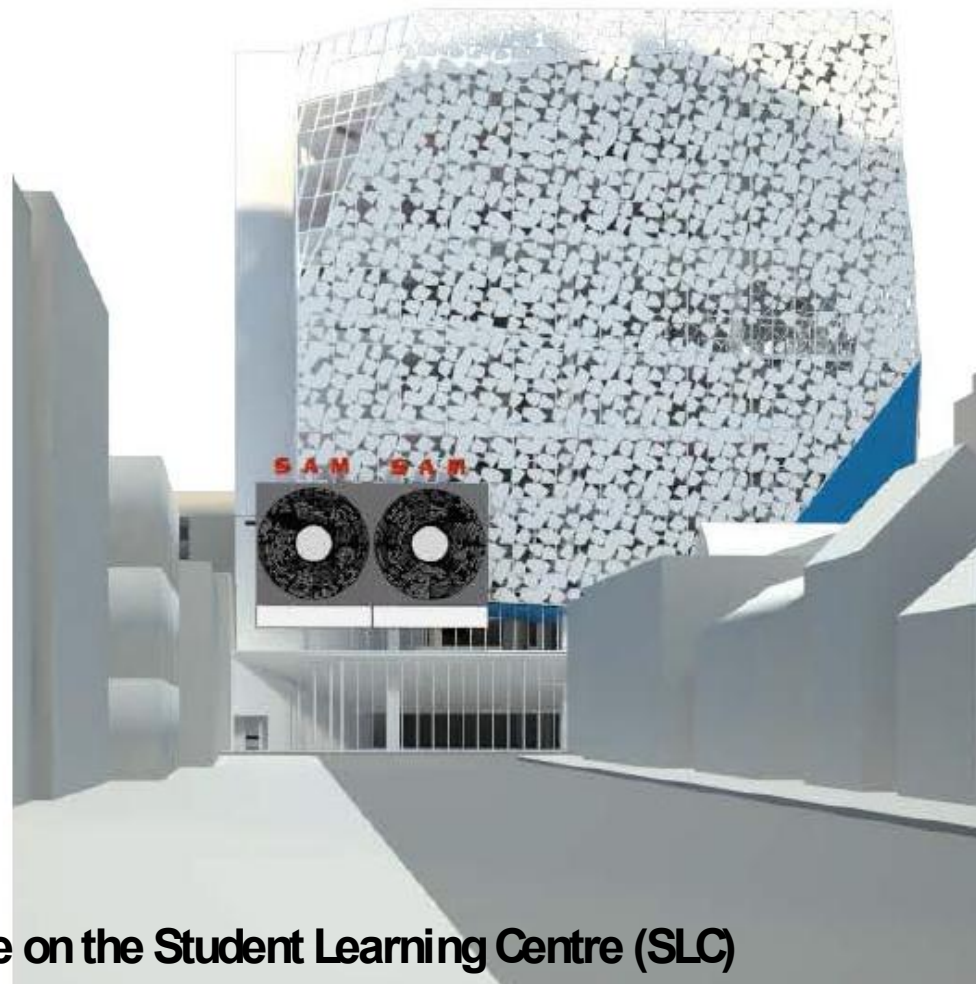
Looking North along Yonge Street towards the SLC Site



Looking North along Yonge Street towards the SLC Site



Studies by Ryerson showing the Sam's Signage on the Student Learning Centre (SLC)



Study by Ryerson showing the Sam's Signage on the Student Learning Centre (SLC)

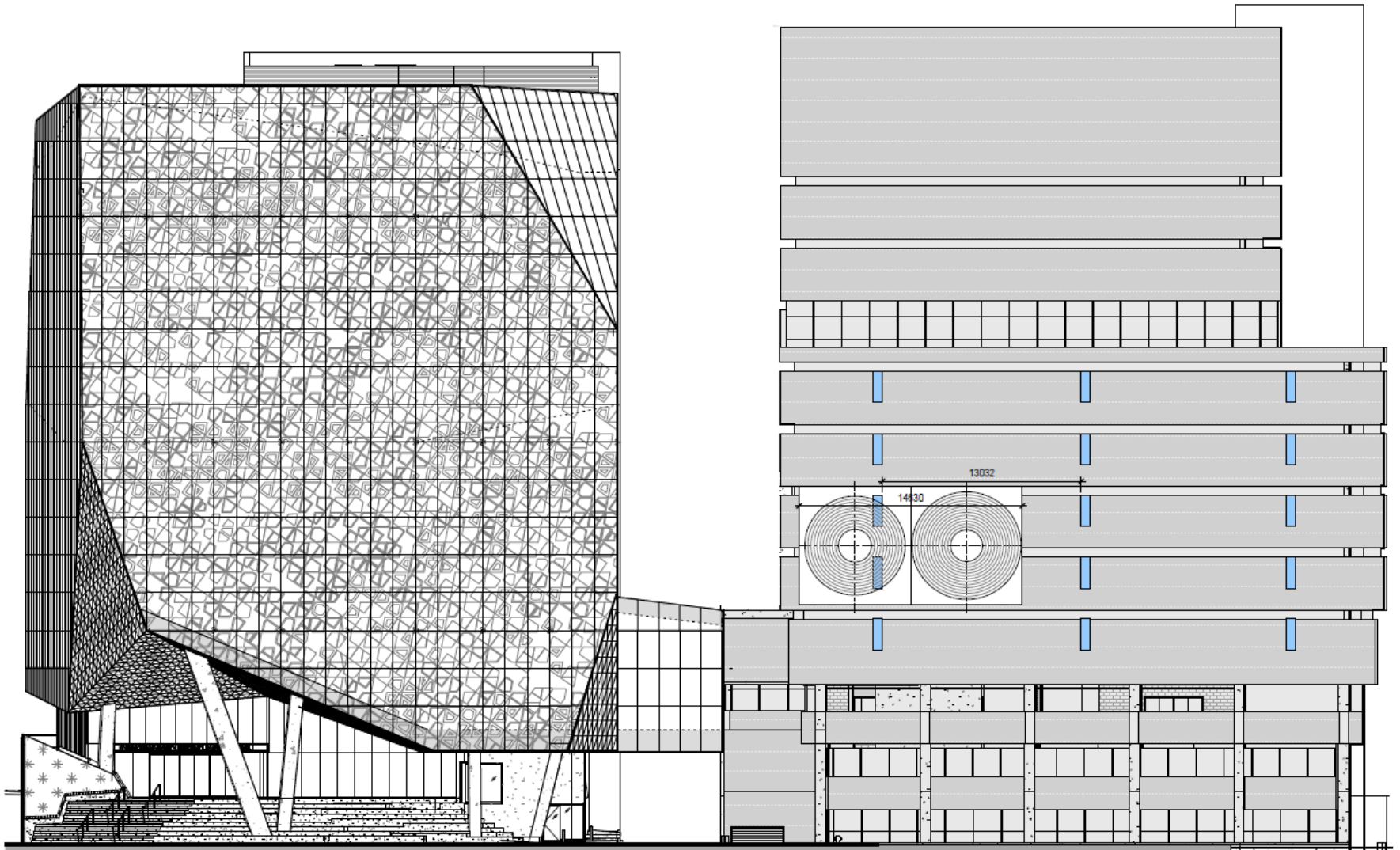


Studies by Ryerson showing the Sam's Signage on the Student Learning Centre (SLC)





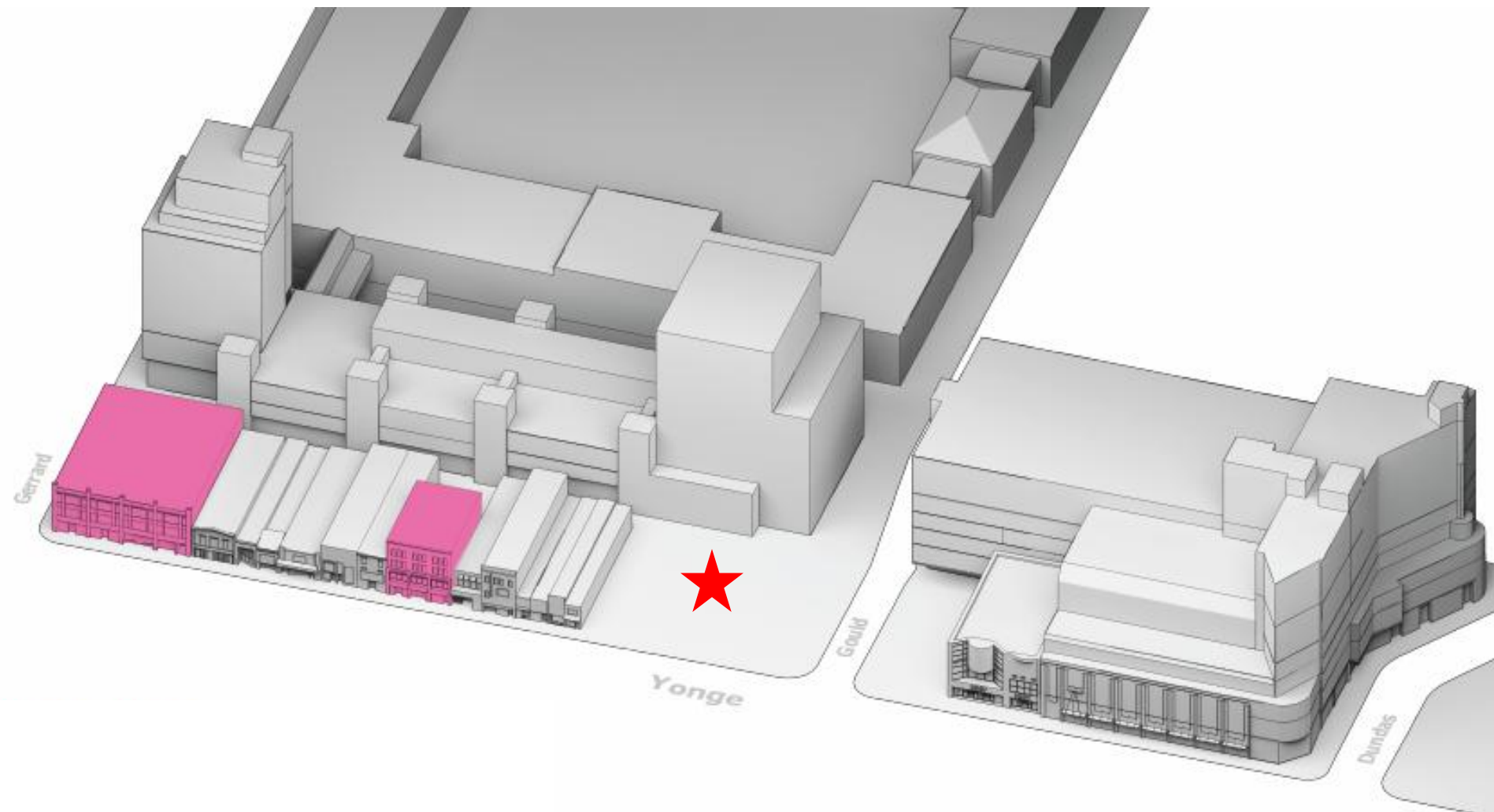
Study by Ryerson showing the Sam's Signage on the Library



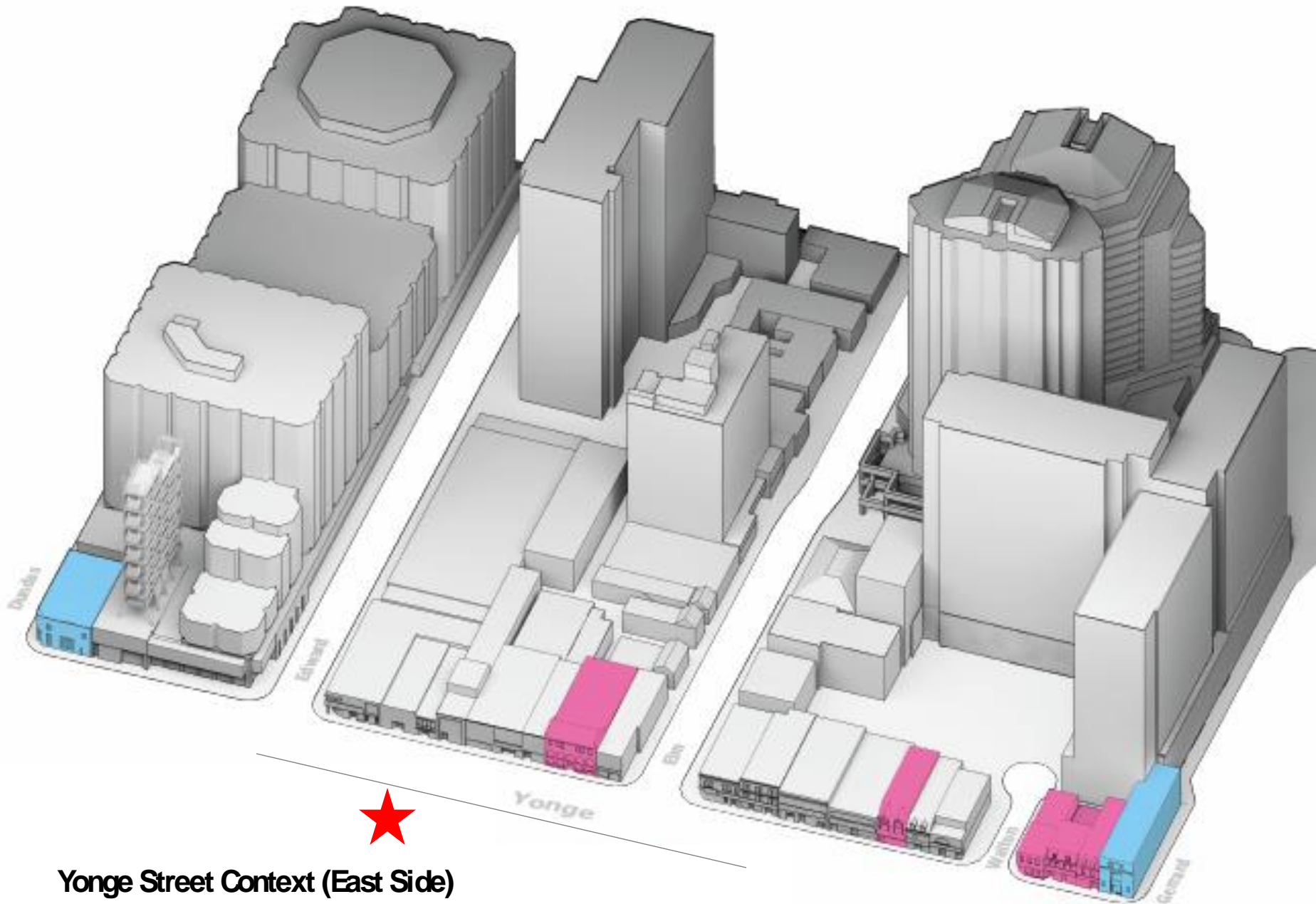
Study by Ryerson showing the Sam's Signage on the Library



Study by Ryerson showing the Sam's Signage on the Library



Yonge Street Context (East Side)



★
Yonge Street Context (East Side)



Image Courtesy of CityNews

October 30, 2013

Looking North from Dundas Square





Image Courtesy of CityNews

October 30, 2013

Looking North West from Dundas Square





CityNews

Image Courtesy of CityNews

October 30, 2013

Looking South from Dundas Square





Image Courtesy of CityNews

October 30, 2013

Looking East towards Dundas Square





Example – "Tip Top" and "Chum" sign's



Example – “Woodward” Sign Vancouver



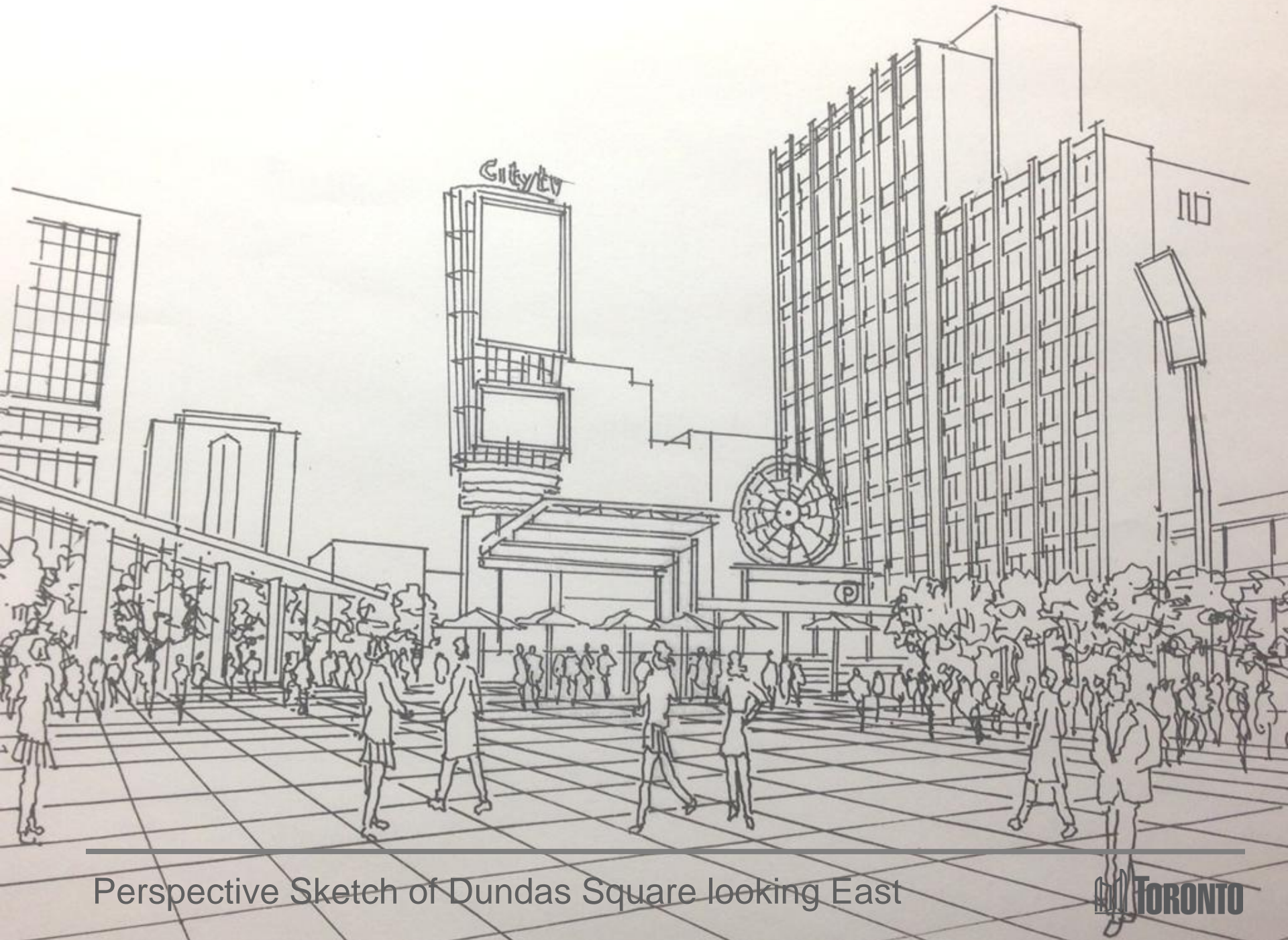
Example – Colgate Clock New Jersey



Dundas Square looking East



Dundas Square looking East



Perspective Sketch of Dundas Square looking East

The Toronto Music Works Building



Looking West towards Dundas Square along Dundas Street



277 Victoria Street and 38 Dundas Street East

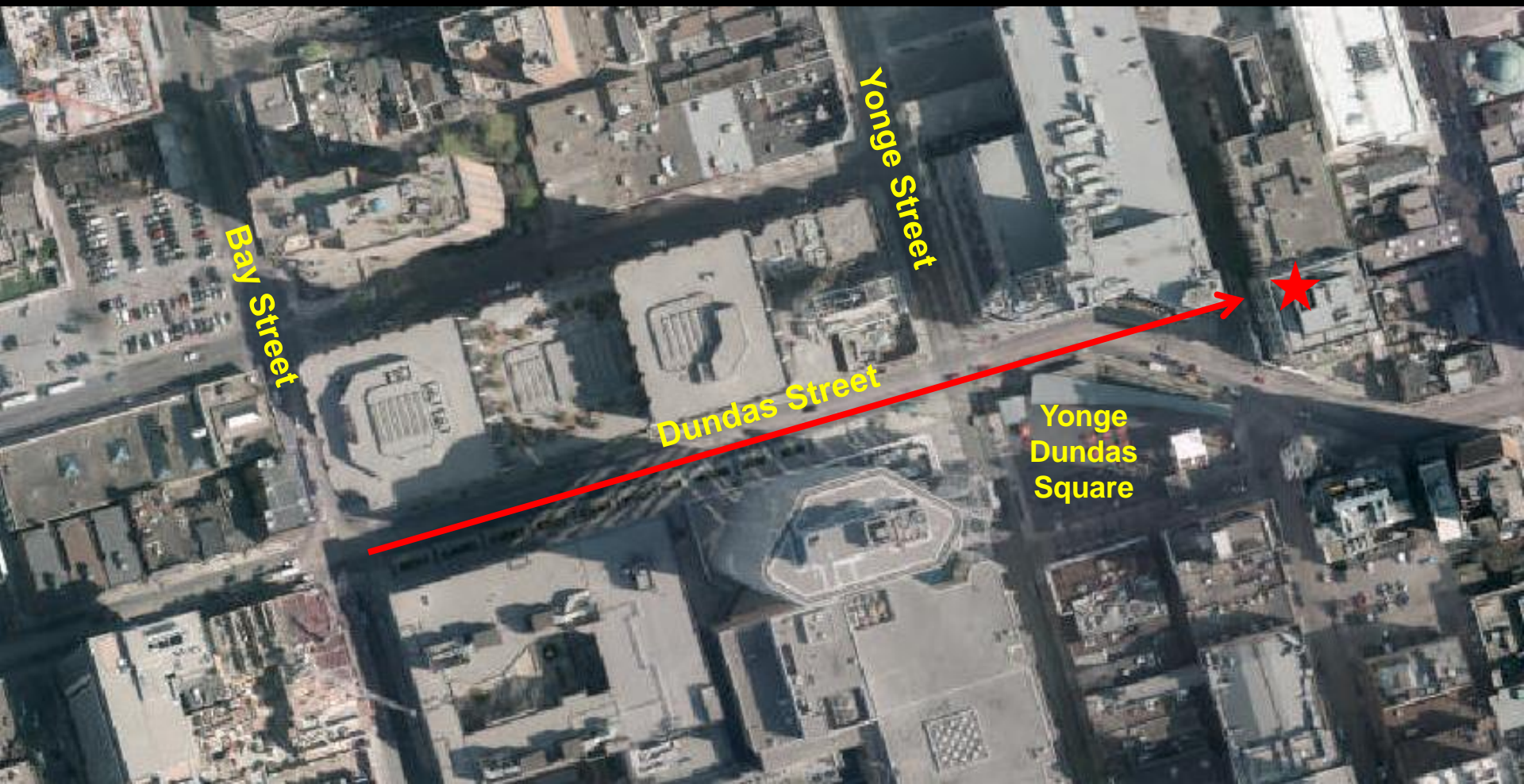
277 Victoria Street





Perspective Sketch of Dundas Square looking East





Sam's signage as a view terminus



Sam's signage as a view terminus



Sam's signage as a view terminus





Sam's signage visible directly above stage

Three Consistent Messages were heard through our consultations

- 1) On or Close to the Original Location
- 2) Visible from Yonge Street
- 3) Not immediately surrounded or cluttered by other signage

Original Location



Recommended Location





Thank You

Misc. and resource slides





WORLD ARCHITECTURE NEWS.COM

THE GLOBAL RESOURCE FOR ARCHITECTURE

TUESDAY 10 SEPTEMBER 2013

SEARCH GO

HOME

CONTACT

« Previous

Next »

LIVE TENDERS

OUR FREE E-NEWSLETTER SIGN UP HERE NEWS REVIEW

WORLD ARCHITECTURE DAY 2013


ASIA... WAN AWARDS LATEST NEWS

JOBS

Ryerson Student Learning Centre, Toronto, Canada

Friday 08 Apr 2011

Heart of glass



Shimmering glass facade to encase new Ryerson Student Learning Centre in Toronto

On Wednesday, Ryerson University President Sheldon Levy unveiled the spectacular design of the Ryerson Student Learning Centre, which will be built at the corner of Yonge and Gould Streets. Designed by the acclaimed international architectural team of Zsolt Partnership Architects of Toronto and Shafetta of Oslo, Norway and New York City, the stunning new building will provide Ryerson students with an outstanding environment in which to study, collaborate and discover.

The eight-storey Student Learning Centre boldly marks Ryerson's new face on Yonge Street. It will feature a dazzling glass facade, a welcoming elevated plaza, a bridge to the existing library and a range of academic, study and collaborative spaces for Ryerson's students, faculty and staff. Yonge Street frontage will feature destination retail at and below grade, creating a prominent commercial façade.

"The notion that learning is a static, solitary activity is outmoded," said, Craig Dykers, principal architect and co-founder, Shafetta. "While it remains important to find places of introspection, it is also vitally important to create places where people can more actively seek knowledge, where social connections can intertwine and where all forms of activity, quiet and loud, can find a suitable home. The design of the Student Learning Centre is foremost about providing these new and diverse functions."

CANADIAN ARCHITECT

HOME > STORY

DAILY NEWS May 31, 2012 4:45 PM - 0 comments

Ryerson University breaks ground on new Student Learning Centre


2012-05-31

Members of Ryerson's community, government officials and community supporters marked a new era for the university at a ceremony on Yonge Street on May 30, 2012 as they broke ground for Ryerson's new Student Learning Centre (SLC). With a dazzling glass "skin" enveloping the exterior, the eight-storey building will make its mark on one of Canada's most famous streets.

"The Student Learning Centre will reinvigorate the corner of Yonge and Gould Streets, creating a dynamic intersection for our school, our neighbourhood and the city," says Sheldon Levy, Ryerson University President. "Our students, faculty and staff will soon have a beautiful building featuring bright, open, technologically rich, barrier-free creative spaces where they can study, collaborate and innovate. With projects such as this, the Mattamy Athletic Centre at the Gardens, and the Ryerson Image Arts Centre, Ryerson is demonstrating our ongoing commitment to city building."

"Yonge Street is Canada's main cultural street and it is essential that we explore new ways of enhancing the vibrancy, culture and character of this neighbourhood," says Kristyn Wong-Tam, City Councillor, Ward 27. "From the mixed-use retail to the striking architecture and services for thousands of students, Ryerson's new Student Learning Centre will be an important addition to the area."

Photos



Larger photo & full caption
File size: 27 KB (400px X 234px)
Caption: ryerson university student learning centre

Related Topics

Architects
Architecture
Educational Facilities
Recreational Buildings

MONITOR THESE TOPICS

Architects
Architecture

Hume: Ryerson's glass vision a dazzler for Yonge and Gould

A proposed student learning centre is a brilliant essay in 21st century university architecture.

Text size: [+](#) [-](#) Reset [Report an Error](#) [+ save to mystar](#)



THE GLOBE AND MAIL


Search: News & Quotes | Jobs

Login Register

Select City

Enter a term, stock symbol or company name

Search



PROFILE

Ryerson a city builder among universities

MARJO JOHNE
Special to The Globe and Mail
Published Monday, Oct. 22 2012, 4:28 PM EDT
Last updated Tuesday, Oct. 23 2012, 5:23 PM EDT

Comments

Print AA

The ceremonial shovels broke ground last May, and soon big machines moved in to tear down the Sam the Record Man building and make way for a new student learning centre at Toronto's Ryerson University.

For the 64-year-old school and its vibrant downtown neighbourhood, the \$112-million project represents the end of an era and the start of a new age. Gone is the iconic music store that stood for almost 50 years on Yonge Street. In its place will be a building of dappled glass and steel, a modernist space for tomorrow's scholars and for the community.

COME ALONG FOR THE RIDE

Follow Globe Drive

DAILY NEWS May 31, 2012 4:45 PM - 0 comments

Ryerson University breaks ground on new Student Learning Centre

2012-05-31

Members of Ryerson's community, government officials and community supporters marked a new era for the university at a ceremony on Yonge Street on May 30, 2012 as they broke ground for Ryerson's new Student Learning Centre (SLC). With a dazzling glass "skin" enveloping its exterior, the eight-storey building will make its mark on one of Canada's most famous streets.

"The Student Learning Centre will reinvigorate the corner of Yonge and Gould Streets, creating a dynamic intersection for our school, our neighbourhood and the city," says Sheldon Levy, Ryerson University President. "Our students, faculty and staff will soon have a beautiful building featuring bright, open, technologically rich, barrier-free creative spaces where they can study, collaborate and innovate. With projects such as this, the Mattamy Athletic Centre at the Gardens and the Ryerson Image Arts Centre, Ryerson is demonstrating our ongoing commitment to city building."

"Yonge Street is Canada's main cultural street and it is essential that we explore new ways of enhancing the vibrancy, culture and character of this neighbourhood," says Kristyn Wong-Tam, City Councilor, Ward 27. "From the mixed-use retail to the striking architecture and services for thousands of students, Ryerson's new Student Learning Centre will be an important addition to the area."

Photos

[Larger photo & full caption](#)

File size: 27 KB (400px X 234px)

Caption: ryerson university student learning centre

Related Topics

[Architects](#)
[Architecture](#)
[Educational Facilities](#)
[Recreational Buildings](#)

MONITOR THESE TOPICS

☒ [Architects](#)
☒ [Architecture](#)
☐

