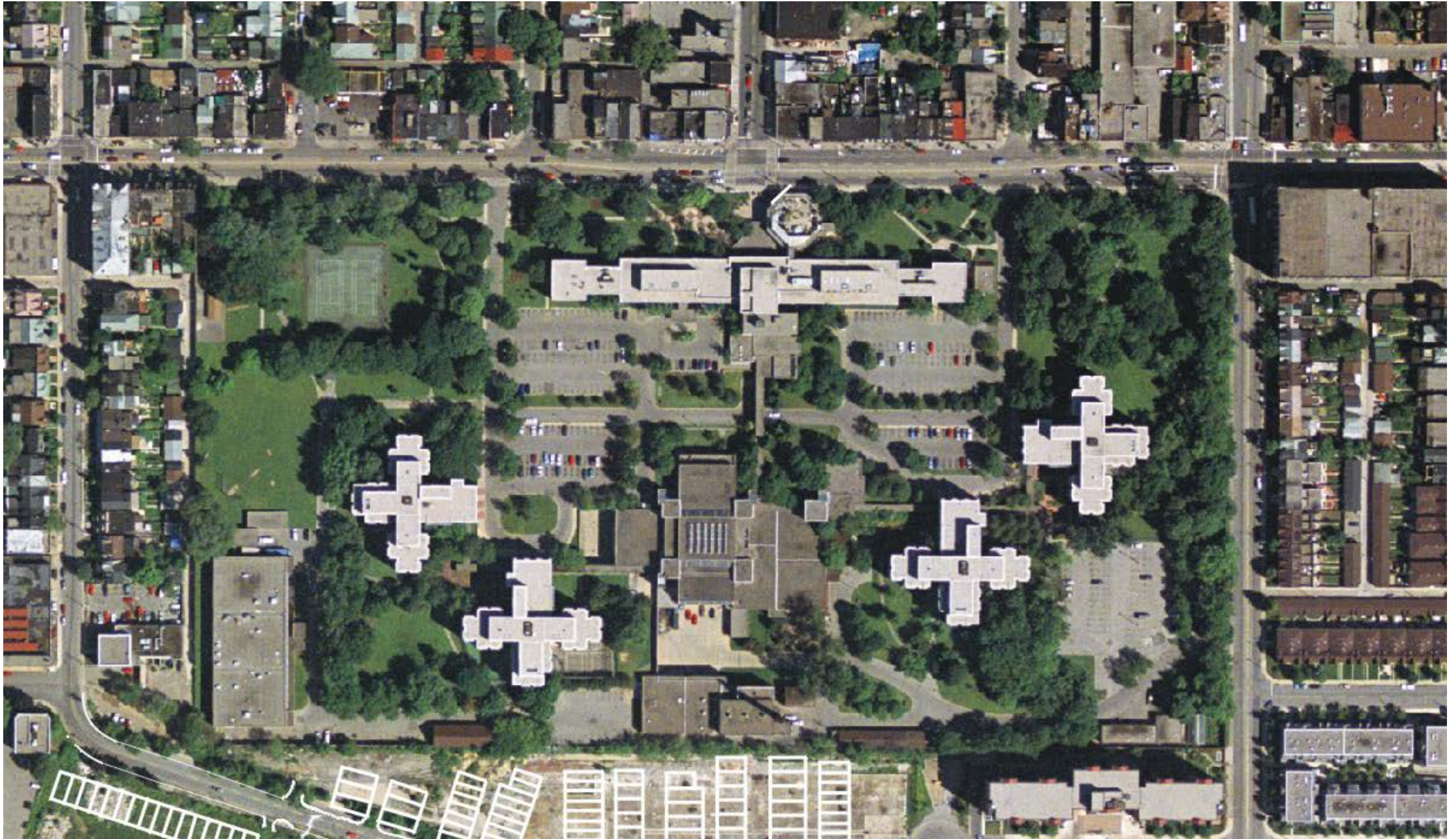


CAMH

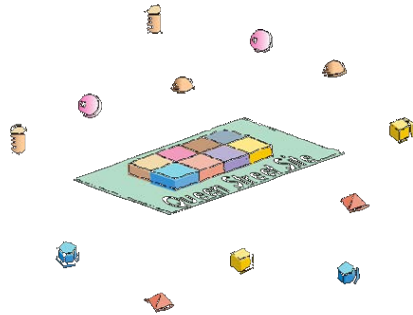
Transforming Lives



CAMH Pre-Master Plan

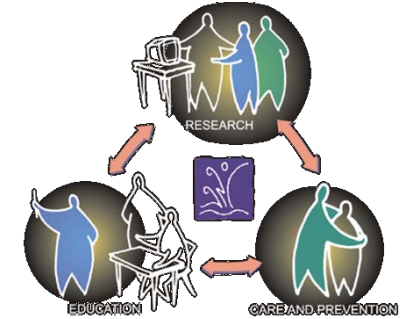


The Master Plan is based on 3 Principles



Create a Hub

A Health Care, Research and Education Village where interaction and collaboration can take place



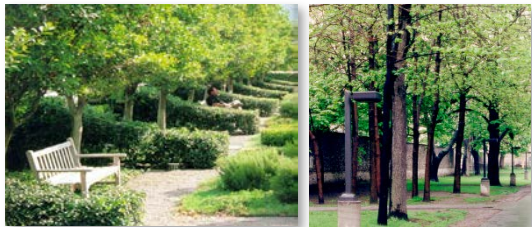
Designed as an Urban Village

A publicly accessible, safe, welcoming and active place integrated with its neighbourhood to remove stigma



Respecting the Landscape

A high quality healing landscape and a public park at Queen and Shaw



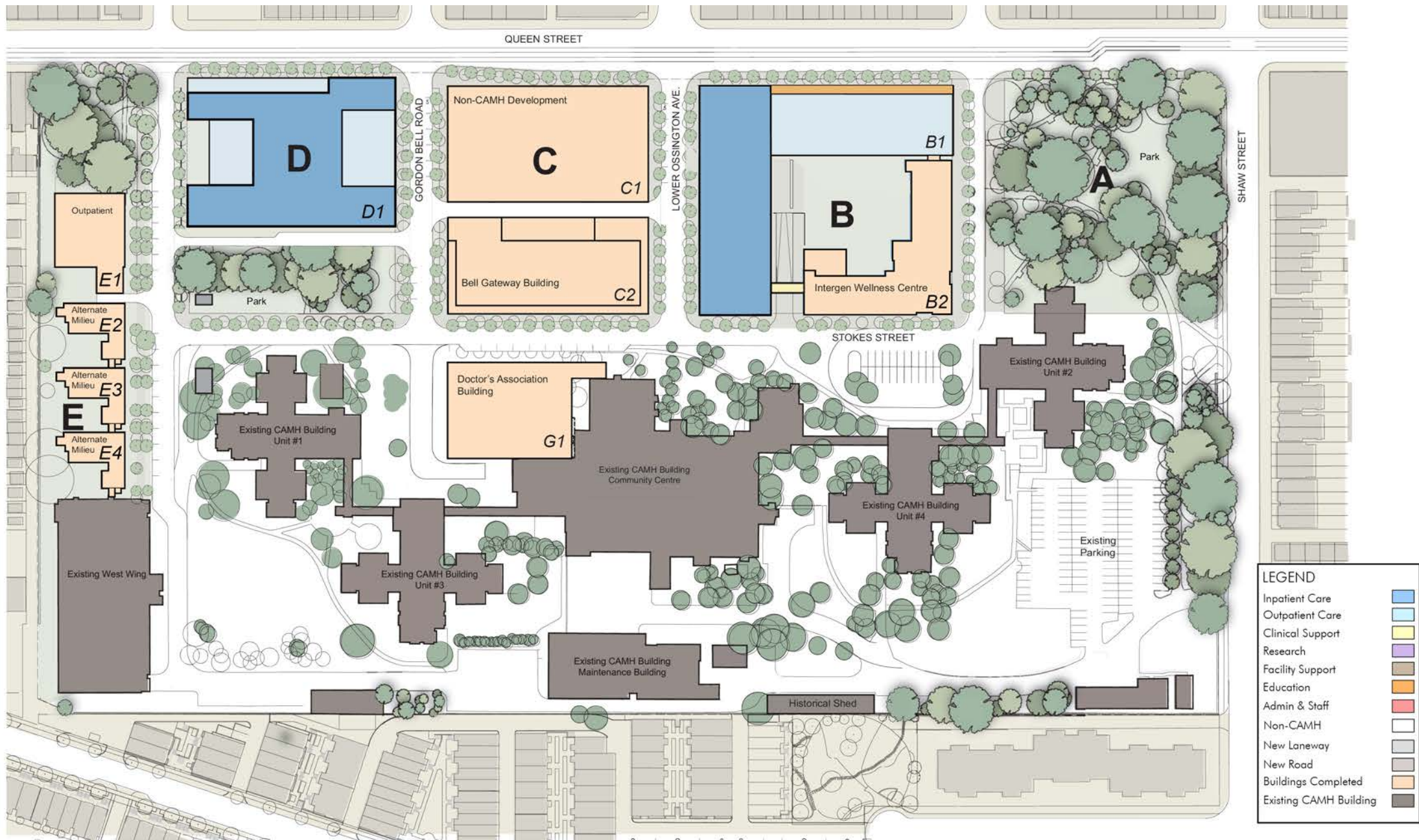
A Master Plan for a New Neighbourhood (2002)



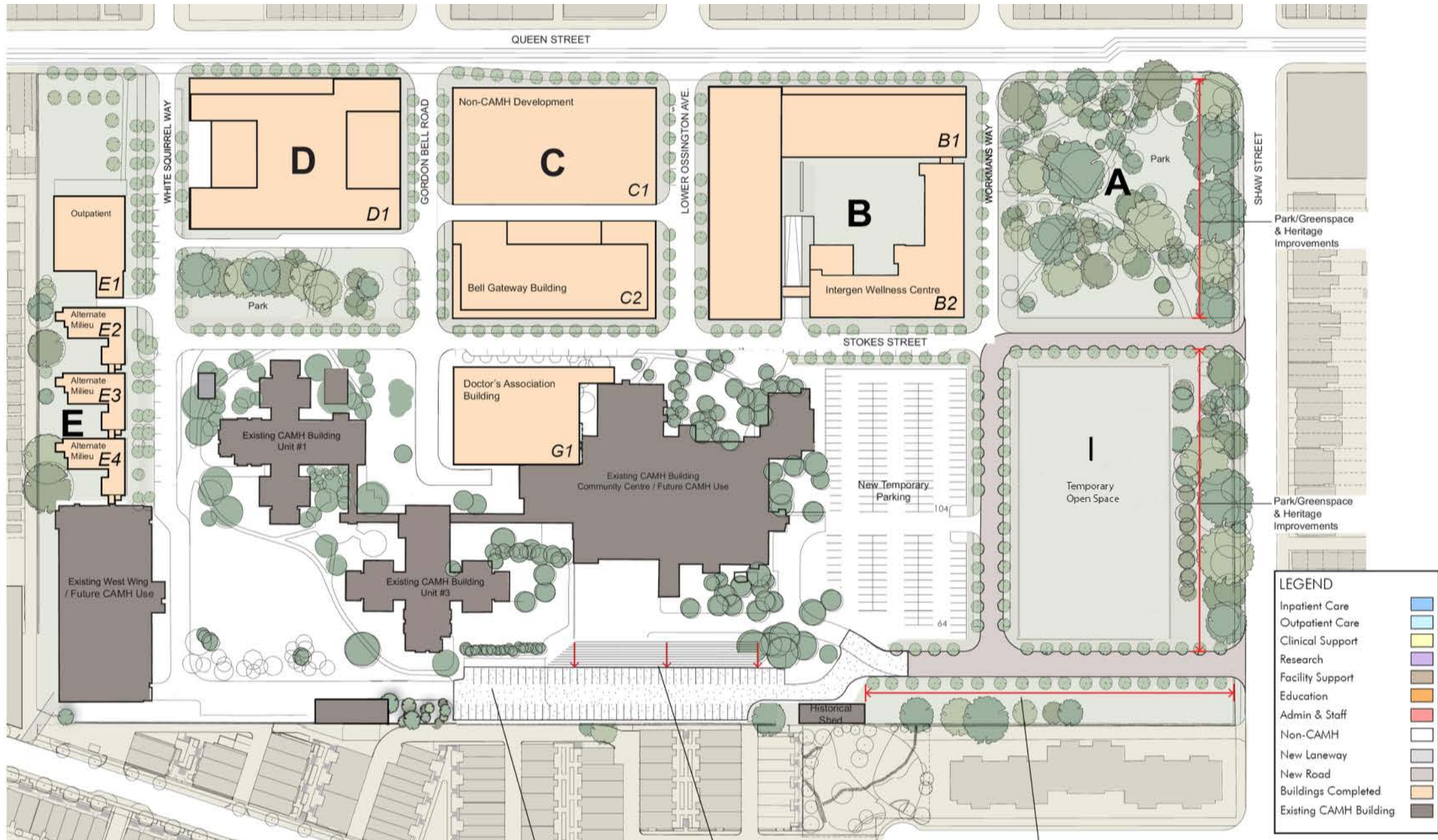
The Historic Wall: Part of our Heritage



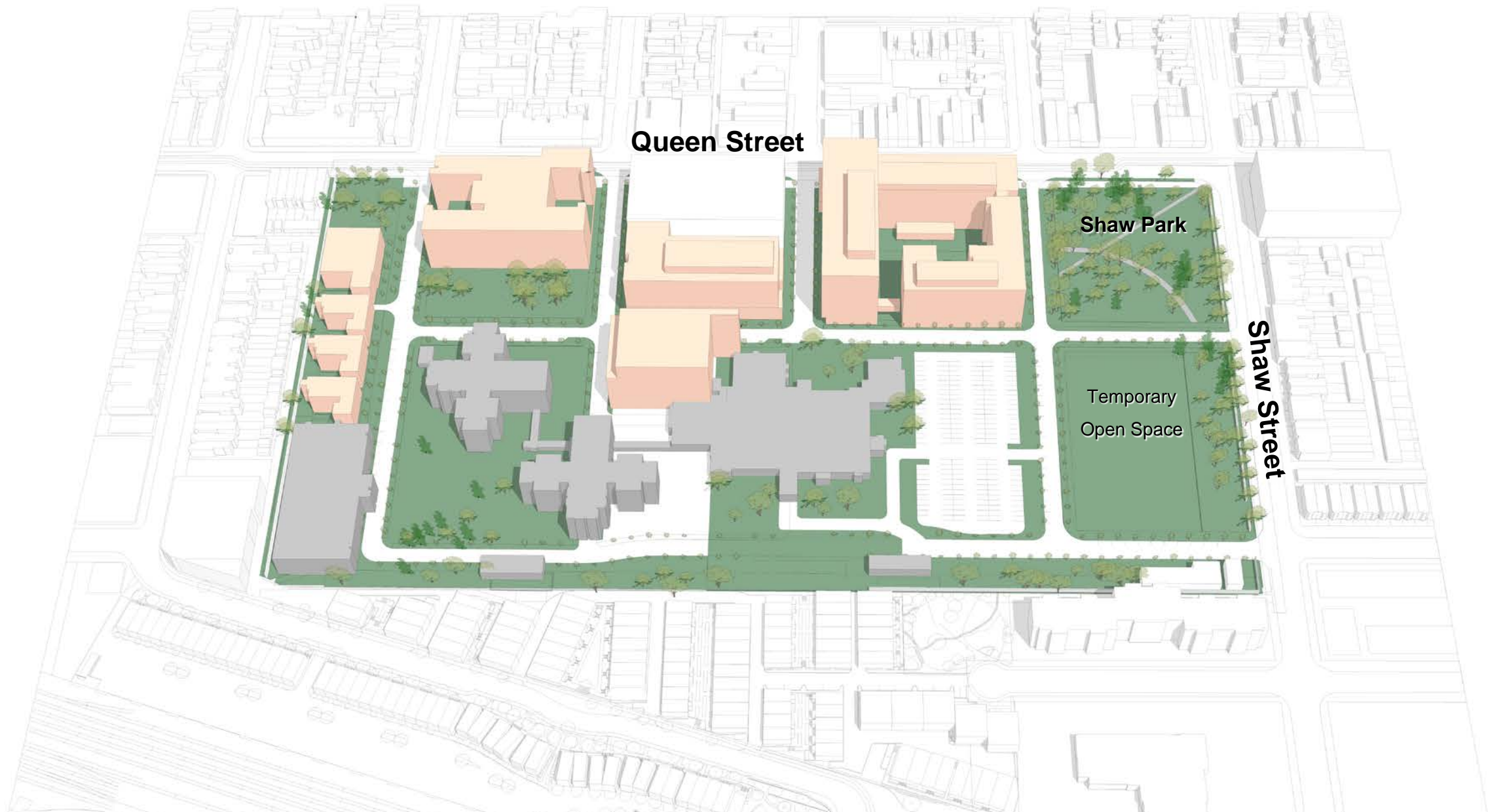
Current proposed phase



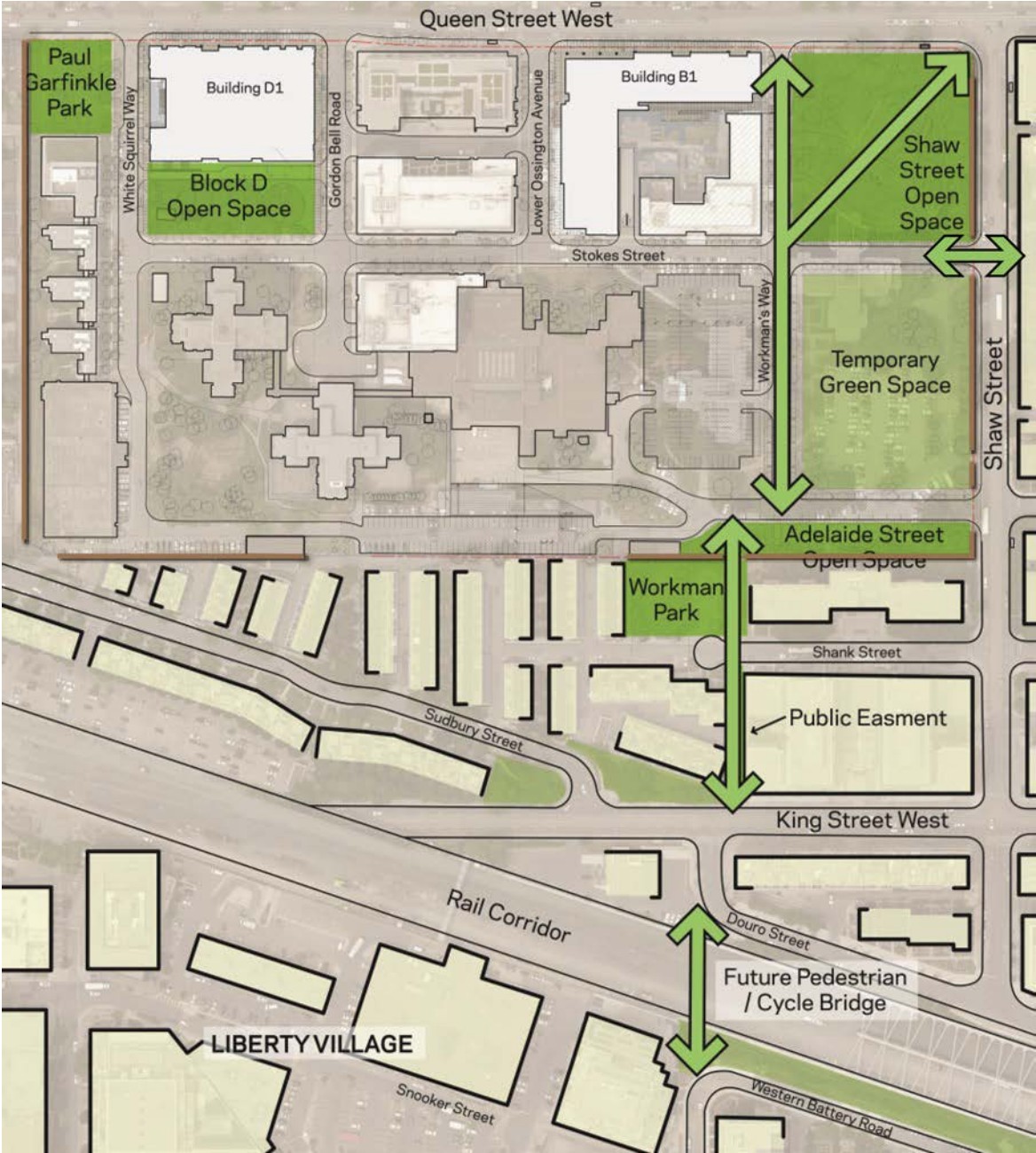
Next phase



Current proposed phase



Enhancing connectivity within the site and neighbourhood



Improving Shaw Park and Queen Street



Proposed Alteration



Existing Wall



Proposed Alteration



Transforming Lives

- Consistent with original Master Plan
- Transforming Shaw Park and Queen Street by making significant public realm improvements
- Ensuring a safe and welcoming park, while respecting the heritage of the site