

All drawings are the property of the Architect and must be returned upon request.
 Contractor shall check all dimensions and report any discrepancies to the Architect before proceeding with the work.

The contractor and/or engineer shall verify all footing elevations and soil bearing capacity prior to excavation and the commencement of work.

DO NOT SCALE DRAWINGS

EXTERIOR MATERIALS LEGEND

- 1 MASONRY - STONE VENEER-1
COLOUR: MANUFACTURER:
MORTAR:
- 2 MASONRY - STONE VENEER-2
COLOUR: MANUFACTURER:
MORTAR:
- 3 MASONRY - BRICK VENEER-1
COLOUR: MANUFACTURER:
MORTAR:
- 4 MASONRY - BRICK VENEER-2
COLOUR: MANUFACTURER:
MORTAR:
- 5 MASONRY - BRICK VENEER-3
COLOUR: MANUFACTURER:
MORTAR:
- 6 FIBRE-CEMENT PANEL-1
COLOUR: MANUFACTURER:
- 7 FIBRE-CEMENT PANEL-2
COLOUR: MANUFACTURER:
- 8 VINYL SIDING-1
COLOUR: MANUFACTURER:
- 9 VINYL SIDING-2
COLOUR: MANUFACTURER:
- 10 VINYL SIDING-3
COLOUR: MANUFACTURER:
- 11 PRECAST CONCRETE (FLUSH)
COLOUR: MANUFACTURER:
MORTAR:
- 12 PRECAST SILL-BANDING (PROJECTION)
COLOUR: MANUFACTURER:
MORTAR:
- 13 PRECAST CONCRETE CAP
COLOUR: MANUFACTURER:
MORTAR:
- 14 PREFINISHED ALUMINUM RAILING
COLOUR: MANUFACTURER:
- 15 PREFINISHED ALUMINUM RAILING
COLOUR: MANUFACTURER:
- 16 EXTERIOR WINDOW/DOOR FRAMES-1
COLOUR: MANUFACTURER:
- 17 EXTERIOR WINDOW/DOOR FRAMES-2
COLOUR: MANUFACTURER:
- 18 EXTERIOR HOLLOW METAL DOOR-1
COLOUR: MANUFACTURER:
- 19 EXTERIOR HOLLOW METAL DOOR-2
COLOUR: MANUFACTURER:



BLOCK 6 WEST ELEVATION

1:100

MODULE ES3 MDL 3G - THE VILLAGE MDL 3E - THE PIER
 MODULE ES1(REV) MDL 2G(REV) - THE TERRACE MDL 2F(REV) - THE FAIRGROUND
 MODULE ES1 MDL 2G - THE TERRACE MDL 2F - THE FAIRGROUND
 MODULE ES1(REV) MDL 2G(REV) - THE TERRACE MDL 2F(REV) - THE FAIRGROUND
 MODULE ES1 MDL 2G - THE TERRACE MDL 2F - THE FAIRGROUND
 MODULE ES1(REV) MDL 2G(REV) - THE TERRACE MDL 2F(REV) - THE FAIRGROUND
 MODULE ES1 MDL 2G - THE TERRACE MDL 2F - THE FAIRGROUND
 MODULE ES1(REV) MDL 2G(REV) - THE TERRACE MDL 2F(REV) - THE FAIRGROUND
 MODULE ES1 MDL 2G - THE TERRACE MDL 2F - THE FAIRGROUND
 MODULE ES1(REV) MDL 2G(REV) - THE TERRACE MDL 2F(REV) - THE FAIRGROUND
 MODULE ES3 MDL 3G - THE VILLAGE MDL 3E - THE PIER

BLOCK 6 NORTH ELEVATION

1:100

MODULE ES3(REV) MDL 3G(REV) - THE VILLAGE MDL 3E(REV) - THE PIER
 MODULE ES3 MDL 3G - THE VILLAGE MDL 3E - THE PIER

BLOCK 6 SOUTH ELEVATION

1:100

MODULE ES3 MDL 3G - THE VILLAGE MDL 3E - THE PIER
 MODULE ES3(REV) MDL 3G(REV) - THE VILLAGE MDL 3E(REV) - THE PIER

BLOCK 6 EAST ELEVATION

1:100

MODULE ES3 MDL 3G - THE VILLAGE MDL 3E - THE PIER
 MODULE ES1(REV) MDL 2G(REV) - THE TERRACE MDL 2F(REV) - THE FAIRGROUND
 MODULE ES1 MDL 2G - THE TERRACE MDL 2F - THE FAIRGROUND
 MODULE ES1(REV) MDL 2G(REV) - THE TERRACE MDL 2F(REV) - THE FAIRGROUND
 MODULE ES1 MDL 2G - THE TERRACE MDL 2F - THE FAIRGROUND
 MODULE ES1(REV) MDL 2G(REV) - THE TERRACE MDL 2F(REV) - THE FAIRGROUND
 MODULE ES1 MDL 2G - THE TERRACE MDL 2F - THE FAIRGROUND
 MODULE ES1(REV) MDL 2G(REV) - THE TERRACE MDL 2F(REV) - THE FAIRGROUND
 MODULE ES1 MDL 2G - THE TERRACE MDL 2F - THE FAIRGROUND
 MODULE ES1(REV) MDL 2G(REV) - THE TERRACE MDL 2F(REV) - THE FAIRGROUND
 MODULE ES3 MDL 3G - THE VILLAGE MDL 3E - THE PIER

no. date revision

MAY 16, 2018 REISSUED FOR SITE PLAN APPLICATION
 AUG 29, 2018 REISSUED FOR SITE PLAN APPLICATION

ONTARIO ASSOCIATION OF ARCHITECTS
 ARCHITECTS
 ARTHUR & MUSCOVITCH
 LICENCE 2733

GUTHRIE MUSCOVITCH ARCHITECTS

Tel: (416) 252-5679 Fax: (416) 252-9637
 770 Brown's Line, Toronto, Ontario M8W 3W2

owner

MINTO

project

3526 LAKE SHORE BLVD.
 TORONTO, ONTARIO

drawing

BLOCK ELEVATIONS BLOCK 6

scale 1/8" = 1.0'

date DEC 2016

drawn CR

chk'd BB

project number 14951

BE-6

All drawings are the property of the Architect and must be returned upon request.
Contractor shall check all dimensions and report any discrepancies to the Architect before proceeding with the work.

The contractor and/or engineer shall verify all footing elevations and soil bearing capacity prior to excavation and the commencement of work.

DO NOT SCALE DRAWINGS

EXTERIOR MATERIALS LEGEND

- 1 MASONRY - STONE VENEER-1
COLOUR:
MANUFACTURER:
MORTAR:
- 2 MASONRY - STONE VENEER-2
COLOUR:
MANUFACTURER:
MORTAR:
- 3 MASONRY - BRICK VENEER-1
COLOUR:
MANUFACTURER:
MORTAR:
- 4 MASONRY - BRICK VENEER-2
COLOUR:
MANUFACTURER:
MORTAR:
- 5 MASONRY - BRICK VENEER-3
COLOUR:
MANUFACTURER:
MORTAR:
- 6 FIBRE-REINFORCED PANEL-1
COLOUR:
MANUFACTURER:
- 7 FIBRE-REINFORCED PANEL-2
COLOUR:
MANUFACTURER:
- 8 VINYL SIDING-1
COLOUR:
MANUFACTURER:
- 9 VINYL SIDING-2
COLOUR:
MANUFACTURER:
- 10 VINYL SIDING-3
COLOUR:
MANUFACTURER:
- 11 PRECAST CONCRETE (FLUSH)
COLOUR:
MANUFACTURER:
MORTAR:
- 12 PRECAST SUB-LANDING (2' PROJECTION)
COLOUR:
MANUFACTURER:
MORTAR:
- 13 PRECAST CONCRETE CAP
COLOUR:
MANUFACTURER:
MORTAR:
- 14 PREFINISHED ALUMINUM RAILING
COLOUR:
MANUFACTURER:
- 15 PREFINISHED ALUMINUM RAILING
COLOUR:
MANUFACTURER:
- 16 EXTERIOR WINDOW/DOOR FRAMES-1
COLOUR:
MANUFACTURER:
- 17 EXTERIOR WINDOW/DOOR FRAMES-2
COLOUR:
MANUFACTURER:
- 18 EXTERIOR HOLLOW METAL DOOR-1
COLOUR:
MANUFACTURER:
- 19 EXTERIOR HOLLOW METAL DOOR-2
COLOUR:
MANUFACTURER:

BLOCK 7
WEST ELEVATION

1:100



BLOCK 7
NORTH ELEVATION

1:100



BLOCK 7
SOUTH ELEVATION

1:100



BLOCK 7
EAST ELEVATION

1:100



| | | |
|-----|------------|----------------------------------|
| no. | date | revision |
| 1 | 16/05/2018 | ISSUED FOR SITE PLAN APPLICATION |
| 2 | 16/06/2018 | ISSUED FOR SITE PLAN APPLICATION |

1 MAY 16, 2018 REISSUED FOR SITE PLAN APPLICATION
4 16/06/2018 ISSUED FOR SITE PLAN APPLICATION

no. date revision

ONTARIO ASSOCIATION
of
ARCHITECTS
A. Guthrie & A. Muscovitch
ARTHUR & MUSCOVITCH
LICENCE
2733

GUTHRIE MUSCOVITCH
ARCHITECTS

Tel: (416) 252-5679 Fax: (416) 252-9637
770 Brown's Line, Toronto, Ontario M8W 3W2

owner
MINTO

project
3526 LAKE SHORE BLVD.
TORONTO, ONTARIO

drawing
BLOCK ELEVATIONS
BLOCK 7

scale
1/8" = 1.0'

date
DEC 2016

drawn
CR

chk'd
BB

project number
14951

BE-7

All drawings are the property of the Architect and must be returned upon request.
 Contractor shall check all dimensions and report any discrepancies to the Architect before proceeding with the work.
 The contractor and/or engineer shall verify u/s footing elevations and soil bearing capacity prior to excavation and the commencement of work.
DO NOT SCALE DRAWINGS

| EXTERIOR MATERIALS LEGEND | |
|---------------------------|---|
| 1 | MASONRY - STONE VENEER-1 COLOUR: MORTAR MANUFACTURER: MORTAR |
| 2 | MASONRY - STONE VENEER-2 COLOUR: MORTAR MANUFACTURER: MORTAR |
| 3 | MASONRY - BRICK VENEER-1 COLOUR: MORTAR MANUFACTURER: MORTAR |
| 4 | MASONRY - BRICK VENEER-2 COLOUR: MORTAR MANUFACTURER: MORTAR |
| 5 | MASONRY - BRICK VENEER-3 COLOUR: MORTAR MANUFACTURER: MORTAR |
| 6 | FIBRE-CEMENT PANEL-1 COLOUR: MORTAR MANUFACTURER: MORTAR |
| 7 | FIBRE-CEMENT PANEL-2 COLOUR: MORTAR MANUFACTURER: MORTAR |
| 8 | VINAL SING - 1 COLOUR: MORTAR MANUFACTURER: MORTAR |
| 9 | VINAL SING - 2 COLOUR: MORTAR MANUFACTURER: MORTAR |
| 10 | VINAL SING - 3 COLOUR: MORTAR MANUFACTURER: MORTAR |
| 11 | PRECAST CONCRETE (FLUSH) COLOUR: MORTAR MANUFACTURER: MORTAR |
| 12 | PRECAST SELF-BANDING (PROJECTION) COLOUR: MORTAR MANUFACTURER: MORTAR |
| 13 | PRECAST CONCRETE CAP COLOUR: MORTAR MANUFACTURER: MORTAR |
| 14 | PREFINISHED ALUMINIUM RAILING COLOUR: MORTAR MANUFACTURER: MORTAR |
| 15 | PREFINISHED ALUMINIUM RAILING COLOUR: MORTAR MANUFACTURER: MORTAR |
| 16 | EXTERIOR WINDOW/DOOR FRAMES - 1 COLOUR: MORTAR MANUFACTURER: MORTAR |
| 17 | EXTERIOR WINDOW/DOOR FRAMES - 2 COLOUR: MORTAR MANUFACTURER: MORTAR |
| 18 | EXTERIOR HOLLOW METAL DOOR - 1 COLOUR: MORTAR MANUFACTURER: MORTAR |
| 19 | EXTERIOR HOLLOW METAL DOOR - 2 COLOUR: MORTAR MANUFACTURER: MORTAR |

| | | |
|-----|--------------|-------------------------------------|
| 1 | | |
| 2 | | |
| 3 | | |
| 4 | MAY 16, 2016 | RE-ISSUED FOR SITE PLAN APPLICATION |
| 5 | AUG 4, 2017 | RE-ISSUED FOR SITE PLAN APPLICATION |
| no. | date | revision |



GUTHRIE MUSCOVITCH
 ARCHITECTS
 Tel: (416) 252-5679 Fax: (416) 252-9637
 770 Brown's Line, Toronto, Ontario M5W 3W2

owner
MINTO
 500-90 SHEPPARD AVE. E
 TORONTO, ONTARIO

project
 3526 LAKESHORE BLVD
 TORONTO, ONTARIO

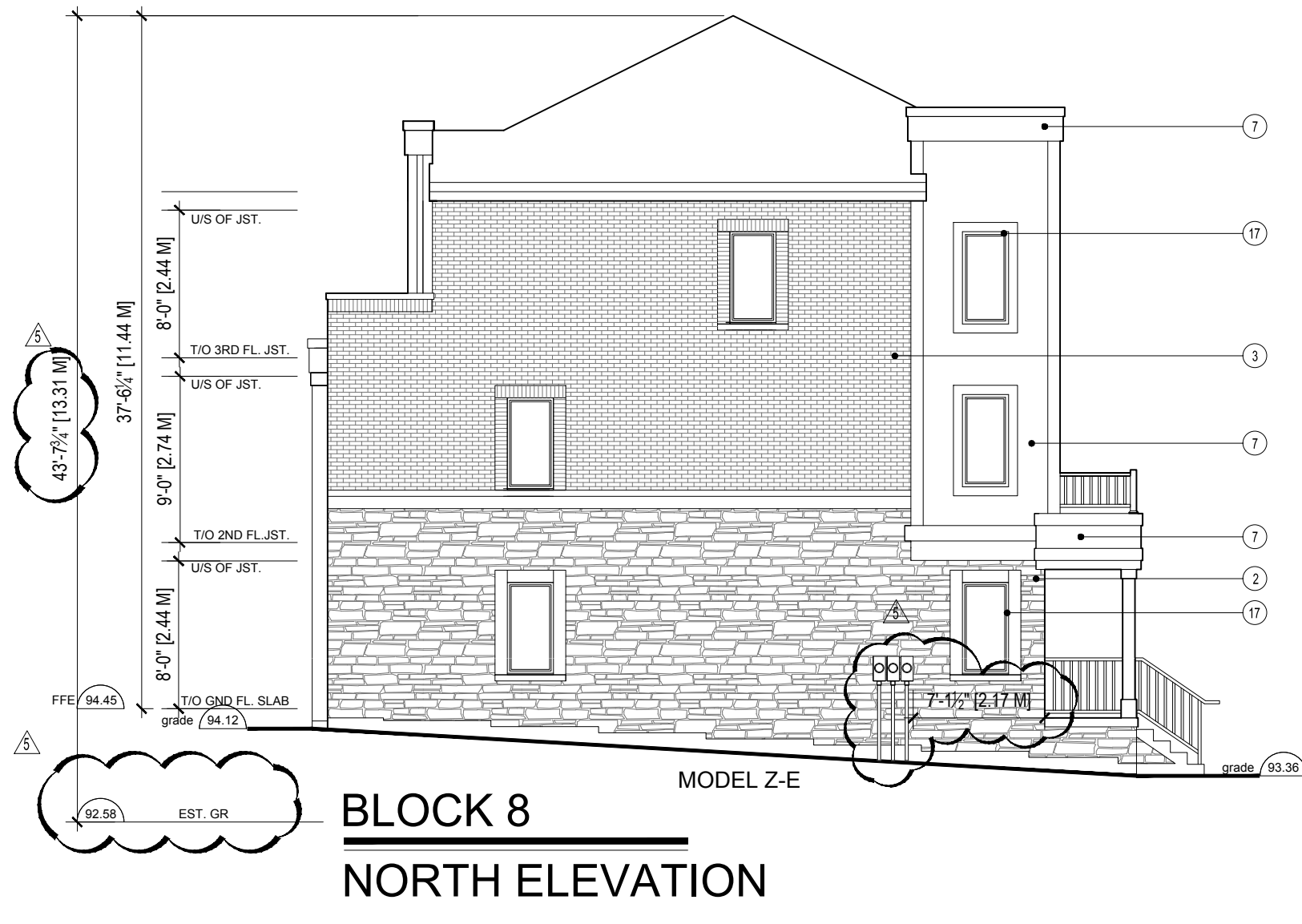
drawing
BLOCK 8
 BLOCK ELEVATIONS

scale 1:100
 date DEC 2016
 drawn BB, CR
 ch'd GMA
 project number 14.951

BE-8



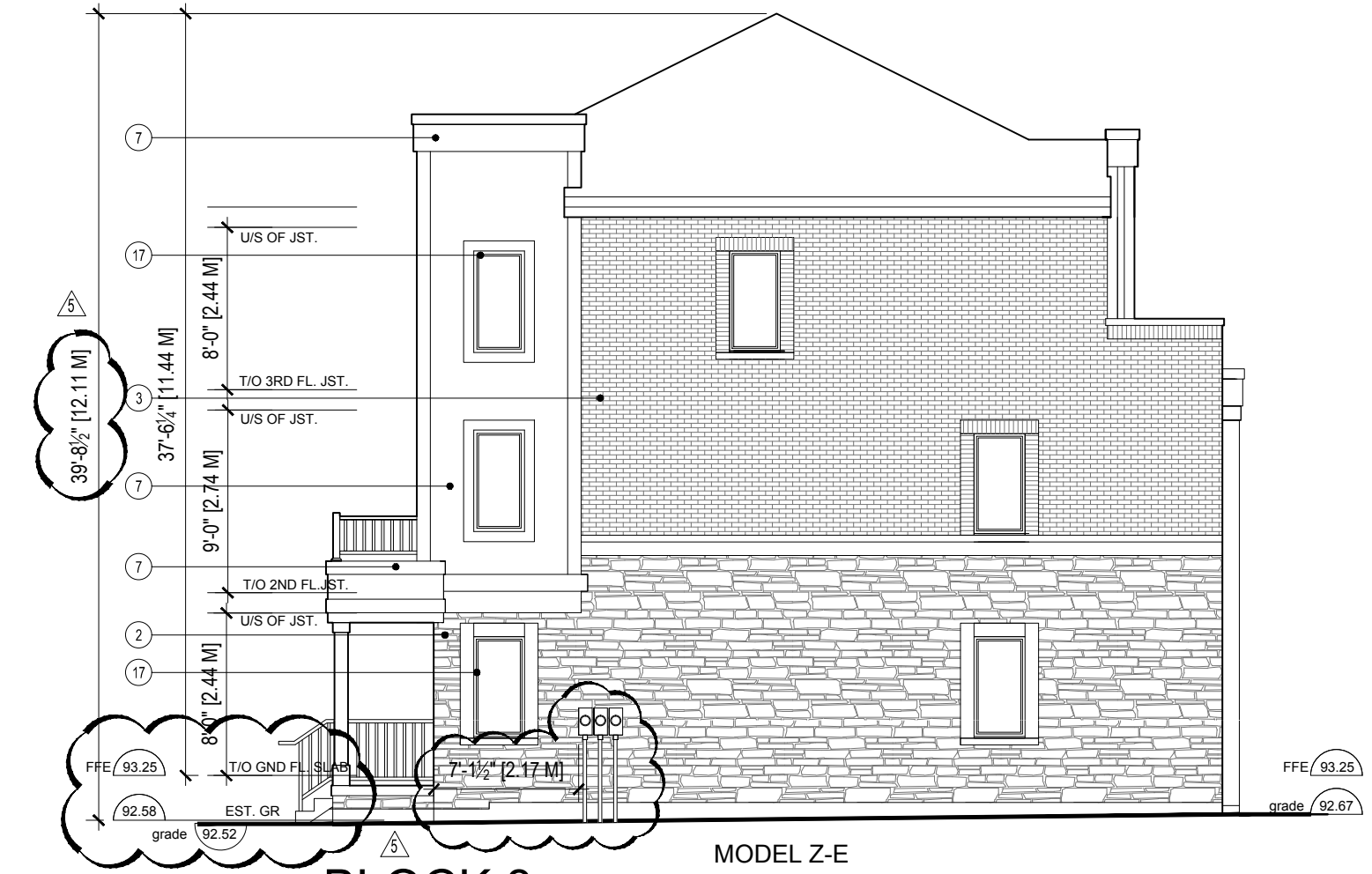
BLOCK 8
WEST ELEVATION



BLOCK 8
NORTH ELEVATION



BLOCK 8
EAST ELEVATION

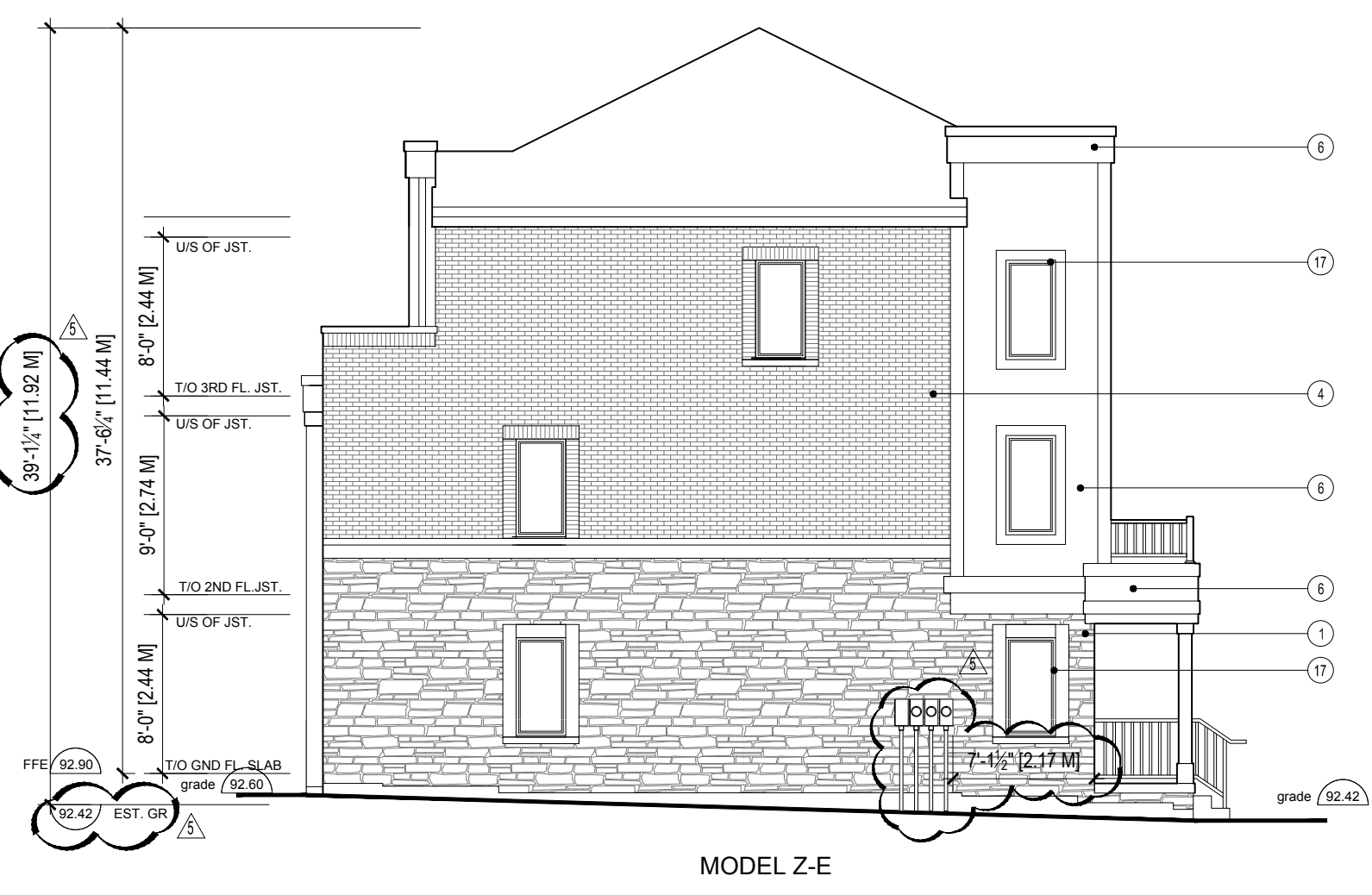


BLOCK 8
SOUTH ELEVATION

All drawings are the property of the Architect and must be returned upon request.
 Contractor shall check all dimensions and report any discrepancies to the Architect before proceeding with the work.
 The contractor and/or engineer shall verify u/s footing elevations and soil bearing capacity prior to excavation and the commencement of work.
DO NOT SCALE DRAWINGS



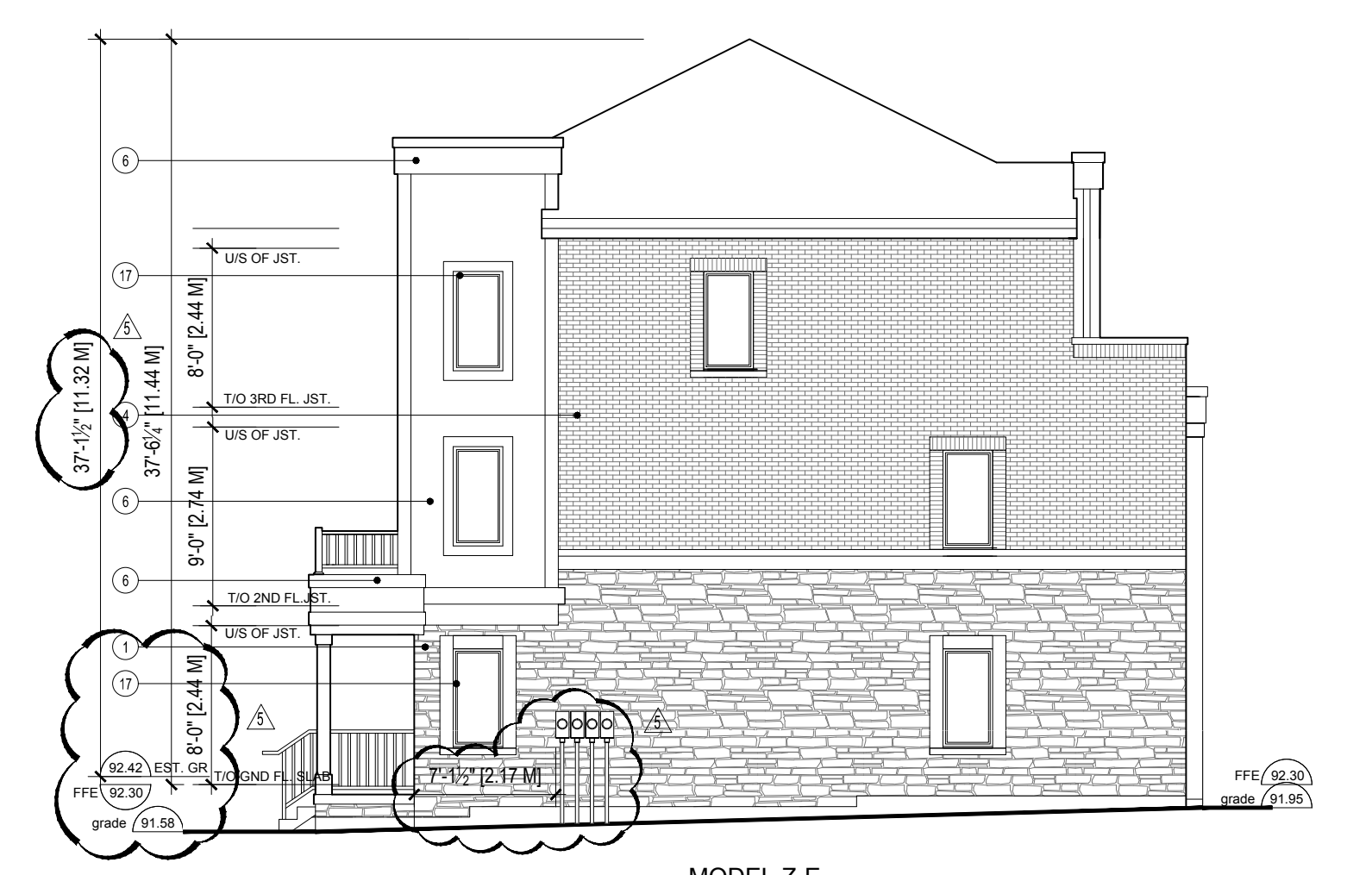
BLOCK 9
WEST ELEVATION



BLOCK 9
NORTH ELEVATION



BLOCK 9
EAST ELEVATION



BLOCK 9
SOUTH ELEVATION

EXTERIOR MATERIALS LEGEND

- 1 MASONRY - STONE VENEER - 1
COLOUR: MONTAR
MORTAR:
- 2 MASONRY - STONE VENEER - 2
COLOUR: MONTAR
MORTAR:
- 3 MASONRY - BRICK VENEER - 1
COLOUR: MONTAR
MORTAR:
- 4 MASONRY - BRICK VENEER - 2
COLOUR: MONTAR
MORTAR:
- 5 MASONRY - BRICK VENEER - 3
COLOUR: MONTAR
MORTAR:
- 6 FIBRE-CEMENT PANEL - 1
COLOUR: MONTAR
MANUFACTURER:
- 7 FIBRE-CEMENT PANEL - 2
COLOUR: MONTAR
MANUFACTURER:
- 8 VINYL SIDING - 1
COLOUR: MONTAR
MANUFACTURER:
- 9 VINYL SIDING - 2
COLOUR: MONTAR
MANUFACTURER:
- 10 VINYL SIDING - 3
COLOUR: MONTAR
MANUFACTURER:
- 11 PRECAST CONCRETE (FLUSH)
COLOUR: MONTAR
MORTAR:
- 12 PRECAST SELF-BANDING (2-PROJECTION)
COLOUR: MONTAR
MORTAR:
- 13 PRECAST CONCRETE CAP
COLOUR: MONTAR
MORTAR:
- 14 PREFINISHED ALUMINIUM RAILING
COLOUR: MONTAR
MANUFACTURER:
- 15 PREFINISHED ALUMINIUM RAILING
COLOUR: MONTAR
MANUFACTURER:
- 16 EXTERIOR WINDOW/DOOR FRAMES - 1
COLOUR: MONTAR
MANUFACTURER:
- 17 EXTERIOR WINDOW/DOOR FRAMES - 2
COLOUR: MONTAR
MANUFACTURER:
- 18 EXTERIOR HOLLOW METAL DOOR - 1
COLOUR: MONTAR
MANUFACTURER:
- 19 EXTERIOR HOLLOW METAL DOOR - 2
COLOUR: MONTAR
MANUFACTURER:

| | | | |
|-----|--------------|-------------------------------------|--|
| 1 | | | |
| 2 | | | |
| 3 | | | |
| 4 | MAY 16, 2016 | RE-ISSUED FOR SITE PLAN APPLICATION | |
| 5 | AUG 4, 2017 | RE-ISSUED FOR SITE PLAN APPLICATION | |
| no. | date | revision | |



GUTHRIE MUSCOVITCH
ARCHITECTS

Tel: (416) 252-5679 Fax: (416) 252-9637
770 Brown's Line, Toronto, Ontario M5W 3W2

owner
MINTO
500-90 SHEPPARD AVE. E
TORONTO, ONTARIO

project
3526 LAKESHORE BLVD
TORONTO, ONTARIO

drawing
BLOCK 9
BLOCK ELEVATIONS

scale 1:100
date DEC 2016
drawn BB, CR
chk'd GMA
project number 14.951

BE-9

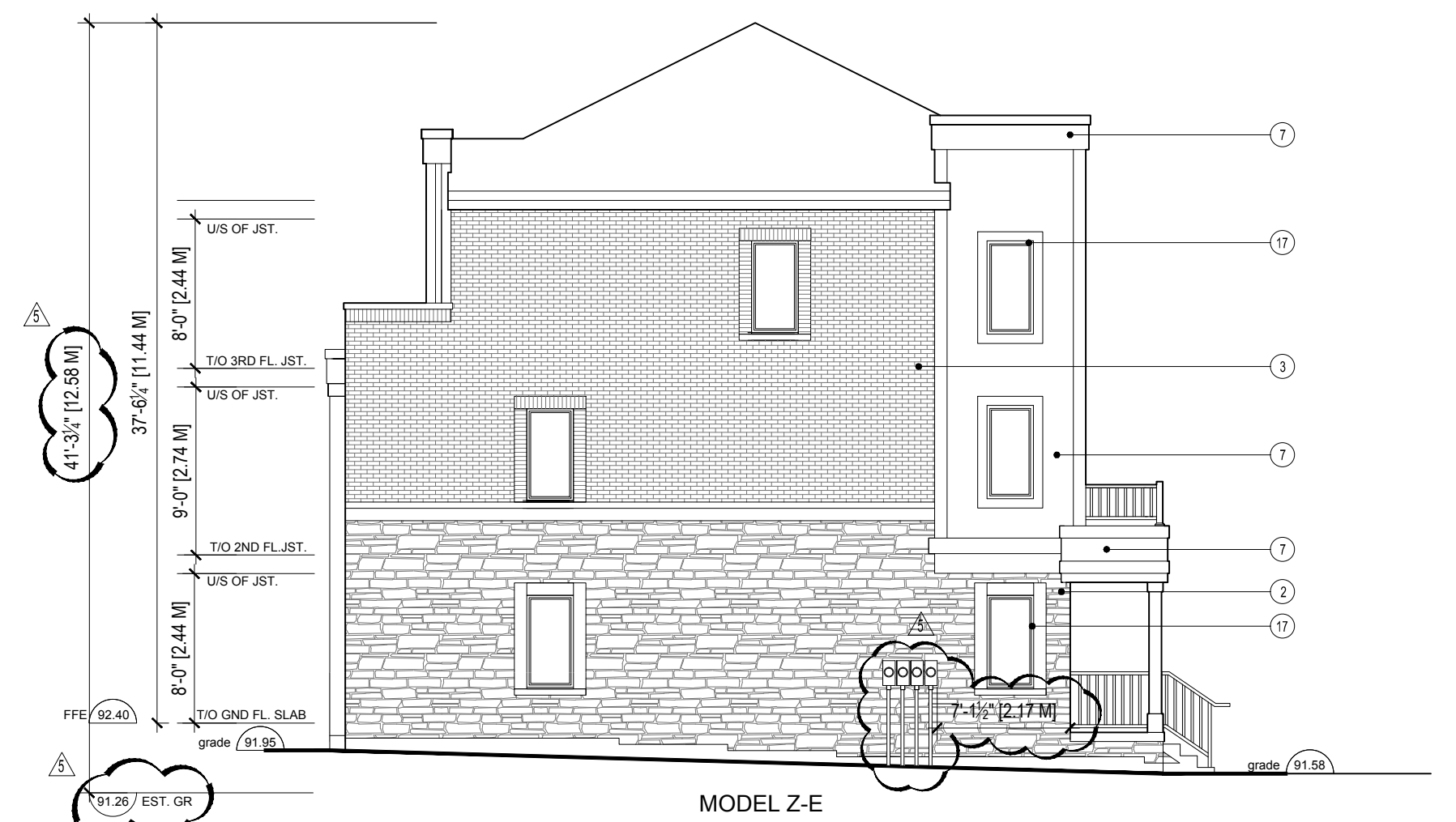
All drawings are the property of the Architect and must be returned upon request.
 Contractor shall check all dimensions and report any discrepancies to the Architect before proceeding with the work.
 The contractor and/or engineer shall verify its footing elevations and soil bearing capacity prior to excavation and the commencement of work.
DO NOT SCALE DRAWINGS



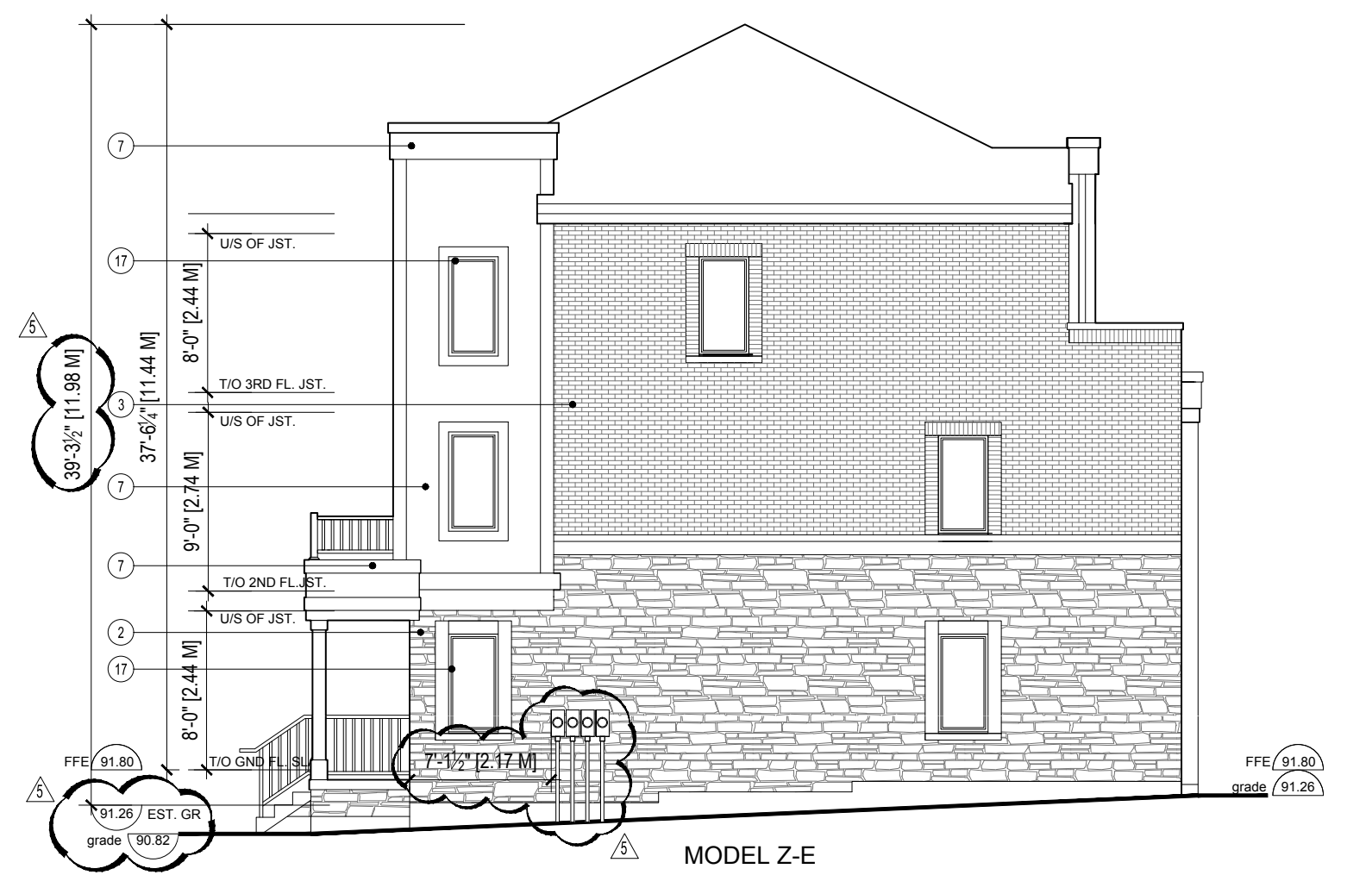
BLOCK 10
WEST ELEVATION



BLOCK 10
EAST ELEVATION



BLOCK 10
NORTH ELEVATION



BLOCK 10
SOUTH ELEVATION

EXTERIOR MATERIALS LEGEND

- 1 MASONRY - STONE VENEER-1
 COLOUR: MANUFACTURER: MORTAR:
- 2 MASONRY - STONE VENEER-2
 COLOUR: MANUFACTURER: MORTAR:
- 3 MASONRY - BRICK VENEER-1
 COLOUR: MANUFACTURER: MORTAR:
- 4 MASONRY - BRICK VENEER-2
 COLOUR: MANUFACTURER: MORTAR:
- 5 MASONRY - BRICK VENEER-3
 COLOUR: MANUFACTURER: MORTAR:
- 6 FIBRE-CEMENT PANEL-1
 COLOUR: MANUFACTURER:
- 7 FIBRE-CEMENT PANEL-2
 COLOUR: MANUFACTURER:
- 8 VINYL SIDING-1
 COLOUR: MANUFACTURER:
- 9 VINYL SIDING-2
 COLOUR: MANUFACTURER:
- 10 VINYL SIDING-3
 COLOUR: MANUFACTURER:
- 11 PRECAST CONCRETE (FLUSH)
 COLOUR: MANUFACTURER: MORTAR:
- 12 PRECAST SILL-BANDING (2PROJECTION)
 COLOUR: MANUFACTURER: MORTAR:
- 13 PRECAST CONCRETE CAP
 COLOUR: MANUFACTURER: MORTAR:
- 14 PREFINISHED ALUMINUM RAILING
 COLOUR: MANUFACTURER:
- 15 PREFINISHED ALUMINUM RAILING
 COLOUR: MANUFACTURER:
- 16 EXTERIOR WINDOW/DOOR FRAMES-1
 COLOUR: MANUFACTURER:
- 17 EXTERIOR WINDOW/DOOR FRAMES-2
 COLOUR: MANUFACTURER:
- 18 EXTERIOR HOLLOW METAL DOOR-1
 COLOUR: MANUFACTURER:
- 19 EXTERIOR HOLLOW METAL DOOR-2
 COLOUR: MANUFACTURER:

| | | |
|-----|--------------|-------------------------------------|
| no. | date | revision |
| | MAY 16, 2016 | RE-ISSUED FOR SITE PLAN APPLICATION |
| 4 | AUG 4, 2017 | RE-ISSUED FOR SITE PLAN APPLICATION |



GUTHRIE MUSCOVITCH
 ARCHITECTS

Tel: (416) 252-5679 Fax: (416) 252-9637
 770 Brown's Line, Toronto, Ontario M5W 3W2

owner
MINTO
 500-90 SHEPPARD AVE. E
 TORONTO, ONTARIO

project
 3526 LAKESHORE BLVD
 TORONTO, ONTARIO

drawing
BLOCK 10
BLOCK ELEVATIONS

scale 1:100
 date DEC 2016
 drawn BB, CR
 ch'd GMA
 project number 14.951

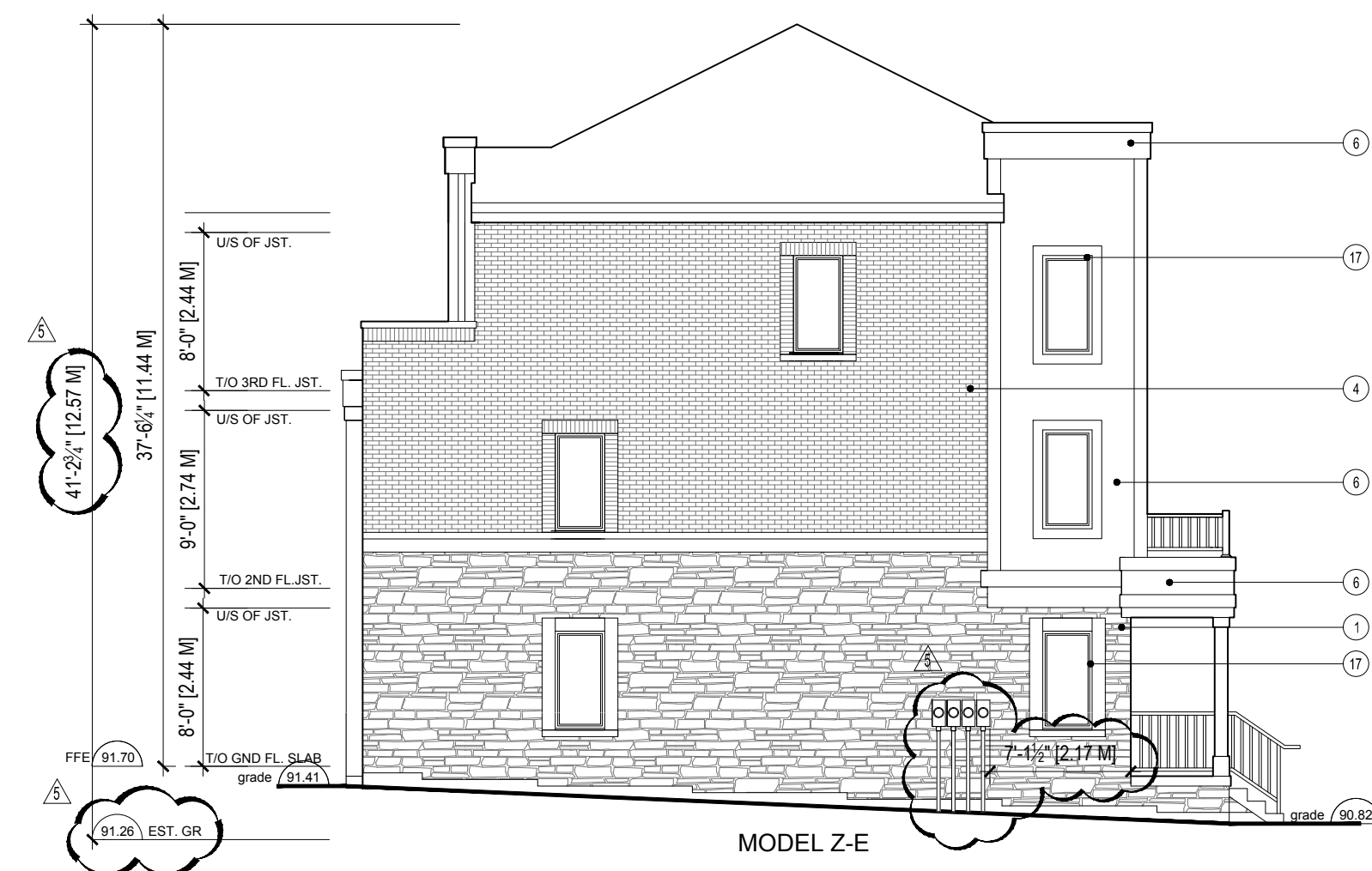
BE-10



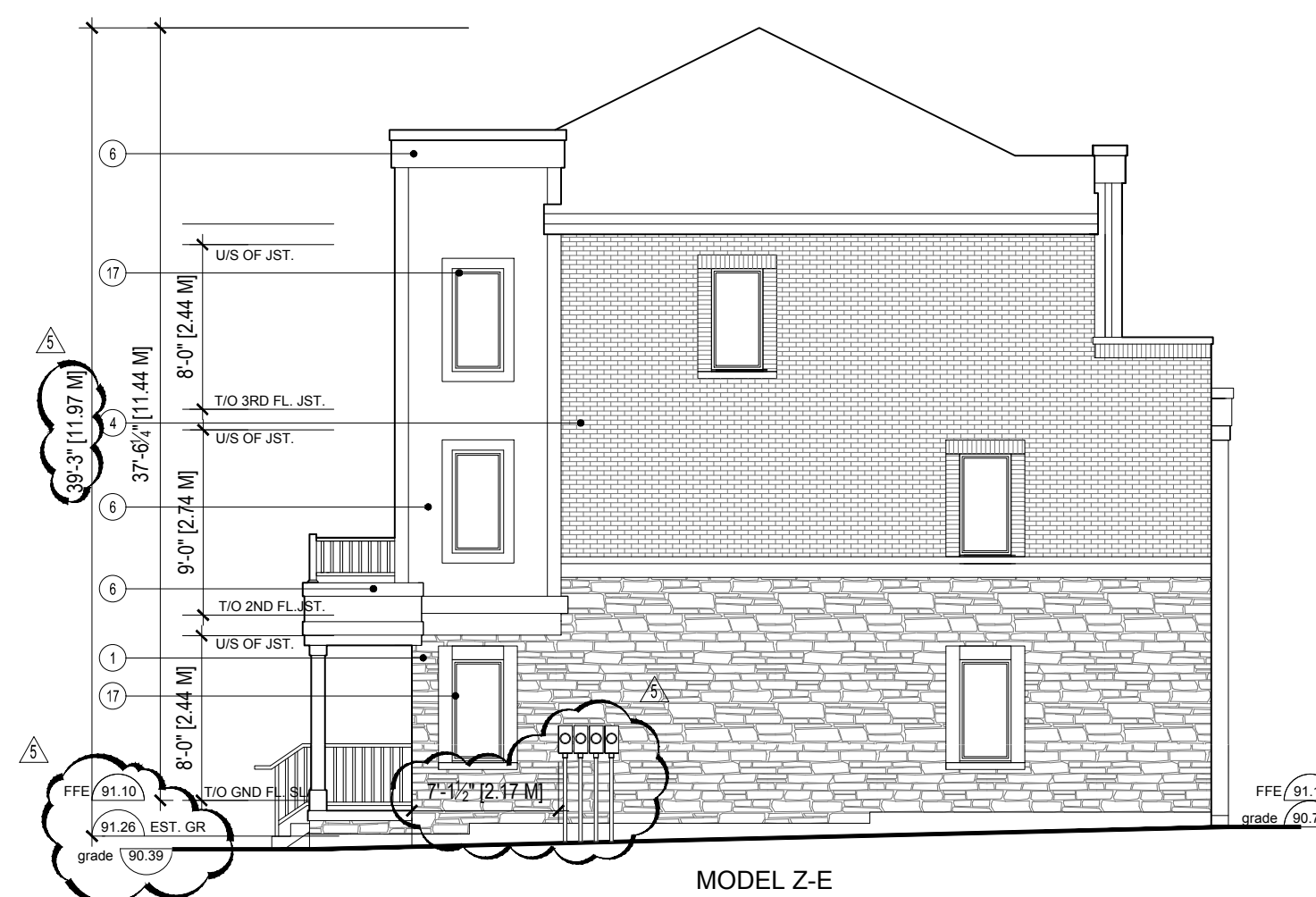
BLOCK 11
WEST ELEVATION



BLOCK 11
EAST ELEVATION



BLOCK 11
NORTH ELEVATION



BLOCK 11
SOUTH ELEVATION

All drawings are the property of the Architect and must be returned upon request.
Contractor shall check all dimensions and report any discrepancies to the Architect before proceeding with the work.
The contractor and/or engineer shall verify all footing elevations and soil bearing capacity prior to excavation and the commencement of work.

DO NOT SCALE DRAWINGS

EXTERIOR MATERIALS LEGEND

- ① MASONRY - STONE VENEER-1
COLOUR:
MANUFACTURER:
MORTAR:
- ② MASONRY - STONE VENEER-2
COLOUR:
MANUFACTURER:
MORTAR:
- ③ MASONRY - BRICK VENEER-1
COLOUR:
MANUFACTURER:
MORTAR:
- ④ MASONRY - BRICK VENEER-2
COLOUR:
MANUFACTURER:
MORTAR:
- ⑤ MASONRY - BRICK VENEER-3
COLOUR:
MANUFACTURER:
MORTAR:
- ⑥ FIBRE-CEMENT PANEL-1
COLOUR:
MANUFACTURER:
- ⑦ FIBRE-CEMENT PANEL-2
COLOUR:
MANUFACTURER:
- ⑧ VINYL SIDING-1
COLOUR:
MANUFACTURER:
- ⑨ VINYL SIDING-2
COLOUR:
MANUFACTURER:
- ⑩ VINYL SIDING-3
COLOUR:
MANUFACTURER:
- ⑪ PRECAST CONCRETE (FLUSH)
COLOUR:
MANUFACTURER:
MORTAR:
- ⑫ PRECAST SILL-BANDING (2 PROJECTIONS)
COLOUR:
MANUFACTURER:
MORTAR:
- ⑬ PRECAST CONCRETE CAP
COLOUR:
MANUFACTURER:
MORTAR:
- ⑭ PREFINISHED ALUMINUM RAILING
COLOUR:
MANUFACTURER:
- ⑮ PREFINISHED ALUMINUM RAILING
COLOUR:
MANUFACTURER:
- ⑯ EXTERIOR WINDOW/DOOR FRAMES-1
COLOUR:
MANUFACTURER:
- ⑰ EXTERIOR WINDOW/DOOR FRAMES-2
COLOUR:
MANUFACTURER:
- ⑱ EXTERIOR HOLLOW METAL DOOR-1
COLOUR:
MANUFACTURER:
- ⑲ EXTERIOR HOLLOW METAL DOOR-2
COLOUR:
MANUFACTURER:

| | | |
|-----|------|----------|
| no. | date | revision |
| | | |
| | | |
| | | |

MAY 16, 2016 RE-ISSUED FOR SITE PLAN APPLICATION
AUG 4, 2017 RE-ISSUED FOR SITE PLAN APPLICATION



GUTHRIE MUSCOVITCH
ARCHITECTS

Tel: (416) 252-5679 Fax: (416) 252-9637
770 Brown's Line, Toronto, Ontario M5W 3W2

owner
MINTO
500-90 SHEPPARD AVE. E
TORONTO, ONTARIO

project
3526 LAKESHORE BLVD
TORONTO, ONTARIO

drawing
BLOCK 11
BLOCK ELEVATIONS

scale 1:100
date DEC 2016
drawn BB, CR
chk'd GMA
project number 14.951

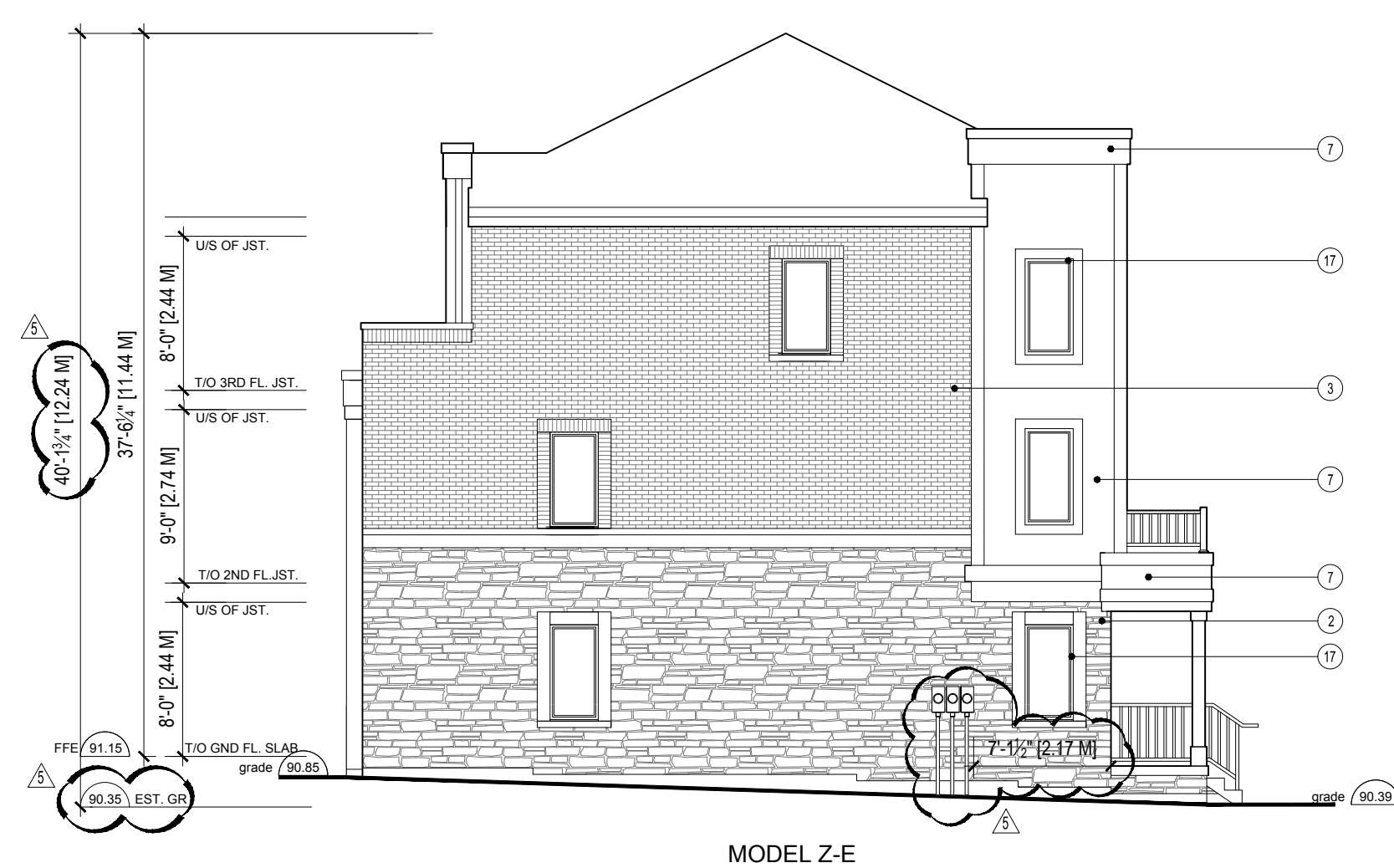
BE-11



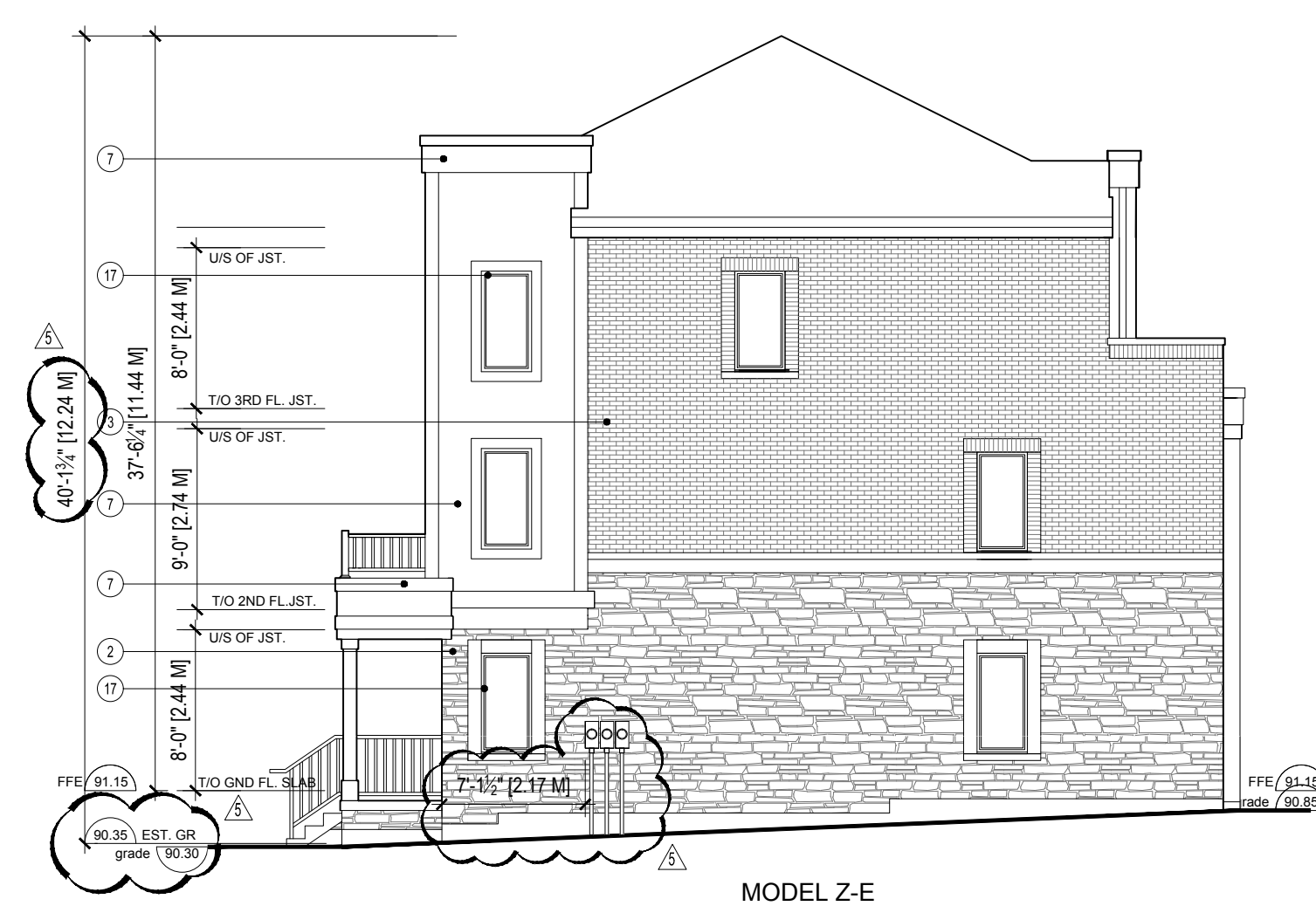
BLOCK 12
WEST ELEVATION



BLOCK 12
EAST ELEVATION



BLOCK 12
NORTH ELEVATION



BLOCK 12
SOUTH ELEVATION

All drawings are the property of the Architect and must be returned upon request.
Contractor shall check all dimensions and report any discrepancies to the Architect before proceeding with the work.
The contractor and/or engineer shall verify all footing elevations and soil bearing capacity prior to excavation and the commencement of work.

DO NOT SCALE DRAWINGS

| EXTERIOR MATERIALS LEGEND | |
|---------------------------|---|
| 1 | MASONRY - STONE VENEER - 1 COLOUR: MORTAR MANUFACTURER: |
| 2 | MASONRY - STONE VENEER - 2 COLOUR: MORTAR MANUFACTURER: |
| 3 | MASONRY - BRICK VENEER - 1 COLOUR: MORTAR MANUFACTURER: |
| 4 | MASONRY - BRICK VENEER - 2 COLOUR: MORTAR MANUFACTURER: |
| 5 | MASONRY - BRICK VENEER - 3 COLOUR: MORTAR MANUFACTURER: |
| 6 | FIBRE-CEMENT PANEL - 1 COLOUR: MORTAR MANUFACTURER: |
| 7 | FIBRE-CEMENT PANEL - 2 COLOUR: MORTAR MANUFACTURER: |
| 8 | VINAL STRIP - 1 COLOUR: MORTAR MANUFACTURER: |
| 9 | VINAL STRIP - 2 COLOUR: MORTAR MANUFACTURER: |
| 10 | VINAL STRIP - 3 COLOUR: MORTAR MANUFACTURER: |
| 11 | PRECAST CONCRETE (FLUSH) COLOUR: MORTAR MANUFACTURER: |
| 12 | PRECAST SELF-BANDING (2" PROJECTION) COLOUR: MORTAR MANUFACTURER: |
| 13 | PRECAST CONCRETE CAP COLOUR: MORTAR MANUFACTURER: |
| 14 | PRE-FINISHED ALUMINUM RAILING COLOUR: MORTAR MANUFACTURER: |
| 15 | PRE-FINISHED ALUMINUM RAILING COLOUR: MORTAR MANUFACTURER: |
| 16 | EXTERIOR WINDOW/DOOR FRAMES - 1 COLOUR: MORTAR MANUFACTURER: |
| 17 | EXTERIOR WINDOW/DOOR FRAMES - 2 COLOUR: MORTAR MANUFACTURER: |
| 18 | EXTERIOR HOLLOW METAL DOOR - 1 COLOUR: MORTAR MANUFACTURER: |
| 19 | EXTERIOR HOLLOW METAL DOOR - 2 COLOUR: MORTAR MANUFACTURER: |

| no. | date | revision |
|-----|--------------|-------------------------------------|
| 1 | MAY 16, 2018 | RE-ISSUED FOR SITE PLAN APPLICATION |
| 4 | AUG 4, 2017 | RE-ISSUED FOR SITE PLAN APPLICATION |



GUTHRIE MUSCOVITCH
ARCHITECTS

Tel: (416) 252-5679 Fax: (416) 252-9637
770 Brown's Line, Toronto, Ontario M5W 3W2

| | |
|---------|--|
| owner | MINTO 500-90 SHEPPARD AVE. E TORONTO, ONTARIO |
| project | 3526 LAKESHORE BLVD TORONTO, ONTARIO |
| drawing | BLOCK 12 BLOCK ELEVATIONS |

| | |
|----------------|----------|
| scale | 1:100 |
| date | DEC 2016 |
| drawn | BB, CR |
| chk'd | GMA |
| project number | 14.951 |

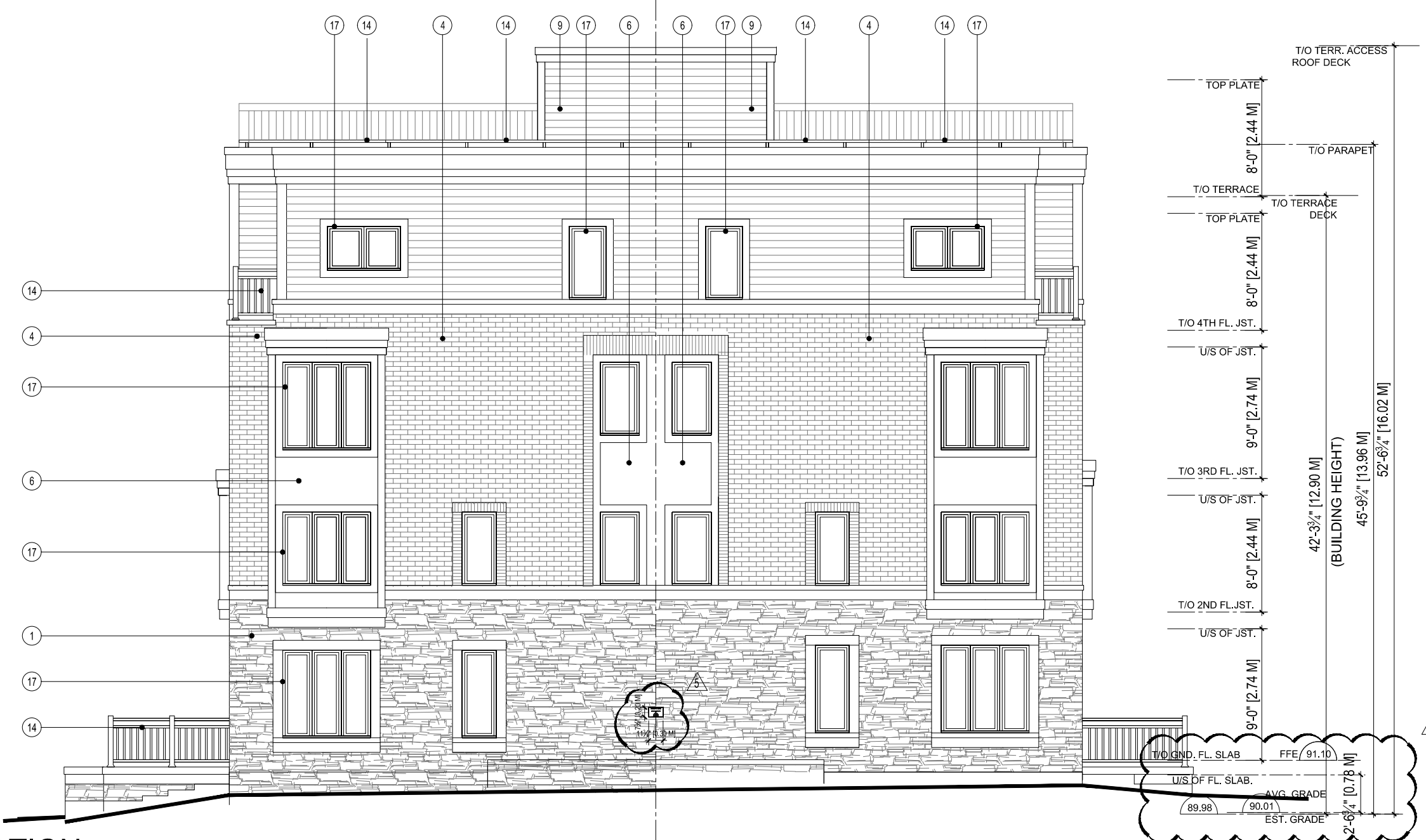
BE-12



**BLOCK 13
EAST ELEVATION**

1:100

MODULE ES1-E2(REV) MDL 2G-E2(REV) - THE TERRACE MDL 2F-E2(REV) - THE FAIRGROUND
 MODULE ES1 MDL 2G - THE TERRACE MDL 2F - THE FAIRGROUND
 MODULE ES1(REV) MDL 2G(REV) - THE TERRACE MDL 2F(REV) - THE FAIRGROUND
 MODULE ES1 MDL 2G - THE TERRACE MDL 2F - THE FAIRGROUND
 MODULE ES1(REV) MDL 2G(REV) - THE TERRACE MDL 2F(REV) - THE FAIRGROUND
 MODULE ES1 MDL 2G - THE TERRACE MDL 2F - THE FAIRGROUND
 MODULE ES1(REV) MDL 2G(REV) - THE TERRACE MDL 2F(REV) - THE FAIRGROUND
 MODULE ES1 MDL 2G - THE TERRACE MDL 2F - THE FAIRGROUND
 MODULE ES1-E (REV) MDL 2G-E (REV) - THE TERRACE MDL 2F-E (REV) - THE FAIRGROUND



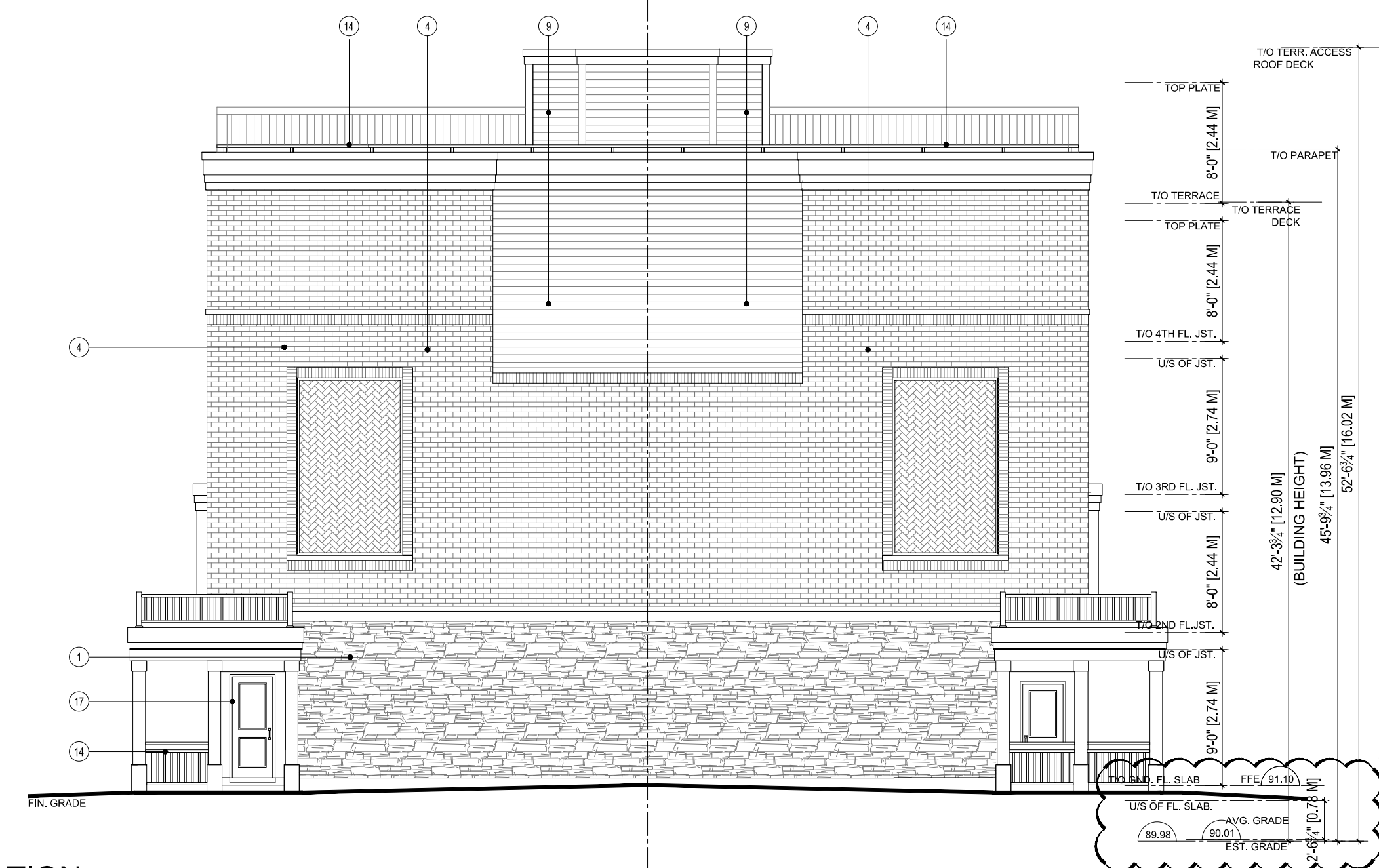
**BLOCK 13
NORTH ELEVATION**

1:100

MODULE ES1-E (REV) MDL 2G-E (REV) - THE TERRACE MDL 2F-E (REV) - THE FAIRGROUND
 MODULE ES1-E MDL 2G - THE TERRACE MDL 2F - THE FAIRGROUND

**BLOCK 13
SOUTH ELEVATION**

1:100



MODULE ES1-E2(A) MDL 2G-E2 - THE TERRACE MDL 2F-E2 - THE FAIRGROUND
 MODULE ES1-E2(REV) MDL 2G-E2(REV) - THE TERRACE MDL 2F-E2(REV) - THE FAIRGROUND



**BLOCK 13
WEST ELEVATION**

1:100

MODULE ES1-E MDL 2G-E - THE TERRACE MDL 2F-E - THE FAIRGROUND
 MODULE ES1(REV) MDL 2G (REV) - THE TERRACE MDL 2F (REV) - THE FAIRGROUND
 MODULE ES1 MDL 2G - THE TERRACE MDL 2F - THE FAIRGROUND
 MODULE ES1(REV) MDL 2G (REV) - THE TERRACE MDL 2F (REV) - THE FAIRGROUND
 MODULE ES1 MDL 2G - THE TERRACE MDL 2F - THE FAIRGROUND
 MODULE ES1(REV) MDL 2G (REV) - THE TERRACE MDL 2F (REV) - THE FAIRGROUND
 MODULE ES1 MDL 2G - THE TERRACE MDL 2F - THE FAIRGROUND
 MODULE ES1(REV) MDL 2G (REV) - THE TERRACE MDL 2F (REV) - THE FAIRGROUND
 MODULE ES1 MDL 2G - THE TERRACE MDL 2F - THE FAIRGROUND
 MODULE ES1-E2 MDL 2G-E2 - THE TERRACE MDL 2F-E2 - THE FAIRGROUND

- All drawings are the property of the Architect and must be returned upon request.
- Contractor shall check all dimensions and report any discrepancies to the Architect before proceeding with the work.
- The contractor and/or engineer shall verify its footing elevations and soil bearing capacity prior to excavation and the commencement of work.
- DO NOT SCALE DRAWINGS**

| EXTERIOR MATERIALS LEGEND | |
|---------------------------|--|
| 1 | MASONRY - STONE VENEER-1 COLOUR: MANUFACTURER: MORTAR: |
| 2 | MASONRY - STONE VENEER-2 COLOUR: MANUFACTURER: MORTAR: |
| 3 | MASONRY - BRICK VENEER-1 COLOUR: MANUFACTURER: MORTAR: |
| 4 | MASONRY - BRICK VENEER-2 COLOUR: MANUFACTURER: MORTAR: |
| 5 | MASONRY - BRICK VENEER-3 COLOUR: MANUFACTURER: MORTAR: |
| 6 | FIBRE-CEMENT PANEL-1 COLOUR: MANUFACTURER: |
| 7 | FIBRE-CEMENT PANEL-2 COLOUR: MANUFACTURER: |
| 8 | VINYL SIDING-1 COLOUR: MANUFACTURER: |
| 9 | VINYL SIDING-2 COLOUR: MANUFACTURER: |
| 10 | VINYL SIDING-3 COLOUR: MANUFACTURER: |
| 11 | PRECAST CONCRETE (FLUSH) COLOUR: MANUFACTURER: MORTAR: |
| 12 | PRECAST SLAB/BANDING (PROJECTION) COLOUR: MANUFACTURER: MORTAR: |
| 13 | PRECAST CONCRETE CAP COLOUR: MANUFACTURER: MORTAR: |
| 14 | PRE-FINISHED ALUMINUM RAILING COLOUR: MANUFACTURER: |
| 15 | PRE-FINISHED ALUMINUM RAILING COLOUR: MANUFACTURER: |
| 16 | EXTERIOR WINDOW/DOOR FRAMES-1 COLOUR: MANUFACTURER: |
| 17 | EXTERIOR WINDOW/DOOR FRAMES-2 COLOUR: MANUFACTURER: |
| 18 | EXTERIOR HOLLOW METAL DOOR-1 COLOUR: MANUFACTURER: |
| 19 | EXTERIOR HOLLOW METAL DOOR-2 COLOUR: MANUFACTURER: |

no. date revision

MAY 16, 2018 RE-ISSUED FOR SITE PLAN APPLICATION

41 AUG 6, 2018 RE-ISSUED FOR SITE PLAN APPLICATION

no. date revision

ONTARIO ASSOCIATION OF ARCHITECTS
Arthur & Muscovitch
 ARTHUR & MUSCOVITCH
 LICENCE 2733

GUTHRIE MUSCOVITCH
 ARCHITECTS

Tel: (416) 252-5679 Fax: (416) 252-9637
 770 Brown's Line, Toronto, Ontario M8W 3W2

owner

MINTO

project

3526 LAKE SHORE BLVD.
 TORONTO, ONTARIO

drawing

**BLOCK ELEVATIONS
 BLOCK 13**

scale 1/8" = 1'0"

date DEC 2016

drawn CR

chk'd BB

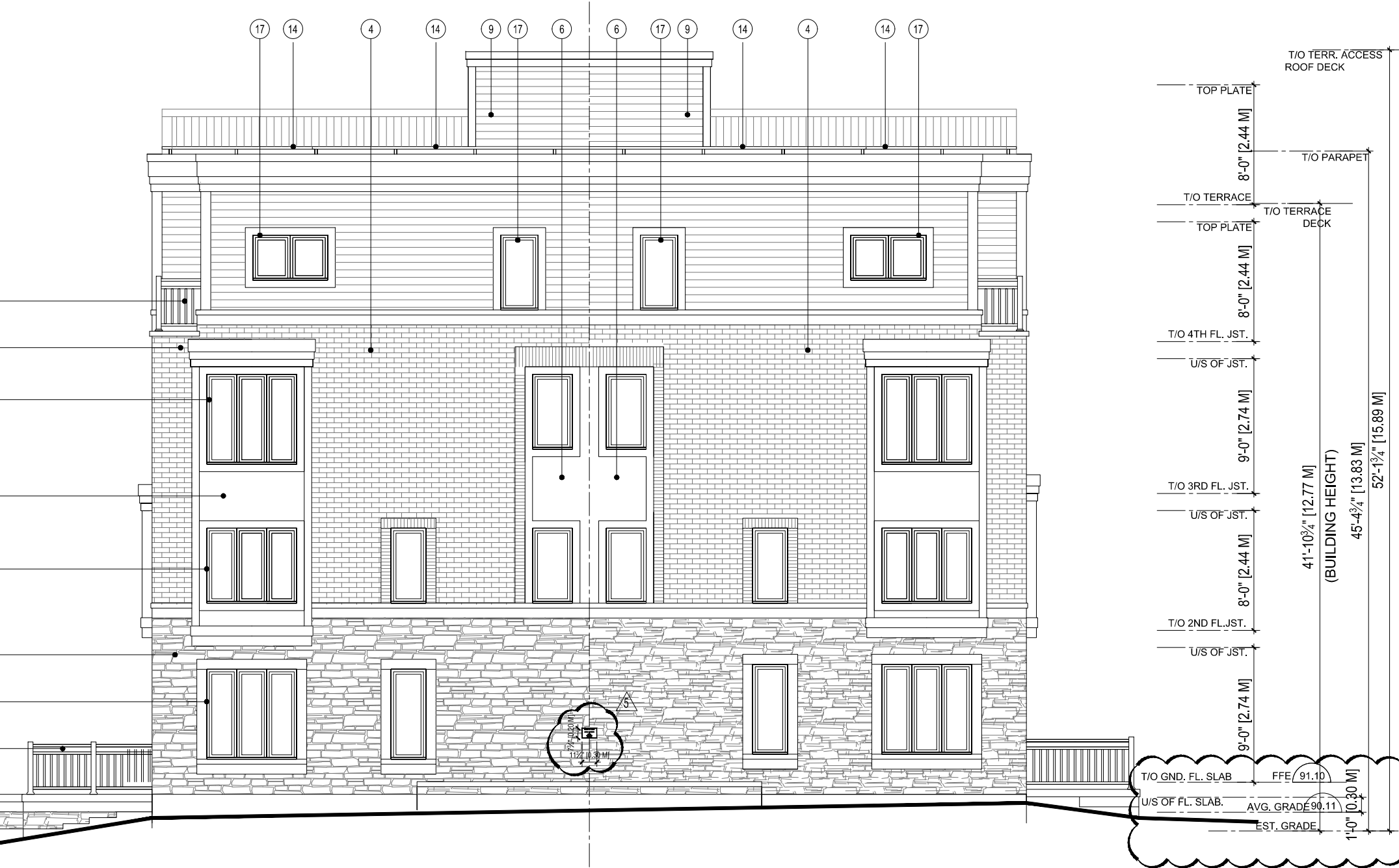
project number 14951

BE-13



**BLOCK 14
EAST ELEVATION**

1:100

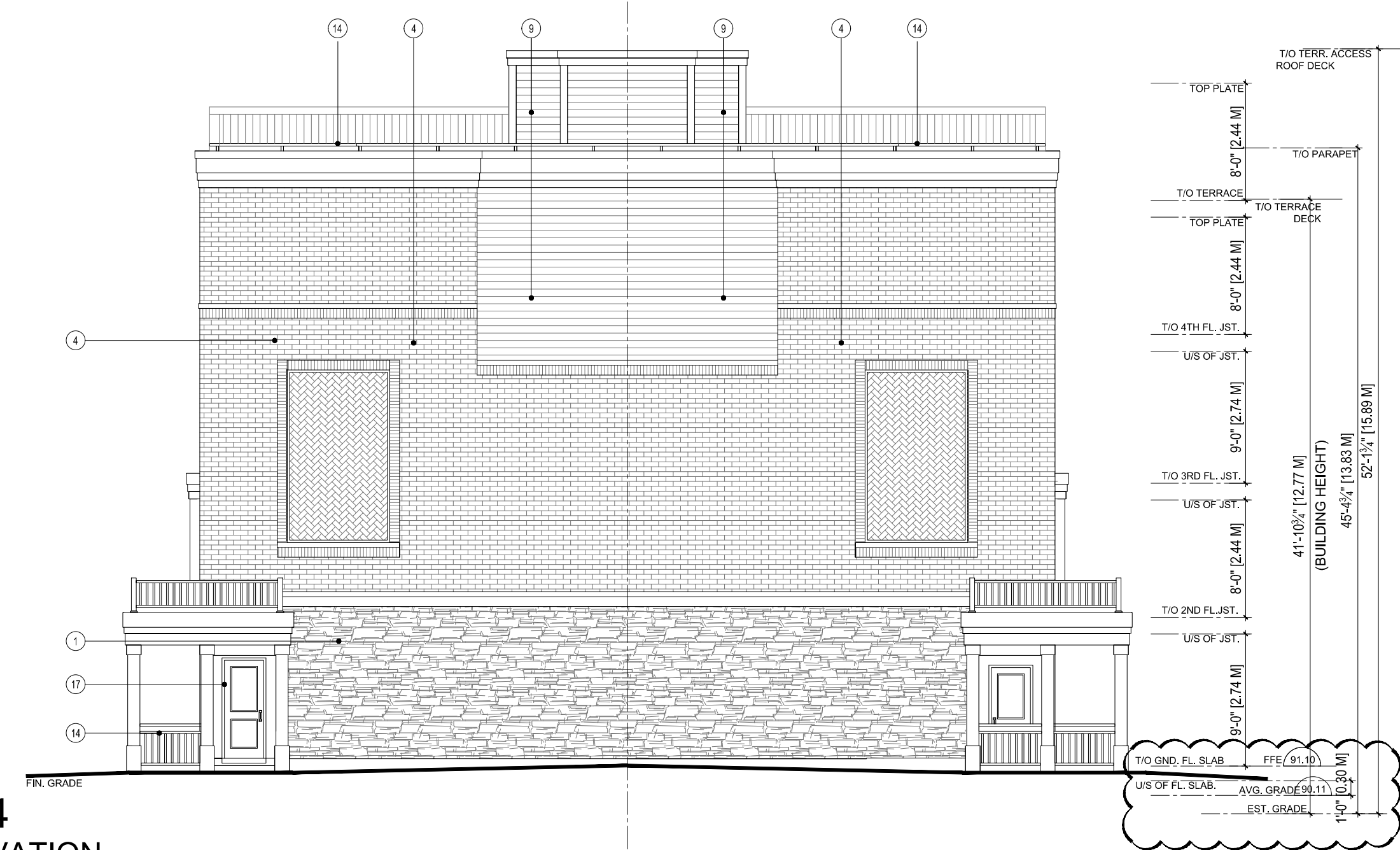


**BLOCK 14
NORTH ELEVATION**

1:100

**BLOCK 14
SOUTH ELEVATION**

1:100



**BLOCK 14
WEST ELEVATION**

1:100

All drawings are the property of the Architect and must be returned upon request.
Contractor shall check all dimensions and report any discrepancies to the Architect before proceeding with the work.
The contractor and/or engineer shall verify all footing elevations and soil bearing capacity prior to excavation and the commencement of work.
DO NOT SCALE DRAWINGS

| EXTERIOR MATERIALS LEGEND | |
|---------------------------|---|
| 1 | MASONRY - STONE VENEER-1 COLOUR: MANUFACTURER: MORTAR: |
| 2 | MASONRY - STONE VENEER-2 COLOUR: MANUFACTURER: MORTAR: |
| 3 | MASONRY - BRICK VENEER-1 COLOUR: MANUFACTURER: MORTAR: |
| 4 | MASONRY - BRICK VENEER-2 COLOUR: MANUFACTURER: MORTAR: |
| 5 | MASONRY - BRICK VENEER-3 COLOUR: MANUFACTURER: MORTAR: |
| 6 | FIBRE-CEMENT PANEL-1 COLOUR: MANUFACTURER: |
| 7 | FIBRE-CEMENT PANEL-2 COLOUR: MANUFACTURER: |
| 8 | VINYL SIDING-1 COLOUR: MANUFACTURER: |
| 9 | VINYL SIDING-2 COLOUR: MANUFACTURER: |
| 10 | VINYL SIDING-3 COLOUR: MANUFACTURER: |
| 11 | PRECAST CONCRETE (FLUSH) COLOUR: MANUFACTURER: MORTAR: |
| 12 | PRECAST SILLBANDING (PROJECTION) COLOUR: MANUFACTURER: MORTAR: |
| 13 | PRECAST CONCRETE CAP COLOUR: MANUFACTURER: MORTAR: |
| 14 | PREFINISHED ALUMINUM RAILING COLOUR: MANUFACTURER: |
| 15 | PREFINISHED ALUMINUM RAILING COLOUR: MANUFACTURER: |
| 16 | EXTERIOR WINDOW/DOOR FRAMES-1 COLOUR: MANUFACTURER: |
| 17 | EXTERIOR WINDOW/DOOR FRAMES-2 COLOUR: MANUFACTURER: |
| 18 | EXTERIOR HOLLOW METAL DOOR-1 COLOUR: MANUFACTURER: |
| 19 | EXTERIOR HOLLOW METAL DOOR-2 COLOUR: MANUFACTURER: |

| | | |
|-----|--------------|-------------------------------------|
| no. | date | revision |
| 1 | MAY 16, 2018 | RE-ISSUED FOR SITE PLAN APPLICATION |
| 4 | AUG 29, 2018 | RE-ISSUED FOR SITE PLAN APPLICATION |

ONTARIO ASSOCIATION OF ARCHITECTS
A. Guthrie & Muscovitch
ARTHUR S. MUSCOVITCH
LICENCE 2733

GUTHRIE MUSCOVITCH
ARCHITECTS

Tel: (416) 252-5679 Fax: (416) 252-9637
770 Brown's Line, Toronto, Ontario M8W 3W2

| | |
|----------------|---|
| owner | MINTO |
| project | 3526 LAKE SHORE BLVD. TORONTO, ONTARIO |
| drawing | BLOCK ELEVATIONS BLOCK 14 |
| scale | 1/8" = 1'0" |
| date | DEC 2016 |
| dwn | CR |
| chk'd | BB |
| project number | 14951 |

BE-14